



South West Pony Association



CHAMPIONSHIP SHOW

Incorporating

*RMB Festival, Wales & West Festival,
Show within a Show, Fun Classes
Family Showing Series, Medwin's Challenge
Arena Eventing & Show Jumping.*

Including

*VHS Area & Regional Qualifiers
SSADL LIHS First Round Qualifiers*

THURSDAY, FRIDAY & SATURDAY

31 August – 2 September 2023

To be held at

**THE DAVID BROOME EVENT CENTRE, CRICK,
MONMOUTHSHIRE. NP26 5XP**

CLASSES FOR ALL TYPES OF EQUINES

MANY CLASSES OPEN TO NON MEMBERS

For enquiries: Phone 07774 451156 Email: RichardatSWPA@aol.com Website: www.swpa.co.uk

ALL REGISTRATIONS, QUALIFICATIONS & ENTRIES CAN NOW BE PROCESSED
ONLINE AT www.showingscene.com

CLOSING DATE FOR ONLINE PRE-ENTRIES MIDNIGHT ON 25 AUGUST 2023

Entries after this date at extra cost

SHOW ENTRY FEES

ALL CHAMPIONSHIP CLASSES:

Classes 1 – 134 £17.00 per class

ENTRIES AT THE SHOW £22.00 PER CLASS + REGISTRATION FEE

RMB FESTIVAL, WALES & WEST FESTIVAL, VHS AREA QUALIFIER, CLASSES:

Classes 201 – 333, 431 – 545, VHS1 – VHS6

SWPA Registered Exhibitors £14.00 per class

Non-SWPA Registered Exhibitors £17.00 per class

VHS REGIONAL QUALIFIER CLASSES, SSADL QUALIFIER CLASSES:

Classes VHS7– VHS12, SSADL1 – SSADL6

SWPA Registered Exhibitors £15.00 per class

Non-SWPA Registered Exhibitors £18.00 per class

SHOW WITHIN A SHOW, FAMILY SHOWING / BROAD FAMILY CHALLENGE CLASSES:

Classes 600 – 639, 351 – 390, 550 – 558

SWPA Registered Exhibitors £13.00 per class

Non-SWPA Registered Exhibitors £16.00 per class

DRESSAGE CLASSES:

Classes 560 – 566

SWPA Registered Exhibitors £16.50 per class

Non-SWPA Registered Exhibitors £20.50 per class

FRIDAY & SATURDAY FUN CLASSES:

Classes 535 – 541, 650 – 656

SWPA Registered Exhibitors £9.50 per class

Non-SWPA Registered Exhibitors £12.50 per class

SHOW JUMPING & ARENA EVENTING CLASSES:

Classes SJ1 – SJ10 & AE1 – AE10

SWPA Registered Exhibitors £15.00 per class

Non-SWPA Registered Exhibitors £18.00 per class

WORKING HUNTER MASTER CLASS:

Class MC1

SWPA Registered Exhibitors £10.00 per class

Non-SWPA Registered Exhibitors £14.00 per class

EVENING PERFORMANCE CLASSES :

Class EP1 All Exhibitors £8.00 per class (£10.00 After 25 August)

Classes EP2 – EP9 & EP11 All Exhibitors £10.00 per class (£12.00 After 25 August)

ALL ENTRIES CAN BE MADE ON-LINE AT www.showingscene.com

**ALL ENTRIES MADE AFTER MIDNIGHT ON 25 AUGUST 2023 AND ON THE DAY
£5 EXTRA PER CLASS (Except EP1-EP11)**

Copyright JCS Enterprises. Schedule compiled and designed by Richard Broad. 07774 451156

STABLING

Stabling has been arranged for the championships, and can be booked through the
SWPA ONLY via www.showingscene.com

NO Stables can be booked through The David Broome Event Centre.

Stables will be available from 1.00pm on Wednesday 30 August

All stables must be vacated by 10.00am Sunday 3 September.

Stable Cost for the duration only Members £83.00 Non Members £98.00

Please Note: It is **NOT** possible to hire stables for single days

South West Pony Association

FOUNDER MEMBER & CHAIRMAN: Mr Richard Broad.

SECRETARY & CHAMPIONSHIP SHOW SECRETARY: Miss Charise Broad

Richard and Family wish to thank all those who have given up their time to help with the organising and running of this show

We would also like to thank all our sponsors for their generosity, without whom we couldn't run this show, a special thanks to Jacqui Falconer, Mo Rogers, Karen Manuel, for all their help.

CHIEF STEWARD: Richard Broad

STEWARDS: *A special thank you to all the Stewards that give freely of their time, without whom the show could not be run.*

EVENING PERFORMANCE ANNOUNCERS: Mrs Carey Knox & Miss Corrin Knox.

Championship Schedule

INTRODUCTION TO THE SCHEDULE

Please take care to read the schedule carefully and the rules ascertaining to many of the classes. Many of the following classes will be split into either, heights, ages or breeds as entries warrant.

NONE of the classes listed will be amalgamated.

May I remind all exhibitors that it is your responsibility to make sure you are in the correct class and on time. Any announcements given on the Public Address system, WhatsApp Group, or by the Stewards are for guidance only.

Please make sure you have read the Show Rules

Richard Broad (chairman)

Forward

To help guide you through the schedule here are a few tips.

The Timetables should be your reference for class start times and where the classes are being run.

Timetables also have the judges names listed. There is also a complete list of Judges at the beginning of this schedule.

The Schedule has the complete definition of the classes and eligibility to enter.

Classes 1 – 134

Championship Classes:

You MUST have qualified for these classes and be a **2023** Registered SWPA exhibitor.

Classes 201 - 315

RMB Festival Classes:

These classes will be held on Thursday and are open to SWPA members and Non-members.

Classes 351 – 390

SWPA Family Showing Series:

These classes will be held on Friday and are open to SWPA members and Non-members.

These classes are for those competitors who genuinely do the work themselves and produce from home.

Classes 431 – 532

SWPA Wales & West Festival Classes:

These classes will be held on Friday and are open to SWPA members and Non-members.

Classes 550 – 558

Medwin's Challenge Classes:

These classes will be held on Friday, and are open to SWPA members and Non-members.

Classes 560 – 566

SWPA Dressage Competition:

These classes will be held on Thursday & Friday and are open to SWPA members and Non-members.

Classes 600 – 639

SWPA 'Show within a Show Classes:

These classes will be held on Saturday, and are open to SWPA members and Non-members.

Classes SJ1 – SJ10

SWPA Show Jumping

Classes AE1 – AE10

SWPA Arena Eventing

Classes VHS1 – VHS6

Veteran Horse Society Area Qualifier Classes:

Classes VHS7 – VHS12

Veteran Horse Society Regional Qualifier Classes:

These classes are ONLY open to exhibitors that have qualified from a VHS Area Qualifier.

Classes SSADL1 – SSADL6

Senior Showing Home Produced LIHS Qualifier Classes:

PLEASE NOTE:

CHAMPIONSHIPS IN BLUE TYPE HAVE TROPHIES ASSIGNED TO THEM.

Please make sure these are collected from the Secretary's Office and signed for

The management team hope you all enjoy your weekend

CHAMPIONSHIP CLASSES 1 – 134

PLEASE NOTE: You MUST have qualified for these classes and be a 2023 Registered SWPA exhibitor, however you only need one qualifying card to enter any of these classes that is suitable for your horse/pony, rider/handler.

OPEN IN-HAND CLASSES

CLASSES 1 – 17 ARE KINDLY SPONSORED TEAM PHOENIX

Championship 'B'

Class 1 Riding Horse Hack. Any age. Colt, Filly, Mare or Gelding. Riding Horse to exceed 148cms at maturity. Hack not to exceed 160cms at maturity
(Special Rosette to Best Youngstock)

Championship 'E'

Class 2 Hunter Type. Any age. Colt, Filly, Mare or Gelding. To exceed 148cms at maturity.
(Special Rosette to Best Youngstock)

Championship 'C'

Class 3 Show Cob. Any age. Colt, Filly, Mare or Gelding. . (Special Rosette to Best Youngstock)

Championship 'C'

Class 4 Traditional Cob. Any age. Colt, Stallion, Filly, Mare or Gelding. (Special Rosette to Best Youngstock)

Championship 'X'

Class 5 X Race Horse. Stallion, Mare or Gelding. Four years old and over. The equine MUST have raced either on the flat, over jumps or point-to-point.
To be judged on the suitability to compete in all disciplines.

Championship 'W'

Class 6 World Breeds. To include Moorland & Hill Bred. Any age. Colt, Stallion, Filly, Mare or Gelding. (Special Rosette to Best Youngstock)
(Excluding British Native Breeds, M&M Part Breds, Pure, Part Bred & Anglo Arab)

Championship 'S'

Class 7 Driving Type, Horse / Pony. Any age. Colt, Stallion, Filly, Mare or Gelding. (Special Rosette to Best Youngstock)

Championship 'Z'

Class 8 Miniature Horse. Any age. Colt, Stallion, Filly, Mare or Gelding. Registered with their respective Miniature Horse Society.
(Special Rosette to Best Youngstock)

Championship 'D'

Class 9 Coloured Horse / Pony. Youngstock. Colt, Filly, or Gelding. Yearling, Two and Three year old. (Special Rosette to Best Yearling)

Class 10 Coloured Horse / Pony. Four and over. Stallion, Mare, or Gelding.

N.B Coloured includes all colours except Piebald & Skewbald

Class 11 Piebald/Skewbald. Youngstock. Colt, Filly, or Gelding. Yearling, Two and Three year old. (Special Rosette to Best Yearling)

Class 12 Piebald/Skewbald. Four and over. Stallion, Mare, or Gelding.

Championship 'V'.

Classes 13 – 15 are open to Stallion, Mare or Gelding

Class 13 In-Hand Veteran. Fifteen – Nineteen years old.

Class 14 In-Hand Veteran. Twenty – Twenty Four years old.

Class 15 In-Hand Veteran. Twenty Five years old and over.

Championship 'R'

Class 16 Competition Horse/Pony Youngstock. Colt, Filly or Gelding. Yearling, Two and Three year old. (Special Rosette to Best Yearling)

Class 17 Competition Horse/Pony. Four and over. Stallion, Mare or Gelding. .

SASHES IN THIS LIGHT HORSE / PONY CHAMPIONSHIP ARE KINDLY SPONSORED BY TEAM PHOENIX

IN-HAND LIGHT HORSE / PONY CHAMPIONSHIP (ch6):

First & Second placed exhibits from classes 1 – 17 to compete for the

2023 SWPA TEAM PHOENIX In-Hand Light Horse/Pony of the Year Rosedale Salver.

Kindly donated by the ROSEDALE STUD, Mr & Mrs L Partridge.

Sashes for Champion, Reserve Champion & First Reserve

**CHAMPION & RESERVE CHAMPION to go forward to the Supreme In-Hand of Show Championship
to be held during Saturday night Evening Performance.**

Carn Nicholas Show Team Championship

**This competition is open to the Champion & Reserve from the
RMB Festival & Wales & West Festival In-Hand & Ridden Finals**

The Judge for this competition will be announced at the start of the class.

Champion £100 & Sash Reserve Champion £75 & Sash First Reserve £50 & Sash

All exhibits will receive a special finalists rosette.

ARAB & PART BRED IN-HAND CLASSES

ROSETTES IN CLASSES 20 – 27 ARE KINDLY SPONSORED BY TEAM PHOENIX

Championship 'F'

Class 20 M&M Part Bred. Youngstock. Colt, Filly or Gelding. Yearling, Two and Three year old. Not to exceed 158cms at maturity.
(Special Rosette to Best Yearling)

Class 21 M&M Part Bred. Four and over. Stallion, Mare or Gelding. Not exceeding 158cms.

Championship 'A'

Class 22 Part Bred & Anglo Arab. Any age Colt, Stallion, Filly, Mare or Gelding. (Special Rosette to Best Youngstock)

Class 23 Pure Bred Arab. Any age. Colt, Stallion, Filly, Mare or Gelding. (Special Rosette to Best Youngstock)

Championship 'G'

Class 24 Riding Pony. Youngstock. Colt, Filly or Gelding. Yearling. Two and Three year old. (Special Rosette to Best Yearling)

Class 25 Riding Pony. Four and over. Stallion, Mare or Gelding.

Championship 'H'

Class 26 Show Hunter Pony. Youngstock. Colt, Filly or Gelding. Yearling. Two and Three year old. (Special Rosette to Best Yearling)

Class 27 Show Hunter Pony. Four and over. Stallion, Mare or Gelding.

SASHES IN THIS ARAB & PART BRED CHAMPIONSHIP ARE KINDLY SPONSORED BY TEAM PHOENIX

IN-HAND ARAB & PART BRED CHAMPIONSHIP (ch10):

**First & Second placed exhibits from classes 20 – 27 to compete for the
2023 SWPA TEAM PHOENIX In-Hand Part Bred of the Year Championship
Sashes for Champion, Reserve Champion & First Reserve**

**CHAMPION & RESERVE CHAMPION to go forward to the Supreme In-Hand of Show Championship
to be held during Saturday night Evening Performance.**

OWNER BRED CLASSES 28 – 31 ARE KINDLY SPONSORED BY RUSSELL MARKS & SIMON POXON-MARKS

OWNER BRED IN-HAND CLASSES

Championship 'O'

ALL EXHIBITS MUST BE BRED, OWNED AND SHOWN BY A MEMBER OF THE FAMILY.

(Mountain & Moorland Ponies MUST be registered with their respective Pure Breed Society Stud Books)

Class 28 Mountain & Moorland. Youngstock. Colt, Filly or Gelding. (Special Rosette to Best Yearling & Best Foal)

Class 29 Mountain & Moorland. Four and over. Stallion Mare or Gelding.

Class 30 Open (excluding M&M). Youngstock. Colt, Filly or Gelding. (Special Rosette to Best Yearling & Best Foal)

Class 31 Open (excluding M&M). Four and over. Stallion, Mare or Gelding.

SASHES IN THIS OWNER BRED CHAMPIONSHIP ARE KINDLY SPONSORED BY RUSSELL MARKS & SIMON POXON-MARKS

OWNER BRED IN-HAND CHAMPIONSHIP (ch11):

**First & Second placed exhibits from classes 28 – 31 to compete for the
2023 SWPA Owner Bred of the Year Trophy. Kindly donated by Saith, Stepley Studs.
Sashes for Champion, Reserve Champion & First Reserve.**

**CHAMPION & RESERVE CHAMPION to go forward to the Supreme In-Hand of Show Championship
to be held during Saturday night Evening Performance.**

OPEN RIDDEN CLASSES

CLASSES 32 – 46 ARE KINDLY SPONSORED BY PHOENIX EQUESTRIAN

Championships 'E1', 'B1', 'C1'.

Class 32 Ridden Light/Middle/Heavyweight Hunter. Mare or Gelding. Four years old and over. Exceeding 148cms
Riders to have attained their 16th birthday by 1st January in the current year.

Class 33 Ridden Riding Horse. Mare or Gelding. Four years old and over.
Exceeding 148cms. Riders to have attained their 15th birthday by 1st January in the current year.

Class 34 Ridden Hack. Mare or Gelding. Four years old and over. Not to exceed 160cms.
Riders to have attained their 15th birthday by 1st January in the current year.

Class 35 Ridden Open Light/Heavyweight Cob. Mare or Gelding. Four years old and over. *This class includes Maxi Cobs*
(Riders to be suitable size for equine ridden)

Championship 'X1'.

Class 36 Ridden X Race Horse. Stallion, Mare or Gelding. Four years old and over. The equine MUST have raced either on the flat, over jumps or
point-to-point. To be judged on the suitability to compete in all disciplines.
Riders to have attained their 15th birthday before 1st January in the current year. (See Rules for Ridden Stallions)

Championship 'W1'.

Class 37 Ridden World Breeds inc. Moorland & Hill Bred. Stallion, Mare or Gelding. Four years old and over. Rider any age.
(See Rules for Ridden Stallions) (Excluding British Native Breeds, M&M Part Breds, Pure, Part Bred & Anglo Arabs)

Championship 'C2'.

Class 38 Ridden Traditional Cob. Stallion, Mare or Gelding. Four years old and over. Riders any age. (See Rules for Ridden Stallions)

Championship 'D1'

PLEASE STATE IF YOU ENTERING CLASSES 32 – 35 AS A LEAD REIN

Class 39 Ridden Coloured Horse/Pony. Stallion, Mare or Gelding. Four years old and over. Rider any age. (See Rules for Ridden Stallions)

N.B Coloured includes all colours except Piebald & Skewbald

Class 40 Ridden Piebald/Skewbald. Stallion, Mare or Gelding. Four years old and over. Rider any age. (See Rules for Ridden Stallions)

Championship 'V1'

Classes 41 – 43 are open to Stallion, Mare or Gelding Rider any age. (See rules for Ridden Stallions)

Class 41 Ridden Veteran. Fifteen – Nineteen years old.

Class 42 Ridden Veteran. Twenty - Twenty Four years old and over.

Class 43 Ridden Veteran. Twenty Five and over.

Championship 'R2'

Method of Judging: -

Phase One: Performance & Freestyle Show 60 marks.

Phase Two: Conformation / Type and Suitability for Dressage 40 marks.

The individual Freestyle Show to include, Halt, Walk on a long rein, Ordinary trot serpentine, Extended trot on the diagonal, Canter serpentine with change of lead, Extended canter on the diagonal. Not to exceed 2 minutes.

Class 44 Ridden Competition Mountain & Moorland. Stallion, Mare or Gelding. Four years old and over. Registered in their respective Pure Breed Society Stud Books. Rider any age. (See Rules for Ridden Stallions)

Championship 'R1'

Method of Judging: -

Phase One: Performance & Freestyle Show 60 marks.

Phase Two: Conformation / Type and Suitability for Dressage 40 marks.

The individual Freestyle Show to include, Halt, Walk on a long rein, Ordinary trot serpentine, Extended trot on the diagonal, Canter serpentine with change of lead, Extended canter on the diagonal. Not to exceed 2 minutes.

Class 45 Ridden Competition Pony. Stallion, Mare or Gelding. Four years old and over. Not exceeding 148cms. Rider any age.
(See rules for Ridden Stallions)

Class 46 Ridden Competition Horse. Stallion, Mare or Gelding. Four years old and over. Exceeding 148cms. Rider any age.
(See rules for Ridden Stallions)

SASHES IN THIS RIDDEN LIGHT HORSE CHAMPIONSHIP ARE KINDLY SPONSORED BY PHOENIX EQUESTRIAN

RIDDEN LIGHT HORSE / PONY CHAMPIONSHIP (ch17):

First & Second placed exhibits from classes 32 – 46 to compete for the

2023 SWPA PHOENIX EQUESTRIAN Open Ridden Light Horse/Pony of the Year Sarah Partridge Memorial Trophy.

Kindly donated by Mr & Mrs L PARTRIDGE.

Sashes for Champion, Reserve Champion & First Reserve

**CHAMPION & RESERVE to go forward to the Supreme Ridden of Show Championship
to be held during Saturday night Evening Performance.**

MOUNTAIN & MOORLAND IN-HAND CLASSES

ALL ROSETTES IN CLASSES 50 - 61 ARE KINDLY SPONSORED BY PONDAROSA STUD

Championship 'M'

Please Note: All Ponies MUST be registered in their respective Pure Breed Society Stud Books.

Class 50 Miniature Shetland, any age. Not exceeding 34" Colt, Stallion, Filly, Mare or Gelding. (Special Rosette to Best Youngstock)

Class 51 Standard Shetland, Exmoor and Dartmoor. Youngstock. Colt, Filly, or Gelding. Yearling, Two and Three year old.
(Special Rosette to Best Yearling)

Class 52 Shetland, Exmoor and Dartmoor. Four and over. Stallion, Mare, or Gelding. (Special Best Gelding)
Special Rosette to the Highest Placed Standard Shetland Gelding in class 52 Kindly Donated by Andrea Dymott

Class 53 Welsh sections A & B. Youngstock. Colt, Filly, or Gelding. Yearling, Two and Three year old.
(Special Rosette to Best Yearling)

Class 54 Welsh sections A & B. Four and over. Stallion, Mare, or Gelding. (Special Best Gelding)

Class 55 Welsh sections C & D. Youngstock. Colt, Filly, or Gelding. Yearling, Two and Three year old.
(Special Rosette to Best Yearling)

Class 56 Welsh sections C & D. Four and over. Stallion, Mare, or Gelding. (Special Best Gelding)

Class 57 New Forest, Connemara, Dales, Fell and Highland. Youngstock. Colt, Filly, or Gelding. Yearling, Two and Three year old.
(Special Rosette to Best Yearling)

Class 58 New Forest, Connemara. Four and over. Stallion, Mare, or Gelding. (Special Best Gelding)

Class 59 Dales, Fell and Highland. Four and over. Stallion, Mare, or Gelding. (Special Best Gelding)

SASHES IN THIS IN-HAND MOUNTAIN & MOORLAND CHAMPIONSHIP ARE KINDLY SPONSORED BY PONDAROSA STUD

MOUNTAIN & MOORLAND IN-HAND CHAMPIONSHIP (ch20):

First & Second placed exhibits from classes 50 – 59 to compete for the

2023 SWPA PONDAROSA STUD In-Hand Mountain & Moorland of the Year Stepley Perpetual Cup.

Kindly donated by The Stepley Stud.

Special Rosette to the Highest Placed Welsh section A in Memory of GEORGE BALL Kindly Donated by Graham Young & Family

Sashes for Champion, Reserve Champion & First Reserve

**CHAMPION & RESERVE to go forward to the In-Hand Supreme Championship of Show
to be held during Saturday night Evening Performance.**



Kaydence Venom

Pondarosa Welsh D Stud

Sponsored by Alvahorse & Welsh Cob Shop

Alvahorse Products enhances natural beauty. Contact 07894044010 to order.

Exeter, Devon

Sponsors of the

SWPA Pondarosa Stud Family Showing Series

SWPA Mountain & Moorland In-Hand & Ridden Series

MOUNTAIN & MOORLAND RIDDEN CLASSES

ALL ROSETTES IN CLASSES 62 - 66 ARE KINDLY SPONSORED BY PONDAROSA STUD

Championship 'MI'

Please Note: - ALL Ridden Mountain & Moorland Classes WILL be split further according to entries received.

ALL exhibits MUST be registered in their respective PURE Breed Society Stud Books. Riders any age (See Rules for Ridden Stallions)

Class 62 Ridden Shetland, Exmoor, Dartmoor. Stallion, Mare or Gelding. Four years old and over.

Class 63 Ridden Welsh Sections A & B. Stallion, Mare or Gelding. Four years old and over.

Class 64 Ridden New Forest & Connemara. Stallion, Mare or Gelding. Four years old and over.

Class 65 Ridden Dales, Fell & Highland. Stallion, Mare or Gelding. Four years old and over.

Class 66 Ridden Welsh Sections C & D. Stallion, Mare or Gelding. Four years old and over.

SASHES IN THIS RIDDEN MOUNTAIN & MOORLAND CHAMPIONSHIP ARE KINDLY SPONSORED BY PONDAROSA STUD

MOUNTAIN & MOORLAND RIDDEN CHAMPIONSHIP (ch21):

First & Second placed exhibits from classes 62 – 66 to compete for the

2023 SWPA PONDAROSA STUD Ridden Mountain & Moorland of the Year Sugar Lump Salver.

Sashes for Champion, Reserve Champion & First Reserve

CHAMPION & RESERVE to go forward to the Supreme Ridden of Show Championship to be held during Saturday night Evening Performance.

JUNIOR RIDDEN CLASSES

ROSETTES IN CLASSES 70 - 71 ARE KINDLY SPONSORED BY BARROWHILL STUD

Championship 'J'

- Class 70 M&M Junior Ridden Small Breeds.** Mare or Gelding. Four years old and over registered in the respective Pure Breed Society Stud Books of Shetland, Dartmoor, Exmoor, Welsh A & B. Riders not to have attained their 14th birthday before 1st January in the current year.
- Class 71 M&M Junior Ridden Large Breeds.** Mare or Gelding. Four years old and over registered in the respective Pure Breed Society Stud Books of New Forest, Connemara, Dales, Fell, Highland, Welsh C & D. Riders not to have attained their 18th birthday before 1st January in the current year.

ROSETTES IN CLASSES 72 - 73 ARE KINDLY SPONSORED BY MRS KIM GOUGH

Championship 'JI'

- Class 72 Junior Open Ridden.** (excluding Mountain & Moorland). Mare or Gelding. Four years old and over. Not exceeding 138cms. Riders not to have attained their 14th birthday before 1st January in the current year.
- Class 73 Junior Open Ridden.** (excluding Mountain & Moorland). Mare or Gelding. Four years old and over. Exceeding 138cms. Riders not to have attained their 18th birthday before 1st January in the current year.

JUNIOR RIDDEN CHAMPIONSHIP (ch24):

SASHES IN THE JUNIOR RIDDEN CHAMPIONSHIP ARE KINDLY SPONSORED BY THE HEMMINGS FAMILY

First & Second placed exhibits from classes 62 – 66 to compete for the 2023 SWPA Junior Ridden of the Year Championship.

Sashes for Champion, Reserve Champion & First Reserve

**CHAMPION & RESERVE to go forward to the Supreme Ridden of Show Championship
to be held during Saturday night Evening Performance.**

RIDDEN ARAB & PART BRED CLASSES

ROSETTES & SASHES IN THE PART BRED RIDDEN CLASSES 74 - 82 ARE KINDLY SPONSORED BY SNUGGY HOODS

Championship 'G1'

- Class 74 Open Ridden Show Pony.** Mare or Gelding. Four years old and over. Not exceeding 148cms.
(Riders to be suitable size for pony ridden)

Championship 'H1'

- Class 75 Ridden Show Hunter Pony.** Mare or Gelding. Four years old and over. Not exceeding 153cms.
(Riders to be suitable size for pony ridden)

Championships 'G2' 'H2'

- Class 76 Ridden Intermediate Show Riding & Show Hunter Types.** Mare or Gelding. Four years old and over. Exceeding 146cms but not exceeding 158cms. (Riders to be suitable size for intermediate ridden)

Championship 'F1'

- Class 77 Ridden M&M (Non Welsh) Part Bred.** Stallion, Mare or Gelding. Four years old and over. Rider any age. (See Rules for Ridden Stallions)
- Class 78 Ridden Welsh Part Bred.** Stallion, Mare or Gelding. Four years old and over. Rider any age. (See Rules for Ridden Stallions)

Championship 'A1'

- Class 79 Ridden Part Bred & Anglo Arab. Any height.** Stallion, Mare or Gelding. Four years old and over. Rider any age. (See rules for Ridden Stallions)
- Class 80 Ridden Pure Bred Arab.** Stallion, Mare or Gelding Four years old and over. Rider any age. (See Rules for Ridden Stallions)

SASHES IN THIS ARAB & PART BRED RIDDEN CHAMPIONSHIP ARE KINDLY SPONSORED BY SNUGGY HOODS

RIDDEN ARAB & PART BRED CHAMPIONSHIP (ch28):

First & Second placed exhibits from classes 74 – 80 to compete for the 2023 SWPA SNUGGY HOODS Ridden Arab & Part Bred of the Year Championship.

Sashes for Champion, Reserve Champion & First Reserve

**CHAMPION & RESERVE to go forward to the Supreme Ridden of Show Championship
to be held during Saturday night Evening Performance.**

CLOSURE OF CLASSES:

**AN IN-HAND CLASS WILL BE DEEMED CLOSED TO LATE ENTRANTS WHEN THE
FIRST EXHIBIT BEGINS IT'S INITIAL TROT ROUND.
A RIDDEN CLASS WILL BE DEEMED CLOSED TO LATE ENTRANTS WHEN THE
EXHIBITORS BEGIN THE INITIAL TROT ROUND**



Snuggy Hoods

Sponsors of the

**South West Pony Association's Mini Ridden, Ridden Show Pony,
Ridden Hunter Pony, Ridden Intermediates, Ridden Part Breds &
Ridden Pure, Part Bred & Anglo Arab Championships**

Click [Here](#) to visit their web site

MINI RIDDEN CLASSES

**MINI RIDDEN ROSETTES & SASHES IN CLASSES 85 - 88
ARE KINDLY SPONSORED BY SNUGGY HOODS**

Championship 'K a'

Class 85 Open Show Pony / Show Hunter Pony Lead Rein. Mare or Gelding. Four years old and over not exceeding 122cms. Riders not to have attained their 9th birthday before 1st January in the current year. To be led by an attendant, and shown in a Snaffle Bridle. Lead Rein to be attached to the noseband only, and held in the Leader's outside hand.

Championship 'K b'

Class 86 Open Show Pony / Show Hunter Pony First Ridden. Mare or Gelding. Four years old and over not exceeding 122cms. Riders not to have attained their 10th birthday before 1st January in the current year. To be shown in a Snaffle Bridle.

Championship 'K c'

Class 87 M&M Lead Rein. Mare or Gelding. Four years old and over not exceeding 122cms. Registered in the respective Pure Breed Society Stud Books of Shetland, Dartmoor, Exmoor, New Forest, Welsh A & B. Riders not to have attained their 9th birthday before 1st January in the current year. To be led by an attendant and shown in a Snaffle Bridle. Lead Rein to be attached to the noseband only, and held in the Leader's outside hand.

Championship 'K d'

Class 88 M&M First Ridden. Mare or Gelding. Four years old and over not exceeding 128cms. Registered in the respective Pure Breed Society Stud Books of Shetland, Dartmoor, Exmoor, New Forest, Welsh A & B. Riders not to have attained their 12th birthday before 1st January in the current year. To be shown in a Snaffle Bridle.

**SASHES IN THIS MINI RIDDEN CHAMPIONSHIP ARE KINDLY SPONSORED BY
SNUGGY HOODS**

MINI RIDDEN CHAMPIONSHIP

First & Second placed exhibits from classes 85 – 88 to compete for the 2023 SWPA SNUGGY HOODS Mini Ridden Championship

**This championship will take place in the All Weather Arena during the 'Evening Performance' on Saturday.
EVENING DRESS CODE**

YOUNG HANDLER CLASSES

YOUNG HANDLER ROSETTES IN CLASSES 90 – 92 ARE KINDLY SPONSORED By ANGELA TUCKER BHS AI Int SM

Championship 'Y'

To be judged on the child's ability to present and control the pony whilst in the ring.

Mare or Gelding. NO STALLIONS OR COLTS. Handlers age as at 1st January in the current year.

Class 90 Young Handler. Handlers to have attained their 4th birthday, but not to have attained their 9th birthday before 1st January in the current year.

Class 91 Young Handler. Handlers to have attained their 9th birthday, but not to have attained their 14th birthday before 1st January in the current year.

Class 92 Young Handler. Handlers to have attained their 14th birthday, but not to have attained their 19th birthday before 1st January in the current year.

SASHES IN THIS YOUNG HANDLER CHAMPIONSHIP ARE KINDLY SPONSORED BY ANGELA TUCKER BHS AI Int SM

YOUNG HANDLER CHAMPIONSHIP (ch32):

First & Second placed exhibits from classes 90 – 92 to compete for the 2023 SWPA ANGELA TUCKER Young Handler of the Year Carmaco Shield.
Kindly donated by Carmaco Stud

Sashes for Champion, Reserve Champion & First Reserve

NOVICE RIDDEN CLASSES

ALL ROSETTES IN CLASSES 100 – 105 ARE KINDLY SPONSORED BY SARA & PETE WAINWRIGHT

PLEASE NOTE: SNAFFLE BRIDLES ONLY will be permitted in ALL Novice Ridden classes.

Not to have been placed first in the type of class entered before 1st January in the current year.

(Please see list of permitted bits listed in the accompanying leaflet with this schedule or see the list posted outside the Secretary's Office)

Championship 'N4'

Class 100 Novice Lead Rein. Any type. Mare or Gelding. Four years old and over, **not exceeding 122cms.**

(Mountain & Moorland ponies must be registered in their respective Pure Breed Society Stud Books) Riders not to have attained their 8th birthday if riding Show/Riding or Show Hunter type pony, or 9th birthday if riding an M&M type pony, before 1st January in the current year.

To be shown in a SNAFFLE BRIDLE. Lead Rein to be attached to the noseband only, and held in the Leader's outside hand.

Championship 'N5'

Class 101 Novice First Ridden. Any type. Mare or Gelding. Four years old and over, **not exceeding 122cms.**

(Mountain & Moorland ponies not exceeding 128cms and must be registered in their respective Pure Breed Society Stud Books)

Riders not to have attained their 10th birthday if riding Show/Riding or Show Hunter type pony or 12th birthday if riding an M&M type pony before the 1st January in the current year. To be shown in a SNAFFLE BRIDLE.

Championship 'N'

Class 102 Novice Ridden Small Breeds. Stallion, Mare or Gelding. Four years old and over. Registered in the respective Pure Breed Society Stud Books of Shetland, Dartmoor, Exmoor, Welsh sections A & B. Riders any age. *(See Rules for Ridden Stallions)*

Class 103 Novice Ridden Large Breeds. Stallion, Mare or Gelding. Four years old and over. Registered in the respective Pure Breed Society Stud Books of New Forest, Connemara, Fells, Dales, Highland, Welsh sections C & D. Riders any age. *(See Rules for Ridden Stallions)*

Championship 'N1' 'N2'

Class 104 Novice Ridden Show Pony / Show Hunter Pony / Intermediate. Mare or Gelding. Four years old and over.

Show Pony not exc. 148cms, Show Hunter Pony not exc. 153cms, Intermediate, exc. 146cms but not exc. 158cms

(Riders to be suitable size for equine ridden)

Championship 'N3'

Class 105 Novice Ridden Hack / Riding Horse / Hunter / Cob. Mare or Gelding. Four years old and over.

Hack not to exceed 160cms. Riding Horses/Hunter to exceed 148cms. Riders to have attained their 15th birthday before 1st January in the current year. Cobs, any height, (Riders to be suitable size for equine ridden)

SASHES IN THIS NOVICE RIDDEN CHAMPIONSHIP ARE KINDLY SPONSORED BY SARA & PETE WAINWRIGHT

NOVICE RIDDEN CHAMPIONSHIP (ch33):

First & Second placed exhibits from classes 100 – 105 to compete for the 2023 SWPA SARA & PETE WAINWRIGHT Novice Ridden of the year Championship.

Sashes for Champion, Reserve Champion & First Reserve

**CHAMPION & RESERVE to go forward to the Supreme Ridden of Show Championship
to be held during Saturday night Evening Performance.**

PLEASE NOTE

**ALL GROOMS MUST DRESS APPROPRIATELY FOR A CHAMPIONSHIP SHOW
AND WEAR A HAT WHILST IN THE RING**

Thank you for your cooperation

ROSETTES & SASHES IN THE WORKING HUNTER CLASSES 125 - 134
ARE KINDLY SPONSORED BY BARROWHILL STUD

MINI WORKING HUNTER CLASSES

Championship 'L'

Class 125 Lead Rein WHP, All Types. Mare or Gelding. Four years old and over not exceeding 122cms. Mountain & Moorland ponies must be registered with their respective Pure Breed Society Stud Books.
Riders not to have attained their 9th birthday before 1st January in the current year.
Riders not to have competed off the Lead Rein in **ANY** WHP classes before 1st January in the current year.
To be shown in a SNAFFLE BRIDLE. The Lead Rein to be attached to the noseband only, and held in the Leader's outside hand.

Championship 'La'

Class 126 First Ridden WHP, All Types. Mare or Gelding. Four years old and over not exceeding 122cms. Mountain & Moorland ponies must be registered with their respective Pure Breed Society Stud Books.
Riders not to have attained their 10th birthday before 1st January in the current year.
Riders not to have competed in **ANY** WHP classes with jumps exceeding 1ft 9inches before 1st January in the current year.
To be shown in a SNAFFLE BRIDLE.

MINI WORKING HUNTER CHAMPIONSHIP (ch34):

First & Second placed Exhibits from classes 125 – 126 to compete for the 2023 SWPA BARROWHILL STUD Mini Working Hunter Championship.

Sashes for Champion, Reserve Champion & First Reserve

CHAMPION & RESERVE to go forward to the Supreme Working Hunter of Show Championship to be held during Saturday night Evening Performance.

NOVICE WORKING HUNTER CLASSES

NOVICE RULES : Equines **NOT** to have been placed first in **ANY** Working Hunter Class before 1st January in the current year.

PLEASE NOTE: SNAFFLE BRIDLES ONLY will be permitted in ALL Novice Working Hunter classes. (Please see list of permitted bits listed in the accompanying leaflet with this schedule or see the list posted outside the Secretary's Office)

Championship 'LI'

Class 127 Novice Working Hunter Pony. All Types. Not Exceeding 122cms. Stallion, Mare or Gelding. Four years old and over. Mountain & Moorland Ponies MUST be registered with their respective Breed Society Stud Books.
Riders any age. (See rules for Ridden Stallions)

Class 128 Novice Working Hunter Pony. All Types. Exceeding 122cms, but not Exceeding 133cms. Stallion, Mare or Gelding. Four years old and over. Mountain & Moorland Ponies MUST be registered with their respective Breed Society Stud Books.
Riders any age. (See rules for Ridden Stallions)

Class 129 Novice Working Hunter Pony. All Types. Exceeding 133cms, but not Exceeding 143cms. Stallion, Mare or Gelding. Four years old and over. Mountain & Moorland Ponies MUST be registered with their respective Breed Society Stud Books.
Riders any age. (See rules for Ridden Stallions)

Class 130 Novice Working Hunter Pony. All Types. Exceeding 143cms. Stallion, Mare or Gelding. Four years old and over. Mountain & Moorland Ponies MUST be registered with their respective Breed Society Stud Books.
Riders any age. (See rules for Ridden Stallions)

SASHES IN THIS NOVICE WORKING HUNTER CHAMPIONSHIP
ARE KINDLY SPONSORED BY BARROWHILL STUD

NOVICE WORKING HUNTER CHAMPIONSHIP (ch35):

First & Second placed Exhibits from classes 127 – 130 to compete for the 2023 SWPA BARROWHILL STUD Novice Working Hunter Championship.

Sashes for Champion, Reserve Champion & First Reserve

CHAMPION & RESERVE to go forward to the Supreme Working Hunter of Show Championship to be held during Saturday night Evening Performance.

South West Pony Association

Supreme In-Hand & Ridden Competitions

Renamed

SWPA WYNSAND In-Hand & Ridden Finals

***Gaining one of the qualifying cards will guarantee*
your place in one of the 'Evening Performances'***

There will only be a limited number of Affiliated Shows holding these qualifiers so don't miss out.

Locations for these qualifiers can be found on our Facebook Page

****SWPA Membership required & Entry Fee Paid***

OPEN WORKING HUNTER CLASSES

Championship 'L2'

- Class 131 Open Working Hunter. All Types. Exceeding 143cms.** Stallion, Mare or Gelding. Four years old and over. Mountain & Moorland Ponies MUST be registered with their respective Breed Society Stud Books. Riders any age. *(See rules for Ridden Stallions)*
- Class 132 Open Working Hunter Pony. All Types. Exceeding 133cms, but not Exceeding 143cms.** Stallion, Mare or Gelding. Four years old and over. Mountain & Moorland Ponies MUST be registered with their respective Breed Society Stud Books. Riders any age. *(See rules for Ridden Stallions)*
- Class 133 Open Working Hunter Pony. All Types. Exceeding 122cms, but not Exceeding 133cms.** Stallion, Mare or Gelding. Four years old and over. Mountain & Moorland Ponies MUST be registered with their respective Breed Society Stud Books. Riders any age. *(See rules for Ridden Stallions)*
- Class 134 Open Working Hunter Pony. All Types. Not Exceeding 122cms.** Stallion, Mare or Gelding. Four years old and over. Mountain & Moorland Ponies MUST be registered with their respective Breed Society Stud Books. Riders any age. *(See rules for Ridden Stallions)*

**SASHES IN THIS OPEN WORKING HUNTER CHAMPIONSHIP
ARE KINDLY SPONSORED BY BARROWHILL STUD**

OPEN WORKING HUNTER CHAMPIONSHIP (ch36):

First & Second placed exhibits from classes 131 – 134 to compete for the 2023 SWPA BARROWHILL STUD Open Working Hunter of the Year Championship.

Sashes for Champion, Reserve Champion & First Reserve

CHAMPION & RESERVE to go forward to the Supreme Working Hunter of Show Championship to be held during Saturday night Evening Performance.

SUPREME WORKING HUNTER OF THE SHOW CHAMPIONSHIP:

Champion & Reserve from the following sections: -

Mini Working Hunter, Novice Working Hunter, Open Working Hunter.

**This championship will take place in the All Weather Arena during the 'Evening Performance' on Saturday.
EVENING DRESS CODE**



Kdm-photography

- Dressage
- Showing
- Show-Jumping
- Clinics
- Cross Country
- Working Hunter
- Arena Eventing
- Photoshoots
- Edits a speciality

Contact Karen – 07966068072
www.kdm-photography@hotmail.com

ON-LINE PRE-ENTRIES MUST BE RECEIVED BY MIDNIGHT ON 25 AUGUST 2023
www.showingscene.com

Entries after this date and on the day entries at extra cost

SWPA RMB FESTIVAL CLASSES 201 - 320

PLEASE NOTE: You do NOT need to be registered with SWPA to enter classes 201 – 320
If you qualify from any of the classes you will need to register to be able to enter the Championship Classes.

OPEN IN-HAND CLASSES

THESE CLASSES AND OPEN IN-HAND CHAMPIONSHIP ARE KINDLY SPONSORED BY L HANN & A BURKS

SWPA 2023 CHAMPIONSHIP QUALIFIERS

- Class 201 Riding Pony / Hunter Pony. Youngstock.** Yearling, Two & Three year old. (*Special Rosette to Best Yearling*)
Riding Pony not to exceed 148cms at maturity. Hunter Pony not to exceed 153cms at maturity.
- Class 202 Riding Pony / Hunter Pony. Four and over.** Stallion, Mare or Gelding. Riding Pony not to exceed 148cms. Hunter Pony not to exceed 153cms.
- Class 203 Pure, Anglo & Part Bred Arab. Youngstock.** Yearling, Two & Three year old. (*Special Rosette to Best Yearling*)
- Class 204 Pure, Anglo & Part Bred Arab. Four and over.** Stallion, Mare or Gelding.
- Class 205 Mountain & Moorland Part Bred. Youngstock.** Yearling, Two & Three year old. (*Special Rosette to Best Yearling*)
- Class 206 Mountain & Moorland Part Bred. Four and over.** Stallion, Mare or Gelding.
- Class 207 Pony to make Lead Rein Pony. Youngstock.** Yearling, Two and Three year old. (*Special Rosette to Best Yearling*)
- Class 208 Riding Horse / Hack. Youngstock.** Yearling, Two & Three year old. Riding Horse to exceed 148cms at maturity.
Hack not to exceed 160cms at maturity. (*Special Rosette to Best Yearling*)
- Class 209 Riding Horse / Hack. Four and over.** Mare or Gelding. Riding Horse to exceed 148cms. Hack not to exceed 160cms.
- Class 210 Hunter Type. Any age.** To exceed 148cms at maturity. (*Special Rosette to Best Youngstock*)
- Class 211 X Race Horse. Four and over.** Stallion, Mare or Gelding. The equine MUST have raced either on the flat, over jumps or point-to-point.
To be judged on the suitability to compete in all disciplines.

Note: Coloured classes to include, Skewbald, Piebald, Appaloosa, Spotted, Palomino, Dun & Silver Dapple.

Class 212 Coloured Pony. Any age. Not to exceed 148cms at maturity. (*Special Rosette to Best Youngstock*)

Class 213 Coloured Horse. Any age. To exceed 148cms at maturity. (*Special Rosette to Best Youngstock*)

The two highest placed exhibits not already qualified in classes 201 – 206, 208 – 213 will qualify for the respective 2023 SWPA Championship Classes

OPEN IN-HAND CHAMPIONSHIP (ch41):

Kindly Sponsored by L Hann & A Burks

1st & 2nd placed exhibits from classes 201 – 213 to compete.

**CHAMPION, RESERVE & FIRST RESERVE to go forward to the SWPA RMB Festival In-Hand Championship during
Thursday Evening Performance**

OPEN IN-HAND CLASSES

SWPA 2023 CHAMPIONSHIP QUALIFIERS

- Class 214 Competition Pony. Any age.** Not to exceed 148cms at maturity. (*Special Rosette to Best Youngstock*)
- Class 215 Competition Horse. Any age.** To exceed 148cms at maturity. (*Special Rosette to Best Youngstock*)
- Class 216 Veteran Horse / Pony. Fifteen to Nineteen years old.**
- Class 217 Veteran Horse / Pony. Twenty years old and over.**
Special Rosette to Oldest Veteran in class 217 Kindly Donated by Lorna Hewitt
- Class 218 Traditional Cob Type. Any age.** Unplaited. (*Special Rosette to Best Youngstock*)
- Class 219 Show Cob. Any age.** (*Special Rosette to Best Youngstock*)
- Class 220 World Breeds, inc. Moorland & Hill Bred. Any age.** Colt, Stallion, Filly, Mare or Gelding. (*Special Rosette to Best Youngstock*)
(*Excluding British Native Breeds, M&M Part Breds, Pure, Part Bred & Anglo Arab*)
- Class 221 Driving Type. Any Type. Youngstock.** Yearling, Two & Three year old. (*Special Rosette to Best Yearling*)
- Class 222 Driving Type. Any Type. Four and over.** Stallion, Mare or Gelding.
- Class 223 Miniature Horse. Any age.** (excluding Shetlands) Must be registered with their respective Miniature Horse Society.
(*Special Rosette to Best Youngstock*)
- Class 224 Gelding. Any age. (exc. M&M)** (*Special Rosette to Best Youngstock*)
- Class 225 Filly or Mare. Any age. (exc. M&M)** (*Special Rosette to Best Youngstock*)
- Class 226 Colt or Stallion. Any age. (exc. M&M)** (*Special Rosette to Best Youngstock*)
- Class 227 Owner Bred. Any age. (exc. M&M)** (*Special Rosette to Best Youngstock*)

The two highest placed exhibits not already qualified in classes 214 – 227 will qualify for the respective 2023 SWPA Championship Classes

OPEN IN-HAND CHAMPIONSHIP (ch42):

1st & 2nd placed exhibits from classes 214 – 227 to compete.

**CHAMPION, RESERVE & FIRST RESERVE to go forward to the SWPA RMB Festival In-Hand Championship during
Thursday Evening Performance**

***Please remember it is exhibitor's responsibility to be in the correct class and on time.
Exhibitors are also expected to wear the correct riding equipment as per the show rules.
Thank you for your co-operation, Richard Broad (chairman)***

**ALL PRIZE MONEY MUST BE COLLECTED BEFORE
10.00am Sunday 03 September**

MOUNTAIN & MOORLAND IN-HAND CLASSES

THESE CLASSES AND MOUNTAIN & MOORLAND IN-HAND CHAMPIONSHIP ARE KINDLY SPONSORED BY CASTLE COPSE EQUESTRIAN

SWPA 2023 CHAMPIONSHIP QUALIFIERS

All ponies in this section **MUST** be registered with their respective Pure Breed Societies.

Class 230 Miniature Shetland. Any age. Not exceeding 34". (Special Rosette to Best Youngstock)

Class 231 Standard Shetland, Exmoor, Dartmoor. Youngstock. Yearling, Two and Three year old. (Special Rosette to Best Yearling)

Class 232 Standard Shetland, Exmoor, Dartmoor. Four and over. Stallion, Mare or Gelding.

Special Rosette to Highest Placed Standard Shetland Gelding in class 232 Kindly Donated by Andrea Dymott

Class 233 Welsh sections A & B. Youngstock. Yearling, Two and Three year old. (Special Rosette to Best Yearling)

Class 234 Welsh sections A & B. Four and over. Stallion, Mare or Gelding.

Class 235 Welsh sections C & D. Youngstock. Yearling, Two and Three year old. (Special Rosette to Best Yearling)

Class 236 Welsh sections C & D. Four and over. Stallion, Mare or Gelding.

Class 237 New Forest, Connemara. Any age. (Special Rosette to Best Youngstock)

Class 238 Dales, Fell, Highland Any age. (Special Rosette to Best Youngstock)

Class 239 Mountain & Moorland Gelding. Any age. (Special Rosette to Best Youngstock)

Class 240 Mountain & Moorland Filly / Mare. Any age. (Special Rosette to Best Youngstock)

Class 241 Mountain & Moorland Colt / Stallion. Any age. (Special Rosette to Best Youngstock)

Class 242 Owner Bred. M&M only. Any age. (Special Rosette to Best Youngstock)

The two highest placed exhibits not already qualified in classes 230 – 242 will qualify for the respective 2023 SWPA Championship Classes

MOUNTAIN & MOORLAND IN-HAND CHAMPIONSHIP (ch43):

Kindly Sponsored by Castle Copse Equestrian

1st & 2nd placed exhibits from classes 230– 242 to compete.

CHAMPION, RESERVE & FIRST RESERVE to go forward to the SWPA RMB Festival In-Hand Championship during Thursday's Evening Performance

YOUNG HANDLER CLASSES

SWPA 2023 CHAMPIONSHIP QUALIFIERS

MARES or GELDINGS ONLY. **NO STALLIONS or COLTS.**

Class 245 Young Handler, 4 – 8 years. Handlers to have attained their 4th birthday, but not to have attained their 9th birthday before 1st January in the current year.

Class 246 Young Handler, 9 – 13 years. Handlers to have attained their 9th birthday, but not to have attained their 14th birthday before 1st January in the current year.

Class 247 Young Handler, 14 – 18 years. Handlers to have attained their 14th birthday, but not to have attained their 19th birthday before 1st January in the current year.

The two highest placed Handlers not already qualified in classes 245 – 247 will qualify for the respective 2023 SWPA Championship Classes

YOUNG HANDLER CHAMPIONSHIP (ch44):

1st & 2nd placed exhibitors from classes 245 – 247 to compete.

MINI RIDDEN CLASSES

SWPA 2023 CHAMPIONSHIP QUALIFIERS

Class 250 Novice Lead Rein. Pony NOT to have been placed first in any Lead Rein class before 1st January in the current year.

Any type. Mare or Gelding. Four years old and over, not exceeding 122cms.

(Mountain & Moorland ponies must be registered in their respective Pure Breed Society Stud Books)

Riders not to have attained their, 7th birthday if riding Show/Riding type pony, 8th birthday if riding Show Hunter type pony or 9th birthday if riding an M&M type pony, before 1st January in the current year.

To be shown in a SNAFFLE BRIDLE. The Lead Rein to be attached to the noseband only, and held in the Leader's outside hand.

Class 251 Novice First Ridden. Pony NOT to have been placed first in any First Ridden class before 1st January in the current year.

Any type. Mare or Gelding. Four years old and over, not exceeding 122cms.

(Mountain & Moorland ponies must be registered in their respective Pure Breed Society Stud Books)

Riders not to have attained their, 10th birthday if riding Show/Riding or Show Hunter type pony or 12th birthday if riding an M&M type pony before the 1st January in the current year. To be shown in a SNAFFLE BRIDLE.

Class 252 Leading Rein Open Show Pony & Show Hunter Pony. Mare or Gelding. Four years old and over, not exceeding 122cms.

Riders not to have attained their 9th birthday before 1st January in the current year. To be led by an attendant, and shown in a SNAFFLE BRIDLE, the Lead Rein to be attached to the noseband only, and held in the Leader's outside hand.

Class 253 First Ridden Open Show Pony & Show Hunter Pony. Mare or Gelding. Four years old and over, not exceeding 122cms.

Riders not to have attained their 10th birthday before 1st January in the current year. To be shown in a SNAFFLE BRIDLE.

Class 254 M&M Leading Rein. Mare or Gelding. Four years old and over, not exceeding 122cms, registered in the respective Pure Breed Society Stud Books of Shetland, Dartmoor, Exmoor, New Forest, Welsh A and B.

Riders not to have attained their 9th birthday before 1st January in the current year. To be led by an attendant and shown in a SNAFFLE BRIDLE, Lead Rein to be attached to the noseband only, and held in the Leader's outside hand.

Class 255 M&M First Ridden. Mare or Gelding. Four years old and over not exceeding 128cms, registered in the respective Pure Breed Society Stud Books of Shetland, Dartmoor, Exmoor, New Forest, Welsh A and B.

Riders not to have attained their 12th birthday before 1st January in the current year. To be shown in a SNAFFLE BRIDLE.

The two highest placed exhibits not already qualified in classes 250 – 255 will qualify for the respective 2023 SWPA Championship Classes

MINI RIDDEN CHAMPIONSHIP (ch45):

1st & 2nd placed ponies from classes 250 – 255 to compete.

CHAMPION & RESERVE to go forward to the SWPA RMB Festival Ridden Championship during the Thursday Evening Performance

NOVICE RIDDEN CLASSES

NOVICE RIDDEN CLASSES 260 – 264. Ponies not to have been placed first in ANY ridden class before 1st January in the current year.

SNAFFLE BRIDLES ONLY

THESE CLASSES AND NOVICE RIDDEN CHAMPIONSHIP ARE KINDLY SPONSORED BY KEVAN BASKEYFIELD

SWPA 2023 CHAMPIONSHIP QUALIFIERS

Class 260 Novice Ridden Mountain & Moorland Small Breeds. Stallion, Mare or Gelding. Four years old and over. Registered in the Pure Breed Society Stud books of Shetland, Dartmoor, Exmoor, Welsh A & B. Riders any age. (*see rules for Ridden Stallions*)
To be shown in a SNAFFLE BRIDLE.

Class 261 Novice Ridden Mountain & Moorland Large Breeds. Stallion, Mare or Gelding. Four years old and over. Registered in the Pure Breed Society Stud books of New Forest, Connemara, Dales, Fell, Highland, Welsh C & D. Riders any age. (*see rules for Ridden Stallions*)
To be shown in a SNAFFLE BRIDLE.

Class 262 Novice Ridden Riding Pony / Show Hunter Pony. Stallion, Mare or Gelding. Four years old and over, not exceeding 153cms.
(Riders to be suitable size for pony ridden)
To be shown in a SNAFFLE BRIDLE. (*See Rules for Ridden Stallions*)

Class 263 Novice Ridden Intermediate. Mare or Gelding. Four years old and over, exceeding 146cms but not exceeding 158cms.
(Riders to be suitable size for equine ridden)
To be shown in a SNAFFLE BRIDLE.

Class 264 Novice Ridden Hack / Riding Horse / Hunter / Cob. Mare or Gelding. Four years old and over.
Hack not to exceed 160cms. Riding Horses/Hunter to exceed 148cms. Riders to have attained their 15th birthday before 1st January in the current year. Cobs, any height, (Riders to be suitable size for equine ridden) To be shown in a SNAFFLE BRIDLE.

The two highest placed exhibits not already qualified in classes 260 – 264 will qualify for the respective 2023 SWPA Championship Classes

NOVICE RIDDEN CHAMPIONSHIP (ch46):

Kindly Sponsored by Kevan Baskeyfield

1st & 2nd placed exhibits from classes 260 – 264 to compete.

CHAMPION & RESERVE to go forward to the SWPA RMB Festival Ridden Championship during the Thursday Evening Performance

MOUNTAIN & MOORLAND RIDDEN CLASSES

THESE CLASSES AND MOUNTAIN & MOORLAND RIDDEN CHAMPIONSHIP ARE KINDLY SPONSORED BY TIREVE, DYRFAL & TIRFFAL STUD

SWPA 2023 CHAMPIONSHIP QUALIFIERS

All ponies in this section MUST be registered with their respective Pure Breed Societies.

Class 265 Ridden Shetland, Exmoor, Dartmoor. Stallion, Mare or Gelding. Four years old and over.
Rider any age. (*See rules for Ridden Stallions*)

Class 266 Ridden Welsh sections A & B. Stallion, Mare or Gelding. Four years old and over.
Rider any age. (*See rules for Ridden Stallions*)

Class 267 Ridden Welsh sections C & D. Stallion, Mare or Gelding. Four years old and over.
Rider any age. (*See rules for Ridden Stallions*)

Class 268 Ridden New Forest, Connemara. Stallion, Mare or Gelding. Four years old and over.
Rider any age. (*See rules for Ridden Stallions*)

Class 269 Ridden Dales, Fell, Highland. Stallion, Mare or Gelding. Four years old and over.
Rider any age. (*See rules for Ridden Stallions*)

The two highest placed exhibits not already qualified in classes 265 – 269 will qualify for the respective 2023 SWPA Championship Classes

MOUNTAIN & MOORLAND RIDDEN CHAMPIONSHIP (ch47):

Kindly Sponsored by Tireve, Dyrfal & Tirffal Stud

1st & 2nd placed exhibits from classes 265 – 269 to compete.

CHAMPION & RESERVE to go forward to the SWPA RMB Festival Ridden Championship during the Thursday Evening Performance

OPEN RIDDEN CLASSES

SWPA 2023 CHAMPIONSHIP QUALIFIERS

Class 270 Ridden Show Pony / Show Hunter Pony. Mare or Gelding. Four years old and over.
Show Pony not exceeding 148cms. Show Hunter Pony not exceeding 153cms
(Riders to be suitable size for pony ridden)

Class 271 Ridden Intermediate SRT & SHT. Mare or Gelding. Four years old and over, exceeding 146cms, but not exceeding 158cms
(Riders to be suitable size for equine ridden)

Class 272 Ridden Part Bred Mountain & Moorland. Stallion, Mare or Gelding. Four years old and over.
Riders any age. (*See Rules for Ridden Stallions*)

Class 273 Ridden Pure, Part Bred or Anglo Arab. Stallion, Mare or Gelding. Four years old and over.
Riders any age. (*See Rules for Ridden Stallions*)

Class 274 Ridden Riding Horse / Hack. Mare or Gelding. Four years old and over. Riding Horse exceeding 148cms. Hack not to exceed 160cms.
Riders of Riding Horses to have attained their 15th birthday by 1st January in the current year.

Class 275 Ridden Light/Middle/Heavyweight Hunter. Mare or Gelding. Four years old and over.
Riders to have attained their 16th birthday by 1st January in the current year.

Class 276 Ridden Open Light/Heavyweight Cob. Mare or Gelding. Four years old and over. *This class includes Maxi Cobs*
(Riders to be suitable size for equine ridden)

Class 277 Ridden Traditional Cob. (Unplaited) Stallion, Mare or Gelding. Four years old and over.
Riders any age. (*See Rules for Ridden Stallions*)

Note: Coloured class to include, Skewbald, Piebald, Appaloosa, Spotted, Palomino, Dun & Silver Dapple.

Class 278 Ridden Coloured Pony. Stallion, Mare or Gelding, not exceeding 148cms. Four years old and over.
Riders any age. (*See Rules for Ridden Stallions*)

Class 279 Ridden Coloured Horse. Stallion, Mare or Gelding, exceeding 148cms. Four years old and over.
Riders any age. (*See Rules for Ridden Stallions*)

Class 280 Ridden Competition Pony/Horse. (excluding M&M) Stallion, Mare or Gelding. Four years old and over. Riders any age. *(See Rules for Ridden Stallions)*

Class 281 Ridden Competition Mountain & Moorland. Stallion, Mare or Gelding, Four years old and over, registered with their respective Breed Society Stud Books. *(See Rules for Ridden Stallions)*

Class 282 Ridden X Race Horse. Stallion, Mare or Gelding. Four years and over. The equine MUST have raced either on the flat, over jumps or point-to-point. To be judged on the suitability to compete in all disciplines. Riders to have attained their 15th birthday before 1st January in the current year. *(See Rules for Ridden Stallions)*

Class 283 Ridden Pre-Veteran. Fifteen to Nineteen years old. Stallion, Mare or Gelding. Riders any age. *(See Rules for Ridden Stallions)*

Class 284 Ridden Veteran. Twenty years old and over. Stallion, Mare or Gelding. Riders any age. *(See Rules for Ridden Stallions)*

Class 285 Ridden World Breeds, inc. Moorland & Hill Bred. (Excluding British Native Breeds, M&M Part Breds, Pure, Part Bred & Anglo Arabs) Stallion, Mare or Gelding. Four years old and over. Riders any age. *(See Rules for Ridden Stallions)*

The two highest placed exhibits not already qualified in classes 270 – 285 will qualify for the respective 2023 SWPA Championship Classes

OPEN RIDDEN CHAMPIONSHIP (ch48):

1st & 2nd placed exhibits from classes 270 – 285 to compete.

CHAMPION & RESERVE to go forward to the SWPA RMB Festival Ridden Championship during the Thursday Evening Performance

WALK & TROT BEGINNERS CLASSES

THESE CLASSES AND WALK & TROT CHAMPIONSHIP ARE KINDLY SPONSORED BY THE DRAPER FAMILY

CLASSES 290 – 292 ARE FOR TRUE BEGINNERS. WALK AND TROT SHOW ONLY.

Class 290 Beginners Walk & Trot. Riders Sixteen & over. Any type. Four years old and over. Riders to have attained their 16th birthday before 1st January in the current year.

Class 291 Beginners Lead Rein. Riders 3 – 5 years old. Ponies any type suitable for size of rider. Riders to have attained their 3rd birthday but not to have attained their 6th birthday before 1st January in the current year.

Class 292 Beginners First Ridden. Riders 4 – 6 years old. Ponies any type suitable for size of rider. Riders to have attained their 4th birthday but not to have attained their 7th birthday before 1st January in the current year.

BEGINNERS RIDDEN CHAMPIONSHIP (ch49):

Kindly Sponsored by The Draper Family

1st & 2nd placed exhibits from classes 290 – 292 to compete.

BEST TURNED OUT CLASSES

THESE CLASSES AND BEST TURNED OUT CHAMPIONSHIP ARE KINDLY SPONSORED BY LAURA BUTTERS

Class 295 Best Turned Out Open Under Saddle. (Excluding Mountain & Moorland) Stallion, Mare or Gelding. Four years old and over. *(Including Lead Rein)*

Class 296 Best Turned Out Mountain & Moorland Under Saddle. Stallion, Mare or Gelding. Four years old and over. *(Including Lead Rein)*

BEST TURNED OUT CHAMPIONSHIP (ch51):

Kindly Sponsored by Laura Butters

1st & 2nd placed exhibitors from classes 295 – 296 to compete.

JUNIOR RIDDEN CLASSES

SWPA 2023 CHAMPIONSHIP QUALIFIERS

Class 297 Junior Ridden Open, n/exc. 138cms. (exc M&M). Mare or Gelding. Four years old and over. Riders not to have attained their 14th birthday before 1st January in the current year.

Class 298 Junior Ridden Open, exc. 138cms. (exc M&M). Mare or Gelding. Four years old and over. Riders not to have attained their 18th birthday before 1st January in the current year.

Class 299 Junior Small Breeds M&M Ridden. Mare or Gelding. Four years old and over, registered in their respective Pure Breed Society Stud books of Shetland, Exmoor, Dartmoor, Welsh A & B. Riders not to have attained their 14th birthday before 1st January in the current year.

Class 300 Junior Large Breeds M&M Ridden. Mare or Gelding. Four years old and over, registered in their respective Pure Breed Society Stud books of New Forest, Connemara, Dales, Fell, Highland, Welsh C & D. Riders not to have attained their 18th birthday before 1st January in the current year.

The two highest placed exhibits not already qualified in classes 297 – 300 will qualify for the respective 2023 SWPA Championship Classes

JUNIOR RIDDEN CHAMPIONSHIP (ch52):

1st & 2nd placed exhibits from classes 297 – 300 to compete.

CHAMPION & RESERVE to go forward to the SWPA RMB Festival Ridden Championship during the Thursday Evening Performance

SENIOR RIDERS CLASSES

Class 304 Senior Riders 40 – 55 year old. Equine any type. Riders to have attained their 40th birthday but not attained their 56th birthday before 1st January in the current year.

Class 305 Senior Riders 56 years old and over. Equine any type. Riders to have attained their 56th birthday before 1st January in the current year.

1st & 2nd placed exhibits from classes 304 – 305 to go forward to the Senior Riders Championship on Friday Evening.

FAMILY HORSE/PONY & RIDING CLUB HORSE/PONY

Class 306 Family Horse / Pony Ridden. Mare or Gelding. Four years old and over. Any Height. To be ridden in a SNAFFLE BRIDLE. NO SPURS or WHIPS/CANS. To be judged on Manners and Suitability for any member of the family to ride.

Class 307 Riding Club Horse / Pony Ridden. Mare or Gelding. Four years old and over. Class will be judged on individual show, manners of horse/pony and it's suitability for the rider.

FAMILY HORSE/PONY, RIDING CLUB HORSE/PONY CHAMPIONSHIP (ch54):

1st & 2nd placed exhibitors from classes 306 – 307 to compete

SWPA MASTER CLASS

These classes are designed to help exhibitors get the best out of their equines whilst in the ring. Judges will assess your performance and give helpful advice on ways to improve your results in the ring.

WORKING HUNTER

Class MC1 Working Hunter Horse / Pony. Any Type. Four years old and over. Rider any age suitably mounted.

NOVICE WORKING HUNTER CLASSES

NOVICE RULES : *Equines NOT to have been placed first in ANY Working Hunter Class before 1ST January in the current year.*

PLEASE NOTE: SNAFFLE BRIDLES ONLY will be permitted in ALL Novice Working Hunter classes. *(Please see list of permitted bits listed in the accompanying leaflet with this schedule or see the list posted outside the Secretary's Office)*

SWPA 2023 CHAMPIONSHIP QUALIFIERS

Class 310 Novice Working Hunter Pony. All Types. Not Exceeding 122cms. Stallion, Mare or Gelding. Four years old and over. Mountain & Moorland Ponies MUST be registered with their respective Breed Society Stud Books. Riders any age. *(See rules for Ridden Stallions)*

Class 311 Novice Working Hunter Pony. All Types. Exceeding 122cms, but not Exceeding 133cms. Stallion, Mare or Gelding. Four years old and over. Mountain & Moorland Ponies MUST be registered with their respective Breed Society Stud Books. Riders any age. *(See rules for Ridden Stallions)*

Class 312 Novice Working Hunter Pony. All Types. Exceeding 133cms, but not Exceeding 143cms. Stallion, Mare or Gelding. Four years old and over. Mountain & Moorland Ponies MUST be registered with their respective Breed Society Stud Books. Riders any age. *(See rules for Ridden Stallions)*

Class 313 Novice Working Hunter Pony. All Types. Exceeding 143cms. Stallion, Mare or Gelding. Four years old and over. Mountain & Moorland Ponies MUST be registered with their respective Breed Society Stud Books. Riders any age. *(See rules for Ridden Stallions)*

The two highest placed exhibits not already qualified in classes 310 – 313 will qualify for the respective 2023 SWPA Championship Classes

NOVICE WORKING HUNTER CHAMPIONSHIP (ch56):

1st & 2nd placed exhibits from classes 310 – 313 to compete.

CHAMPION & RESERVE to go forward to the SWPA Festivals Working Hunter Championship during the Friday Evening Performance

MINI WORKING HUNTER CLASSES

SWPA 2023 CHAMPIONSHIP QUALIFIERS

Class 314 Lead Rein WHP. Mare or Gelding. Four years old and over not exceeding 122cms. Mountain & Moorland ponies must be registered with their respective Pure Breed Society Stud Books. Riders not to have attained their 9th birthday before 1st January in the current year. Riders not to have competed off the Lead Rein in ANY WHP classes before 1st January in the current year. To be shown in a SNAFFLE BRIDLE. The Lead Rein to be attached to the noseband only, and held in the Leader's outside hand.

Class 315 First Ridden WHP. Mare or Gelding. Four years old and over not exceeding 122cms. Mountain & Moorland ponies must be registered with their respective Pure Breed Society Stud Books. Riders not to have attained their 10th birthday before 1st January in the current year. Riders not to have competed in ANY WHP classes with jumps exceeding 1ft 9inches before 1st January in the current year. To be shown in a SNAFFLE BRIDLE.

The three highest placed exhibits not already qualified in classes 314 – 315 will qualify for the respective 2023 SWPA Championship Classes

MINI WORKING HUNTER CHAMPIONSHIP (ch57):

1st & 2nd placed exhibits from classes 314 – 315 to compete.

CHAMPION & RESERVE to go forward to the SWPA Festivals Working Hunter Championship during the Friday Evening Performance

South West Pony Association

SUPREME IN-HAND & SUPREME RIDDEN COMPETITIONS

NOW RENAMED TO

SWPA WYNSAND IN-HAND FINAL &

SWPA WYNSAND RIDDEN FINAL

QUALIFICATION WILL BE VIA SELECTED SWPA

AFFILIATED SHOWS

& THURSDAY & FRIDAY OF THIS SHOW

South West Pony Association's

SWPA Pondarosa Stud Family Showing Series

This competition is for owners / competitors who genuinely do the work themselves from home.

All we ask is that you enter in the genuine spirit of the competition and that you are entering an equine not to have been produced professionally by another person in the show ring in the category entered in the past two years.

The equine MUST be ridden or shown by a member of the family.

We may ask to see proof of ownership or lease/loan papers to prove this, and will sanction anyone found to be abusing this rule.

SWPA PONDAROSA STUD FAMILY SHOWING SERIES CLASSES 351 - 390

PLEASE NOTE: You do not need to be registered with SWPA to enter classes 351 – 390

IN-HAND SECTION

Class 351 In-Hand Pony. Any Type (exc M&M). Youngstock. *(Special Rosette to Best Yearling)*

Class 352 In-Hand Pony. Any Type (exc M&M). Four & over. *(Special Rosette to Best Youngstock)*

Class 353 In-Hand Horse. Any type exceeding 148cms. Youngstock. *(Special Rosette to Best Yearling)*

Class 354 In-Hand Horse. Any type exceeding 148cms. Four & over. *(Special Rosette to Best Youngstock)*

Class 355 In-Hand Coloured Horse/Pony. Youngstock. *(Special Rosette to Best Yearling)*

Class 356 In-Hand Coloured Horse/Pony. Four & over. *(Special Rosette to Best Youngstock)*

M&M Small Breeds must be registered in the Pure Breed Society Stud books of Shetland, Dartmoor, Exmoor, Welsh A & B

Class 357 In-Hand M&M Small Breeds. Youngstock. *(Special Rosette to Best Yearling)*

Class 358 In-Hand M&M Small Breeds. Four & over. *(Special Rosette to Best Youngstock)*

M&M Large Breeds must be registered in the Pure Breed Society Stud books of New Forest, Connemara, Dales, Fell, Highland, Welsh C & D

Class 359 In-Hand M&M Large Breeds. Youngstock. *(Special Rosette to Best Yearling)*

Class 360 In-Hand M&M Large Breeds. Four & over. *(Special Rosette to Best Youngstock)*

Class 361 In-Hand Veteran. Any type, Fifteen years old & over

Special Rosette to Oldest Veteran in class 361 Kindly Donated by Lorna Hewitt

IN-HAND CHAMPIONSHIP *(ch60):*

1st & 2nd placed exhibits from classes 351 – 361 to compete.

Champion & Reserve to go forward to the Family Showing Series Championship held during the 'Evening Performance'

MINI RIDDEN SECTION

Class 370 Leading Rein Open Show Pony & Show Hunter Pony. Mare or Gelding. Four years old and over, not exceeding 122cms.

Riders not to have attained their 9th birthday before 1st January in the current year.

To be led by an attendant, and shown in a SNAFFLE BRIDLE, the Lead Rein to be attached to the noseband only, and held in the Leader's outside hand.

Class 371 First Ridden Open Show Pony & Show Hunter Pony. Mare or Gelding. Four years old and over, not exceeding 122cms.

Riders not to have attained their 10th birthday before 1st January in the current year. To be shown in a SNAFFLE BRIDLE.

Class 372 Mountain & Moorland Lead Rein. Open to registered Shetland, Exmoor, Dartmoor, New Forest, Welsh Section A or B. Mare or Gelding.

Four years old or over not exceeding 122cms. Riders not to have attained their 9th birthday before the 1st January in the current year.

To be led by an attendant, and shown in a SNAFFLE BRIDLE, the Lead Rein to be attached to the noseband only, and held in the Leader's outside hand.

Class 373 Mountain & Moorland First Ridden. Open to registered Shetland, Exmoor, Dartmoor, New Forest, Welsh Section A or B. Mare or Gelding.

Four years old or over not exceeding 128cms. Riders not to have attained their 12th birthday before the 1st January in the current year.

To be shown in a SNAFFLE BRIDLE.

MINI RIDDEN CHAMPIONSHIP *(ch61):*

1st & 2nd placed exhibits from classes 370 – 373 to compete.

Champion & Reserve to go forward to the Family Showing Series Championship held during the 'Evening Performance'

RIDDEN SECTION

Class 376 Ridden Show Pony/ Show Hunter Pony. Mare or Gelding. Four years old and over. Show Pony not exceeding 148cms.

Show Hunter Pony not exceeding 153cms. *(Riders to be suitable size for pony ridden)*

Class 377 Ridden Intermediate Show Riding / Show Hunter Type. Mare or Gelding. Four years old and over. Show Riding Type exceeding 146cms but not exceeding 158cms. Show Hunter Type exceeding 148cms but not exceeding 158cms. *(Riders to be suitable size for intermediate ridden)*

Class 378 Ridden Hack / Riding Horse / Hunter / Cob. Mare or Gelding. Four years old and over.

Hack not to exceed 160cms. Riding Horses/Hunter to exceed 148cms. Riders to have attained their 15th birthday before 1st January in the current year. Cobs, any height, *(Riders to be suitable size for equine ridden)*

Class 379 Ridden Competition Horse / Pony. Stallion, Mare or Gelding. Four years old and over. Riders any age. *(see rules for Ridden Stallions)*

Class 380 Ridden Coloured Horse / Pony. Stallion, Mare or Gelding. Four years old and over. Riders any age. *(see rules for Ridden Stallions)*

Class 381 Junior Rider. Any Type/Breed. Four years old and over. Rider must be 15 years and under at 1st January in the current year.

Class 382 Senior Rider. Any Type/Breed. Four years old and over. Rider must be 16 years and over at 1st January in the current year.

All exhibits in this Mountain & Moorland section MUST be registered with their respective Breed Society Stud Books

Class 383 Ridden Shetland, Exmoor, Dartmoor. Stallion, Mare or Gelding. Four years old and over. Riders any age. *(see rules for Ridden Stallions)*

Class 384 Ridden Welsh sections A & B. Stallion, Mare or Gelding. Four years old and over. Riders any age. *(see rules for Ridden Stallions)*

Class 385 Ridden New Forest, Connemara. Stallion, Mare or Gelding. Four years old and over. Riders any age. *(see rules for Ridden Stallions)*

Class 386 Ridden Dales, Fell, Highland. Stallion, Mare or Gelding. Four years old and over. Riders any age. *(see rules for Ridden Stallions)*

Class 387 Ridden Welsh sections C & D. Stallion, Mare or Gelding. Four years old and over. Riders any age. *(see rules for Ridden Stallions)*

Class 388 Ridden Veteran. Fifteen years & over. Stallion, Mare or Gelding. Four years old and over. Riders any age. *(see rules for Ridden Stallions)*

RIDDEN CHAMPIONSHIP *(ch62):*

1st & 2nd placed exhibits from classes 376 – 388 to compete.

Champion & Reserve to go forward to the Family Showing Series Championship held during the 'Evening Performance'

SWPA WALES & WEST FESTIVAL CLASSES 431 - 532

PLEASE NOTE: You do not need to be registered with SWPA to enter classes 431 - 532
If you qualify from any of the classes you will need to register to be able to enter the Championship Classes.

OPEN IN-HAND CLASSES

THESE CLASSES AND OPEN IN-HAND CHAMPIONSHIP ARE KINDLY SPONSORED BY MRS KIM GOUGH

SWPA 2023 CHAMPIONSHIP QUALIFIERS

- Class 431 Pure, Anglo & Part Bred Arab. Youngstock. Yearling, Two & Three year old. (Special Rosette to Best Yearling)
Class 432 Pure, Anglo & Part Bred Arab. Four and over. Stallion, Mare or Gelding.
Class 433 Mountain & Moorland Part Bred. Youngstock. Yearling, Two & Three year old. (Special Rosette to Best Yearling)
Class 434 Mountain & Moorland Part Bred. Four and over. Stallion, Mare or Gelding.
Class 435 Pony to make Lead Rein Pony. Youngstock. Yearling, Two and Three year old. (Special Rosette to Best Yearling)
Class 436 Pony / Horse to make Driving Type. Any age. Colt, Stallion, Filly, Mare or Gelding. (Special Rosette to Best Youngstock)
Class 437 World Breeds, inc. Moorland & Hill Bred. Any age. Colt, Stallion, Filly, Mare or Gelding. (Special Rosette to Best Youngstock)
(Excluding British Native Breeds, M&M Part Breeds, Pure, Part Bred & Anglo Arab)
Class 438 Competition Pony / Horse. Youngstock. Yearling, Two and Three year old. (Special Rosette to Best Yearling)
Class 439 Competition Pony / Horse. Four and over. Stallion, Mare or Gelding.
Note: Coloured classes to include, Skewbald, Piebald, Appaloosa, Spotted, Palomino, Dun & Silver Dapple.
Class 440 Coloured Horse/Pony. Youngstock. Yearling, Two & Three year old. (Special Rosette to Best Yearling)
Class 441 Coloured Horse/Pony. Four and over. Stallion, Mare or Gelding.
Class 442 Riding Pony. Any age. Not to exceed 148cms. (Special Rosette to Best Youngstock)
Class 443 Show Hunter Pony. Any age. Not to exceed 153cms. (Special Rosette to Best Youngstock)
The two highest placed equines not already qualified in classes 431 – 443 will qualify for the 2023 SWPA Championship Classes

OPEN IN-HAND CHAMPIONSHIP (ch66):

Kindly Sponsored by Mrs Kim Gough

1st & 2nd placed exhibits from classes 431 – 443 to compete.

CHAMPION, RESERVE & FIRST RESERVE to go forward to the SWPA Wales & West Festival In-Hand Championship during Friday Evening Performance

OPEN IN-HAND CLASSES

THESE CLASSES AND OPEN IN-HAND CHAMPIONSHIP ARE KINDLY SPONSORED BY MR & MRS ROBERTS

SWPA 2023 CHAMPIONSHIP QUALIFIERS

- Class 444 Riding Horse / Hack. Any age. Riding Horse to exceed 148cms. Hack not to exceed 160cms.
(Special Rosette to Best Youngstock)
Class 445 Hunter Type. Any age. To exceed 148cms. (Special Rosette to Best Youngstock)
Class 446 Pre-Veteran Horse / Pony. Fifteen to Nineteen years old.
Class 447 Veteran Horse / Pony. Twenty years old and over.
Special Rosette to Oldest Veteran in class 447 Kindly Donated by Lorna Hewitt
Class 448 X Race Horse. Four and over. Stallion, Mare or Gelding. Must have competed in an official race run under Jockey Club Rules.
Class 449 Miniature Horse. Any age. (excluding Shetlands) Must be registered with their respective Miniature Horse Society.
(Special Rosette to Best Youngstock)
Class 450 Show Cob. Any age. (Special Rosette to Best Youngstock)
Class 451 Traditional Cob Type. Youngstock. (Unplaited). Yearling, Two & Three year old. (Special Rosette to Best Yearling)
Class 452 Traditional Cob Type. Four and over. (Unplaited). Stallion, Mare or Gelding.
Class 453 Gelding. Any age. (exc. M&M) (Special Rosette to Best Youngstock)
Class 454 Filly or Mare. Any age. (exc. M&M) (Special Rosette to Best Youngstock)
Class 455 Colt or Stallion. Any age. (exc. M&M) (Special Rosette to Best Youngstock)
Class 456 Owner Bred. (exc. M&M). Any age. (Special Rosette to Best Yearling & Best Youngstock)
The two highest placed equines not already qualified in classes 444 – 456 will qualify for the 2023 SWPA Championship Classes

OPEN IN-HAND CHAMPIONSHIP (ch67):

Kindly Sponsored by Mr & Mrs Roberts

1st & 2nd placed exhibits from classes 444 – 456 to compete.

CHAMPION, RESERVE & FIRST RESERVE to go forward to the SWPA Wales & West Festival In-Hand Championship during Friday Evening Performance

Don't Forget !!

**FUN CLASSES ON BOTH FRIDAY AND SATURDAY
CLASSES 535 – 539 ON FRIDAY**

CLASSES 650 – 653 ON SATURDAY

Please support these classes

MOUNTAIN & MOORLAND IN-HAND CLASSES

THESE CLASSES AND MOUNTAIN & MOORLAND IN-HAND CHAMPIONSHIP ARE KINDLY SPONSORED BY ROSEVALLEY EQUINE

SWPA 2023 CHAMPIONSHIP QUALIFIERS

All ponies in this section **MUST** be registered with their respective Pure Breed Societies.

Class 460 Welsh sections A & B. Youngstock. Yearling, Two and Three year old. (*Special Rosette to Best Yearling*)

Class 461 Welsh sections A & B. Four and over. Stallion, Mare or Gelding.

Class 462 Welsh sections C & D. Youngstock. Yearling, Two and Three year old. (*Special Rosette to Best Yearling*)

Class 463 Welsh sections C & D. Four and over. Stallion, Mare or Gelding.

Class 464 New Forest, Connemara. Any age. (*Special Rosette to Best Youngstock*)

Class 465 Dales, Fell, Highland Any age. (*Special Rosette to Best Youngstock*)

Class 466 Miniature Shetland. Any age. Not to exceed 34" at maturity. (*Special Rosette to Best Youngstock*)

Class 467 Standard Shetland, Exmoor, Dartmoor. Youngstock. Yearling, Two and Three year old. (*Special Rosette to Best Yearling*)

Class 468 Standard Shetland, Exmoor, Dartmoor. Four and over. Stallion, Mare or Gelding.

Special Rosette to Highest Placed Standard Shetland Gelding in class 468 Kindly Donated by Andrea Dymott

Class 469 Mountain & Moorland Filly / Mare. Any age. (*Special Rosette to Best Youngstock*)

Class 470 Mountain & Moorland Gelding. Any age. (*Special Rosette to Best Youngstock*)

Class 471 Mountain & Moorland Colt / Stallion. Any age. (*Special Rosette to Best Youngstock*)

Class 472 Owner Bred. M&M only. Any age. (*Special Rosette to Best Youngstock*)

The two highest placed equines not already qualified in classes 460 – 472 will qualify for the 2023 SWPA Championship Classes

MOUNTAIN & MOORLAND IN-HAND CHAMPIONSHIP (ch68):

Kindly Sponsored by Rosevalley Equine

1st & 2nd placed exhibits from classes 460– 472 to compete.

CHAMPION, RESERVE & FIRST RESERVE to go forward to the SWPA Wales & West Festival In-Hand Championship during Friday Evening Performance

YOUNG HANDLER CLASSES

SWPA 2023 CHAMPIONSHIP QUALIFIERS

MARES or GELDINGS ONLY. **NO STALLIONS or COLTS.**

Class 475 Young Handler, 4 – 8 years. Handlers to have attained their 4th birthday, but not to have attained their 9th birthday before 1st January in the current year.

Class 476 Young Handler, 9 – 13 years. Handlers to have attained their 9th birthday, but not to have attained their 14th birthday before 1st January in the current year.

Class 477 Young Handler, 14 – 18 years. Handlers to have attained their 14th birthday, but not to have attained their 19th birthday before 1st January in the current year.

The two highest placed Handlers not already qualified in classes 475 – 477 will qualify for the respective 2023 SWPA Championship Classes

YOUNG HANDLER CHAMPIONSHIP (ch69):

1st & 2nd placed exhibitors from classes 475 – 477 to compete.

NOVICE RIDDEN CLASSES

THESE CLASSES AND NOVICE RIDDEN CHAMPIONSHIP ARE KINDLY SPONSORED BY CHRIS POWELL – HIRYNYDD STUD

NOVICE RIDDEN CLASSES 480 – 484. Ponies not to have been placed first in ANY ridden class before 1st January in the current year.

SNAFFLE BRIDLES ONLY

SWPA 2023 CHAMPIONSHIP QUALIFIERS

All ponies in this section **MUST** be registered with their respective Pure Breed Societies.

Class 480 Novice Ridden M&M Small Breeds. Stallion, Mare or Gelding. Four years old and over. Registered in the Pure Breed Society Stud books of Shetland, Dartmoor, Exmoor, Welsh A & B. Riders any age. (*see rules for Ridden Stallions*)
To be shown in a SNAFFLE BRIDLE.

Class 481 Novice Ridden M&M Large Breeds. Stallion, Mare or Gelding. Four years old and over. Registered in the Pure Breed Society Stud books of New Forest, Connemara, Dales, Fell, Highland, Welsh C & D. Riders any age. (*see rules for Ridden Stallions*)
To be shown in a SNAFFLE BRIDLE.

Class 482 Novice Ridden Riding Pony / Show Hunter Pony. Stallion, Mare or Gelding. Four years old and over, not exceeding 153cms. (*Riders to be suitable size for pony ridden*)
To be shown in a SNAFFLE BRIDLE. (*See Rules for Ridden Stallions*)

Class 483 Novice Ridden Intermediate. Mare or Gelding. Four years old and over, exceeding 146cms but not exceeding 158cms. (*Riders to be suitable size for intermediate ridden*)
To be shown in a SNAFFLE BRIDLE.

Class 484 Novice Ridden Hack / Riding Horse / Hunter / Cob. Mare or Gelding. Four years old and over.
Hack not to exceed 160cms. Riding Horses/Hunter to exceed 148cms. Riders to have attained their 15th birthday before 1st January in the current year. Cobs, any height, (*Riders to be suitable size for equine ridden*) To be shown in a SNAFFLE BRIDLE.

The two highest placed exhibits not already qualified in classes 480 – 484 will qualify for the respective 2023 SWPA Championship Classes.

NOVICE RIDDEN CHAMPIONSHIP (ch70):

Kindly Sponsored by Chris Powell – Hiryndd Stud

1st & 2nd placed exhibits from classes 480 – 484 to compete.

CHAMPION &, RESERVE to go forward to the SWPA Wales & West Festival Ridden Championship during the Friday Evening Performance

ALL PRIZE MONIES MUST BE COLLECTED AT THE SHOW

OPEN RIDDEN CLASSES

SWPA 2023 CHAMPIONSHIP QUALIFIERS

- Class 485 Ridden Show Pony / Show Hunter Pony.** Mare or Gelding. Four years old and over.
Show Pony not exceeding 148cms. Show Hunter Pony not exceeding 153cms.
(Riders to be suitable size for pony ridden)
- Class 486 Ridden Intermediate SRT & SHT.** Mare or Gelding. Four years old and over, exceeding 146cms, but not exceeding 158cms.
(Riders to be suitable size for intermediate ridden)
- Class 487 Ridden Part Bred Mountain & Moorland.** Stallion, Mare or Gelding. Four years old and over.
Riders any age. (see rules for Ridden Stallions)
- Class 488 Ridden Pure, Part Bred or Anglo Arab.** Stallion, Mare or Gelding. Four years old and over.
Riders any age. (see rules for Ridden Stallions)
- Class 489 Ridden Competition Pony.** Not exceeding 148cms, (excluding M&M). Stallion, Mare or Gelding. Four years old and over.
(see rules for Ridden Stallions)
- Class 490 Ridden Competition Horse.** Exceeding 148cms, (excluding M&M). Stallion, Mare or Gelding. Four years old and over.
(see rules for Ridden Stallions)
- Class 491 Ridden Competition Mountain & Moorland.** Stallion, Mare or Gelding, Four years old and over, registered with their respective Breed Society Stud Books. (see rules for Ridden Stallions)
- Class 492 Junior Ridden Open. (exc M&M).** Mare or Gelding. Four years old and over.
Riders not to have attained their 14th birthday n/e 148cms or 18th birthday exc 148cms before 1st January in the current year.
- Class 493 Ridden Riding Horse / Hack.** Mare or Gelding. Four years old and over. Riding Horse exceeding 148cms. Hack not to exceed 160cms.
Riders of Riding Horses to have attained their 15th birthday by 1st January in the current year.
- Class 494 Ridden Light/Middle/Heavyweight Hunter.** Mare or Gelding. Four years old and over.
Riders to have attained their 16th birthday by 1st January in the current year.
- Class 495 Ridden Open Light/Heavyweight Cob.** Mare or Gelding. Four years old and over. *This class includes Maxi Cobs*
(Riders to be suitable size for equine ridden)
- Class 496 Ridden Traditional Cob.** (Unplaited) Stallion, Mare or Gelding. Four years old and over.
Riders any age. (see rules for Ridden Stallions)
- Class 497 Ridden X Race Horse.** Stallion, Mare or Gelding. Four years and over. The equine MUST have raced either on the flat, over jumps or point-to-point. To be judged on the suitability to compete in all disciplines.
Riders to have attained their 15th birthday before 1st January in the current year. (See Rules for Ridden Stallions)
- Note: Coloured class to include, Skewbald, Piebald, Appaloosa, Spotted, Palomino, Dun & Silver Dapple.*
- Class 498 Ridden Coloured Pony.** Not exceeding 148cms. Stallion, Mare or Gelding. Four years old and over.
Riders any age. (see rules for Ridden Stallions)
- Class 499 Ridden Coloured Horse.** Exceeding 148cms. Stallion, Mare or Gelding. Four years old and over.
Riders any age. (see rules for Ridden Stallions)
- Class 500 Ridden World Breeds inc. Moorland & Hill Bred.** (Excluding British Native Breeds, M&M Part Breds, Pure, Part Bred & Anglo Arabs)
Stallion, Mare or Gelding. Four years old and over. Riders any age. (see rules for Ridden Stallions)
- Class 501 Ridden Pre-Veteran.** Fifteen to Nineteen years old. Stallion, Mare or Gelding. Riders any age. (see rules for Ridden Stallions)
- Class 502 Ridden Veteran.** Twenty years old and over. Stallion, Mare or Gelding. Riders any age. (see rules for Ridden Stallions)

The two highest placed equines not already qualified in classes 485 – 502 will qualify for the respective 2023 SWPA Championship Classes

OPEN RIDDEN CHAMPIONSHIP (ch71):

1st & 2nd placed exhibits from classes 485 – 502 to compete.

CHAMPION & RESERVE to go forward to the SWPA Wales & West Festival Ridden Championship during the Friday Evening Performance

GWENT AREA WELSH PONY & COB ASSOCIATION MEMBERS

**THE FIRST THREE PLACES IN THE FOLLOWING CLASSES WILL COUNT
TOWARDS THE GWENT AREA WPCA POINTS SCHEME**

CLASSES: 53-56, 63, 66, 233-236, 266-267, 384, 387, 460-463, 518-519

MINI RIDDEN CLASSES

**THESE CLASSES AND MINI RIDDEN CHAMPIONSHIP
ARE KINDLY SPONSORED BY CATE & MARK SHEEN**

SWPA 2022 CHAMPIONSHIP QUALIFIERS

- Class 505 Novice Lead Rein. Pony NOT to have been placed first in any Lead Rein class before 1st January in the current year.**
Any type. Mare or Gelding. Four years old and over, not exceeding 122cms.
(Mountain & Moorland ponies must be registered in their respective Pure Breed Society Stud Books)
Riders not to have attained their, 7th birthday if riding Show/Riding type pony, 8th birthday if riding Show Hunter type pony or 9th birthday if riding an M&M type pony, before 1st January in the current year.
To be shown in a SNAFFLE BRIDLE. The Lead Rein to be attached to the noseband only, and held in the Leader's outside hand.
- Class 506 Novice First Ridden. Pony NOT to have been placed first in any First Ridden class before 1st January in the current year.**
Any type. Mare or Gelding. Four years old and over, not exceeding 122cms.
(Mountain & Moorland ponies must be registered in their respective Pure Breed Society Stud Books)
Riders not to have attained their, 10th birthday if riding Show/Riding or Show Hunter type pony or 12th birthday if riding an M&M type pony before the 1st January in the current year. To be shown in a SNAFFLE BRIDLE.

- Class 507 Leading Rein Open Show Pony & Show Hunter Pony.** Mare or Gelding. Four years old and over, not exceeding 122cms. Riders not to have attained their 9th birthday before 1st January in the current year. To be led by an attendant, and shown in a SNAFFLE BRIDLE, the Lead Rein to be attached to the noseband only, and held in the Leader's outside hand.
- Class 508 First Ridden Open Show Pony & Show Hunter Pony.** Mare or Gelding. Four years old and over, not exceeding 122cms. Riders not to have attained their 10th birthday before 1st January in the current year. To be shown in a SNAFFLE BRIDLE.
- Class 509 M&M Leading Rein.** Mare or Gelding. Four years old and over, not exceeding 122cms, registered in the respective Pure Breed Society Stud Books of Shetland, Dartmoor, Exmoor, New Forest, Welsh A and B. Riders not to have attained their 9th birthday before 1st January in the current year. To be led by an attendant and shown in a SNAFFLE BRIDLE, the Lead Rein to be attached to the noseband only, and held in the Leader's outside hand.
- Class 510 M&M First Ridden.** Mare or Gelding. Four years old and over not exceeding 128cms, registered in the respective Pure Breed Society Stud Books of Shetland, Dartmoor, Exmoor, New Forest, Welsh A and B. Riders not to have attained their 12th birthday before 1st January in the current year. To be shown in a SNAFFLE BRIDLE.

The two highest placed equines not already qualified in classes 505 – 510 will qualify for the respective 2023 SWPA Championship Classes

MINI RIDDEN CHAMPIONSHIP (ch72):

Kindly Sponsored by Cate & Mark Sheen

1st & 2nd placed ponies from classes 505– 510 to compete.

CHAMPION & RESERVE to go forward to the SWPA Wales & West Festival Ridden Championship during the Friday Evening Performance

MOUNTAIN & MOORLAND RIDDEN CLASSES

SWPA 2023 CHAMPIONSHIP QUALIFIERS

All ponies in this section MUST be registered with their respective Pure Breed Societies.

- Class 515 Junior M&M Small Breeds Ridden.** Mare or Gelding. Four years old and over, registered in their respective Pure Breed Society Stud books of Shetland, Exmoor, Dartmoor, Welsh A & B. Riders not to have attained their 14th birthday before 1st January in the current year.
- Class 516 Junior M&M Large Breeds Ridden.** Mare or Gelding. Four years old and over, registered in their respective Pure Breed Society Stud books of New Forest, Connemara, Dales, Fell, High, Welsh C & D. Riders not to have attained their 18th birthday before 1st January in the current year.
- Class 517 Ridden Shetland, Exmoor, Dartmoor.** Stallion, Mare or Gelding. Four years old and over. Rider any age. *(See rules for Ridden Stallions)*
- Class 518 Ridden Welsh sections A & B.** Stallion, Mare or Gelding. Four years old and over. Rider any age. *(See rules for Ridden Stallions)*
- Class 519 Ridden Welsh sections C & D.** Stallion, Mare or Gelding. Four years old and over. Rider any age. *(See rules for Ridden Stallions)*
- Class 520 Ridden New Forest, Connemara.** Stallion, Mare or Gelding. Four years old and over. Rider any age. *(See rules for Ridden Stallions)*
- Class 521 Ridden Dales, Fell, Highland.** Stallion, Mare or Gelding. Four years old and over. Rider any age. *(See rules for Ridden Stallions)*

The two highest placed equines not already qualified in classes 515 – 521 will qualify for the respective 2023 SWPA Championship Classes

MOUNTAIN & MOORLAND RIDDEN CHAMPIONSHIP (ch73):

1st & 2nd placed exhibits from classes 515 – 521 to compete.

CHAMPION & RESERVE to go forward to the SWPA Wales & West Festival Ridden Championship during the Friday Evening Performance

WORKING HUNTER CLASSES

NOVICE WORKING HUNTER CLASSES

CLASSES 525 – 528 AND NOVICE WORKING HUNTER CHAMPIONSHIP ARE KINDLY SPONSORED BY CHARLIE HANDLEY IN MEMORY OF WINTON RUSTLER

NOVICE RULES: *Equines NOT to have been placed first in ANY Working Hunter Class before 1st January in the current year.*

PLEASE NOTE: *SNAFFLE BRIDLES ONLY will be permitted in ALL Novice Working Hunter classes. (Please see list of permitted bits listed in the accompanying leaflet with this schedule or see the list posted outside the Secretary's Office)*

SWPA 2023 CHAMPIONSHIP QUALIFIERS

- Class 525 Novice Working Hunter Pony. All Types. Not Exceeding 122cms.** Stallion, Mare or Gelding. Four years old and over. Mountain & Moorland Ponies MUST be registered with their respective Breed Society Stud Books. Riders any age. *(See rules for Ridden Stallions)*
- Class 526 Novice Working Hunter Pony. All Types. Exceeding 122cms, but not Exceeding 133cms.** Stallion, Mare or Gelding. Four years old and over. Mountain & Moorland Ponies MUST be registered with their respective Breed Society Stud Books. Riders any age. *(See rules for Ridden Stallions)*
- Class 527 Novice Working Hunter Pony. All Types. Exceeding 133cms, but not Exceeding 143cms.** Stallion, Mare or Gelding. Four years old and over. Mountain & Moorland Ponies MUST be registered with their respective Breed Society Stud Books. Riders any age. *(See rules for Ridden Stallions)*
- Class 528 Novice Working Hunter Pony. All Types. Exceeding 143cms.** Stallion, Mare or Gelding. Four years old and over. Mountain & Moorland Ponies MUST be registered with their respective Breed Society Stud Books. Riders any age. *(See rules for Ridden Stallions)*

The two highest placed exhibits not already qualified in classes 525 – 528 will qualify for the respective 2023 SWPA Championship Classes

NOVICE WORKING HUNTER CHAMPIONSHIP (ch75):

Kindly Sponsored by Charlie Handley in Memory of Winton Rustler

1st & 2nd placed exhibits from classes 525 – 528 to compete.

CHAMPION & RESERVE to go forward to the SWPA Festivals Working Hunter Championship during the Friday Evening Performance

OPEN WORKING HUNTER CLASSES

CLASSES 529 – 532 AND OPEN WORKING HUNTER CHAMPIONSHIP ARE KINDLY SPONSORED BY CHARLIE HANDLEY IN MEMORY OF WINTON RUSTLER

SWPA 2023 CHAMPIONSHIP QUALIFIERS

- Class 529 Open Working Hunter Pony. All Types. Exceeding 143cms.** Stallion, Mare or Gelding. Four years old and over. Mountain & Moorland Ponies MUST be registered with their respective Breed Society Stud Books. Riders any age. *(See rules for Ridden Stallions)*
- Class 530 Open Working Hunter Pony. All Types. Exceeding 133cms, but not Exceeding 143cms.** Stallion, Mare or Gelding. Four years old and over. Mountain & Moorland Ponies MUST be registered with their respective Breed Society Stud Books. Riders any age. *(See rules for Ridden Stallions)*
- Class 531 Open Working Hunter Pony. All Types. Exceeding 122cms, but not Exceeding 133cms.** Stallion, Mare or Gelding. Four years old and over. Mountain & Moorland Ponies MUST be registered with their respective Breed Society Stud Books. Riders any age. *(See rules for Ridden Stallions)*
- Class 532 Open Working Hunter Pony. All Types. Not Exceeding 122cms.** Stallion, Mare or Gelding. Four years old and over. Mountain & Moorland Ponies MUST be registered with their respective Breed Society Stud Books. Riders any age. *(See rules for Ridden Stallions)*

The two highest placed exhibits not already qualified in classes 529 – 532 will qualify for the respective 2023 SWPA Championship Classes

OPEN WORKING HUNTER CHAMPIONSHIP (ch76):

Kindly Sponsored by Charlie Handley in Memory of Winton Rustler

1st & 2nd placed exhibits from classes 529 – 532 to compete.

CHAMPION & RESERVE to go forward to the SWPA Festivals Working Hunter Championship during the Friday Evening Performance

FRIDAY FUN CLASSES

Classes 535 – 539 are designed for riders that don't normally attend large shows, and for beginners of all ages. There are NO qualifiers so NO pressure. Please enter the classes in the spirit in which they are designed – for Fun, Learning & Just Taking Part.

THESE CLASSES AND CHAMPIONSHIP ARE KINDLY SPONSORED BY THE DRAPER FAMILY

- Class 535 Lead Rein. Any Type.** Riders not to have reached their 12th birthday before the date of the show. Riders to be suitable size for the pony they are riding. Snaffle Bridles ONLY
- Class 536 First Ridden. Any Type.** Riders not to have reached their 12th birthday before the date of the show. There is no requirement to canter. Riders to be suitable size for the pony they are riding. Snaffle Bridles ONLY
May be accompanied in the ring, but the child must be seen to be riding the pony unaided.
- Class 537 Best Combination. Any Type.** Riders not to have attained their 17th birthday before the date of the show. Riders must be suitable size for pony/horse they are riding.
- Class 538 Beginners Walk & Trot. Riders Three – Twelve Years.** Any type. Four years old and over. Riders to have attained their 3rd birthday but not to have attained their 13th birthday before the date of the show.
- Class 539 Family Horse / Pony Ridden.** Mare or Gelding. Four years old and over. Any Height. To be ridden by two riders. There must be 10 years difference in ages between both riders. To be judged on Manners and Suitability for any member of the family to ride.

FUN CLASSES CHAMPIONSHIP (ch37):

Kindly Sponsored by The Draper Family

1st & 2nd placed exhibits from classes 535 – 539 to compete for the Fun Championship Trophy.

Kindly donated by The Draper Family



Showing Scene

Showing Management Made Easy

Showing Scene is a revolutionary show management system for equine events.

As a show organiser, build and manage your equine events at the click of a button, saving you time and effort - with no more forms to process. Class results are real-time allowing you to go paperless in the rings.

For competitors, we've made it very simple to enter online, with no need to re-enter details, card payments even available on show days and a ring side feature to see what's on in each ring. For more information contact us at www.showingscene.com

MEDWIN'S CHALLENGE CLASSES 550 - 558

KINDLY SPONSORED BY TEAM REYNOLDS

MEDWIN'S CHALLENGE CLASSES

These classes are open to all exhibitors, you do NOT have to be a registered SWPA exhibitor to enter. Please read the freestyle movements required as these will be marked as shown. The Broad family hope you enjoy this competition and wish you all the very best of success. Mountain & Moorland Ponies MUST be registered with their respective Breed Society Stud Books.

Please Note: Classes 550 - 556 will be marked as follows: -

Phase One: Performance & Freestyle Show 60 marks.

The individual Freestyle Show to include, Halt, Walk on a long rein, Ordinary trot serpentine, Extended trot on the diagonal, Canter serpentine with change of lead, Extended canter on the diagonal. Not to exceed 2 minutes. Competitors will be marked out of 10 points for each phase.

Phase Two: Conformation 40 marks.

Class 550 Ridden Mountain & Moorland Small Breeds. Stallion, Mare or Gelding. Four years old and over. Rider any age. (*see rules for Ridden Stallions*)

Class 551 Ridden Mountain & Moorland Large Breeds. Stallion, Mare or Gelding. Four years old and over. Rider any age. (*see rules for Ridden Stallions*)

Class 552 Junior Mountain & Moorland Ridden. Mare or Gelding. Four years old and over. Riders suitable age/size for pony they ride.

Class 553 Open Ridden Pony. Mare or Gelding. Not exceeding 148cms. Four years old and over. Riders suitable age/size for pony they ride.

Class 554 Open Ridden Horse/Hunter/Cob. Mare or Gelding. Exceeding 148cms. Four years old and over. Riders any age.

Class 555 Junior Ridden Open. (exc M&M). Mare or Gelding. Four years old and over. Four years old and over. Riders suitable age/size for pony they ride. Riders not to have attained their 14th birthday n/e 138cms or 18th birthday exc 138cms before 1st January in the current year.

Class 556 Senior Riders, 35 years old and over. Horse/Pony, Any Type. Stallion, Mare or Gelding. Four years old and over.

Class 557 Ridden Lead Rein. Any type. Mare or Gelding. Four years old & over. Riders not to have attained their 10th birthday before 1st January in the current year. To be led by an attendant, and shown in a SNAFFLE BRIDLE, the Lead Rein to be attached to the noseband only, and held in the Leader's outside hand.

Marked as follows:

Phase One: Performance & Freestyle Show 60 marks.

The individual Freestyle Show to include, Halt, Walk on a long rein, Ordinary trot serpentine, Extended trot on the diagonal.

Not to exceed 2 minutes.

Competitors will be marked out of 15 points for each phase.

Phase Two: Conformation 40 marks.

Class 558 First Ridden. Any type. Mare or Gelding. Riders not to have attained their 12th birthday before 1st January in the current year. SNAFFLE BRIDLE ONLY

Marked as follows:

Phase One: Performance & Freestyle Show 60 marks.

The individual Freestyle Show to include, Halt, Walk on a long rein, Ordinary trot serpentine, Extended trot on the diagonal, Canter with change of lead, Extended canter on the diagonal. Not to exceed 2 minutes. Competitors will be marked out of 10 points for each phase.

Phase Two: Conformation 40 marks.

MEDWIN'S CHALLENGE CHAMPIONSHIP (ch78):

Kindly Sponsored by Team Reynolds

1st & 2nd placed exhibits from classes 550 - 558 to compete.

No results will be given out at this point. The TEN highest placed equines will be invited to the presentation of awards in the Superflex Arena during the 'Evening Performance' on Friday.

'Evening Dress' code for the final judging of the Championship.



*SWPA Founder
Medwin Broad
1946 - 2020*



Veteran Horse Society – AREA QUALIFIER 2023

First round qualifier for the Veteran Horse Society Supreme Final:

VETERAN HORSE OF THE YEAR 2023

Kindly Sponsored by Allen & Page.

Open to members and non-members. All competitors and grooms must adhere to VHS Rules in all circumstances. Failure to do so may result in immediate disqualification.

VHS Regional Final qualification. All competitors placed 1st to 4th in each Area Qualifier class will qualify for the corresponding class at VHS Regional Finals. Members must carry their card in the ring at all times and have their showing card signed by the judge as proof of qualification. Non-members will receive a red qualification card which can be exchanged for signed showing card when applying for VHS membership. It is the competitors responsibility to present their Showing card to the judge.

Regional Finals are open to members only.

All competitors are eligible to enter open classes at the National Veteran Championships, to be held at Arena UK Lincolnshire on 29th September – 1st October 2023. No qualification or membership necessary. See VHS website for schedule.

For further information please visit the VHS website www.veteran-horse-society.co.uk or telephone the VHS Show Office on 01239 881300 or 07789 514004.

Judge: Mr J Askins

VETERAN HORSE SOCIETY AREA QUALIFIER 2023

No Fools, Spurs, Galloping, or wearing of Face/Body Jewellery permitted. Minimum age of Handlers for In-Hand classes is 9years. Handlers for Stallions and Ridden Competitors MUST be over 16 years of age. Competitors can NOT enter the ring once the command of trot has been given. All competitors should acquaint themselves with the Veteran Horse Society (VHS) Rules before entering, which can be found at www.veteran-horse-society.co.uk

VHS1 In-Hand Diamond Veteran. 25 Years old and over. Open to Horses & Ponies of any breed and height.

VHS2 In-Hand Veteran. 20 – 24 Year old. Open to Horses & Ponies of any breed and height.

VHS3 In-Hand Pre-Veteran. 15 – 19 Year old. Open to Horses & Ponies of any breed and height.

VHS4 Ridden Diamond Veteran. 25 Years old and over. Open to Horses & Ponies of any breed and height.

VHS5 Ridden Veteran. 20 – 24 Year old. Open to Horses & Ponies of any breed and height.

VHS6 Ridden Pre-Veteran. 15 – 19 Year old. Open to Horses & Ponies of any breed and height.

All competitors placed 1st to 4th in each Area Qualifier class will qualify for the corresponding class at the VHS Regional Qualifier at this show on Saturday 02 September 2023 or at any of the VHS Regional Finals.

VHS AREA VETERAN CHAMPIONSHIP (ch50)

1st & 2nd placed exhibits from classes VHS1 – VHS6 to compete.

Veteran Horse Society – REGIONAL QUALIFIER 2023

Regional qualifier for the Veteran Horse Society Supreme Final:

VETERAN HORSE OF THE YEAR 2023

Kindly Sponsored by Allen & Page.

Judge: Miss C Knox

VETERAN HORSE SOCIETY REGIONAL FINAL 2023

All competitors and grooms must adhere to VHS 2023 Rules in all circumstances. Failure to do so may result in immediate disqualification. Only fully qualified Members holding a current VHS membership card and a VHS showing card with a valid qualification signature may enter. Both cards must be carried in the ring and produced on request – no exceptions will be made.

VHS Supreme Final qualification. Competitors placed 1st and 2nd in each class will qualify for the corresponding class at the VHS Supreme Final, to be held at the National Veteran Championships, Arena UK, Lincolnshire, 29th September until 1st October 2023.

If the competitor has already qualified or does not wish to attend, they must refuse the qualification and pass it down the line on the day. Hand your show card to the judge for signing.

VHS M&M Supreme Final qualification. *Only given at the judge's discretion.* The highest placed M&M in each class will qualify for the VHS M&M Supreme Final at the National Veteran Championships. Registered Breeds only.

For further information on qualification or membership please visit the VHS website www.veteran-horse-society.co.uk or telephone the VHS Show Office on 01239 881300 or 07789 514004

VHS7 In-Hand Diamond Veteran. 25 Years old and over. Open to Horses & Ponies of any breed and height.
Highest placed registered M&M to qualify forward to the M&M Supreme Final - at the judge's discretion.

VHS8 In-Hand Veteran. 20 – 24 Year old. Open to Horses & Ponies of any breed and height.
Highest placed registered M&M to qualify forward to the M&M Supreme Final - at the judge's discretion.

VHS9 In-Hand Pre-Veteran. 15 – 19 Year old. Open to Horses & Ponies of any breed and height.
Highest placed registered M&M to qualify forward to the M&M Supreme Final - at the judge's discretion.

VHS10 Ridden Diamond Veteran. 25 Years old and over. Open to Horses & Ponies of any breed and height.
Highest placed registered M&M to qualify forward to the M&M Supreme Final - at the judge's discretion.

VHS11 Ridden Veteran. 20 – 24 Year old. Open to Horses & Ponies of any breed and height.
Highest placed registered M&M to qualify forward to the M&M Supreme Final - at the judge's discretion.

VHS12 Ridden Pre-Veteran. 15 – 19 Year old. Open to Horses & Ponies of any breed and height.
Highest placed registered M&M to qualify forward to the M&M Supreme Final - at the judge's discretion.

The two highest placed competitors in classes VHS7 – VHS12 will receive qualification to the VHS Supreme Final in relation to the age of the veteran.

VETERAN CHAMPIONSHIP PRELIMINARY JUDGING (VHSC)

1st & 2nd placed exhibits from classes VHS7 – VHS12 to compete.

Final judging of the championship will take place during the 'Evening Performance' on Saturday.

The Champion & Reserve Champion will qualify for the VHS Grand Final.

'Evening Dress' code for the final judging of the Championship.

SWPA POLTIMORE PLANT LTD DRESSAGE COMPETITION

CLASSES 560 - 567

PLEASE NOTE: You do not need to be registered with SWPA to enter the Dressage classes 560 - 567



***THIS COMPETITION AND ALL ROSETTES ARE KINDLY SPONSORED
BY POLTIMORE PLANT LTD***

Please Note: These classes are run under the SWPA General Showing Rules. However, Spurs will be permitted in these classes
Snaffle Bridles only for all classes.

Individual Start Times will be posted on our Facebook Page and outside the secretary's office, or contact Tracy on 07973317201 Wednesday 30 August 2023 between 6.00-7.30pm.

It is your responsibility to make sure you have the correct rider age listed when entering these classes

Exhibitors may be able to carry out their test out of the sequence listed below.

Class 560 Introductory A. Walk Trot Test (2008): Class to be split into two sections.

Section 1: For riders 16 and under before 1st January of the current year.

Section 2: For riders over 16. Combination not to have won ANY Preliminary Dressage Test. (True Novices only please)

No Lead Reins

Class 561 Prelim 2 (2016): Equines not to have won 15 or more BD points at Novice Level or above and no BE Equines at Intermediate Level or above.

Class 562 Prelim 12 (2005) (Revised collective marks 2016): Equines not to have won 15 or more BD points at Novice Level or above, and no BE Equines at Intermediate Level or above.

Class 563 Novice 24 (2010) (Revised collective marks 2016): Equines not to have more than 25 Elementary Points. Special Rosettes for the two highest placed riders 16 and under before the 1st January of the current year.

Class 564 Introductory B. Walk Trot Test (2009): Class to be split into two sections.

Section 1: For riders 16 and under before 1st January of the current year.

Section 2: For riders over 16. Combination not to have won ANY Preliminary Dressage Test. (True Novices only please)

No Lead Reins

Class 565 Prelim 7 (2002) (Revised collective marks 2016): Equines not to have won 15 or more BD points at Novice Level or above and no BE Equines at Intermediate Level or above.

Class 566 Prelim 18 (2002) (Revised collective marks 2016): This will be run as an Open Class, not included in the championship.

Extra Special Rosettes for this class plus prize money for the top three places depending on how many enter the class.

Class 567 Elementary 44 (2002) Equines not to have won more than 25 Medium Points.

DRESSAGE CHAMPIONSHIP

First placed exhibits from classes 560 sections 1&2, 561, 562, 563, 564 sections 1&2, 565 & 567 (**NOT CLASS 566**) to compete for the **SWPA Poltimore Plant Dressage Championship** during the 'Evening Performance' on Saturday

Dress Code: 'Evening Dress'

SSADL National Dressage Championship Qualifiers

Classes 561, 562, 563, 565, 566 are qualifiers for the SSADL Dressage National Finals.

Any competitor with a pony/horse aged 15 years and over with a final test score of 60% and above will qualify for the SSADL Senior Dressage National Finals. Competitors do not need to be a member of SSADL to enter the classes. Once qualified SSADL will do the rest.

SSADL will require a photocopy of the horse/pony passport (to verify the equines age) to be enclosed with the entry form, to be sent out mid-August. At the finals the tests are divided into 3 age groups: Pre-Senior 15-18yrs Senior 19-23yrs Senior Plus 24 years and over.

SWPA SHOW WITHIN A SHOW 600 - 639

SHOW WITHIN A SHOW CLASSES

These classes are Open to everyone.

You do not need to be registered with SWPA, and you do not need to qualify for these classes

IN-HAND CLASSES

Classes 600 - 612 & Championship have been kindly Sponsored by MEADMOOR STUD

Class 600 Mountain & Moorland Yearling. Colt, Filly or Gelding. Registered with their respective Breed Society Stud Books.

Class 601 Mountain & Moorland Two & Three Year old. Colt, Filly or Gelding. Registered with their respective Breed Society Stud Books.

Class 602 Mountain & Moorland Small Breeds, Four & over. Stallion, Mare or Gelding. Registered with their respective Breed Society Stud Books.

Class 603 Mountain & Moorland Large Breeds, Four and over. Stallion, Mare or Gelding. Registered with their respective Breed Society Stud Books.

Class 604 Open Horse/Pony Youngstock. (exc M&M). Any type. Colt, Filly or Gelding. Yearling, Two & Three year old.

Class 605 Open Horse/Pony Four & over. (exc M&M) Any type. Stallion, Mare or Gelding.

Note: Coloured class to include, Skewbald, Piebald, Appaloosa, Spotted, Palomino and Dun.

Class 606 Coloured, Youngstock. Any Type. Yearling, Two & Three year old.

Class 607 Coloured, Four and over. Any Type. Stallion, Mare or Gelding.

Class 608 Competition Type. Horse / Pony. Any age. Colt, Filly, Stallion, Mare or Gelding.

Class 609 Filly / Mare, Any Type. Any age. Filly or Mare.

Class 610 Colt / Stallion. Any Type. Any age. Colt or Stallion.

Class 611 Gelding, Any Type. Any age. Gelding.

Class 612 Miniature Horse / Shetland. Any age. Miniature Horses must be registered with their respective Miniature Horse Society. Miniature Shetlands must be registered with the Shetland Pony Society stud Book.

IN-HAND CHAMPIONSHIP (ch79):

Kindly Sponsored by Meadmoor Stud

1st & 2nd placed exhibits from classes 600 - 612 to compete.

CHAMPION & RESERVE to go forward to the SWPA Show within a Show Championship during the Saturday Evening Performance

MINI RIDDEN CLASSES

Classes 620 – 623 & Championship have been kindly Sponsored by Wendy Bridges

Class 620 Lead Rein Show Pony / Show Hunter Pony. Mare or Gelding. Four years old and over, not exceeding 122cms.

Riders not to have attained their 9th birthday before 1st January in the current year. To be led by an attendant, and shown in a SNAFFLE BRIDLE, the Lead Rein to be attached to the noseband only, and held in the Leader's outside hand.

Class 621 First Ridden Show Pony / Show Hunter Pony. Mare or Gelding. Four years old and over, not exceeding 122cms.

Riders not to have attained their 10th birthday before 1st January in the current year. To be shown in a SNAFFLE BRIDLE.

Class 622 M&M Leading Rein. Mare or Gelding. Four years old and over, not exceeding 122cms, registered in the respective Pure Breed Society Stud Books of Shetland, Dartmoor, Exmoor, New Forest, Welsh A and B.

Riders not to have attained their 9th birthday before 1st January in the current year. To be led by an attendant and shown in a SNAFFLE BRIDLE, the Lead Rein to be attached to the noseband only, and held in the Leader's outside hand.

Class 623 M&M First Ridden. Mare or Gelding. Four years old and over not exceeding 128cms, registered in the respective Pure Breed Society Stud Books of Shetland, Dartmoor, Exmoor, New Forest, Welsh A and B.

Riders not to have attained their 12th birthday before 1st January in the current year. To be shown in a SNAFFLE BRIDLE.

MINI RIDDEN CHAMPIONSHIP (ch80):

Kindly Sponsored by Wendy Bridges

1st & 2nd placed exhibits from classes 620 – 623 to compete.

CHAMPION & RESERVE to go forward to the SWPA Show within a Show Championship during the Saturday Evening Performance

RIDDEN CLASSES

Note: Coloured class to include, Skewbald, Piebald, Appaloosa, Spotted, Palomino and Dun.

Class 625 Ridden Coloured Pony. Not exceeding 148cms. Stallion, Mare or Gelding. Four years old and over.

Riders any age. *(see rules for Ridden Stallions)*

Class 626 Ridden Coloured Horse. Exceeding 148cms. Stallion, Mare or Gelding. Four years old and over.

Riders any age. *(see rules for Ridden Stallions)*

Class 627 Ridden Competition Pony. Not exceeding 148cms, (excluding M&M). Stallion, Mare or Gelding. Four years old and over.

(see rules for Ridden Stallions)

Class 628 Ridden Competition Horse. Exceeding 148cms, (excluding M&M). Stallion, Mare or Gelding. Four years old and over.

(see rules for Ridden Stallions)

Class 629 Ridden Veteran. Fifteen years old and over. Stallion, Mare or Gelding. Riders any age. *(see rules for Ridden Stallions)*

Class 630 Ridden X Race Horse. Stallion, Mare or Gelding. Four years and over. Must have competed in an official race run under Jockey Club Rules.

Riders to have attained their 15th birthday before 1st January in the current year. *(see rules for Ridden Stallions)*

Class 630 is kindly sponsored by Alison Lievesley

Class 631 Ridden M&M Small Breeds. Stallion, Mare or Gelding. Four years old and over, registered with their respective Breed Society Stud Books. *(see rules for Ridden Stallions)*

Class 632 Ridden M&M Large Breeds. Stallion, Mare or Gelding. Four years old and over, registered with their respective Breed Society Stud Books. *(see rules for Ridden Stallions)*

Class 632 is kindly sponsored by Munchys Café Haverfordwest

Class 633 Ridden Show Pony / Show Hunter Pony. Mare or Gelding. Four years old and over.

Show Pony not exceeding 148cms. Show Hunter Pony not exceeding 153cms.

(Riders to be suitable size for pony ridden)

Class 630 is kindly sponsored by Alison Lievesley

Class 634 Ridden Part Bred Mountain & Moorland. Stallion, Mare or Gelding. Four years old and over.

Riders any age. *(see rules for Ridden Stallions)*

Class 634 is kindly sponsored by Munchys Café Haverfordwest

Class 635 Ridden Pure, Part Bred or Anglo Arab. Stallion, Mare or Gelding. Four years old and over.

Riders any age. *(see rules for Ridden Stallions)*

Class 636 Ridden Riding Horse / Hack. Mare or Gelding. Four years old and over. Riding Horse exceeding 148cms. Hack not to exceed 160cms.

Riders of Riding Horses to have attained their 15th birthday by 1st January in the current year.

Class 637 Ridden Light/Middle/Heavyweight Hunter. Mare or Gelding. Four years old and over.

Riders to have attained their 16th birthday by 1st January in the current year.

Class 638 Ridden Open Light/Heavyweight Cob. Mare or Gelding. Four years old and over. *This class includes Maxi Cobs*

(Riders to be suitable size for equine ridden)

Class 639 Ridden Traditional Cob. (Unplaited) Stallion, Mare or Gelding. Four years old and over.

Riders any age. *(see rules for Ridden Stallions)*

RIDDEN CHAMPIONSHIP (ch81):

1st & 2nd placed exhibits from classes 625 - 639 to compete.

CHAMPION & RESERVE to go forward to the SWPA Show within a Show Championship during the Saturday Evening Performance

Don't Forget !!

FUN CLASSES ON BOTH FRIDAY AND SATURDAY

CLASSES 535 – 539 ON FRIDAY

CLASSES 650 – 653 ON SATURDAY

Please support these classes

SATURDAY FUN CLASSES

Classes 650 – 653 are designed for riders that don't normally attend large shows, and for beginners of all ages. There are NO qualifiers so NO pressure. Please enter the classes in the spirit in which they are designed – for Fun, Learning & Just Taking Part.

THESE CLASSES AND CHAMPIONSHIP ARE KINDLY SPONSORED BY THE WYNSAND STUD

Class 650 Lead Rein. Any Type. Riders not to have reached their 12th birthday before the date of the show.

Riders to be suitable size for the pony they are riding. Snaffle Bridles ONLY

Class 651 First Ridden. Any Type. Riders not to have reached their 12th birthday before the date of the show.

There is no requirement to canter. Riders to be suitable size for the pony they are riding. Snaffle Bridles ONLY

May be accompanied in the ring, but the child must be seen to be riding the pony unaided.

Class 652 Best Combination. Any Type. Riders not to have attained their 17th birthday before the date of the show.

Riders must be suitable size for pony/horse they are riding.

Class 653 Beginners Walk & Trot. Riders Three – Twelve Years. Any type. Four years old and over. Riders to have attained their 3rd birthday but not to have attained their 13th birthday before the date of the show.

FUN CLASSES CHAMPIONSHIP (ch38):

Kindly Sponsored by the Wynsands Stud

1st & 2nd placed exhibits from classes 650 – 653 to compete for the Fun Championship Trophy.

Kindly donated by the Wynsands Stud

SSADL HOME PRODUCED

**IN-HAND & RIDDEN 2023 QUALIFIERS COMPRISING OF
THE LONDON INTERNATIONAL HORSE SHOW FIRST ROUND
MEMBERS OPEN CHALLENGES, MEMBERS MOUNTAIN & MOORLAND CHALLENGES
MEMBERS LEAD REIN / FIRST RIDDEN CHALLENGES, MEMBERS FOREIGN BREEDS CHALLENGES
SENIOR OF THE YEAR CHAMPIONSHIP
NEW FOR 2023
SSADL SUPER STARS CHAMPIONSHIP**

(This series is open to members and non-members. Non-members will have 10 days to join the society on receiving a qualification card)

SSADL Home Produced Qualifiers are **OPEN** to both Members and Non-Members of SSADL.

No Spurs with exception to senior side saddle riders. No Galloping or Canter Extensions. No wearing of Face/Body Jewellery with the exception to the ear ring used by competitors with health issues.

Foals are **NOT** permitted in SSADL classes. For In-Hand classes: Minimum age of Handler is 11 years old. First Ridden ponies/riders will be asked after the initial walk round to come into the centre of the ring. First Ridden Competitors will only canter in their individual shows. Lead Rein Riders: If a strip section is required a Lead Rein Rider **MUST** stay mounted.

Stallions: Either for In-Hand or Ridden classes: Competitors **MUST** be 16 years of age or over. Competitors cannot enter the ring once the command has been given. The same Rider/Handler/Pony/Horse must stay the same from qualifier to Grand Finals, unless special circumstances should arise. Then it will be left to the discretion of the Directors and Advisory Committee to oversee this rule if required.

ALL COMPETITORS SHOULD ACQUAINT THEMSELVES WITH SSADL RULES BEFORE ENTERING. SSADL Rulebook can be found at www.seniorshowinganddressage.co.uk

SSADL1 Pre-Senior In-Hand. Pony or Horse 15 – 18 Years old

SSADL2 Senior In-Hand. Pony or Horse 19 – 23 Years old

SSADL3 Senior-Plus In-Hand. Pony or Horse 24 Years old & over

SSADL4 Pre-Senior Ridden. Pony or Horse 15 – 18 Years old

SSADL5 Senior Ridden. Pony or Horse 19 – 23 Years old

SSADL6 Senior-Plus Ridden. Pony or Horse 24 Years old & over

SSADL VETERAN CHAMPIONSHIP (ch53)

1st & 2nd placed exhibits from classes SSADL1 – SSADL6 to compete.

2023 Qualification System: SSADL Members will receive their own qualification card. This is to be signed in the ring at the time of judging/presentation. This is the members responsibility to ensure the right qualifier is signed for.

- 1) 1st to 6th in each age group will qualify for the London International Horse Show 2nd round qualifiers
- 2) The 1st & 2nd from each age section will qualify for the SSADL Members Open Challenge (Lead Rein Ponies are NOT permitted)
- 3) The two highest placed Mountain & Moorland ponies within a class will qualify for the Members Mountain & Moorland Challenge
- 4) The two highest placed Lead Rein / First Ridden ponies within a class will qualify for the Members Lead Rein / First Ridden Challenge
- 5) The two highest placed Foreign Breeds equines with a class will qualify for the Members Foreign Breeds Challenge
- 6) The winner from each class will qualify for the Senior of the Year Championship
- 7) New SSADL Super Stars Championships: To be eligible to compete in this championship a competitor **MUST** be a member of a Pony Club or Riding Club. Membership numbers required and to be put on the qualification card. A competitor **MUST** have competed in TWO events/classes at your Pony Club or Riding Club

Once a member has filled their qualification card to the relevant classes, the said card must be sent into the Office by normal post no later than the 30 August 2023. **REMEMBER TO PHOTOCOPY YOUR CARD**

NON-MEMBERS Qualification cards will be handed out in the ring to the two highest placed competitors in each section. These are for Non-Members ONLY

Qualification cards **MUST** be returned to SSADL Head Office within the 10-day period of the date of the show with a 2023 Membership Application completed and payment made. Once a qualification card and membership is sent in correctly along with payment, only then will Members be eligible for the Members Challenge Preliminary round and Challenge Finals, to be held at the SSADL National Championship Show on 9th & 10th September 2023 at Onley Grounds, Rugby, Warwickshire.

Please make a copy of your card and Do Not send recorded delivery.

For further showing information: SSADL Head Office, Suncrest, 119 High Lane, Brown Edge, Stoke on Trent, Staffordshire. ST6 8RT

Tel: 01782 503526

Email: info@seniorshowinganddressage.co.uk

www.seniorshowinganddressage.co.uk

SWPA SHOW JUMPING

Unaffiliated Jumping

These classes to be run on Thursday & Friday Mornings from 8.30am – 1.30pm

Entry Fee for all Show Jumping classes: SWPA Members £15.00 Non-Members £18.00

Horses/Ponies MUST be 5 years old and over. Riders to be suitable size for equine ridden.

Competitors will jump a single course of show jumps with the second half of the jumps timed.

Class SJ1 Show Jumping Single Phase 0.45m

Class SJ2 Show Jumping Single Phase 0.55m
Kindly Sponsored by Katie Bennett

Class SJ3 Show Jumping Single Phase 0.65m

Class SJ4 Show Jumping Single Phase 0.75m

This class is being run in support of #Blow for Bradley Campaign – In memory of Bradley John

Class SJ5 Show Jumping Single Phase 0.85m

Change of Course for Friday's Classes

Class SJ6 Show Jumping Single Phase 0.55m

Class SJ7 Show Jumping Single Phase 0.65m

Class SJ8 Show Jumping Single Phase 0.75m

Class SJ9 Show Jumping Single Phase 0.85m

Kindly Sponsored by Lisa Isaacs

Class SJ10 Show Jumping Single Phase 0.95m

Kindly Sponsored by Lisa Isaacs

Penalties:

One knock down	=	4 x Penalties
First run out	=	4 x Penalties
Second run out in whole course	=	Elimination
Run out with disturbance of fence	=	6 x Time Penalties
Time faults	=	1 per second over the time allowed
Starting before the bell	=	Elimination
Exceeding the time limit (Time limit is twice the optimum time)	=	Elimination
Jumping the wrong course or a fence backwards	=	Elimination
Knocking over the timing equipment	=	Elimination

Rosettes for Each Height Section after each class to Sixth Place

First placed competitors in classes SJ1 – SJ10 will be invited to the Friday Evening Performance Show Jumping Awards. Sashes to the top three places.

'Evening Dress Code'

Don't Forget, Introduced in 2022!!

More chances to reach the Supreme Ridden of Show Championship
This year the Champion & Reserve from both the Novice & Junior Sections will be eligible to compete in the Supreme Ridden of Show Championship

**Would you like to advertise your Business or
Stud on this Championship Schedule ??**

Contact Richard 07774 451156 or send me a DM

SWPA ARENA EVENTING

Unaffiliated Arena Eventing

These classes will be run on Thursday & Friday Afternoons from 1.30pm – 5.30pm

Entry Fee for all Arena Eventing classes: SWPA Members £15.00 Non-Members £18.00

Horses/Ponies MUST be 5 years old and over. Riders to be suitable size for equine ridden.

Competitors will jump a course of show jumps immediately followed by a course of cross country style fences timed.

Classes AE1 – AE5 are kindly Sponsored by CRC Equine Services



CRC EQUINE SERVICES PROFESSIONAL CLIPPING AND TRIMMING

For all your Clipping & Trimming inquiries, please contact Ceri via;

**Business Facebook Page;
CRC EQUINE SERVICES (Swansea)
Website; www.crcequine.co.uk
Mobile; 07973 755017**

Class AE1 Arena Eventing 0.45m

Class AE2 Arena Eventing 0.55m

Class AE3 Arena Eventing 0.65m

Class AE4 Arena Eventing 0.75m

Class AE5 Arena Eventing 0.85m

Change of Course for Friday's Classes

Class AE6 Arena Eventing 0.55m

Kindly Sponsored by Meddi-Mud & Meddi-Midge

Class AE7 Arena Eventing 0.65m

Kindly Sponsored by Meddi-Mud & Meddi-Midge

Class AE8 Arena Eventing 0.75m

Class AE9 Arena Eventing 0.85m

Class AE10 Arena Eventing 0.95m

Penalties:

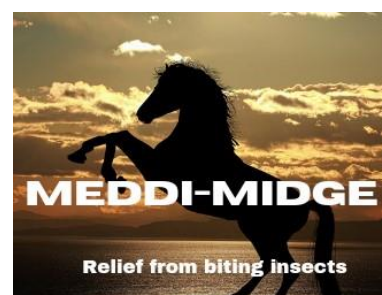
One knock down	=	4 x Penalties
First run out	=	4 x Penalties
Second run out in whole course	=	Elimination
Run out with disturbance of fence	=	6 x Time Penalties
Time faults	=	1 per second over the time allowed
Starting before the bell	=	Elimination
Exceeding the time limit	=	
(Time limit is twice the optimum time)	=	Elimination
Jumping the wrong course or a fence backwards	=	Elimination
Knocking over the timing equipment	=	Elimination

Rosettes for Each Height Section after each class to Sixth Place

First placed competitors in classes AE1 – AE10 will be invited to the

Friday Evening Performance Arena Eventing Awards. Sashes to the top three places.

'Evening Dress Code'



**PLEASE REMEMBER TO MAKE SURE YOU HAVE LONG ENOUGH
EXTENSION LEADS IF YOU REQUIRE ELECTRIC HOOK UPS**

SWPA VERSATILITY COMPETITION

Kindly Sponsored by Daren Commins

This competition is open to all competitors by combining your best results (same Rider & Pony/Horse combination) from the following classes:

Open Ridden Showing Class (excluding Lead Rein, and any Novice Ridden Class)

In-Hand Showing Class (excluding Young Handler)

Dressage Class

Show Jumping Class

Arena Eventing Class

Working Hunter Class

You can use your best FIVE results from Thursday's and or Friday's classes, but MUST include the following:

1 x In-Hand Class

1 x Ridden Class

1 x Dressage Class

1 x Jumping Type Class

Entry Fee: £8

What To Do Next:

*Collect an Entry Form from the secretary, fill in your results, and return the completed form to the secretary no later than **10am Saturday**.*

The top TEN competitors will be invited to the Presentation of Awards during the Saturday Evening Performance

Champion: £50 & Sash

Reserve Champion: £40 & Sash

First Reserve: £30 & Sash

All Ten competitors will receive a Special Rosette

The Competition Awards will be made during the Evening Performance on Saturday.

'Evening Dress' code

Below is a list of classes that can be used for this competition. Championships do NOT count

Thursday:

Open Ridden Showing Classes

Superflex Arena 2: Classes 253, 255, 265 – 285

In-Hand Showing Classes

Superflex Arena 1: Classes 201 – 227, 230 – 242

Dressage Classes

Poplar All Weather Arena: Classes 560 – 563

Show Jumping Classes

Magic Arena 1: Classes SJ1 – SJ5

Arena Eventing Classes

Magic Arenas 1 & 2: Classes AE1 – AE5

Working Hunter Classes

Magic Arena 2: Classes 310 – 313

Friday:

Open Ridden Showing Classes

Superflex Arena 2: Classes 485 – 502, 515 – 521

Ballan Ring 1: Classes 371, 373, 376 – 388

Ballan Ring 2: Classes 508, 510, 550 – 556, 558

In-Hand Showing Classes

Superflex Arena 1: Classes 431 – 456, 460 – 472

Ballan Ring 1: Classes 351 – 361

Dressage Classes

Poplar All Weather Arena: Classes 564 – 567

Show Jumping Classes

Magic Arena 1 : Classes SJ6 – SJ10

Arena Eventing Classes

Magic Arenas 1 & 2: Classes AE6 – AE10

Working Hunter Classes

Magic Arena 2: Classes 525 – 532

ALL PRIZE MONIES MUST BE COLLECTED AT THE SHOW

How would you like to win one of these garments
Showing Scene who run the management system for our
Championships have very kindly donated several
Saddle Pads & Jackets

How to win:

Medwin's Challenge on Friday:

Champion to receive a Jacket as shown here

Reserve Champion to receive a Saddle Pad as shown below

Festivals Working Hunter Championship
on Friday:

Champion to receive a Jacket as shown here

Reserve Champion to receive a Saddle Pad as shown below

Show within a Show Championship
on Saturday:

Champion to receive a Jacket as shown here

Reserve Champion to receive a Saddle Pad as shown below

Versatility Challenge Final Awards
on Saturday:

Champion to receive a Jacket as shown here

Reserve Champion to receive a Saddle Pad as shown below



Showing Scene

Showing Management Made Easy

Showing Scene is a revolutionary show management system for equine events.

As a show organiser, build and manage your equine

events at the click of a button, saving you time and effort - with no more forms to process.

Class results are real-time allowing you to go paperless in the rings.

For competitors, we've made it very simple to enter online, with no need to re-enter details, card payments even available on show days and a ring side feature to see what's on in each ring.

For more information contact us at www.showingscene.com



Evening Performances

Thursday, Friday & Saturday 'Evening Performances' are detailed below.

Please refer to the dedicated 'Evening Performance' Time Tables for approximate times.

Please also be aware that many of the classes are Preliminary Judged in adjacent rings, however be assured **ALL** exhibitors will be expected in the 'Evening Performance' Ring for Final Placings & Awards



THURSDAY EVENING PERFORMANCE

Preliminary Judging

OUTSIDE THE PAVILION RESTAURANT 3.00pm Start

PLEASE NOTE: ALL DOG CLASSES MUST BE ENTERED IN ADVANCE EITHER VIA WWW.SHOWINGSCENE.COM OR AT THE SECRETARY'S BEFORE THE START OF THE CLASS

Lorry Dog Classes Entry Fee for classes D1 - D5 £4.00

- D1 Prettiest Bitch** (Special for Best Dressed Female Handler)
- D2 Most Handsome Male** (Special for Best Dressed Male Handler)
- D3 Best Irish Brace** (Two Totally Unalike Dogs) (Special for Best Young Handler, 12yrs old & under)
- D4 Best Matched Pair** (Special for Best Young Handler, 12yrs old & under)
- D5 Best Fancy Dressed**

This is the preliminary judging for the Lorry Dog classes D1 - D5. No positions will be awarded at this point and ALL exhibits will be expected in the All Weather Ring during the 'Evening Performance' for the Final Placings at approximately 6.00pm

BALLAN RING Not Before 5.30pm (Please see Timetable)

Concours d'Elegance Classes Entry Fee for classes EP2 - EP5 £9.00

- EP2 In-Hand Concours d'Elegance.** Stallion, Mare or Gelding. Four years old and over.
- EP3 Lead Rein Concours d'Elegance.** Mare or Gelding. Four years old and over.
- EP4 Concours d'Elegance - Riders 18 years old and under.**
Stallion, Mare or Gelding. Four years old and over. (see rules for Ridden Stallions)
- EP5 Concours d'Elegance - Riders over 18 years.**
Stallion, Mare or Gelding. Four years old and over. (see rules for Ridden Stallions)

This is the preliminary judging for the Concours d'Elegance classes EP2 - EP5. The classes may be split according to entries forward. No positions will be awarded at this point and ALL exhibitors will be expected in the Superflex Ring during the 'Evening Performance' for the Final Placings and Awards from approximately 6.45pm

THURSDAY EVENING PERFORMANCE

SUPERFLEX ARENA ONE Not Before 5.45pm

Lorry Dog Classes - Final Placings

These classes will be preliminary judged outside the Pavilion at 3.00pm Friday

- D1 Prettiest Bitch** (Special for Best Dressed Female Handler)
- D2 Most Handsome Male** (Special for Best Dressed Male Handler)
- D3 Best Irish Brace** (Two Totally Unalike Dogs) (Special for Best Young Handler, 12 yrs old & under)
- D4 Best Matched Pair** (Special for Best Young Handler, 12 yrs old & under)
- D5 Best Fancy Dressed**

The winners of First & Second placed Rosettes in Classes D1 - D5 will compete for the Lorry Dog Championship during the "Evening Performance" on Saturday

Approximately 6.15pm

Fancy Dress

- EP1 Fancy Dress Entry Fee for class EP1 £6.00**
Mare or Gelding. Four years old and over.

Approximately 6.45pm

Concours d'Elegance – Final Placings

These classes will be preliminary judged in the Ballan Ring from 5.30pm Thursday (Please see Timetable)

Class EP2 is Kindly Sponsored by ANGELA TUCKER BHS AI Int SM

EP2 In-Hand Concours d'Elegance.

Class EP3 is Kindly Sponsored by RACHEL MORGANS

EP3 Lead Rein Concours d'Elegance.

Classes EP4 & EP5 are Kindly Sponsored by PENSKYBER EQUESTRIAN

EP4 Concours d'Elegance – Riders 18 years and under.

EP5 Concours d'Elegance – Riders over 18 years.

The Two highest placed exhibits from classes EP2 – EP5 will go forward to the Concours d'Elegance Championship on Saturday Evening.

Approximately 7.45pm

SWPA RMB FESTIVAL

Kindly Sponsored by TEAM PHOENIX

'Evening Dress' code for all Exhibitors

RMB OVERALL IN-HAND CHAMPIONSHIP (EVP2)

Champion, Reserve Champion & First Reserve from the following sections: -

Open In-Hand Classes 201 – 213, Open In-Hand Classes 214 – 227, M&M In-Hand Classes 230 – 242

Champion £75 & Sash Reserve Champion £50 & Sash First Reserve £25 & Sash

Champion & Reserve Champion to go forward to the SWPA Carn Nicholas Show Team Festivals Championship.

To be held on Friday Evening 1 September 2023.

Qualification cards will be awarded in the ring which you will need to gain entry to the Championship

This In-Hand Championship is a qualifier for the SWPA WYNSAND In-Hand Final

The Champion & Reserve Champion will qualify for the 2023 SWPA WYNSAND In-Hand Final.

(Qualification may be passed down to First Reserve if the Champion and or Reserve Champion has previously qualified)

The SWPA WYNSAND In-Hand Final to be held on Thursday Evening 31 August 2023

RMB OVERALL RIDDEN CHAMPIONSHIP (EVP3)

Champion and Reserve Champion from the following sections: -

Mini Ridden Classes 250 – 255, Novice Ridden Classes, 260 – 264, M&M Ridden Classes 265 – 269, Open Ridden Classes 270 – 285, Junior Ridden Classes 297 – 300.

Champion £75 & Sash Reserve Champion £50 & Sash First Reserve £25 & Sash

Champion & Reserve Champion to go forward to the SWPA Carn Nicholas Show Team Festivals Championship.

To be held on Friday Evening 1 September 2023.

Qualification cards will be awarded in the ring which you will need to gain entry to the Championship

This Ridden Championship is a qualifier for the SWPA WYNSAND RIDDEN Final

The Champion & Reserve Champion will qualify for the 2023 SWPA WYNSAND RIDDEN Final.

(Qualification may be passed down to First Reserve if the Champion and or Reserve Champion has previously qualified)

The SWPA WYNSAND RIDDEN Final to be held on Saturday Evening 02 September 2023

Approximately 8.25pm

SWPA SENIOR RIDERS FINAL (EVP4)

'Evening Dress' code for all Exhibitors

First, Second & Third placed exhibits from classes 304 – 305 to compete for the Super Ted Shield.

Presentation of Awards

Champion Sash

Reserve Champion Sash

***Please remember it is exhibitor's responsibility to be in the correct class and on time.
Exhibitors are also expected to wear the correct riding equipment as per the show rules.***

Thank you for your co-operation, Richard Broad (chairman)

Approximately 8.40pm

SWPA WYNSAND IN-HAND FINAL (SWPASUP1)

Open to winners of 'SWPA Wynsland In-Hand Qualifying Rosettes and Cards'

ENTRY FEE OF £25 MUST HAVE BEEN PRE PAID

All exhibitors MUST be wearing 'EVENING DRESS'

Method of Judging: -

Each exhibitor will be asked to complete a Freestyle Show to include the following:

Walk away from the judge and trot straight back, Figure of eight at trot including a stop.

Each exhibit will be marked as follows:

Phase One: Conformation & Freedom of Action 60 marks.

Phase Two: Manners and Way of Going 30 marks.

Star Quality: 10 marks

PRIZES: Rosettes to Sixth Place. Finalists rosettes to all entrants not placed.

First Prize £200 & Sash Second Prize £100 & Sash Third Prize £50 & Sash

Approximately 9.00pm

Beer Balance Challenge

EP10 Beer Balance Challenge. Open to Riders 14 years and over. Entry Fee £5.00 paid at the ring

South West Pony Association

It's back again for the 2023 Champs

'BEER BALANCE'

So how do you fancy riding round the show ring under floodlights with a drink in your hand, and negotiate around some obstacles all at a trot pace?

To win you must keep as much beer in the beaker as you can.

Winner is the one with the most beer left.

Fancy a go? then come and have a go on Thursday night.

Just a couple of Health & Safety rules.

You MUST wear a correctly fitting riding hat which is fastened.

If you fall off, you MUST not get back on and you will be eliminated.

Open to riders 14 years old and over. Entry Fee: £5

FRIDAY EVENING PERFORMANCE

Preliminary Judging

OUTSIDE THE PAVILION RESTAURANT 3.00pm Start

Lorry Dog Classes Entry for classes D6 - D10 £4.00

- D6 Best Rough Coat** (Special for Best Dressed Male Handler)
- D7 Best Smooth Coat** (Special for Best Dressed Female Handler)
- D8 Cutest Puppy** (6 months & under)
- D9 Fittest Veteran** (10 years & over)
- D10 Cleverest Dog**
- D11 Show Dog** (For all Breeds that are Kennel Club Registered)

This is the preliminary judging for the Lorry Dog classes D6 - D11. No positions will be awarded at this point and ALL exhibits will be expected in the All Weather Ring during the 'Evening Performance' for the Final Placings at approximately 5.30pm



FRIDAY EVENING PERFORMANCE

Preliminary Judging Continued:

BALLAN A RING

Not Before 5.30pm (Please see Timetable)

Concours d'Elegance Classes Entry Fee for classes EP6 - EP9 £9.00

EP6 In-Hand Concours d'Elegance. Mare or Gelding. Four years old and over.

EP7 Lead Rein Concours d'Elegance. Mare or Gelding. Four years old and over.

EP8 Concours d'Elegance - Riders 18 years old and under.

Stallion, Mare or Gelding. Four years old and over. (see rules for Ridden Stallions)

EP9 Concours d'Elegance - Riders over 18 years.

Stallion, Mare or Gelding. Four years old and over. (see rules for Ridden Stallions)

*This is the preliminary judging for the Concours d'Elegance classes EP6 - EP9. The classes may be split according to entries forward. No positions will be awarded at this point and **ALL** exhibitors will be expected in the Superflex Ring during the 'Evening Performance' for the Final Placings and Awards from approximately 6.15pm*

MAGIC ARENA

Not Before 7.15pm

Adult & Child / Ridden & In-Hand Pairs

EP11 Ridden Adult & Child / Ridden Pairs & In-Hand Pairs Entry Fee for class EP11 £9.00

Mare or gelding, (NO STALLIONS) Four years old and over. Adult & Child combinations **MUST** have at **LEAST** 10 years between their ages. Smaller ponies may be shown on or off the 'lead rein' Lead Rein ponies **MUST NOT** Canter

*This is the preliminary judging for the Adult & Child Ridden / Ridden & In-Hand Pairs class EP11. No positions will be awarded at this point and **ALL** exhibitors will be expected in the Superflex Ring during the 'Evening Performance' for the Final Placings and Awards at approximately 8.45pm*

FRIDAY EVENING PERFORMANCE

SUPERFLEX ARENA ONE

Not Before 5.30pm

Lorry Dog Classes - Final Placings

These classes will be preliminary judged outside the Pavilion at 3.00pm Saturday

D6 Best Rough Coat (Special for Best Dressed Male Handler)

D7 Best Smooth Coat (Special for Best Dressed Female Handler)

D8 Cutest Puppy (6 months & under)

D9 Fittest Veteran (10 years & over)

D10 Cleverest Dog

D11 Show Dog (For all Breeds that are Kennel Club Registered)

The winners of First & Second placed Rosettes in Classes D6 - D11 and the winners of First & Second placed Rosettes in Classes D1 - D5 from the Thursday 'Evening Performance' to compete for the Lorry Dog Championship

Approximately 6.15pm

Concours d'Elegance - Final Placings

These classes will be preliminary judged in the Ballan Ring from 5.30pm Friday (Please see Timetable)

Class EP6 is Kindly Sponsored by MATHEW'S FARM

EP6 In-Hand Concours d'Elegance.

Class EP7 is Kindly Sponsored by NIC & NICK

EP7 Lead Rein Concours d'Elegance.

Classes EP8 is Kindly Sponsored by KEVAN BASKEYFIELD

EP8 Concours d'Elegance- Riders 18 years and under.

Class EP9 is Kindly Sponsored by HELEN'S WELSH PONY PLAQUES

EP9 Concours d'Elegance - Riders over 18 years.

The Two highest placed exhibits from classes EP6 - EP9 will go forward to the Concours d'Elegance Championship on Saturday Evening.



Approximately 7.20pm

SWPA FESTIVALS WORKING HUNTER CHAMPIONSHIP (EVP1)

Kindly Sponsored by SUPREMACY SHOWING PRODUCTS

'Evening Dress' code for all Exhibitors

Champion & Reserve from the following sections: -

Thursday: Novice Working Hunter Classes 310 – 313 Mini Working Hunter Classes 314 – 315

Friday: Novice Working Hunter Classes 525 – 528, Open Working Hunter Classes 529 – 532

Champion £60 & Sash Reserve Champion £40 & Sash First Reserve £20 & Sash

The Champion will also receive this Special Hamper kindly donated by Equine Relief



Approximately 7.40pm

SWPA ARENA EVENTING AWARDS

Kindly Sponsored by SARA & PETE WAINWRIGHT

'Evening Dress' code for all Exhibitors

First placed exhibits from classes AE1 – AE10 to compete.

Champion Sash, Reserve Champion Sash, First Reserve Sash.

Approximately 7.50pm

SWPA SHOW JUMPING AWARDS

Kindly Sponsored by ANDREW DJ LAMNEA PHOTOGRAPHER

'Evening Dress' code for all Exhibitors

First placed exhibits from classes SJ1 – SJ10 to compete.

Champion Sash, Reserve Champion Sash, First Reserve Sash.

**PLEASE NOTE ALL GROOMS MUST DRESS APPROPRIATELY FOR A CHAMPIONSHIP SHOW
AND WEAR A HAT WHILST IN THE RING**

Approximately 8.00pm

WALES & WEST FESTIVAL CHAMPIONSHIP

Kindly Sponsored by TEAM PHOENIX. In Memory of Oldacres Sweet Violet

'Evening Dress' code for all Exhibitors

WALES & WEST OVERALL IN-HAND CHAMPIONSHIP (EVP6)

Champion, Reserve Champion & First Reserve from the following sections: -

Open In-Hand Classes 431 – 443, Open In-Hand Classes 444 – 456, M&M In-Hand Classes 460 – 472

Champion £75 & Sash Reserve Champion £50 & Sash First Reserve £25 & Sash

**Champion & Reserve Champion to go forward to the
SWPA Carn Nicholas Show Team Festivals Championship.**

To be held on Friday Evening 1 September 2023.

Qualification cards will be awarded in the ring which you will need to gain entry to the Championship

If the Champion or Reserve Champion have already qualified on Thursday for this competition the qualification may pass down to the First Reserve.

WALES & WEST OVERALL RIDDEN CHAMPIONSHIP (EVP7)

Champion & Reserve Champion from the following sections: -

Novice Ridden Classes 480 – 484, Open Ridden Classes 485 – 502, Mini Ridden Classes 505 – 510, M&M Ridden Classes 515 – 521.

Champion £75 & Sash Reserve Champion £50 & Sash First Reserve £25 & Sash

**Champion & Reserve Champion to go forward to the
SWPA Carn Nicholas Show Team Festivals Championship.**

To be held on Friday Evening 1 September 2023.

Qualification cards will be awarded in the ring which you will need to gain entry to the Championship

If the Champion or Reserve Champion have already qualified on Thursday for this competition the qualification may pass down to the First Reserve.

This Ridden Championship is a qualifier for the SWPA Wynsand Ridden Final

The Champion & Reserve Champion will qualify for the 2023 SWPA Wynsand Ridden Final.

(Qualification may be passed down to First Reserve if the Champion and or Reserve Champion has previously qualified)

The SWPA Wynsand Ridden Final to be held on Saturday Evening 02 September 2023

Approximately 8.40pm

MEDWIN'S CHALLENGE FINAL (EVP8)

Kindly Sponsored by TEAM REYNOLDS

'Evening Dress' code for all Exhibitors

The ten highest place equines form classes 550 – 558 to compete.

Presentation of Awards

Champion £60 and Sash Reserve Champion £40 and Sash First Reserve £20 and Sash

Approximately 8.50pm

SWPA PONDAROSA STUD FAMILY SHOWING CHAMPIONSHIP (EVP9)

Kindly Sponsored by PONDAROSA STUD

All exhibitors will be expected to wear 'Evening Dress'

Champion and Reserve Champion from the following sections: -

Family Showing In-Hand classes 351 – 361, Family Showing Mini Ridden classes 370 – 373, Family Showing Ridden classes 376 – 388

Presentation of Awards

Champion: Sash, £75.00 & SWPA Family Showing Trophy. Kindly donated by Rosalind Herridge

Reserve Champion: Sash & £50.00

First Reserve: Sash & £25.00

Approximately 9.10pm

Adult & Child Ridden / In-Hand & Ridden Pairs – Final Placings

This class will be preliminary judged in the Magic Arena at 7.15pm

EP11 Ridden Adult & Child / Ridden & In-Hand Pairs



Approximately 9.25pm

SWPA CARN NICHOLAS SHOW TEAM FESTIVALS CHAMPIONSHIP (EVP10)

Kindly Sponsored by CARN NICHOLAS SHOW TEAM

This Championship is open to the Champion & Reserve from the following sections:

Thursday's RMB Festival Overall In-Hand Championship and Overall Ridden Championship

Friday's Wales & West Festival Overall In-Hand Championship and Overall Ridden Championship

You MUST have your entrance card to hand to the steward in order to enter this Championship

All exhibitors MUST be wearing 'EVENING DRESS'

Method of Judging: -

All exhibitors, In-Hand & Ridden will be asked to enter the ring at walk and follow instructions requested by the stewards.

The In-Hand exhibitors will be asked to complete a Freestyle Show to include the following:

Walk away from the judge and trot straight back, Figure of eight at trot including a stop.

The Ridden exhibitors will be asked to complete a Freestyle Show of their own choice, not to exceed two minutes which must include;

Walk away from the judge and trot straight back and a freestyle show including a stop.

Each exhibit will be marked as follows:

Performance & Freestyle Show: 60 marks

Conformation / Type: 30 marks

Star Quality: 10 marks

Champion £100 & Sash Reserve Champion £75 & Sash First Reserve £50 & Sash

Approximately 10.00pm

WHEEL BARROW RACING

Kindly Sponsored by THE DRAPER FAMILY

EP12 Wheelbarrow Racing Entry Fee £2.00 paid at the ring

Teams of 2, one in the wheelbarrow and one pushing.

Teams to complete the course laid out. Lowest time wins.

SASHES TO THE WINNERS, Rosettes for everyone.

Very Special Rosette for Best Decorated Wheelbarrow

Champions to receive Special Wheelbarrow Trophies



***We would like to thank all our
sponsors for their very kind
generosity without whom we
wouldn't be able to run these
championships***

***Please remember it is exhibitor's responsibility to be in the correct class and on time.
Exhibitors are also expected to wear the correct riding equipment as per the show rules.***

Thank you for your co-operation, Richard Broad (chairman)

SATURDAY EVENING PERFORMANCE

SUPERFLEX ARENA ONE Not Before 6.00pm

CONCOURS d'ELEGANCE CHAMPIONSHIP (EVP12)

Kindly Sponsored by KINGSLEIGHS SPECIALIST EQUINE COLLEGE

The Two highest placed exhibits from classes EP2 – EP9 to compete for the Concours d'Elegance Championship.

Champion £50 and Sash

Reserve Champion £25 and Sash

First Reserve £15 and Sash

Approximately 6.20pm

VETERAN HORSE SOCIETY REGIONAL FINAL AWARDS (EVP13)

'Evening Dress' code for all Exhibitors

Judge: Miss C Knox

First & Second placed exhibits from classes VHS7 – VHS12 to compete.

The Champion & Reserve Champion will qualify for the VHS Supreme Final

Approximately 6.30pm

SWPA POLTIMORE PLANT Ltd DRESSAGE FINAL (EVP14)

Kindly Sponsored by POLTIMORE PLANT Ltd

'Evening Dress' code for all Exhibitors

DRESSAGE CHAMPIONSHIP

First placed exhibits from classes 560 sections 1&2, 561, 562, 563, 564 sections 1&2, 565 & 567 (NOT 566) to compete for the Dressage Championship (EVP14)

Presentation of Awards

Champion £50 and Sash

Reserve Champion £30 and Sash

First Reserve £20 and Sash

Approximately 6.40pm

MINI RIDDEN CHAMPIONSHIP (EVP11)

Kindly Sponsored by SNUGGY HOODS

'Evening Dress' code for all Exhibitors

First & Second exhibits from classes 85 - 88 to compete for the

2023 SWPA SNUGGY HOODS Mini Ridden Pony of the Year Trophy. Kindly sponsored by Rosalind Herridge.

Champion £50 and Sash

Reserve Champion £30 and Sash

First Reserve £15 and Sash

CHAMPION & RESERVE to go forward to the Supreme Ridden of show Championship.

Approximately 7.00pm

SWPA 'SHOW WITHIN A SHOW' SUPREME CHAMPIONSHIP (EVP16)

Kindly Sponsored by TIERS'n'TAILS ROSETTES & KDM PHOTOGRAPHY

'Evening Dress' code for all Exhibitors

Champion & Reserve from the following sections to compete:-

In-Hand, classes 600 – 612, Mini Ridden, classes 620 – 623, Ridden, classes 625 – 639

The Champion to receive the SWPA Show within a Show Trophy.

All competitors will receive a special 'Finalist Rosette'

Champion £75 & Sash

Reserve Champion £50 & Sash

First Reserve £25 & Sash

Approximately 7.30pm

VERSATILITY HORSE / PONY AWARDS

Kindly Sponsored by DAREN COMMINS

'Evening Dress' code for all Exhibitors

Champion £50 & Sash, Reserve Champion £35 & Sash, First Reserve £25 & Sash. All other exhibitors will be awarded a Very Special Rosette.

**PLEASE NOTE ALL GROOMS MUST DRESS APPROPRIATELY FOR A
CHAMPIONSHIP SHOW AND WEAR A HAT WHILST IN THE RING**

Approximately 7.40pm

SWPA WYNSAND RIDDEN FINAL (SWPASUP2)

Open to winners of 'SWPA WYNSAND RIDDEN QUALIFYING ROSETTES AND CARDS'

ENTRY FEE OF £25 MUST HAVE BEEN PRE PAID

All exhibitors MUST be wearing 'EVENING DRESS'

Exhibitors will be asked to complete a Freestyle Show of their own choice, not to exceed **two minutes** which must include;
Walk away from the judge and trot straight back and a freestyle show including a stop.

Each exhibit will be marked as follows:

Performance & Freestyle Show: 60 marks

Conformation / Type: 30 marks

Star Quality: 10 marks

PRIZES: Rosettes to Sixth Place. Finalists rosettes to all entrants not placed.

First Prize £200 & Sash Second Prize £100 & Sash Third Prize £50 & Sash

***The Champion to receive the SWPA Supreme Ridden of Show Geoff Baker Memorial Trophy.
Kindly donated by Mrs D Baker***

Approximately 8.10pm

ROGER NOLAN SPECIAL AWARDS

Kindly Sponsored by ROGER NOLAN

During the show 'Special Award' cards will be given out to those individuals that in the opinion of either the Judges or Show Officials, have shown that unique bonding between themselves and their horse/pony. Recipients of 'Special Award' cards will be invited without their horse/pony to attend the Saturday Evening Performance for the Presentation of Awards

Owing to the generosity of our sponsor we are able to give SIX special awards who will all receive a Very Special Sash along with monetary prizes of £50

Approximately 8.20pm

SUPREME IN-HAND OF SHOW CHAMPIONSHIP (EVP17)

Kindly Sponsored by LISA DAVEY

'Evening Dress' code for all Exhibitors

Champion & Reserve Champion from the following sections:-

Open Light Horse, Arab & Part-Bred, Mountain & Moorland & Owner Bred to compete for the

South West Pony Association 2023 Supreme In-Hand of Show Championship

Champion £100 & Sash Reserve Champion £50 & Sash First Reserve £25 & Sash

Approximately 8.40pm

SUPREME WORKING HUNTER OF SHOW CHAMPIONSHIP (EVP18)

Kindly Sponsored by BARROWHILL STUD

'Evening Dress' code for all Exhibitors

Champion & Reserve Champion from the following sections: -

Mini Working Hunter, Novice Working Hunter, and Open Working Hunter to compete for the

South West Pony Association 2023 Working Hunter of Show Fidela Plate.

Kindly donated by Asa Luxton

Champion £100 & Sash Reserve Champion £50 & Sash First Reserve £25 & Sash

Approximately 9.00pm

SUPREME RIDDEN OF SHOW CHAMPIONSHIP (EVP19)

Kindly Sponsored by HOLMEDOWN HIGHLAND PONIES

'Evening Dress' code for all Exhibitors

Champion & Reserve Champion from the following sections: -

Ridden Light Horse, Ridden Mountain & Moorland, Ridden Arab & Part Bred, Mini Ridden, Junior Ridden & Novice Ridden to compete for the

South West Pony Association 2023 Ridden Princess Diana Memorial Trophy.

Kindly donated by Mr & Mrs Vowles

Champion £100 & Sash Reserve Champion £50 & Sash First Reserve £25 & Sash

Approximately 9.20pm

SWPA MEDWIN BROAD MEMORIAL SUPREME OF SHOW 2023 (EVP20)

Kindly Sponsored by

LISA DAVEY'S LIVESTOCK TRANSPORT Ltd in memory of Medwin Broad

'Evening Dress' code for all Exhibitors

Supreme & Reserve Supreme from the following sections: -

Supreme of Show In-Hand, Supreme of show Working Hunter, Supreme of show Ridden to compete for the

SWPA 2023 Supreme of Show Medwin Broad Memorial Trophy

Supreme Champion £150 & Sash, Reserve Supreme Champion £100 & Sash,

First Reserve £75 & Sash

There is also a special prize of

£100 to the Best Turned Out in this competition.

Very Kindly Sponsored by Lisa Davey

Davey's Livestock Transport

01566 774251 / 07970 790230 / 07970 793838

info@daveysliverstock.co.uk www.daveysliverstock.co.uk



TYPE 2 AUTHORISED LIVESTOCK TRANSPORTER COVERING THE WHOLE OF THE UK



- No job too big or too small, we have a vehicle to suit them all.
- Personal attention guaranteed at all times.
- Dairy cattle and pedigree cattle a speciality.
- Keeping the farming industry moving for over 40 years.

Proud to support the SWPA

South West Pony Association

Snaffle Bitting

What does South West Pony Association consider a snaffle bit?

We are aware that different societies have different rules for snaffle bits. Here at SWPA the bits shown below are correct bits to use at our shows for NOVICE RIDDEN, NOVICE WORKING HUNTER, LEAD REIN AND FIRST RIDDEN CLASSES and will be compliant with our rules. Any bit that has a fixed-point connection, and subsequently an action on the poll will not be regarded as a snaffle.

PLEASE NOTE:

SWPA DO NOT CONSIDER THE 'WILKIE BIT' TO BE A SNAFFLE



Eggbutt snaffle



Mullen mouth snaffle



Fulmer snaffle



Baucher snaffle – hanging cheek



Hollow mouthed loose ringed snaffle



French Link snaffle

NB.

Types of covering for the mouthpiece may include copper, nylon, rubber, stainless steel and nickel.

***Please don't forget to clear up around your vehicle and take your LITTER and DROPPINGS home.
All we ask is that as you leave you check around your lorry and pick up any litter and droppings
Thank you for your co-operation Richard Broad (chairman)***

CHAMPIONSHIP RULES

*It is our wish that this championship show will be run in a very friendly but professional manner.
To that end there are some extra rules for this Show.*

No Pony/Horse is allowed to be substituted.
Correct Showing Dress to be worn in the Ring.
All Grooms to be neatly dressed and **MUST** wear a cap or hat whilst in the ring.
Anyone thought by the management to be incorrectly dressed may be asked to leave the ring.

SHOW RULES

- 1) The Show is run under the rules of the South West Pony Association's constitution and general show rules, a copy of which can be obtained from our office. Email: RichardatSWPA@aol.com or downloaded from our website.
- 2) The organisers, SWPA and The David Broome Event Centre accept NO responsibility for any accident, loss or damage to any competitors, spectators, animals or property. It shall be a condition of entry that competitors will hold the organisers blameless and indemnify them against any loss, damage or legal proceedings.
- 3) All competitors take part at their OWN RISK and are expected to exercise due care at all times and obey all notices displayed.
- 4) The SWPA recommends that all exhibitors should have adequate personal sports insurance.
- 5) All accidents/incidents/falls should be reported to the Secretary of the individual show.
- 6) Exhibitors:
Exhibitors may not knowingly exhibit any Pony/Horse that has been bred, sold, leased or produced by the Judge, or his/her immediate family or his/her employer, or from which financial gain has been made in the last two years. Exhibitors may be asked to produce documentation if required.
An exhibitor may not show an equine in a competition class judged by any member of his/her immediate family, may not show under a judge for whom he/she has produced an equine within two years of the current year date, and may not ride in a class judged by someone for whom he/she has ridden in a competition within two years of the current year date.
Exhibitors in both Ridden and In-Hand classes should wear NO Face and or Body Jewellery
- 7) Equines:
All Ridden Ponies MUST be 4 years old & over.
All Colts / Stallions two years old and over must be in possession of a current license, (unless otherwise governed by the individual Breed Society) and adequately bitted.
All Stallions should wear 'Stallion Badges' in all showing classes
In-Hand Stallions / Colts may NOT be led by any Juniors who have not attained their 14th birthday before 1st January in the current year.
Reins that restrict the natural movement of a pony/horse MUST not be used in the ring.
Snaffle Bridles only should be used in Lead Rein, First Ridden, Novice Ridden & Novice Ridden Working Hunter Classes. 'Wilkie Bits' may not be used as Snaffles. (Details of acceptable Snaffle Bridles can be obtained from the Secretary)
Mountain & Moorland ponies MUST be shown in their natural state and trimming MUST comply with the respective Pure Breed Society Stud Books.
Mountain & Moorland ponies and Part Breds must be registered with their respective Pure Breed Societies and registration numbers to be stated on the entry forms and when entered on the day, (unless otherwise stated on the individual class). These conditions also apply to horses/ponies entered as Pure Bred, Part Bred & Anglo Arabs.
Mares with foals at foot MUST have attained their 4th birthday.
All foals being shown MUST be a minimum of three weeks old on the day of the show. No Foals to be Clipped, Lunged or shown Bitted. Mountain & Moorland Foals must be eligible for entry into their respective Pure Breed Society Stud Books.
SWPA advise all equines are vaccinated against Equine Influenzas. We reserve the right to check passports of all equines attending the show at any time. Please be aware there may be additional rules applied by The David Broome Event Centre. These will be posted on the venue's website.
- 8) Riders / Handlers:
Any Pony Stallion not exceeding 138cms or Small Breed Mountain & Moorland Stallions may NOT be ridden by juniors who have NOT attained their 12th birthday before 1st January in the current year at any show affiliated to South West Pony Association. Stallions exceeding 138cms or Large Breed Mountain & Moorland Stallions may NOT be ridden by Juniors who have NOT attained their 14th birthday before 1st January in the current at any show affiliated to South West Pony Association. (unless otherwise governed by the individual Breed Society)
Junior Handlers of equines in all In-Hand classes, aged 14 years and under should wear correctly secured current British Standard skull caps/riding hats.
SWPA recommend all riding hats are Hat Tagged
All Children MUST have attained their 3rd birthday by 1st January in the current year before competing in ANY ridden classes, and must comply with the upper limit of the class entered, and be prepared to supply a copy of their birth certificate if requested.
Riders MUST be within the correct age limits for the type of Horse/Pony ridden for the qualification to be valid.
In Ridden Classes, if a rider falls off at any time whilst in the ring, both pony/horse and rider MUST leave the ring, rider dismounted, and take no further part in the class.
Correct British Standard Headgear conforming to European VG1 and/or PAS015 both with BSI Kitemarking or current standards to be worn at all times when mounted, with chinstraps from 3 points on the hat fastened.
NO Spurs to worn in any ridden class, and Showing Canes MUST not exceed 30".
In Lead Rein classes the lead rein should be attached to the noseband only, and held in the Leader's outside hand.
- 9) Judges:
The Judges' decision is final.
- 10) Welfare of Equines:
If an equine is deemed to be being mistreated in any way whilst at the show ground, the person or persons responsible may be asked to leave the show ground and may be reported to the authorities. The SWPA is also supporting the appropriate size/weight of rider for the equine they are riding.
- 11) Behaviour:
Behaviour by an exhibitor or his/her servants deemed unsporting or unreasonable, may be requested to leave the showground.
Any animal which in the opinion of the judge, is deemed out of control will be requested to leave the ring and/or the show ground.
Any exhibitors or their servants seen using social media to air disputes will be requested to remove all their exhibits from the showground and forfeit any entry fees paid.
The organisers reserve the right to refuse entry of persons and or equines at the management's / secretary's discretion and without assigning a reason.
All Dogs MUST be kept on leads at all times.
- 12) Objections:
Objections must be in writing and given to the Secretary within 30 minutes of the completion of the relevant class and accompanied with a fee of £15.00 (refundable if the objection is upheld)
- 13) Parents should be aware that there will be official photographers at this show, and if they do not want their children photographed, THEY MUST make their own arrangements with the photographers. Official photographers ONLY will be allowed in the rings.
- 14) Entry Fees:
Entry Fees including all associated fees are not refundable.

If you have any queries regarding the rules please contact Richard Broad on 07774 451156