



# South West Pony Association



## 2020 PROVISIONAL SCHEDULE CHAMPIONSHIP SHOW

*Incorporating*

*RMB Festival, Wales & West Festival,  
Show within a Show.*

*Family Showing Series, Open Medal, Native Medal,  
Dressage & Broad Family Challenge.*

*Including*

*TSR Wales & South West Regional Finals  
VHS Regional Qualifier*

**THURSDAY, FRIDAY & SATURDAY**

**3 – 5 SEPTEMBER 2020**

*To be held at*

**THE DAVID BROOME EVENT CENTRE, CRICK,  
MONMOUTHSHIRE. NP26 5XP**

**CLASSES FOR ALL TYPES OF EQUINES**

**MANY CLASSES OPEN TO NON MEMBERS**

For enquires: Phone 01934 633304 Email: [MedwinatSWPA@aol.com](mailto:MedwinatSWPA@aol.com) Web Site: [www.swpa.co.uk](http://www.swpa.co.uk)

ALL REGISTRATIONS, QUALIFICATIONS & ENTRIES CAN NOW BE PROCESSED  
ON-LINE AT [www.showingscene.com](http://www.showingscene.com)

CLOSING DATE FOR ON-LINE PRE-ENTRIES MIDNIGHT ON 28 AUGUST 2020

Entries after these dates and entries on the day at extra cost

# Welcome to the South West Pony Association's 2020 Championship Show

*Held once again at The David Broome Event Centre, Crick, Monmouthshire. As last year we will be occupying the whole site, and our thanks go to Mr & Mrs Broome and team for all their help and encouragement towards our association.*

*It is our aim to make this yet another show to remember and to this end the watch phrase is, 'We are going to have Fun'.*

*As in previous years all entrants in the championship classes will receive a place or finalist rosette, so that no one will go home empty handed.*

*As you will see, once again the schedule comprises a wide range of classes, so please take time to read the schedule and time tables.*

*The 'Festivals' on Thursday & Friday are open to SWPA registered exhibitors and NON SWPA registered exhibitors, and this year there are many 2020 Championship late qualifiers, along with extra qualifiers for the prestigious SWPA Supreme Mini Ridden, In-Hand and Ridden Championships. There will be floodlit 'Evening Performance' classes on Thursday, Friday & Saturday evenings. Thursday Evening events will include the RMB Festival Series Final, Fancy Dress, Concours d'Elegance & Supreme Mini Ridden Final. Sponsored by Trucksmith Ltd.*

*Friday Evening will include the following prestigious events: - Lorry Dog Finals, Wales & West Festival Finals, along with, SWPA Home Produced Series Finals, Concours d'Elegance, SWPA Native Medal, Broad Family Challenge Final, SWPA In-Hand Supreme Final, along with other favourites Concours d'Elegance & Wheelbarrow Racing.*

*Saturday Evening will include the following prestigious events: - 'Star for the Future' series Final, Mini Ridden Final sponsored by Snuggy Hoods, TSR Wales & South West Regional Final, Concours d'Elegance Final, VHS Regional Final, SWPA Ridden Supreme Final, and finishing up with the New Supreme of Show.*

*We look forward to seeing good entries in the popular 'Evening Performance' classes.*

*There will be a Live Band on Saturday night in the Pavilion Bar / Restaurant, so come along and enjoy yourselves.*

*Wishing you all the very best of success, and thank you for all your continued support.*

*Medwin & Richard*

*Copyright JCS Enterprises. Schedule compiled and designed by Richard Broad. 01934 633304*

## INTRODUCTION TO THE SCHEDULE

**Please take care to read the schedule carefully and the rules ascertaining to many of the classes. Many of the following classes will be split into either, heights, ages or breeds as entries warrant.**

**NONE of the classes listed will be amalgamated.**

***May I remind all exhibitors that it is your responsibility to make sure you are in the correct class and on time. Any announcements given on the public address system or by the stewards are for guidance only.***

***Please make sure you have read the Show Rules  
Richard Broad (chairman)***

# SHOW ENTRY FEES

## ALL CHAMPIONSHIP CLASSES:

Classes 1 – 141      £15.00 per class

**ENTRIES AT THE SHOW £18.00 PER CLASS + REGISTRATION FEE**

## RMB FESTIVAL, WALES & WEST FESTIVAL, SHOW WITHIN A SHOW, VHS CLASSES:

Classes 201 – 333, 431 – 545, 600 – 642, VHS1 – VHS6

SWPA Registered Exhibitors      £12.00 per class

Non SWPA Registered Exhibitors      £15.00 per class

## FAMILY SHOWING CLASSES / BROAD FAMILY CHALLENGE CLASSES:

Classes 351 – 390, 550 – 558

SWPA Registered Exhibitors      £10.00 per class

Non SWPA Registered Exhibitors      £13.00 per class

## DRESSAGE CLASSES:

Classes 560 – 568

SWPA Registered Exhibitors      £15.00 per class

Non SWPA Registered Exhibitors      £18.00 per class

## TSR CLASSES:

Classes TSR1 – TSR16

All Exhibitors      £13.00 per class

## SWPA TEAM CHALLENGE:

Class SWPATEAM

Each Team Member      £8.00

## WORKING HUNTER MASTER CLASS:

Class MC1

SWPA Registered Exhibitors      £8.00 per class

Non SWPA Registered Exhibitors      £11.00 per class

## EVENING PERFORMANCE CLASSES :

Classes EP4 – EP 14

All Exhibitors      £8.00 per class

*SWPA will make a donation from the Dog Show and Evening  
Performance classes to Cancer Research*

**ALL ENTRIES CAN BE MADE ON-LINE AT [www.showingscene.com](http://www.showingscene.com)**

**ALL ENTRIES MADE AFTER MIDNIGHT ON 28 AUGUST 2020 AND ON THE DAY  
£3 EXTRA PER CLASS**

## STABLING

Stabling has been arranged for the championships, and can be booked through the  
**SWPA ONLY** via [www.showingscene.com](http://www.showingscene.com)

**NO** Stables can be booked through The David Broome Event Centre.

Stables will be available from 1.00pm on Wednesday 2 September @ £75.00 duration

*All stables must be vacated by 10.00am Sunday 6 September.*

Please Note: It is **NOT** possible to hire stables for single days

FOUNDER MEMBERS: Mr Richard Broad, Mrs Medwin Broad.

CHAIRMAN: Mr Richard Broad

CHAMPIONSHIP SHOW ORGANISER: Mr Richard Broad

CHAMPIONSHIP SHOW SECRETARY: Mrs Medwin Broad

*Richard and Medwin wish to thank all those who have given up  
their time to help with the running of this show.*

*The management team hope you all enjoy your weekend*

***Thank you for your co-operation, Richard Broad (chairman)***

# South West Pony Association's

## 2020 Championship Schedule

### *Forward*

To help guide you through the schedule here are a few tips.

The Time Tables should be your reference for class start times and where the classes are being run. The Time tables also have the judges names listed. There is also a complete list of Judges at the beginning of this schedule. The Schedule has the complete definition of the classes and eligibility to enter.

<b>Classes 1 – 141</b>	<b>Championship Classes:</b> You MUST have qualified for these classes and be a 2020 Registered SWPA exhibitor.
<b>Classes 201 – 333</b>	<b>RMB Festival Classes:</b> These classes will be held on Thursday and are open to SWPA members and Non-members.
<b>Classes 351 – 409</b>	<b>SWPA Family Showing Series:</b> These classes will be held on Friday and are open to SWPA members and Non-members. This classes are for those competitors who genuinely do the work themselves and produce from home.
<b>Classes 431 – 545</b>	<b>SWPA Wales &amp; West Festival Classes:</b> These classes will be held on Friday and are open to SWPA members and Non-members.
<b>Classes 560 – 568</b>	<b>SWPA Dressage Competition:</b> These classes will be held on Thursday & Friday and are open to SWPA members and Non members.
<b>Classes NM1 – NM2</b>	<b>SWPA Native Medal Awards Classes:</b> You have to be pre-qualified for these classes.
<b>Classes 600 – 642</b>	<b>SWPA 'Show within a Show Classes:</b> These classes will be held on Saturday, and are open to SWPA members and Non-members.
<b>Classes 550 – 558</b>	<b>Broad Family Challenge Classes:</b> These classes will be held on Friday, and are open to SWPA members and Non-members.
<b>Classes VHS1 – VHS6</b>	<b>Veteran Horse Society Regional Qualifier Classes:</b> These classes are ONLY open to exhibitors that have qualified from a VHS Area Qualifier.
<b>Classes TSR1 – TSR16</b>	<b>TSR Regional Final Classes:</b> These classes will be held on Saturday, and are open to qualified handlers/riders who hold a TSR, SWPA or Equifest qualification card. Cards MUST be shown to the steward on entering the ring.

### **PLEASE NOTE:**

**ON-LINE PRE-ENTRIES MUST BE RECEIVED BY MIDNIGHT ON 28 AUGUST 2020**  
[www.showingscene.com](http://www.showingscene.com)

**Entries after this date and entries taken on the day at extra cost**

### **CLOSURE OF CLASSES:**

**AN IN-HAND CLASS WILL BE DEEMED CLOSED TO LATE ENTRANTS WHEN THE FIRST EXHIBIT BEGINS ITS INITIAL TROT ROUND.**

**A RIDDEN CLASS WILL BE DEEMED CLOSED TO LATE ENTRANTS WHEN THE EXHIBITORS BEGIN THE INITIAL TROT ROUND**

**Don't forget you can pay your registration fees and entry fees online at [www.showingscene.com](http://www.showingscene.com)**

## CHAMPIONSHIP CLASSES 1 – 141

**PLEASE NOTE: You MUST have qualified for these classes and be a 2020 Registered SWPA exhibitor**

### OPEN IN-HAND CLASSES

**ROSETTES IN CLASSES 1 – 13 ARE KINDLY SPONSORED BY S & J EQUESTRIAN**

#### Championship 'B'

**Class 1 Riding Horse Hack. Any age.** Colt, Filly, Mare or Gelding. Riding Horse to exceed 148cms at maturity. Hack not to exceed 160cms at maturity  
(Special Rosette to Best Youngstock)

#### Championship 'E'

**Class 2 Hunter Type. Any age.** Colt, Filly, Mare or Gelding. To exceed 148cms at maturity.  
(Special Rosette to Best Youngstock)

#### Championship 'C'

**Class 3 Show Cob. Any age.** Colt, Filly, Mare or Gelding. . (Special Rosette to Best Youngstock)

**CHAMPIONSHIP (ch1): 1st & 2nd placed exhibits from classes 1 – 3 to compete for the 2020 SWPA In-Hand Light Horse of the Year Championship.**

#### Championship 'C'

**Class 4 Traditional Cob. Any age.** Colt, Stallion, Filly, Mare or Gelding. (Special Rosette to Best Youngstock)

#### Championship 'X'

**Class 5 X Race Horse.** Stallion, Mare or Gelding. Four years old and over. The equine MUST have raced either on the flat, over jumps or point-to-point.  
To be judged on the suitability to compete in all disciplines.

***The winner to receive a sash kindly donated by Angela Dark***

#### Championship 'W'

**Class 6 World Breeds. Any age.** Colt, Stallion, Filly, Mare or Gelding. (Special Rosette to Best Youngstock)  
(Excluding British Native Breeds, M&M Part Breds, Pure, Part Bred & Anglo Arab)

#### Championship 'P'

**Class 7 Moorland & Hill Bred. Any age.** Colt, Stallion, Filly, Mare or Gelding. (Special Rosette to Best Youngstock)  
(Exhibits must be Pure Bred Natives, but not eligible to be shown in Mountain & Moorland classes)

#### Championship 'Z'

**Class 8 Miniature Horse. Any age.** Colt, Stallion, Filly, Mare or Gelding. Registered with their respective Miniature Horse Society.  
(Special Rosette to Best Youngstock)

**CHAMPIONSHIP (ch2): 1st & 2nd placed exhibits from classes 4 – 8 to compete for the 2020 SWPA Mixed Breeds of the Year Championship.**

#### Championship 'D'

**Class 9 Spotted Pony/Appaloosa. Any age.** Colt, Stallion, Filly, Mare or Gelding. (Special Rosette to Best Youngstock)

**Class 10 Palomino. Any age.** Colt, Stallion, Filly, Mare or Gelding. (Special Rosette to Best Youngstock)

**Class 11 Piebald/Skewbald. Youngstock.** Colt, Filly, or Gelding. Yearling, Two and Three year old. (Special Rosette to Best Yearling)

**Class 12 Piebald/Skewbald. Four and over.** Stallion, Mare, or Gelding.

**Class 13 Dun. Any age.** Colt, Stallion, Filly, Mare or Gelding. (Special Rosette to Best Youngstock)

**CHAMPIONSHIP (ch3): 1st & 2nd placed exhibits from classes 9 – 13 to compete for the 2020 SWPA In-Hand Coloured Horse/Pony of the Year Championship.**

**ROSETTES IN CLASSES 14 – 16 ARE KINDLY SPONSORED BY ASA LUXTON Dip W.C.F. FARRIER**

#### Championship 'V'

**Classes 14 – 16 are open to Stallion, Mare or Gelding**

**Class 14 In-Hand Veteran.** Fifteen – Nineteen years old.

**Class 15 In-Hand Veteran.** Twenty – Twenty Four years old.

**Class 16 In-Hand Veteran.** Twenty Five years old and over.

**CHAMPIONSHIP (ch5): 1st & 2nd placed exhibits from classes 14 – 16 to compete for the 2019 SWPA In-Hand Veteran Horse/Pony of the Year Championship.**

**ROSETTES IN CLASSES 17 – 18 ARE KINDLY SPONSORED BY S & J EQUESTRIAN**

#### Championship 'R'

**Class 17 Competition Horse/Pony Youngstock.** Colt, Filly or Gelding. Yearling, Two and Three year old. (Special Rosette to Best Yearling)

**Class 18 Competition Horse/Pony. Four and over.** Stallion, Mare or Gelding. .

**CHAMPIONSHIP (ch7): 1st & 2nd placed exhibits from classes 17 – 18 to compete for the 2020 SWPA In-Hand Competition Horse/Pony of the year Championship.**

**SASHES IN THIS LIGHT HORSE CHAMPIONSHIP ARE KINDLY SPONSORED BY S & J EQUESTRIAN**

#### IN-HAND LIGHT HORSE / PONY CHAMPIONSHIP (ch9):

**Winners of Champion & Reserve Champion Rosettes from classes 1 – 18 to compete for the 2020 SWPA In-Hand Light Horse/Pony of the Year Rosedale Salver.**

**Kindly Donated by the ROSEDALE STUD, Mr & Mrs L Partridge.**

**Sashes for Champion & Reserve Champion**

**CHAMPION & RESERVE to go forward to the Supreme In-Hand of Show Championship  
to be held during Saturday night Evening Performance.**



## PART BRED IN-HAND CLASSES

### ROSETTES IN CLASSES 19 – 26 ARE KINDLY SPONSORED BY S & J EQUESTRIAN

#### Championship 'F'

**Class 19 M&M Part Bred. Youngstock.** Colt, Filly or Gelding. Yearling, Two and Three year old. Not to exceed 158cms at maturity.  
(Special Rosette to Best Yearling)

**Class 20 M&M Part Bred. Four and over.** Stallion, Mare or Gelding. Not exceeding 158cms.

**CHAMPIONSHIP (ch4): 1st & 2nd placed exhibits from classes 19 – 20 to compete for the 2020 SWPA In-Hand M&M Part Bred of the Year Championship.**

#### Championship 'A'

**Class 21 Part Bred & Anglo Arab. Any age** Colt, Stallion, Filly, Mare or Gelding. (Special Rosette to Best Youngstock)

**Class 22 Pure Bred Arab. Any age.** Colt, Stallion, Filly, Mare or Gelding. (Special Rosette to Best Youngstock)

**CHAMPIONSHIP (ch6): 1st & 2nd placed exhibits from classes 21 – 22 to compete for the 2020 SWPA In-Hand Pure / Part Bred / Anglo Arab of the Year Championship.**

#### Championship 'G'

**Class 23 Riding Pony. Youngstock.** Colt, Filly or Gelding. Yearling. Two and Three year old. (Special Rosette to Best Yearling)

**Class 24 Riding Pony. Four and over.** Stallion, Mare or Gelding.

#### Championship 'H'

**Class 25 Show Hunter Pony. Youngstock.** Colt, Filly or Gelding. Yearling. Two and Three year old. (Special Rosette to Best Yearling)

**Class 26 Show Hunter Pony. Four and over.** Stallion, Mare or Gelding.

**CHAMPIONSHIP (ch18): 1st & 2nd placed exhibits from classes 23 – 26 to compete for the 2019 SWPA In-Hand Show Riding / Show Hunter Pony of the year Championship**

### SASHES IN THIS PART BRED CHAMPIONSHIP ARE KINDLY SPONSORED BY S & J EQUESTRIAN

#### IN-HAND PART BRED CHAMPIONSHIP (ch20):

**Winners of Champion & Reserve Champion Rosettes from classes 19– 26 to compete for the 2020 SWPA In-Hand Part Bred of the Year Championship**  
**Sashes for Champion & Reserve Champion**

**CHAMPION & RESERVE to go forward to the Supreme In-Hand of Show Championship to be held during Saturday night Evening Performance.**

## OWNER BRED IN-HAND CLASSES

#### Championship 'O'

**ALL EXHIBITS MUST BE BRED, OWNED AND SHOWN BY A MEMBER OF THE FAMILY.**

(Mountain & Moorland Ponies MUST be registered with their respective Pure Breed Society Stud Books)

**Class 27 Mountain & Moorland. Youngstock.** Colt, Filly or Gelding. (Special Rosette to Best Yearling & Best Foal)

**Class 28 Mountain & Moorland. Four and over.** Stallion Mare or Gelding.

**Class 29 Open (excluding M&M). Youngstock.** Colt, Filly or Gelding. (Special Rosette to Best Yearling & Best Foal)

**Class 30 Open (excluding M&M). Four and over.** Stallion, Mare or Gelding.

#### OWNER BRED IN-HAND CHAMPIONSHIP (ch29):

**First & Second placed exhibits from classes 27 – 30 to compete for the 2020 SWPA Owner Bred of the year**  
**Sashes for Champion & Reserve Champion**

## OPEN RIDDEN CLASSES

### ROSETTES IN CLASSES 31 – 48 ARE KINDLY SPONSORED BY TRANSCAL

#### Championship 'D1'

**PLEASE STATE IF YOU ENTERING CLASSES 31 – 34 AS A LEAD REIN**

**Class 31 Ridden Dun.** Stallion, Mare or Gelding. Four years old and over. Rider any age. (See Rules for Ridden Stallions)

**Class 32 Ridden Spotted/Appaloosa.** Stallion, Mare or Gelding. Four years old and over. Rider any age. (See Rules for Ridden Stallions)

**Class 33 Ridden Palomino.** Stallion, Mare or Gelding. Four years old and over. Rider any age. (See Rules for Ridden Stallions)

**Class 34 Ridden Piebald/Skewbald.** Stallion, Mare or Gelding. Four years old and over. Rider any age. (See Rules for Ridden Stallions)

**CHAMPIONSHIP (ch14): 1st & 2nd placed exhibits from classes 31 – 34 to compete for the 2020 SWPA Ridden Coloured Horse/Pony of the Year Championship.**

#### Championship 'VI'

**Classes 35 – 37 are open to Stallion, Mare or Gelding Rider any age. (See rules for Ridden Stallions)**

**Class 35 Ridden Veteran.** Fifteen – Nineteen years old.

**Class 36 Ridden Veteran.** Twenty - Twenty Four years old and over.

**Class 37 Ridden Veteran.** Twenty Five and over.

**CHAMPIONSHIP (ch15): 1st & 2nd placed exhibits from classes 35 – 37 to compete for the 2020 SWPA Ridden Veteran Horse/Pony of the Year Championship.**

***Please respect The David Broome Centre facilities  
by putting all your litter, cans etc. in the bins provide.***

***Thank you for your co-operation, Richard Broad (chairman)***

### Championships 'E1', 'B1', 'C1'.

- Class 38 Ridden Light/Middle/Heavyweight Hunter.** Mare or Gelding. Four years old and over. Exceeding 148cms  
Riders to have attained their 16th birthday by 1st January in the current year.
- Class 39 Ridden Riding Horse.** Mare or Gelding. Four years old and over.  
Exceeding 148cms. Riders to have attained their 15th birthday by 1st January in the current year.
- Class 40 Ridden Hack.** Mare or Gelding. Four years old and over. Not to exceed 160cms.  
Riders to have attained their 15th birthday by 1st January in the current year.
- Class 41 Ridden Open Light/Heavyweight Cob.** Mare or Gelding. Four years old and over. *This class includes Maxi Cobs*  
Riders to have attained their 16th birthday by 1st January in the current year.

**CHAMPIONSHIP (ch13): 1st & 2nd placed exhibits from classes 38 – 41 to compete for the 2020 SWPA Ridden Light Horse of the Year Silver Salver. Kindly Donated by the ROSEDALE STUD Mr & Mrs Partridge.**

### Championship 'X1'.

- Class 42 Ridden X Race Horse.** Stallion, Mare or Gelding. Four years old and over. The equine MUST have raced either on the flat, over jumps or point-to-point. To be judged on the suitability to compete in all disciplines.  
Riders to have attained their 15th birthday before 1st January in the current year. (See Rules for Ridden Stallions)
- The winner to receive a sash kindly donated by Angela Dark***

### Championship 'W1'.

- Class 43 Ridden World Breeds.** Stallion, Mare or Gelding. Four years old and over. Rider any age. (See Rules for Ridden Stallions)  
(Excluding British Native Breeds, M&M Part Breds, Pure, Part Bred & Anglo Arabs)

### Championship 'P1'.

- Class 44 Ridden Moorland & Hill Bred.** Stallion, Mare or Gelding. Four years old and over. Rider any age. (See Rules for Ridden Stallions)  
(Exhibits must be Pure Bred Natives, but not eligible to be shown in Mountain & Moorland classes)

### Championship 'C2'.

- Class 45 Ridden Traditional Cob.** Stallion, Mare or Gelding. Four years old and over. Riders any age. (See Rules for Ridden Stallions)

**CHAMPIONSHIP (ch16): 1st & 2nd placed exhibits from classes 42 – 45 to compete for the 2020 SWPA Mixed Breeds of the Year Championship.**

### Championship 'R2'

#### Method of Judging: -

Phase One: Performance & Freestyle Show 60 marks.

Phase Two: Conformation / Type and Suitability for Dressage 40 marks.

The individual Freestyle Show to include, Halt, Walk on a long rein, Ordinary trot serpentine, Extended trot on the diagonal, Canter serpentine with change of lead, Extended canter on the diagonal. Not to exceed 2 minutes.

- Class 46 Ridden Competition Mountain & Moorland.** Stallion, Mare or Gelding. Four years old and over. Registered in their respective Pure Breed Society Stud Books. Rider any age. (See Rules for Ridden Stallions)

### Championship 'R1'

#### Method of Judging: -

Phase One: Performance & Freestyle Show 60 marks.

Phase Two: Conformation / Type and Suitability for Dressage 40 marks.

The individual Freestyle Show to include, Halt, Walk on a long rein, Ordinary trot serpentine, Extended trot on the diagonal, Canter serpentine with change of lead, Extended canter on the diagonal. Not to exceed 2 minutes.

- Class 47 Ridden Competition Pony.** Stallion, Mare or Gelding. Four years old and over. Not exceeding 148cms. Rider any age.  
(See rules for Ridden Stallions)

- Class 48 Ridden Competition Horse.** Stallion, Mare or Gelding. Four years old and over. Exceeding 148cms. Rider any age.  
(See rules for Ridden Stallions)

**CHAMPIONSHIP (ch12): 1st & 2nd placed exhibits from classes 46– 48 to compete for the 2019 SWPA Ridden Competition Horse/Pony of the Year Championship.**

**SASHES IN THIS RIDDEN LIGHT HORSE CHAMPIONSHIP ARE KINDLY SPONSORED BY**  
**TRANSCAL**

### **RIDDEN LIGHT HORSE / PONY CHAMPIONSHIP (ch17):**

**Winners of Champion & Reserve Champion Rosettes from classes 31 – 48 to compete for the 2020 SWPA Open Ridden Light Horse/Pony of the Year Sarah Partridge Memorial Trophy. Kindly Donated by Mr & Mrs L PARTRIDGE.**

**Sashes for Champion & Reserve Champion**

**CHAMPION & RESERVE to go forward to the Supreme Ridden of Show Championship to be held during Saturday night Evening Performance.**

***Please remember it is exhibitor's responsibility to be in the correct class and on time. Exhibitors are also expected to wear the correct riding equipment as per the show rules.***  
***Thank you for your co-operation, Richard Broad (chairman)***

**ON-LINE PRE-ENTRIES MUST BE RECEIVED BY MIDNIGHT ON 28 AUGUST 2020**  
**[www.showingscene.com](http://www.showingscene.com)**

**Entries after this date, and on the day entries at extra cost**



## MOUNTAIN & MOORLAND IN-HAND CLASSES

**ALL ROSETTES IN CLASSES 50 - 61 ARE KINDLY SPONSORED BY PONDAROSA STUD**

### Championship 'M'

*Please Note: All Ponies MUST be registered in their respective Pure Breed Society Stud Books.*

**Class 50** Miniature Shetland, Youngstock. Yearling, Two & Three year old, not exceeding 34" (*Special Rosette to Best Yearling*)

**Class 51** Standard Shetland, Exmoor and Dartmoor. Youngstock. Yearling, Two & Three year old. (*Special Rosette to Best Yearling*)

**Class 52** Welsh sections A & B. Youngstock. Yearling, Two & Three year old. (*Special Rosette to Best Yearling*)

**Class 53** Welsh sections C & D. Youngstock. Yearling, Two & Three year old. (*Special Rosette to Best Yearling*)

**Class 54** New Forest, Connemara, Dales, Fell and Highland. Youngstock. Yearling, Two & Three year old. (*Special Rosette to Best Yearling*)

**JUNIOR CHAMPIONSHIP (ch25): 1st & 2nd placed exhibits from classes 50 – 54 to compete.**

**Class 55** Miniature Shetland. Four and over. Not exceeding 34" (*Special Best Gelding*)

**Class 56** Standard Shetland. Four and over. (*Special Best Gelding*)

**Class 57** Exmoor and Dartmoor. Four and over. (*Special Best Gelding*)

**Class 58** Welsh sections A & B. Four and over. (*Special Best Gelding*)

**Class 59** Welsh sections C & D. Four and over. (*Special Best Gelding*)

**Class 60** New Forest, Connemara. Four and over. (*Special Best Gelding*)

**Class 61** Dales, Fell and Highland. Four and over. (*Special Best Gelding*)

**SENIOR CHAMPIONSHIP (ch26): 1st & 2nd placed exhibits from classes 55 – 61 to compete.**

**SASHES IN THIS IN-HAND MOUNTAIN & MOORLAND CHAMPIONSHIP ARE KINDLY SPONSORED BY PONDAROSA STUD**

### **MOUNTAIN & MOORLAND IN-HAND CHAMPIONSHIP (ch27):**

**Champion & Reserve from the Junior & Senior sections to compete for the 2020 SWPA Pondarosa Stud In-Hand Mountain & Moorland of the year Championship.**

**Sashes for Champion & Reserve Champion**

**CHAMPION & RESERVE to go forward to the In-Hand Supreme Championship of Show to be held during Saturday night Evening Performance.**



**Pondarosa Welsh D  
Stud  
Exeter, Devon**

*Sponsors of the*

**SWPA Mountain &  
Moorland  
In-Hand & Ridden Series**

## MOUNTAIN & MOORLAND RIDDEN CLASSES

### ALL ROSETTES IN CLASSES 62 – 66 ARE KINDLY SPONSORED BY PONDAROSA STUD

#### Championship 'M1'

*Please Note: - ALL Ridden Mountain & Moorland Classes WILL be split further according to entries received.*

*ALL exhibits MUST be registered in their respective PURE Breed Society Stud Books. Riders any age (See Rules for Ridden Stallions)*

**Class 62 Ridden Shetland, Exmoor, Dartmoor.** Stallion, Mare or Gelding. Four years old and over. (*Rider any age, see Rules for Ridden Stallions*)

**Class 63 Ridden Welsh Sections A & B.** Stallion, Mare or Gelding. Four years old and over.

**Class 64 Ridden New Forest & Connemara.** Stallion, Mare or Gelding. Four years old and over.

**Class 65 Ridden Dales, Fell & Highland.** Stallion, Mare or Gelding. Four years old and over.

**Class 66 Ridden Welsh Sections C & D.** Stallion, Mare or Gelding. Four years old and over.

### SASHES IN THIS RIDDEN MOUNTAIN & MOORLAND CHAMPIONSHIP ARE KINDLY SPONSORED BY PONDAROSA STUD

#### MOUNTAIN & MOORLAND RIDDEN CHAMPIONSHIP (ch28):

**First & Second placed exhibits from classes 62 – 66 to compete for the**

**2020 SWPA Pondarosa Stud Ridden Mountain & Moorland of the year Championship.**

**Sashes for Champion & Reserve Champion**

**CHAMPION & RESERVE to go forward to the Supreme Ridden of Show Championship to be held during Saturday night Evening Performance.**

## JUNIOR RIDDEN CLASSES

### ROSETTES IN CLASSES 70 – 71 ARE KINDLY SPONSORED BY BARROWHILL STUD

#### Championship 'J'

**Class 70 M&M Junior Ridden Small Breeds.** Mare or Gelding. Four years old and over registered in the respective Pure Breed Society Stud Books of Shetland, Dartmoor, Exmoor, Welsh A & B. Riders not to have attained their 14th birthday before 1st January in the current year.

**Class 71 M&M Junior Ridden Large Breeds.** Mare or Gelding. Four years old and over registered in the respective Pure Breed Society Stud Books of New Forest, Connemara, Dales, Fell, Highland, Welsh C & D. Riders not to have attained their 18th birthday before 1st January in the current year.

**CHAMPIONSHIP (ch35): 1st & 2nd placed ponies from classes 70 – 71 to compete for the 2020 SWPA Barrowhill Stud Junior Ridden Mountain & Moorland Championship.**

#### Championship 'J1'

**Class 72 Junior Open Ridden.** (excluding Mountain & Moorland). Mare or Gelding. Four years old and over. Not exceeding 138cms. Riders not to have attained their 14th birthday before 1st January in the current year.

**Class 73 Junior Open Ridden.** (excluding Mountain & Moorland). Mare or Gelding. Four years old and over. Exceeding 138cms. Riders not to have attained their 18th birthday before 1st January in the current year.

**CHAMPIONSHIP (ch36): 1st & 2nd placed exhibits from classes 72 – 73 to compete for the 2020 SWPA Junior Open Ridden of the Year Championship.**

#### JUNIOR RIDDEN CHAMPIONSHIP (ch37):

**Champion & Reserve from the Mountain & Moorland & Open sections to compete for the 2020 SWPA Junior Ridden of the year Championship.**

**Sashes for Champion & Reserve Champion**

## RIDDEN PART BRED CLASSES

### THE PART BRED RIDDEN SERIES ALL ROSETTES IN CLASSES 74 – 82 ARE KINDLY SPONSORED BY SNUGGY HOODS

#### Championship 'G1'

**Class 74 Open Ridden Show Pony.** Mare or Gelding. Four years old and over. Not exceeding 148cms. (*Riders to be suitable size for pony ridden*)

#### Championship 'H1'

**Class 75 Ridden Show Hunter Pony.** Mare or Gelding. Four years old and over. Not exceeding 133cms. (*Riders to be suitable size for pony ridden*)

**Class 76 Ridden Show Hunter Pony.** Mare or Gelding. Four years old and over. Exceeding 133cms but not exceeding 153cms. (*Riders to be suitable size for pony ridden*)

#### Championships 'G2' 'H2'

**Class 77 Ridden Intermediate Show Riding & Show Hunter Types.** Mare or Gelding. Four years old and over. Exceeding 146cms but not exceeding 158cms. (*Riders to be suitable size for intermediate ridden*)

**CHAMPIONSHIP (ch23): 1st & 2nd placed exhibits from classes 74 – 77 to compete for the 2020 SWPA SNUGGY HOODS Ridden Show Pony / Show Hunter Pony / Intermediate of the year Championship.**

#### Championship 'F1'

**Class 78 Ridden M&M (Non Welsh) Part Bred.** Stallion, Mare or Gelding. Four years old and over. Rider any age. (*See Rules for Ridden Stallions*)

**Class 79 Ridden Welsh Part Bred.** Stallion, Mare or Gelding. Four years old and over. Rider any age. (*See Rules for Ridden Stallions*)

**CHAMPIONSHIP (ch10): 1st & 2nd placed exhibits from classes 78 – 79 to compete for the 2020 SWPA SNUGGY HOODS Ridden Mountain & Moorland Part Bred of the Year Championship.**

**PLEASE REMEMBER TO MAKE SURE YOU HAVE LONG ENOUGH EXTENSION LEADS IF YOU REQUIRE ELECTRIC HOOK UPS**



### Championship 'A1'

**Class 80 Ridden Part Bred & Anglo Arab.** Stallion, Mare or Gelding. Four years old and over. Not exceeding 148cms.  
Rider any age. (See rules for Ridden Stallions)

**Class 81 Ridden Part Bred & Anglo Arab.** Stallion, Mare or Gelding. Four years old and over. Exceeding 148cms. Rider any age.  
(See rules for Ridden Stallions)

**Class 82 Ridden Pure Bred Arab.** Stallion, Mare or Gelding Four years old and over. Rider any age. (See Rules for Ridden Stallions)

**CHAMPIONSHIP (ch11): 1st & 2nd placed exhibits from classes 80 – 82 to compete for the 2020 SWPA SNUGGY HOODS Ridden Pure, Part Bred & Anglo Arab of the Year Championship.**

**SASHES IN THIS PART BRED RIDDEN CHAMPIONSHIP ARE KINDLY SPONSORED BY SNUGGY HOODS**

### **RIDDEN PART BRED CHAMPIONSHIP (ch24):**

**Winners of Champion & Reserve Champion Rosettes from classes 74 – 82 to compete for the sections to compete for the 2020 SWPA Ridden Part Bred of the Year Championship.**

**Sashes for Champion & Reserve Champion**

**CHAMPION & RESERVE to go forward to the Supreme Ridden of Show Championship to be held during Saturday night Evening Performance.**



**snuggy hoods**  
THE WORLD'S BEST HORSE HOODS

BY APPOINTMENT  
TO HER MAJESTY THE QUEEN  
SUPPLIER OF HORSE CLOTHING  
SNUGGY HOODS LTD  
WILTSHIRE

NEW FOR 2019!  
MESH EYE  
COVERAGE

**INSECT/FLY PROTECTION - SWEET ITCH PREVENTION  
SHOW PREPARATION - ALLERGIES - SENSITIVE SKIN**

**WE'VE GOT IT COVERED!**

web: [www.snuggyhoods.com](http://www.snuggyhoods.com) email: [sales@snuggyhoods.com](mailto:sales@snuggyhoods.com)

## **Snuggy Hoods**

Click [Here](http://www.snuggyhoods.com) to visit their web site

*Sponsors of the*

**SWPA Mini Ridden, Ridden Show Pony, Ridden Hunter Pony,  
Ridden Intermediates & Ridden Part Breds**

## MINI RIDDEN CLASSES

### THE MINI SERIES AND ALL ROSETTES IN CLASSES 85 - 90 ARE KINDLY SPONSORED BY SNUGGY HOODS

#### Championship 'K a'

**Class 85 Open Lead Rein Pony.** Mare or Gelding. Four years old and over not exceeding 122cms. Riders not to have attained their 8th birthday before 1st January in the current year. To be led by an attendant, and shown in a Snaffle Bridle. Lead Rein to be attached to the noseband only, and held in the Leader's outside hand.

**Class 86 Open First Ridden Pony.** Mare or Gelding. Four years old and over not exceeding 122cms. Riders not to have attained their 10th birthday before 1st January in the current year. To be shown in a Snaffle Bridle.

**CHAMPIONSHIP (ch31): 1st & 2nd placed ponies from classes 85 – 86 to compete for the 2020 SWPA SNUGGY HOODS Mini Ridden Show Pony of the Year.**

#### Championship 'K b'

**Class 87 Show Hunter Lead Rein.** Mare or Gelding. Four years old and over, not exceeding 122cms. Riders not to have attained their 9th birthday before 1st January in the current year. To be led by an attendant, and shown in a Snaffle Bridle. Lead Rein to be attached to the noseband only, and held in the Leader's outside hand.

**Class 88 Show Hunter First Ridden.** Mare or Gelding. Four years old and over, not exceeding 122cms. Riders not to have attained their 10th birthday before 1st January in the current year. To be shown in a Snaffle Bridle.

**CHAMPIONSHIP (ch32): 1st & 2nd placed ponies from classes 87 – 88 to compete for the 2020 SWPA SNUGGY HOODS Mini Ridden Show Hunter Pony of the Year.**

#### Championship 'K c'

**Class 89 M&M Lead Rein.** Mare or Gelding. Four years old and over not exceeding 122cms. Registered in the respective Pure Breed Society Stud Books of Shetland, Dartmoor, Exmoor, New Forest, Welsh A & B. Riders not to have attained their 9th birthday before 1st January in the current year. To be led by an attendant and shown in a Snaffle Bridle. Lead Rein to be attached to the noseband only, and held in the Leader's outside hand.

**Class 90 M&M First Ridden.** Mare or Gelding. Four years old and over not exceeding 128cms. Registered in the respective Pure Breed Society Stud Books of Shetland, Dartmoor, Exmoor, New Forest, Welsh A & B. Riders not to have attained their 12th birthday before 1st January in the current year. To be shown in a Snaffle Bridle.

**CHAMPIONSHIP (ch33): 1st & 2nd placed ponies from classes 89 – 90 to compete for the 2020 SWPA SNUGGY HOODS Mini Ridden Mountain & Moorland Pony of the Year**

### SASHES IN THIS MINI RIDDEN CHAMPIONSHIP ARE KINDLY SPONSORED BY SNUGGY HOODS

#### MINI RIDDEN CHAMPIONSHIP

**Champion & Reserve from the Show Pony, Show Hunter Pony & Mountain & Moorland sections to compete. This championship will take place in the All Weather Arena during the 'Evening Performance' on Saturday. EVENING DRESS CODE**

## YOUNG HANDLER CLASSES

#### Championship 'Y'

**To be judged on the child's ability to present and control the pony whilst in the ring.**

**Mare or Gelding. NO STALLIONS OR COLTS. Handlers age as at 1<sup>st</sup> January in the current year.**

**Class 91 Young Handler.** Handlers to have attained their 4th birthday, but not to have attained their 8th birthday before 1st January in the current year.

**Class 92 Young Handler.** Handlers to have attained their 8th birthday, but not to have attained their 12th birthday before 1st January in the current year.

**Class 93 Young Handler.** Handlers to have attained their 12th birthday, but not to have attained their 15th birthday before 1st January in the current year.

**Class 94 Young Handler.** Handlers to have attained their 15th birthday before 1st January in the current year, but not to have attained their 18th birthday before 1st January in the current year.

#### YOUNG HANDLER CHAMPIONSHIP (ch30):

**First & Second placed exhibits from classes 91 – 94 to compete for the 2020 SWPA Young Handler of the year Championship.**

**Sashes for Champion & Reserve Champion**

## **The SWPA Trucksmith Ltd Supreme Mini Ridden Championship**

**Qualifiers for this competition will be held at all SWPA shows.**

**The Champion & Reserve from the qualifying classes will be invited to go forward to the final on Saturday of the 2019 SWPA Championship Show during the 'Evening Performance'**

**There will be a prize fund for this competition of over £350 with prizes down to sixth place**

**First Prize £100 Second Prize £80 Third Prize £60 Fourth Prize £50 Fifth Prize £40 Sixth Prize £30**

## NOVICE RIDDEN CLASSES

**PLEASE NOTE: SNAFFLE BRIDLES ONLY will be permitted in ALL Novice Ridden classes.**

**Not to have been placed first in the type of class entered before 1<sup>st</sup> January in the current year.**

*(Please see list of permitted bits listed in the accompanying leaflet with this schedule or see the list posted outside the Secretary's Office)*

### **Championship 'N4 (a)'**

**Class 100 Novice Lead Rein.** Any type. Mare or Gelding. Four years old and over, **not exceeding 122cms.**

(Mountain & Moorland ponies must be registered in their respective Pure Breed Society Stud Books) Riders not to have attained their 8th birthday if riding Show/Riding or Show Hunter type pony, or 9th birthday if riding an M&M type pony, before 1st January in the current year.

To be shown in a SNAFFLE BRIDLE. Lead Rein to be attached to the noseband only, and held in the Leader's outside hand.

### **Championship 'N4 (b)'**

**Class 101 Novice First Ridden.** Any type. Mare or Gelding. Four years old and over, **not exceeding 122cms.**

(Mountain & Moorland ponies **not exceeding 128cms** and must be registered in their respective Pure Breed Society Stud Books)

Riders not to have attained their 10th birthday if riding Show/Riding or Show Hunter type pony or 12th birthday if riding an M&M type pony before the 1st January in the current year. To be shown in a SNAFFLE BRIDLE.

### **Championship 'N'**

**Class 102 Novice Ridden Small Breeds.** Stallion, Mare or Gelding. Four years old and over. Registered in the respective Pure Breed Society Stud Books of Shetland, Dartmoor, Exmoor, Welsh sections A & B. Riders any age. *(See Rules for Ridden Stallions)*

**Class 103 Novice Ridden Large Breeds.** Stallion, Mare or Gelding. Four years old and over. Registered in the respective Pure Breed Society Stud Books of New Forest, Connemara, Fells, Dales, Highland, Welsh sections C & D. Riders any age. *(See Rules for Ridden Stallions)*

### **Championship 'N1' 'N2'**

**Class 104 Novice Ridden Show Pony / Show Hunter Pony / Intermediate.** Mare or Gelding. Four years old and over.

Show Pony not exc. 148cms, Show Hunter Pony not exc. 153cms, Intermediate, exc. 146cms but not exc. 158cms

*(Riders to be suitable size for equine ridden)*

### **Championship 'N3'**

**Class 105 Novice Ridden Hack / Riding Horse / Hunter / Cob.** Mare or Gelding. Four years old and over.

Hack not to exceed 160cms. Riding Horses to exceed 148cms. Cob to exceed 148cms but not to exceed 155cms. Riders to have attained their 15th birthday before 1st January in the current year.

Hunter to exceed 148cms. Riders to have attained their 16th birthday before 1st January in the current year.

## **NOVICE RIDDEN CHAMPIONSHIP (ch38):**

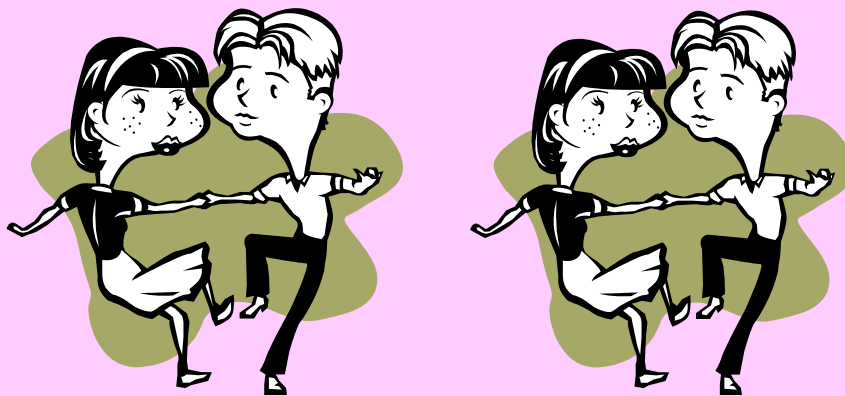
**First & Second placed exhibits from classes 100 – 105 to compete for the 2020 SWPA Novice Ridden of the year Championship.**

**Sashes for Champion & Reserve Champion**

*Live Entertainment in the Restaurant*

***Young at Heart***

***Saturday night- from 8pm Fully Licensed Bar & Food available***



## **CLOSURE OF CLASSES:**

**AN IN-HAND CLASS WILL BE DEEMED CLOSED TO LATE ENTRANTS WHEN THE FIRST EXHIBIT BEGINS IT'S INITIAL TROT ROUND.**

**A RIDDEN CLASS WILL BE DEEMED CLOSED TO LATE ENTRANTS WHEN THE EXHIBITORS BEGIN THE INITIAL TROT ROUND**



# South West Pony Association's

## 'Star for the Future'

### 'STAR FOR THE FUTURE' RIDDEN CLASSES

**THIS SERIES AND ALL ROSETTES IN CLASSES 106 - 121  
ARE KINDLY SPONSORED BY COOPER GROUNDWORKS LTD**

#### **ALL 'STAR FOR THE FUTURE' CLASSES, 106 – 121 Ponies & Horses SNAFFLE BRIDLES ONLY**

Exhibitors **MUST** have pre-qualified for this competition at one of the SWPA 2020 shows, or qualified at one of the assigned classes during Thursday & Friday of this Championship Show.

Pony/Horse Rider Combinations not to have been placed first in the ridden category entered, before 1st October 2019.

**This rule will be strictly applied !!**

**Please Note: Classes 106 – 107 will be marked as follows: -**

Phase One: Performance & Freestyle Show 60 marks.

The individual Freestyle Show to include, Halt, Walk on a long rein, Ordinary trot serpentine, Extended trot on the diagonal. Not to exceed 2 minutes. Competitors will be marked out of 15 points for each phase.

Phase Two: Conformation 40 marks.

#### **LEAD REIN CLASSES**

**Class 106 Open / Show Hunter Leading Rein Pony.** Mare or Gelding. Four years old and over, not exceeding 122cms. Riders not to have attained their 8th birthday for Open Type or 9th birthday for Show Hunter Type before 1st January in the current year. To be led by an attendant, and shown in a SNAFFLE BRIDLE, the Lead Rein to be attached to the noseband only, and held in the Leader's outside hand.

**Class 107 Mountain & Moorland Leading Rein Pony.** Mare or Gelding. Four years old and over, not exceeding 122cms. Registered in the respective Pure Breed Society Stud Books of Shetland, Dartmoor, Exmoor, New Forest, Welsh A and B. Riders not to have attained their 9th birthday before 1st January in the current year. To be led by an attendant and shown in a SNAFFLE BRIDLE, the Lead Rein to be attached to the noseband only, and held in the Leader's outside hand.

**Please Note: Classes 108 - 121 will be marked as follows: -**

Phase One: Performance & Freestyle Show 60 marks.

The individual Freestyle Show to include, Halt, Walk on a long rein, Ordinary trot serpentine, Extended trot on the diagonal, Canter serpentine with change of lead, Extended canter on the diagonal. Not to exceed 2 minutes. Competitors will be marked out of 10 points for each phase.

Phase Two: Conformation 40 marks.

#### **FIRST RIDDEN CLASSES**

**Class 108 Open / Show Hunter First Ridden Pony.** Mare or Gelding. Four years old and over, not exceeding 122cms. Riders not to have attained their 10th birthday before 1st January in the current year. To be shown in a SNAFFLE BRIDLE.

**Class 109 Mountain & Moorland First Ridden Pony.** Mare or Gelding. Four years old and over, not exceeding 128cms. Registered in the respective Pure Breed Society Stud Books of Shetland, Dartmoor, Exmoor, New Forest, Welsh A or B. Riders not to have attained their 12th birthday before 1<sup>st</sup> January in the current year. To be shown in a SNAFFLE BRIDLE.

#### **MOUNTAIN & MOORLAND RIDDEN CLASSES**

**Class 110 M&M Junior Ridden.** Mare or Gelding. Four years old and over. Registered in their respective Pure Breed Society Stud Books. Riders not to have attained their 14th birthday for Small Breeds and 18th birthday for Large Breeds before 1st January in the current year. To be shown in a SNAFFLE BRIDLE.

**Class 111 M&M Ridden Small Breeds.** Stallion, Mare or Gelding. Four years old and over. Registered in the respective Pure Breed Society Stud Books of Shetland, Dartmoor, Exmoor, Welsh Sections A and B. Riders any age. (*See Rules for Ridden Stallions*) To be shown in a SNAFFLE BRIDLE.

**Class 112 M&M Ridden Large Breeds.** Stallion, Mare or Gelding. Four years old and over. Registered in the respective Pure Breed Society Stud Books of New Forest, Connemara, Dales, Fells, Highland, Welsh Sections C and D. Riders any age. (*See Rules for Ridden Stallions*) To be shown in a SNAFFLE BRIDLE.

#### **OPEN RIDDEN CLASSES**

**Class 113 Junior Open Ridden.** (excluding Mountain & Moorland). Mare or Gelding. Four years old and over. Riders not to have attained their 14th birthday for equines not exceeding 138cms and 18th birthday for equines exceeding 138cms before 1st January in the current year. To be shown in a SNAFFLE BRIDLE.

**Class 114 Ridden Show Pony / Show Hunter Pony / Intermediate.** Mare or Gelding. Four years old and over. Show Pony not exceeding 148cms. Show Hunter Pony not exceeding 153cms. Intermediate exceeding 146cms, not exceeding 158cms. (*Riders to be suitable size for equine ridden*) To be shown in a SNAFFLE BRIDLE.

**Class 115 Ridden Part Bred Mountain & Moorland.** Stallion, Mare or Gelding. Four years old and over. Riders any age. (*see rules for Ridden Stallions*) To be shown in a SNAFFLE BRIDLE.

**Class 116 Ridden Pure, Part Bred & Anglo Arab.** Stallion, Mare or Gelding. Four years old and over. Riders any age. (*see rules for Ridden Stallions*) To be shown in a SNAFFLE BRIDLE.

**Class 117 Ridden Competition Pony / Horse.** Stallion, Mare or Gelding. Four years old and over. Ponies not exceeding 148cms, Horses exceeding 148cms. Riders any age. (*see rules for Ridden Stallions*) To be shown in a SNAFFLE BRIDLE.

## South West Pony Association

2019 Family Registration £30 which includes all equines owned by the family

Register on-line at [www.showingscene.com](http://www.showingscene.com)

or Ask the Secretary for details

**Class 118 Ridden Hack / Riding Horse.** Mare or Gelding. Four year old and over.  
Hack not exceeding 160cms. Riders any age.  
Riding Horse exceeding 148cms. Riders to have attained their 15th birthday by 1st January in the current year.  
To be shown in a SNAFFLE BRIDLE.

**Class 119 Ridden Hunter.** Mare or Gelding. Four years old and over, exceeding 153cms.  
Riders to have attained their 16th birthday before 1st January in the current year. To be shown in a SNAFFLE BRIDLE.

**Class 120 Ridden Cob.** Mare or Gelding. Four years old and over.  
Riders to have attained their 15th birthday before 1st January in the current year. To be shown in a SNAFFLE BRIDLE.

**Class 121 Ridden Coloured.** Stallion, Mare or Gelding. Four years old and over. Riders any age. (*See Rules for Ridden Stallions*)  
To be shown in a SNAFFLE BRIDLE.

**'STAR FOR THE FUTURE' CHAMPIONSHIP (ch34): (PRELIMINARY JUDGING)**  
***First placed exhibits from classes 106 – 121 to compete.***

***The Final Placing Awards will take place in the All Weather Arena during the 'Evening Performance' on Saturday.***

#### **LEAD REIN WORKING HUNTER CLASSES**

### **THE LEAD REIN WORKING HUNTER SERIES ROSETTES & SASHES** **ARE KINDLY SPONSORED BY**

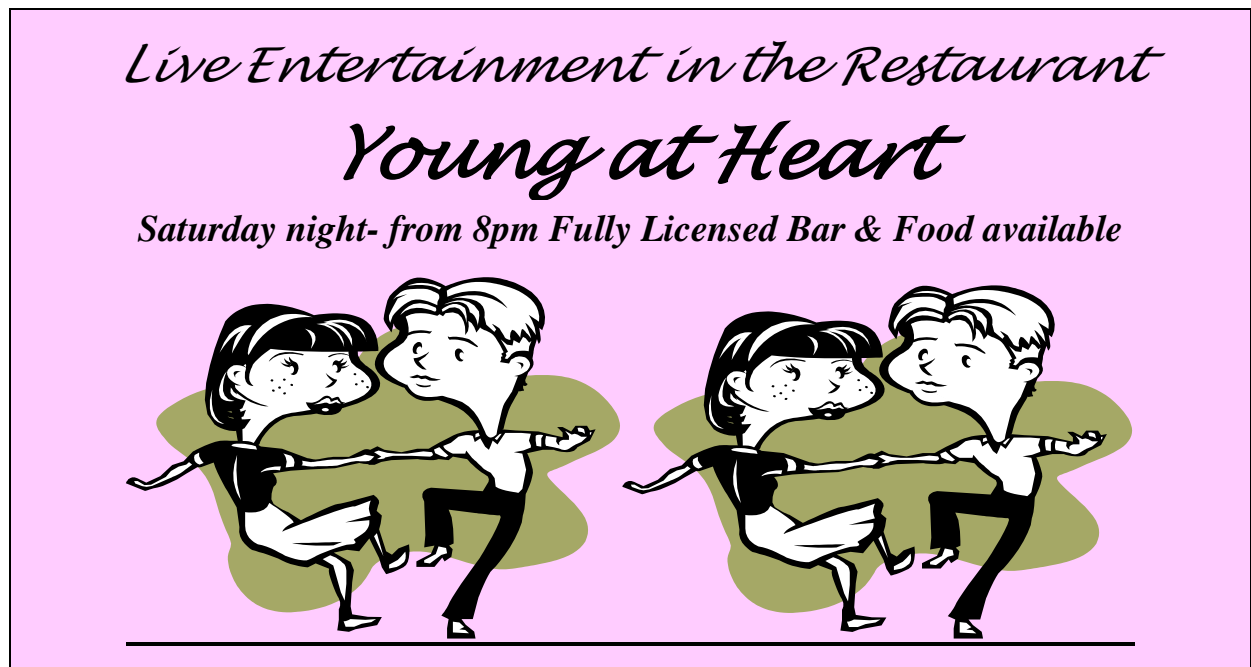
#### **Championship 'L d'**

**Class 125 Open Lead Rein WHP (exc. M&M).** Mare or Gelding. Four years old and over not exceeding 122cms.  
Riders not to have attained their 9th birthday before 1st January in the current year.  
To be shown in a SNAFFLE BRIDLE. The Lead Rein to be attached to the noseband only, and held in the Leader's outside hand.

#### **Championship 'L c'**

**Class 126 Mountain & Moorland Lead Rein WHP.** Mare or Gelding. Four years old and over, not exceeding 122cms.  
Registered with their respective Pure Breed Society Stud Books. Riders not to have attained their 9th birthday before 1st January in the current year. To be shown in a SNAFFLE BRIDLE. The Lead Rein to be attached to the noseband only, and held in the Leader's outside hand.

**LEAD REIN WORKING HUNTER PONY CHAMPIONSHIP (ch41):**  
***First & Second placed Ponies from classes 125 – 126 to compete for the 2020 SWPA Lead Rein Working Hunter Pony of the Year Championship.***  
***Sashes for Champion & Reserve Champion***



*Sponsors of the to be announced*

**SWPA Lead Rein, Cradle Stakes, Nursery Stakes, Mountain & Moorland  
& Open Working Hunter Series**

## **NOVICE WORKING HUNTER CLASSES**

**NOVICE RULES :** *Equines NOT to have been placed first in ANY Working Hunter Class before 1<sup>st</sup> January in the current year.*

**PLEASE NOTE: SNAFFLE BRIDLES ONLY will be permitted in ALL Novice Working Hunter classes.** *(Please see list of permitted bits listed in the accompanying leaflet with this schedule or see the list posted outside the Secretary's Office)*

### **Championship 'L2'**

**Class 127 Novice M&M Working Hunter. Exceeding 138cms.** Stallion, Mare or Gelding. Four years old and over registered in their respective Pure Breed Society Stud Books. Riders any age. *(See rules for Ridden Stallions)*

**Class 128 Novice M&M Working Hunter. Exceeding 122cms - Not Exceeding 138cms.** Stallion, Mare or Gelding. Four years old and over registered in their respective Pure Breed Society Stud Books. Riders any age. *(See Rules for Ridden Stallions)*

**Class 129 Novice M&M Working Hunter. Not Exceeding 122cms.** Stallion, Mare or Gelding. Four years old and over registered in their respective Pure Breed Society Stud Books. Riders any age. *(See Rules for Ridden Stallions)*

### **Championship 'L1'**

**Class 130 Novice Working Hunter Pony. Not Exceeding 133cms.** Mare or Gelding. Four years old and over.  
*(Riders to be suitable size for pony ridden)*

**Class 131 Novice Working Hunter Pony Exceeding 133cms - Not Exceeding 153cms.** Mare or Gelding. Four years old and over.  
*(Riders to be suitable size for pony ridden)*

### **Championship 'L1 a'**

**Class 132 Novice Working Hunter Horse / Hunter / Cob. Exceeding 148cms.** Mare or Gelding. Four years old and over. Riding Horse, Riders to have attained their 15th birthday, Hunter & Cob Riders to have attained their 16th birthday before 1st January in the current year.

## **NOVICE WORKING HUNTER CHAMPIONSHIP (ch43):**

***First & Second placed Exhibits from classes 127 – 132 to compete for the 2020 SWPA Novice Working Hunter Championship.***

***Sashes for Champion & Reserve Champion***

## **MINI OPEN WORKING HUNTER CLASSES**

### **THE MINI WORKING HUNTER SERIES ROSETTES & SASHES ARE KINDLY SPONSORED BY**

### **Championship 'L a'**

**Class 133 Cradle Stakes.** Mare or Gelding. Four years old and over, not exceeding 122cms.  
Riders not to have attained their 10th birthday before 1st January in the current year.

### **Championship 'L b'**

**Class 134 Nursery Stakes.** Mare or Gelding. Four years old and over not exceeding 133cms.  
Riders not to have attained their 12th birthday before 1st January in the current year.

### **Championship 'L 5'**

**Class 135 Mountain & Moorland Nursery Stakes.** Mare or Gelding. Four years old and over not exceeding 128cms. Registered in their respective Pure Breed Society Stud Books. Riders not to have attained their 12th birthday before 1st January in the current year.

## **MINI WORKING HUNTER PONY CHAMPIONSHIP (ch42):**

***First & Second placed exhibits from classes 133 – 135 to compete for the 2020 SWPA Mini Working Hunter Pony of the Year Championship.***

***Sashes for Champion & Reserve Champion***

***CHAMPION & RESERVE to go forward to the Supreme Working Hunter of Show Championship to be held during Saturday night Evening Performance.***

## **OPEN WORKING HUNTER CLASSES**

### **THE OPEN WORKING HUNTER SERIES ROSETTES & SASHES ARE KINDLY SPONSORED BY**

### **Championship 'L3'**

**Class 136 Open Working Hunter Pony. Not Exceeding 133cms.** Mare or Gelding. Four years old and over.  
*(Riders to be suitable size for pony ridden)*

**Class 137 Open Working Hunter Pony. Exceeding 133cms – Not Exceeding 153cms.**  
*(Riders to be suitable size for pony ridden)*

### **Championship 'L3 a'**

**Class 138 Open Working Hunter Horse / Hunter / Cob. Exceeding 148cms.** Mare or Gelding. Four years old and over. Riding Horse, Riders to have attained their 15th birthday, Hunter & Cob Riders to have attained their 16th birthday before 1st January in the current year.

## **OPEN WORKING HUNTER CHAMPIONSHIP (ch44):**

***First & Second placed exhibits from classes 136 – 138 to compete for the 2020 SWPA Open Working Hunter of the Year Championship.***

***Sashes for Champion & Reserve Champion***

***CHAMPION & RESERVE to go forward to the Supreme Working Hunter of Show Championship to be held during Saturday night Evening Performance.***

**PLEASE NOTE ALL GROOMS MUST DRESS APPROPRIATELY FOR A  
CHAMPIONSHIP SHOW  
AND WEAR A HAT WHILST IN THE RING**

## MOUNTAIN & MOORLAND OPEN WORKING HUNTER CLASSES

### THE MOUNTAIN & MOORLAND WORKING HUNTER SERIES ROSETTES & SASHES ARE KINDLY SPONSORED BY

#### Championship 'L4'

**Mountain & Moorland Working Hunter.** Stallion, Mare or Gelding. Four years old and over registered in their respective Breed Society Stud Books. Rider any age. (*See Rules for Ridden Stallions*)

**Class 139 Mountain & Moorland W/H. Exceeding 138cms.** Stallion, Mare or Gelding. Four years old and over registered in their respective Breed Society Stud Books. Rider any age. (*See Rules for Ridden Stallions*)

**Class 140 Mountain & Moorland W/H. Exceeding 122cms – Not Exceeding 138cms.** Stallion, Mare or Gelding. Four years old and over registered in their respective Breed Society Stud Books. Rider any age. (*See Rules for Ridden Stallions*)

**Class 141 Mountain & Moorland W/H. Not Exceeding 122cms.** Stallion, Mare or Gelding. Four years old and over registered in their respective Breed Society Stud Books. Rider any age. (*See Rules for Ridden Stallions*)

#### **MOUNTAIN & MOORLAND WORKING HUNTER CHAMPIONSHIP (ch45):**

**First & Second exhibits from classes 139 – 141 to compete for the 2020 SWPA Mountain & Moorland Working Hunter of the Year Championship.**

**Sashes for Champion & Reserve Champion**

*CHAMPION & RESERVE to go forward to the Supreme Working Hunter of Show Championship to be held during Saturday night Evening Performance.*

#### **SUPREME WORKING HUNTER OF THE SHOW CHAMPIONSHIP:**

**Champion & Reserve from the following sections: -**

**Mini Working Hunter, Open Working Hunter, & Mountain & Moorland Working Hunter.**

**This championship will take place in the All Weather Arena during the 'Evening Performance' on Saturday.  
EVENING DRESS CODE**



# Showing Scene

## Showing Made Easy

Showing Scene is a revolutionary show management system for equine events.

As a show organiser, build and manage your equine events at the click of a button, saving you time and effort - with no more forms to process. Class results are real-time allowing you to go paperless in the rings.

For competitors, we've made it very simple to enter online, with no need to re-enter details, card payments even available on show days and a ring side feature to see what's on in each ring.

For more information contact us at [www.showingscene.com](http://www.showingscene.com)

## South West Pony Association

2019 Family Registration £30 which includes all equines owned by the family

Register on-line at [www.showingscene.com](http://www.showingscene.com)

or Ask the Secretary for details

***Please remember it is exhibitor's responsibility to be in the correct class and on time.  
Exhibitors are also expected to wear the correct riding equipment as per the show rules.***

***Thank you for your co-operation, Richard Broad (chairman)***



## **SWPA RMB FESTIVAL CLASSES 201 - 333**

**PLEASE NOTE: You do not need to be registered with SWPA to enter classes 201 – 333**  
**If you qualify from any of the classes you will need to register to be able to enter the Championship Classes.**

### **OPEN IN-HAND CLASSES**

#### **SWPA OPEN IN-HAND 2020 CHAMPIONSHIP QUALIFIERS**

**Class 201 Riding Pony / Hunter Pony. Youngstock.** Yearling, Two & Three year old. (*Special Rosette to Best Yearling*)  
Riding Pony not to exceed 148cms at maturity. Hunter Pony not to exceed 153cms at maturity.

**Class 202 Riding Pony / Hunter Pony. Four and over.** Stallion, Mare or Gelding. Riding Pony not to exceed 148cms. Hunter Pony not to exceed 153cms.  
*The three highest placed exhibits not already qualified in classes 201 – 202 will qualify for the 2020 SWPA In-Hand Riding Pony / Hunter Pony Championship*

**Class 203 Pure, Anglo & Part Bred Arab. Youngstock.** Yearling, Two & Three year old. (*Special Rosette to Best Yearling*)

**Class 204 Pure, Anglo & Part Bred Arab. Four and over.** Stallion, Mare or Gelding.

*The three highest placed exhibits not already qualified in classes 203 – 204 will qualify for the 2020 SWPA In-Hand Pure, Anglo & Bred Championship*

**Class 205 Mountain & Moorland Part Bred. Youngstock.** Yearling, Two & Three year old. (*Special Rosette to Best Yearling*)

**Class 206 Mountain & Moorland Part Bred. Four and over.** Stallion, Mare or Gelding.

*The three highest placed exhibits not already qualified in classes 205 – 206 will qualify for the 2020 SWPA In-Hand Mountain & Moorland Part Bred Championship*

**Class 207 Pony to make Lead Rein Pony. Youngstock.** Yearling, Two and Three year old. (*Special Rosette to Best Yearling*)

**Class 208 Riding Horse / Hack. Youngstock.** Yearling, Two & Three year old. Riding Horse to exceed 148cms at maturity.  
Hack not to exceed 160cms at maturity. (*Special Rosette to Best Yearling*)

**Class 209 Riding Horse / Hack. Four and over.** Mare or Gelding. Riding Horse to exceed 148cms. Hack not to exceed 160cms.

*The three highest placed exhibits not already qualified in classes 208 – 209 will qualify for the 2020 SWPA In-Hand Riding Horse / Hack Championship*

**Class 210 Hunter Type. Any age.** To exceed 148cms at maturity. (*Special Rosette to Best Youngstock*)

*The three highest placed exhibits not already qualified in class 210 will qualify for the 2020 SWPA In-Hand Hunter Championship*

**Class 211 X Race Horse. Four and over.** Stallion, Mare or Gelding. The equine MUST have raced either on the flat, over jumps or point-to-point.  
To be judged on the suitability to compete in all disciplines.

*The three highest placed exhibits not already qualified in class 211 will qualify for the 2020 SWPA In-Hand X Race Horse Championship.*

*Note: Coloured classes to include, Skewbald, Piebald, Appaloosa, Spotted, Palomino and Dun.*

**Class 212 Coloured Pony. Any age.** Not to exceed 148cms at maturity. (*Special Rosette to Best Youngstock*)

**Class 213 Coloured Horse. Any age.** To exceed 148cms at maturity. (*Special Best Youngstock*)

*The three highest placed exhibits not already qualified in classes 208 – 209 will qualify for the 2020 SWPA In-Hand Coloured Horse/Pony Championship*

**Class 214 Competition Pony. Any age.** Not to exceed 148cms at maturity. (*Special Rosette to Best Yearling*)

**Class 215 Competition Horse. Any age.** To exceed 148cms at maturity.

*The three highest placed exhibits not already qualified in classes 214 – 215 will qualify for the 2020 SWPA In-Hand Competition Horse/Pony Championship*

**Class 216 Veteran Horse / Pony. Fifteen to Nineteen years old.**

**Class 217 Veteran Horse / Pony. Twenty years old and over.**

*The three highest placed exhibits not already qualified in classes 216 – 217 will qualify for the 2020 SWPA In-Hand Veteran Championship.*

**Class 218 Traditional Cob Type. Any age.** Unplaited. (*Special Rosette to Best Youngstock*)

*The three highest placed exhibits not already qualified in class 218 will qualify for the 2020 SWPA In-Hand Traditional Cob Championship*

**Class 219 Show Cob. Any age.** (*Special Rosette to Best Youngstock*)

*The three highest placed exhibits not already qualified in class 219 will qualify for the 2020 SWPA In-Hand Show Cob Championship*

**Class 220 Moorland or Hill Bred Ponies. Any age.** Exhibits must be Pure Bred, but not necessarily registered within their respective Breed Society.  
(*Special Rosette to Best Youngstock*) (Ponies eligible for the Mountain & Moorland classes, **cannot** enter this class)

*The three highest placed exhibits not already qualified in class 220 will qualify for the 2020 SWPA In-Hand Moorland & Hill Bred Championship*

**Class 221 World Breeds. Any age.** Colt, Stallion, Filly, Mare or Gelding. (*Special Rosette to Best Youngstock*)  
(Excluding British Native Breeds, M&M Part Breds, Pure, Part Bred & Anglo Arab)

*The three highest placed exhibits not already qualified in class 221 will qualify for the 2020 SWPA In-Hand World Breeds Championship*

**Class 222 Driving Type. Youngstock.** Colt, Filly or Gelding. (*Special Rosette to Best Yearling*)

**Class 223 Driving Type. Four and over.** Stallion, Mare or Gelding.

**Class 224 Miniature Horse. Any age.** (excluding Shetlands) Must be registered with their respective Miniature Horse Society.  
(*Special Rosette to Best Youngstock*)

*The three highest placed exhibits not already qualified in class 224 will qualify for the 2020 SWPA In-Hand Miniature Horse Championship*

**Class 225 Owner Bred. (exc. M&M). Any age.** (*Special Rosette to Best Youngstock*)

*The three highest placed exhibits not already qualified in class 225 will qualify for the 2020 SWPA Owner Bred Championship*

*The two highest placed handlers with a TSR In-Hand Card in classes 201 – 225 will qualify for the TSR In-Hand Championship on Saturday.*

#### **OPEN IN-HAND CHAMPIONSHIP (ch46):**

1st & 2nd placed exhibits from classes 201 – 225 to compete.

**CHAMPION & RESERVE to go forward to the SWPA RMB Festival In-Hand Championship during Thursday Evening Performance**

**PLEASE REMEMBER TO MAKE SURE YOU HAVE LONG ENOUGH  
EXTENSION LEADS IF YOU REQUIRE ELECTRIC HOOK UPS**



## **MOUNTAIN & MOORLAND IN-HAND CLASSES**

### **SWPA PONDAROSA STUD MOUNTAIN & MOORLAND IN-HAND 2020 CHAMPIONSHIP QUALIFIERS**

*All ponies in this section MUST be registered with their respective Pure Breed Societies.*

**Class 230 Miniature Shetland. Any age.** Not exceeding 34". (*Special Rosette to Best Youngstock*)

**Class 231 Standard Shetland, Exmoor, Dartmoor. Youngstock.** Yearling, Two and Three year old. (*Special Rosette to Best Yearling*)

**Class 232 Standard Shetland, Exmoor, Dartmoor. Four and over.** Stallion, Mare or Gelding.

**Class 233 Welsh sections A & B. Youngstock.** Yearling, Two and Three year old. (*Special Rosette to Best Yearling*)

**Class 234 Welsh sections A & B. Four and over.** Stallion, Mare or Gelding.

**Class 235 Welsh sections C & D. Youngstock.** Yearling, Two and Three year old. (*Special Rosette to Best Yearling*)

**Class 236 Welsh sections C & D. Four and over.** Stallion, Mare or Gelding.

**Class 237 New Forest, Connemara. Any age.** (*Special Rosette to Best Youngstock*)

**Class 238 Dales, Fell, Highland Any age.** (*Special Rosette to Best Youngstock*)

**Class 239 Mountain & Moorland Gelding. Any age.** (*Special Rosette to Best Youngstock*)

**Class 240 Mountain & Moorland Filly / Mare. Any age.** (*Special Rosette to Best Youngstock*)

**Class 241 Mountain & Moorland Colt / Stallion. Any age.** (*Special Rosette to Best Youngstock*)

*The three highest placed exhibits not already qualified in classes 230 – 241 will qualify for the 2020 SWPA PONDAROSA STUD Mountain & Moorland In-Hand Championship*

**Class 242 Owner Bred. M&M only. Any age.** (*Special Rosette to Best Youngstock*)

*The three highest placed exhibits not already qualified in class 242 will qualify for the 2020 SWPA In-Hand Owner Bred Championship*

*The two highest placed handlers with a TSR In-Hand Card in classes 230 – 242 will qualify for the TSR In-Hand Championship on Saturday.*

### **MOUNTAIN & MOORLAND IN-HAND CHAMPIONSHIP (ch50):**

**1st & 2nd placed exhibits from classes 230– 242 to compete.**

**CHAMPION & RESERVE to go forward to the SWPA RMB Festival In-Hand Championship during Thursday Evening Performance**

## **YOUNG HANDLER CLASSES**

### **SWPA YOUNG HANDLER 2019 CHAMPIONSHIP QUALIFIERS**

**MARES or GELDINGS ONLY. NO STALLIONS or COLTS.**

**Class 245 Young Handler, 4 – 7 years.** Handlers to have attained their 4<sup>th</sup> birthday, but not to have attained their 8<sup>th</sup> birthday before 1st January in the current year.

**Class 246 Young Handler, 8 – 11 years.** Handlers to have attained their 8<sup>th</sup> birthday, but not to have attained their 12<sup>th</sup> birthday before 1<sup>st</sup> January in the current year.

**Class 247 Young Handler, 12 – 14 years.** Handlers to have attained their 12<sup>th</sup> birthday, but not to have attained their 15<sup>th</sup> birthday before 1<sup>st</sup> January in the current year.

**Class 248 Young Handler 15 – 18 years.** Handlers to have attained their 15<sup>th</sup> birthday, but not to have attained their 18<sup>th</sup> birthday before 1st January in the current year.

*The first, second & third placed exhibitors in classes 245 – 248 will qualify for the 2020 SWPA Young Handler Championship.*

### **YOUNG HANDLER CHAMPIONSHIP (ch39):**

**1st & 2nd placed exhibitors from classes 245 – 248 to compete.**

# **South West Pony Association's “STAR FOR THE FUTURE”**

**Open to Novice Ridden Combinations Only**

(Pony/Horse Rider Combinations not to have been placed first in the ridden category entered, before 1st October 2019)

**The Categories are: -**

**M&M Lead Rein, M&M First Ridden**

**Open/Show Hunter Lead Rein, Open/Show Hunter First Ridden**

**Junior Ridden M&M, Junior Open Ridden,**

**Ridden M&M / Riding Pony / Show Hunter Pony / Intermediate,**

**Ridden Competition Type / M&M Part Bred / Arab / Cob / Hack / Riding Horse / Hunter / Coloured.**

The three highest placed Pony/Horse Rider Combinations, indicated by the rider wearing a white armband in the classes highlighted with ‘#’ at this show will qualify for the finals to be held at the SWPA Championship's. Qualification Cards to be signed in the ring by the Judge/Steward.

**Qualification Cards should be obtained in advance from the secretary**

## **CLOSURE OF CLASSES:**

**AN IN-HAND CLASS WILL BE DEEMED CLOSED TO LATE ENTRANTS WHEN THE FIRST EXHIBIT BEGINS ITS INITIAL TROT ROUND.**

**A RIDDEN CLASS WILL BE DEEMED CLOSED TO LATE ENTRANTS WHEN THE EXHIBITORS BEGIN THE INITIAL TROT ROUND**

## **MINI RIDDEN CLASSES**

### **SWPA NOVICE MINI RIDDEN 2020 CHAMPIONSHIP QUALIFIERS**

**Class 250 Novice Lead Rein. Pony NOT to have been placed first in any Lead Rein class before 1st January in the current year.**

- # Any type. Mare or Gelding. Four years old and over, not exceeding 122cms.  
(Mountain & Moorland ponies must be registered in their respective Pure Breed Society Stud Books)  
Riders not to have attained their, 7th birthday if riding Show/Riding type pony, 8th birthday if riding Show Hunter type pony or 9th birthday if riding an M&M type pony, before 1st January in the current year.  
To be shown in a SNAFFLE BRIDLE. The Lead Rein to be attached to the noseband only, and held in the Leader's outside hand.

**Class 251 Novice First Ridden. Pony NOT to have been placed first in any First Ridden class before 1st January in the current year.**

- # Any type. Mare or Gelding. Four years old and over, not exceeding 122cms.  
(Mountain & Moorland ponies must be registered in their respective Pure Breed Society Stud Books)  
Riders not to have attained their, 10th birthday if riding Show/Riding or Show Hunter type pony or 12th birthday if riding an M&M type pony before the 1st January in the current year. To be shown in a SNAFFLE BRIDLE.

**The three highest placed ponies not already qualified in classes 250 – 251 will qualify for the 2020 SWPA Novice Mini Ridden Championship.**

### **SWPA SNUGGY HOODS MINI RIDDEN 2020 CHAMPIONSHIP QUALIFIERS**

**Class 252 Leading Rein Pony of Show Hunter Type. Mare or Gelding. Four years old and over, not exceeding 122cms.**

- # Riders not to have attained their 9th birthday before 1st January in the current year.  
To be led by an attendant, and shown in a SNAFFLE BRIDLE, the Lead Rein to be attached to the noseband only, and held in the Leader's outside hand.

**Class 253 First Ridden Pony of Show Hunter Type. Mare or Gelding. Four years old and over, not exceeding 122cms.**

- # Riders not to have attained their 10th birthday before 1st January in the current year. To be shown in a SNAFFLE BRIDLE.

**Class 254 Open Leading Rein Pony. Mare or Gelding. Four years old and over not exceeding 122cms.**

- # Riders not to have attained their 8th birthday before 1st January in the current year.  
To be led by an attendant, and shown in a SNAFFLE BRIDLE, the Lead Rein to be attached to the noseband only, and held in the Leader's outside hand.

**Class 255 Open First Ridden Pony. Mare or Gelding. Four years old and over not exceeding 122cms.**

- # Riders not to have attained their 10th birthday before 1st January in the current year. To be shown in a SNAFFLE BRIDLE.

**Class 256 M&M Leading Rein. Mare or Gelding. Four years old and over, not exceeding 122cms, registered in the respective Pure Breed Society**

- # Stud Books of Shetland, Dartmoor, Exmoor, New Forest, Welsh A and B.  
Riders not to have attained their 9th birthday before 1st January in the current year.  
To be led by an attendant and shown in a SNAFFLE BRIDLE, Lead Rein to be attached to the noseband only, and held in the Leader's outside hand.

**Class 257 M&M First Ridden. Mare or Gelding. Four years old and over not exceeding 128cms, registered in the respective Pure Breed Society**

- # Stud Books of Shetland, Dartmoor, Exmoor, New Forest, Welsh A and B.  
Riders not to have attained their 12th birthday before 1st January in the current year. To be shown in a SNAFFLE BRIDLE.

**The three highest placed exhibits not already qualified in classes 252 – 257 will qualify for the 2020 SWPA SNUGGY HOODS Mini Ridden Championship**

**The first & second placed Riders in classes 252 – 257 will qualify for the TSR Ridden Championship on Saturday.**

**MINI RIDDEN CHAMPIONSHIP (ch48):**

**1st & 2nd placed ponies from classes 252 – 257 to compete.**

**CHAMPION & RESERVE to go forward to the SWPA RMB Festival Ridden Championship during the Thursday Evening Performance**

**The SWPA / Trucksmith Ltd Supreme Mini Ridden Championship Qualifier.**

**The Champion & Reserve Champion will qualify for the 2020 SWPA Trucksmith Ltd Supreme Mini Ridden Championship.**

*If the Champion and/or Reserve Champion have already qualified, the qualification may be passed down the line, but no lower than fourth place in the championship*

**The SWPA Supreme Mini Ridden Championship to be held during the Friday Evening Performance 4 September 2020**

## **OPEN RIDDEN CLASSES**

### **SWPA SNUGGY HOODS OPEN RIDDEN 2020 CHAMPIONSHIP QUALIFIERS**

**Class 258 Ridden Show Pony / Show Hunter Pony. Mare or Gelding. Four years old and over.**

- # Show Pony not exceeding 148cms. Show Hunter Pony not exceeding 153cms  
(Riders to be suitable size for pony ridden)

**The three highest placed exhibits not already qualified in class 258 will qualify for the 2020 SWPA SNUGGY HOODS Ridden Show Pony/Show Hunter Pony Championship**

**Class 259 Ridden Intermediate SRT & SHT. Mare or Gelding. Four years old and over, exceeding 146cms, but not exceeding 158cms**

- # (Riders to be suitable size for equine ridden)

**The three highest placed exhibits not already qualified in class 259 will qualify for the 2020 SWPA SNUGGY HOODS Ridden intermediate Championship**

### **SWPA OPEN RIDDEN 2020 CHAMPIONSHIP QUALIFIERS**

**Class 260 Ridden Part Bred Mountain & Moorland. Stallion, Mare or Gelding. Four years old and over.**

- # Riders any age. (See Rules for Ridden Stallions)

**The three highest placed exhibits not already qualified in class 260 will qualify for the 2020 SWPA Ridden Part Bred Mountain & Moorland Championship.**

**Class 261 Ridden Pure, Part Bred or Anglo Arab. Stallion, Mare or Gelding. Four years old and over.**

- # Riders any age. (See Rules for Ridden Stallions)

**The three highest placed exhibits not already qualified in class 261 will qualify for the 2020 SWPA Ridden Arab Championship.**

**Class 262 Ridden Riding Horse / Hack. Mare or Gelding. Four years old and over. Riding Horse exceeding 148cms. Hack not to exceed 160cms.**

- # Riders of Riding Horses to have attained their 15th birthday by 1st January in the current year.

**The three highest placed exhibits not already qualified in class 262 will qualify for the 2020 SWPA Ridden Riding Horse / Hack Championship.**

**Class 263 Ridden Light/Middle/Heavyweight Hunter. Mare or Gelding. Four years old and over.**

- # Riders to have attained their 16th birthday by 1st January in the current year.

**The three highest placed exhibits not already qualified in class 263 will qualify for the 2020 SWPA Ridden Hunter Championship.**

**Class 264 Ridden Open Light/Heavyweight Cob. Mare or Gelding. Four years old and over. This class includes Maxi Cobs**

- # Riders to have attained their 15th birthday before 1st January in the current year.

**The three highest placed exhibits not already qualified in class 264 will qualify for the 2020 SWPA Ridden Cob Championship.**

**Class 265 Ridden Traditional Cob.** (Unplaited) Stallion, Mare or Gelding. Four years old and over.

# Riders any age. (See Rules for Ridden Stallions)

**The three highest placed exhibits not already qualified in class 265 will qualify for the 2020 SWPA Ridden Traditional Cob Championship.**

*Note: Coloured class to include, Skewbald, Piebald, Appaloosa, Spotted, Palomino and Dun.*

**Class 266 Ridden Coloured Pony.** Stallion, Mare or Gelding, not exceeding 148cms. Four years old and over.

# Riders any age. (See Rules for Ridden Stallions)

**Class 267 Ridden Coloured Horse.** Stallion, Mare or Gelding, exceeding 148cms. Four years old and over.

# Riders any age. (See Rules for Ridden Stallions)

**The three highest placed exhibits not already qualified in classes 266 – 267 will qualify for the 2020 SWPA Ridden Coloured Championship.**

**Class 268 Ridden Competition Pony/Horse.** (excluding M&M) Stallion, Mare or Gelding. Four years old and over.

# Riders any age. (See Rules for Ridden Stallions)

**Class 269 Ridden Competition Mountain & Moorland.** Stallion, Mare or Gelding, Four years old and over, registered with their respective Breed Society

# Stud Books. (See Rules for Ridden Stallions)

**The three highest placed exhibits not already qualified in classes 268 - 269 will qualify for the 2020 SWPA Ridden Competition Horse/Pony Championship.**

*The first & second placed Riders in classes 258 – 269 will qualify for the TSR Ridden Championship on Saturday.*

**Class 270 Ridden X Race Horse.** Stallion, Mare or Gelding. Four years and over. The equine MUST have raced either on the flat, over jumps or point-to-point. To be judged on the suitability to compete in all disciplines.

Riders to have attained their 15th birthday before 1st January in the current year. (See Rules for Ridden Stallions)

**The three highest placed exhibits not already qualified in class 270 will qualify for the 2020 SWPA Ridden X Race Horse Championship.**

**Class 271 Ridden Pre-Veteran.** Fifteen to Nineteen years old. Stallion, Mare or Gelding. Riders any age. (See Rules for Ridden Stallions)

**Class 272 Ridden Veteran.** Twenty years old and over. Stallion, Mare or Gelding. Riders any age. (See Rules for Ridden Stallions)

**The three highest placed exhibits not already qualified in classes 271 – 272 will qualify for the 2020 SWPA Ridden Veteran Championship.**

*The first & second placed Riders in classes 258 – 272 will qualify for the TSR Welsh & South West Riders Championship on Saturday.*

**Class 273 Ridden Moorland or Hill Bred Ponies.** Exhibits must be Pure Bred, but not necessarily registered within their respective Breed Society. Any age. (Ponies eligible for the Mountain & Moorland classes, *cannot* enter this class)

**The three highest placed exhibits not already qualified in class 273 will qualify for the 2020 SWPA Ridden Moorland & Hill Bred Championship.**

**Class 274 Ridden World Breeds.** (Excluding British Native Breeds, M&M Part Breds, Pure, Part Bred & Anglo Arabs) Stallion, Mare or Gelding. Four years old and over. Riders any age. (See Rules for Ridden Stallions)

**The three highest placed exhibits not already qualified in class 274 will qualify for the 2020 SWPA Ridden World Breeds Championship.**

**OPEN RIDDEN CHAMPIONSHIP (ch47):**

**1st & 2nd placed exhibits from classes 258 – 274 to compete.**

**CHAMPION & RESERVE to go forward to the SWPA RMB Festival Ridden Championship during the Thursday Evening Performance**

### **NOVICE RIDDEN CLASSES**

**NOVICE RIDDEN CLASSES 275 – 279. Ponies not to have been placed first in ANY ridden class before 1st January in the current year.**

#### **SNAFFLE BRIDLES ONLY**

#### **SWPA NOVICE M&M RIDDEN 2020 CHAMPIONSHIP QUALIFIERS**

*All ponies in this section MUST be registered with their respective Pure Breed Societies.*

**Class 275 Novice Ridden Mountain & Moorland Small Breeds.** Stallion, Mare or Gelding. Four years old and over. Registered in the Pure Breed Society  
# Stud books of Shetland, Dartmoor, Exmoor, Welsh A & B. Riders any age. (see rules for Ridden Stallions)

To be shown in a SNAFFLE BRIDLE.

**Class 276 Novice Ridden Mountain & Moorland Large Breeds.** Stallion, Mare or Gelding. Four years old and over. Registered in the Pure Breed Society  
# Stud books of New Forest, Connemara, Dales, Fell, Highland, Welsh C & D. Riders any age. (see rules for Ridden Stallions)

To be shown in a SNAFFLE BRIDLE.

**The three highest placed exhibits not already qualified in classes 275 – 276 will qualify for the 2020 SWPA Novice Ridden Mountain & Moorland Championship.**

#### **SWPA NOVICE OPEN RIDDEN 2020 CHAMPIONSHIP QUALIFIERS**

**Class 277 Novice Ridden Riding Pony / Show Hunter Pony.** Stallion, Mare or Gelding. Four years old and over, not exceeding 153cms.

# (Riders to be suitable size for pony ridden)

To be shown in a SNAFFLE BRIDLE. (See Rules for Ridden Stallions)

**The two highest placed Riding Ponies and the two highest placed Show Hunter Ponies not already qualified in class 277 will qualify for the 2020 SWPA Novice Ridden Riding Pony / Show Hunter Pony Championship.**

**Class 278 Novice Ridden Intermediate.** Mare or Gelding. Four years old and over, exceeding 146cms but not exceeding 158cms.

# (Riders to be suitable size for equine ridden)

To be shown in a SNAFFLE BRIDLE.

**The three highest placed exhibits not already qualified in class 278 will qualify for the 2020 SWPA Novice Ridden Intermediate Championship.**

**Class 279 Novice Ridden Hack / Riding Horse / Hunter / Cob.** Mare or Gelding. Four years old and over.

# Hack not to exceed 160cms. Riding Horses to exceed 148cms.

Cob to exceed 148cms but not to exceed 155cms. Riders to have attained their 15th birthday before 1st January in the current year.

Hunter to exceed 148cms. Riders to have attained their 16th birthday before 1st January in the current year. To be shown in a SNAFFLE BRIDLE.

**The three highest placed exhibits not already qualified in class 279 will qualify for the 2020 SWPA Novice Ridden Hack / Riding Horse / Hunter / Cob Championship.**

**NOVICE RIDDEN CHAMPIONSHIP (ch49):**

**1st & 2nd placed exhibits from classes 275 – 279 to compete.**

***Please remember it is exhibitor's responsibility to be in the correct class and on time.  
Exhibitors are also expected to wear the correct riding equipment as per the show rules.  
Thank you for your co-operation, Richard Broad (chairman)***

## **MOUNTAIN & MOORLAND RIDDEN CLASSES**

### **SWPA PONDAROSA STUD MOUNTAIN & MOORLAND RIDDEN 2020 CHAMPIONSHIP QUALIFIERS**

*All ponies in this section MUST be registered with their respective Pure Breed Societies.*

**Class 280 Ridden Shetland, Exmoor, Dartmoor.** Stallion, Mare or Gelding. Four years old and over.

# Rider any age. (See rules for Ridden Stallions)

**Class 281 Ridden Welsh sections A & B.** Stallion, Mare or Gelding. Four years old and over.

# Rider any age. (See rules for Ridden Stallions)

**Class 282 Ridden Welsh sections C & D.** Stallion, Mare or Gelding. Four years old and over.

# Rider any age. (See rules for Ridden Stallions)

**Class 283 Ridden New Forest, Connemara.** Stallion, Mare or Gelding. Four years old and over.

# Rider any age. (See rules for Ridden Stallions)

**Class 284 Ridden Dales, Fell, Highland.** Stallion, Mare or Gelding. Four years old and over.

# Rider any age. (See rules for Ridden Stallions)

**The three highest placed exhibits not already qualified in classes 280 – 284 will qualify for the 2020 SWPA PONDAROSA STUD Mountain & Moorland Ridden Championship**

*The first & second placed Riders in classes 280 – 284 will qualify for the TSR Ridden Championship on Saturday.*

**MOUNTAIN & MOORLAND RIDDEN CHAMPIONSHIP (ch51):**

**1st & 2nd placed exhibits from classes 280 – 284 to compete.**

**CHAMPION & RESERVE to go forward to the SWPA RMB Festival Ridden Championship during the Thursday Evening Performance**

## **JUNIOR RIDDEN CLASSES**

### **SWPA OPEN JUNIOR RIDDEN 2020 CHAMPIONSHIP QUALIFIERS**

**Class 285 Junior Ridden Open, n/exc. 138cms. (exc M&M).** Mare or Gelding. Four years old and over.

# Riders not to have attained their 14th birthday before 1st January in the current year.

**Class 286 Junior Ridden Open, exc. 138cms. (exc M&M).** Mare or Gelding. Four years old and over.

# Riders not to have attained their 18th birthday before 1st January in the current year.

**The three highest placed exhibits not already qualified in classes 285 - 286 will qualify for the 2020 SWPA Junior Open Ridden Championship.**

### **SWPA JUNIOR M&M RIDDEN 2020 CHAMPIONSHIP QUALIFIER**

*All ponies in this section MUST be registered with their respective Pure Breed Societies.*

**Class 287 Junior Small Breeds M&M Ridden.** Mare or Gelding. Four years old and over, registered in their respective Pure Breed Society Stud books of

# Shetland, Exmoor, Dartmoor, Welsh A & B. Riders not to have attained their 14th birthday before 1st January in the current year.

**Class 288 Junior Large Breeds M&M Ridden.** Mare or Gelding. Four years old and over, registered in their respective Pure Breed Society Stud books of

# New Forest, Connemara, Dales, Fell, Highland, Welsh C & D.

Riders not to have attained their 18th birthday before 1st January in the current year.

**The three highest placed exhibits not already qualified in classes 287 – 288 will qualify for the 2020 SWPA Junior Ridden M&M Championship.**

*The first & second placed Riders in classes 285 – 288 will qualify for the TSR Ridden Championship on Saturday.*

**JUNIOR RIDDEN CHAMPIONSHIP (ch52):**

**1st & 2nd placed exhibits from classes 285 – 288 to compete.**

**CHAMPION & RESERVE to go forward to the SWPA RMB Festival Ridden Championship during the Thursday Evening Performance**

## **YOUNG HORSE / PONY RIDDEN CLASSES**

### **CLASSES 289 – 292 ARE OPEN TO 4, 5, 6 YEAR OLD EQUINES ONLY**

**Class 289 Young Open Ridden, 4, 5, 6 year old, n/exc. 148cms. (exc M&M).** Stallion, Mare or Gelding. Four years old and over.

# Riders must be correct age for height of equine they ride. (See rules at the end of the schedule) (See Rules for Ridden Stallions)

**The three highest placed exhibits not already qualified in class 289 will qualify for the 2020 SWPA Open Ridden Pony Category suitable for the qualifying equine (one category only)**

**Class 290 Young Open Ridden, 4, 5, 6 year old, exc. 148cms. (exc M&M).** Stallion, Mare or Gelding. Four years old and over.

# Riders any age. (See Rules for Ridden Stallions)

**The three highest placed exhibits not already qualified in class 290 will qualify for the 2020 SWPA Open Ridden Category suitable for the qualifying equine (one category only)**

*All ponies in classes 291 - 292 MUST be registered with their respective Pure Breed Societies.*

**Class 291 Young Small Breeds M&M Ridden, 4, 5, 6 year old.** Mare or Gelding. Four years old and over, registered in their respective Pure Breed Society

# Stud books of Shetland, Exmoor, Dartmoor, Welsh A & B. Riders any age. (See Rules for Ridden Stallions)

**Class 292 Young Large Breeds M&M Ridden, 4, 5, 6 year old.** Mare or Gelding. Four years old and over, registered in their respective Pure Breed Society

# Stud books of New Forest, Connemara, Dales, Fell, Highland, Welsh C & D. Riders any age. (See Rules for Ridden Stallions)

**The three highest placed exhibits not already qualified in classes 291 – 292 will qualify for the 2020 SWPA PONDAROSA STUD Mountain & Moorland Ridden Championship**

*The first & second placed Riders in classes 289 – 292 will qualify for the TSR Ridden Championship on Saturday.*

**YOUNG RIDDEN CHAMPIONSHIP (ch53):**

**1st & 2nd placed exhibits from classes 289 – 292 to compete.**

**CHAMPION & RESERVE to go forward to the SWPA RMB Festival Ridden Championship during the Thursday Evening Performance**

**ON-LINE PRE-ENTRIES MUST BE RECEIVED BY MIDNIGHT ON 28 AUGUST 2020**

**[www.showingscene.com](http://www.showingscene.com)**

**Entries after this date and on the day entries at extra cost**

### WALK & TROT BEGINNERS CLASSES

#### CLASSES 293 – 295 ARE FOR TRUE BEGINNERS. WALK AND TROT SHOW ONLY.

**Class 293** Beginners Walk & Trot. Riders **Eighteen & over**. Any type. Four years old and over. Riders to have attained their 18<sup>th</sup> birthday before 1<sup>st</sup> January in the current year.

**Class 294** Beginners Walk & Trot. Riders **Thirteen – Seventeen**. Any type. Four years old and over. Riders to have attained their 13<sup>th</sup> birthday but not to have attained their 18<sup>th</sup> birthday before 1<sup>st</sup> January in the current year.

**Class 295** Beginners Walk & Trot. Riders **Three - Twelve**. Any type. Four years old and over. Riders to have attained their 3<sup>rd</sup> birthday but not to have attained their 12<sup>th</sup> birthday before 1<sup>st</sup> January in the current year.

#### **WALK & TROT RIDDEN CHAMPIONSHIP (ch54):**

**1st & 2nd placed exhibits from classes 293 – 295 to compete.**

### TINY TOTS CLASSES

**Class 296** Beginners Lead Rein. Riders **3 – 5 years old**. Ponies any type suitable for size of rider. Riders to have attained their 3<sup>rd</sup> birthday but not to have attained their 6<sup>th</sup> birthday before 1<sup>st</sup> January in the current year.

**Class 297** Beginners First Ridden. Riders **4 – 6 years old**. Ponies any type suitable for size of rider. Riders to have attained their 4<sup>th</sup> birthday but not to have attained their 7<sup>th</sup> birthday before 1<sup>st</sup> January in the current year.

#### **TINY TOTS CHAMPIONSHIP (ch55):**

**1st & 2nd placed exhibits from classes 296 – 297 to compete.**

### SENIOR RIDERS CLASSES

## **ROSETTES IN CLASSES 298 – 299** **ARE KINDLY SPONSORED BY**

**Class 298** Senior Riders **40 – 55 year old**. Equine any type. Riders to have attained their 40<sup>th</sup> birthday but not attained their 56<sup>th</sup> birthday before 1<sup>st</sup> January in the current year.

**Class 299** Senior Riders **56 years old and over**. Equine any type. Riders to have attained their 56<sup>th</sup> birthday before 1<sup>st</sup> January in the current year.

**1st & 2nd placed exhibits from classes 298 – 299 to go forward to the Senior Riders Championship on Friday Evening.**

### STYLE & PERFORMANCE CLASSES

*PHASE ONE: Competitors will be expected to complete a Working Hunter type jumping course of nine jumps.*

*PHASE TWO: Competitors will be expected to carry out a Freestyle Test to include the following movements:*

*Halt, Walk on a long rein, Ordinary trot serpentine, Extended trot on the diagonal, Canter serpentine with change of lead, Extended canter on the diagonal. Not to exceed 2 minutes. Competitors will be marked out of 10 points for each phase. Style Mark out of 20 points.*

#### MOUNTAIN & MOORLAND STYLE & PERFORMANCE

Stallion, Mare or Gelding. Four years old and over registered in their respective Pure Breed Society Stud Books. Riders any age.

*(See rules for Ridden Stallions)*

**Class 300** Mountain & Moorland, not exceeding 122cms. Rider any age. *(See Rules for Ridden Stallions)*

**Class 301** Mountain & Moorland, exceeding 122cms, but not exceeding 138cms. Rider any age. *(See Rules for Ridden Stallions)*

**Class 302** Mountain & Moorland, exceeding 138cms. Rider any age. *(See Rules for Ridden Stallions)*

#### OPEN STYLE & PERFORMANCE. (Excluding M&M)

**Class 303** Open Pony, not exc. 133cms. Mare or Gelding. Four years old and over.

*(Riders to be suitable size for pony ridden)*

**Class 304** Open Pony, exc. 133cms but not exc. 153cms. Mare or Gelding. Four years old and over.

*(Riders to be suitable size for pony ridden)*

**Class 305** Open Horse / Hunter / Cob. Mare or Gelding. Four years old and over. Exceeding 148cms. Rider any age.

#### **STYLE & PERFORMANCE CHAMPIONSHIP (ch72):**

**CHAMPION & RESERVE to go forward to the Style & Performance Championship during the Friday Evening Performance**

### WORKING HUNTER CLASSES

**NOVICE RULES :** *Equines NOT to have been placed first in ANY Working Hunter Class before 1<sup>st</sup> January in the current year.*

#### SWPA NOVICE WORKING HUNTER 2020 CHAMPIONSHIP QUALIFIERS

**Novice Mountain & Moorland Working Hunter Pony.**

Stallion, Mare or Gelding. Four years old and over registered in their respective Pure Breed Society Stud Books.

**Class 310** Novice M&M Working Hunter, exceeding 138cms. Riders any age. *(See rules for Ridden Stallions)*

**Class 311** Novice M&M Working Hunter, not exceeding 138cms. Riders any age. *(See rules for Ridden Stallions)*

**The three highest placed exhibits not already qualified in classes 310 – 311 will qualify for the 2020 SWPA Novice M&M Working Hunter Pony Championship.**

**Novice Open Working Hunter.**

**Class 312** Novice Working Hunter Pony. Mare or Gelding. Four years old and over. Not exceeding 153cms.

*(Riders to be suitable size for pony ridden)*

**The two highest placed equines in each height section (n/exc 122cms, 133cms, 143cms & 153cms) not already qualified in class 312 will qualify for the 2019 SWPA Novice Working Hunter Pony Championship.**

**Class 313** Novice Working Horse / Hunter / Cob. Mare or Gelding. Four years old and over. Exceeding 148cms. Rider any age.

**The four highest placed equines not already qualified in class 313 will qualify for the 2020 SWPA Novice Working Horse Championship.**

#### **NOVICE WHP CHAMPIONSHIP (ch69):**

**1st & 2nd placed exhibits from classes 310 – 313 to compete.**



## **LEAD REIN / MINI WORKING HUNTER CLASSES**

**Class 314 Lead Rein WHP M&M and Open Types.** Mare or Gelding. Four years old and over, not exceeding 122cms. M&M types must be registered with their respective Pure Breed Society Stud Books. Riders not to have attained their 9th birthday before 1st January in the current year. To be led by an attendant, and shown in a SNAFFLE BRIDLE, the Lead Rein to be attached to the noseband only, and held in the Leader's outside hand.

*The three highest placed M&M and Open Types not already qualified in class 314 will qualify for the 2019 SWPA Lead Rein Working Hunter Pony Championship.*

**Class 315 Cradle / Nursery Stakes M&M and Open Types.** Mare or Gelding. Four years old and over. Open types not exceeding 133cms. M&M types not exceeding 128cms. M&M types must be registered with their respective Pure Breed Society Stud Books. Riders not to have attained their 10th birthday for Cradle Stakes and 12th birthday for Nursery Stakes before 1st January in the current year.

*The three highest placed Cradle Stakes types, Nursery Open types, and Nursery M&M types not already qualified in class 315 will qualify for the 2019 SWPA Relevant Mini Working Hunter Pony Championship.*

*The first & second placed Riders in class 315 will qualify for the TSR Welsh & South West Riders Championship on Saturday.*

### **MINI WORKING HUNTER CHAMPIONSHIP (ch70):**

**1st & 2nd placed exhibits from classes 314 – 315 to compete.**

## **OPEN WORKING HUNTER CLASSES**

### **Mountain & Moorland Working Hunter Pony.**

Stallion, Mare or Gelding. Four years old and over registered in their respective Pure Breed Society Stud Books.

**Class 316 Mountain & Moorland Working Hunter, exceeding 138cms.** Rider any age. *(See Rules for Ridden Stallions)*

**Class 317 Mountain & Moorland Working Hunter, not exceeding 138cms.** Rider any age. *(See Rules for Ridden Stallions)*

*The three highest placed equines not already qualified in classes 316 – 317 will qualify for the 2020 SWPA Open M&M Working Hunter Pony Championship.*

### **Open Working Hunter.**

**Class 318 Open Working Hunter Pony, not exc. 133cms.** Mare or Gelding. Four years old and over.

*(Riders to be suitable size for pony ridden)*

**Class 319 Open Working Hunter Pony, exc. 133cms but not exc. 153cms.** Mare or Gelding. Four years old and over.

*(Riders to be suitable size for pony ridden)*

*The two highest placed equines in each height section (n/exc 122cms, 133cms, 143cms & 153cms) not already qualified in classes 318 – 319 will qualify for the 2019 SWPA Working Hunter Pony Championship.*

**Class 320 Open Working Horse / Hunter / Cob.** Mare or Gelding. Four years old and over. Exceeding 148cms. Rider any age.

*The four highest placed exhibits not already qualified in class 320 will qualify for the 2020 SWPA Open Working Horse Championship.*

*The first & second placed Riders in classes 316 – 320 will qualify for the TSR Ridden Championship on Saturday.*

### **OPEN WHP CHAMPIONSHIP (ch71):**

**1st & 2nd placed exhibits from classes 316 – 320 to compete.**

***CHAMPION & RESERVE to go forward to the SWPA RMB Festival Ridden Championship during the Thursday Evening Performance***

## **BEST TURNED OUT CLASSES**

**Class 330 Best Turned Out Open Under Saddle.** (Excluding Mountain & Moorland) Stallion, Mare or Gelding. Four years old and over.

*(Including Lead Rein)*

**Class 331 Best Turned Out Mountain & Moorland Under Saddle.** Stallion, Mare or Gelding. Four years old and over.

*(Including Lead Rein)*

### **BEST TURNED OUT CHAMPIONSHIP (ch97):**

**1st & 2nd placed exhibitors from classes 330 – 331 to compete**

## **FAMILY HORSE/PONY & RIDING CLUB HORSE/PONY**

**Class 332 Family Horse / Pony Ridden.** Mare or Gelding. Four years old and over. Any Height.

To be ridden in a SNAFFLE BRIDLE. NO SPURS or WHIPS/CANS.

To be judged on Manners and Suitability for any member of the family to ride.

**Class 333 Riding Club Horse / Pony Ridden.** Mare or Gelding. Four years old and over. Class will be judged on individual show, manners of horse/pony and it's suitability for the rider.

### **FAMILY HORSE/PONY, RIDING CLUB HORSE/PONY CHAMPIONSHIP (ch98):**

**1st & 2nd placed exhibitors from classes 332 – 333 to compete**

## **SWPA MASTER CLASSES**

These classes are designed to help exhibitors get the best out of their equines whilst in the ring. Judges will assess your performance and give helpful advice on ways to improve your results in the ring.

### **WORKING HUNTER**

**Class MC1 Working Hunter Horse / Pony.** Any Type. Four years old and over. Rider any age suitably mounted.

## **CLOSURE OF CLASSES:**

**AN IN-HAND CLASS WILL BE DEEMED CLOSED TO LATE ENTRANTS WHEN THE FIRST EXHIBIT BEGINS IT'S INITIAL TROT ROUND.**

**A RIDDEN CLASS WILL BE DEEMED CLOSED TO LATE ENTRANTS WHEN THE EXHIBITORS BEGIN THE INITIAL TROT ROUND**

**Don't forget you can pay your registration fees and entry fees on line at [www.showingscene.com](http://www.showingscene.com)**



# TRUCKSMITH®

are proud to sponsor the

## South West Pony Association Supreme Mini Ridden Championship



Voted **WhatVan?**  
**Converter of the Year**  
**2017 & 2018**

[www.trucksmith.com](http://www.trucksmith.com)    [www.loloader.co.uk](http://www.loloader.co.uk)



MADE IN BRITAIN

# *South West Pony Association's*

## *SWPA Pondarosa Stud Family Showing Series*

***This competition is for owners / competitors who genuinely do the work themselves from home.***

*All we ask is that you enter in the genuine spirit of the competition and that you are entering an equine not to have been produced professionally by another person in the show ring in the category entered in the past twelve months.*

*The equine MUST be ridden or shown by a member of the family.*

*We may ask to see proof of ownership or lease/loan papers to prove this, and will sanction anyone found to be abusing this rule.*

### **SWPA PONDAROSA STUD FAMILY SHOWING SERIES CLASSES 351 - 390**

***PLEASE NOTE: You do not need to be registered with SWPA to enter classes 351 – 390***

#### **IN-HAND SECTION**

**Class 351 In-Hand Pony. Any Type (exc M&M). Youngstock. (Special Best Yearling)**

**Class 352 In-Hand Pony. Any Type (exc M&M). Four & over.**

**Class 353 In-Hand Horse/Hack/Hunter/Cob. Any type. Youngstock. (Special Best Yearling)**

**Class 354 In-Hand Horse/Hack/Hunter/Cob. Any type. Four & over.**

**Class 355 In-Hand Coloured Horse/Pony. Youngstock. (Special Best Yearling)**

**Class 356 In-Hand Coloured Horse/Pony. Four & over.**

*M&M Small Breeds must be registered in the Pure Breed Society Stud books of Shetland, Dartmoor, Exmoor, Welsh A & B*

**Class 357 In-Hand M&M Small Breeds. Youngstock. (Special Best Yearling)**

**Class 358 In-Hand M&M Small Breeds. Four & over.**

*M&M Large Breeds must be registered in the Pure Breed Society Stud books of New Forest, Connemara, Dales, Fell, Highland, Welsh C & D*

**Class 359 In-Hand M&M Large Breeds. Youngstock. (Special Best Yearling)**

**Class 360 In-Hand M&M Large Breeds. Four & over.**

**Class 361 In-Hand Veteran. Any type, Fifteen years old & over**

***YEARLING CHAMPIONSHIP (ch56):***

**1st & 2nd placed Yearlings from classes 351, 353, 355, 357 & 359 to compete**

***IN-HAND CHAMPIONSHIP (ch57):***

**1st & 2nd placed exhibits from classes 351 – 361 to compete.**

***Champion & Reserve to go forward to the Family Showing Series Championship held during the 'Evening Performance'***

#### **MINI RIDDEN SECTION**

**Class 370 Open Lead Rein Show Pony.** Mare or Gelding. Four years old and over, not exceeding 122cms. Riders not to have attained their 8th birthday before 1st January in the current year. To be led by an attendant, and shown in a SNAFFLE BRIDLE, the Lead Rein to be attached to the noseband only, and held in the Leader's outside hand.

**Class 371 Open First Ridden Show Pony.** Mare or Gelding. Four years old and over, not exceeding 122cms.

Riders not to have attained their 10th birthday before 1st January in the current year. To be shown in a SNAFFLE BRIDLE.

**Class 372 Lead Rein Pony of Show Hunter Type.** Mare or Gelding. Four years old and over, not exceeding 122cms. Riders not to have attained their 9th birthday before 1st January in the current year. To be led by an attendant, and shown in a SNAFFLE BRIDLE, the Lead Rein to be attached to the noseband only, and held in the Leader's outside hand.

**Class 373 First Ridden Pony of Show Hunter Type.** Mare or Gelding. Four years old and over, not exceeding 122cms.

Riders not to have attained their 10th birthday before 1st January in the current year. To be shown in a SNAFFLE BRIDLE.

**Class 374 Mountain & Moorland Lead Rein.** Open to registered Shetland, Exmoor, Dartmoor, New Forest, Welsh Section A or B. Mare or Gelding.

Four years old or over not exceeding 122cms. Riders not to have attained their 9th birthday before the 1st January in the current year.

To be led by an attendant, and shown in a SNAFFLE BRIDLE, the Lead Rein to be attached to the noseband only, and held in the Leader's outside hand.

**Class 375 Mountain & Moorland First Ridden.** Open to registered Shetland, Exmoor, Dartmoor, New Forest, Welsh Section A or B. Mare or Gelding.

Four years old or over not exceeding 128cms. Riders not to have attained their 12th birthday before the 1st January in the current year.

To be shown in a SNAFFLE BRIDLE.

***MINI RIDDEN CHAMPIONSHIP (ch58):***

**1st & 2nd placed exhibits from classes 370 – 375 to compete.**

***Champion & Reserve to go forward to the Family Showing Series Championship held during the 'Evening Performance'***

#### **RIDDEN SECTION**

**Class 376 Ridden Show Pony/ Show Hunter Pony.** Mare or Gelding. Four years old and over. Show Pony not exceeding 148cms.

Show Hunter Pony not exceeding 153cms. (*Riders to be suitable size for pony ridden*)

**Class 377 Ridden Intermediate Show Riding / Show Hunter Type.** Mare or Gelding. Four years old and over. Show Riding Type exceeding 146cms but not exceeding 158cms. Show Hunter Type exceeding 148cms but not exceeding 158cms. (*Riders to be suitable size for intermediate ridden*)

**Class 378 Ridden Horse/Hack/Hunter/Cob.** Four years old and over.

Riding Horse exceeding 148cms. Hack not exceeding 160cms. Riders to have attained their 15th birthday before 1st January in the current year.

Hunter & Cob exceeding 148cms. Riders to have attained their 16th birthday before 1st January in the current year.

**Class 379 Ridden Competition Pony.** Stallion, Mare or Gelding. Four years old and over, not exceeding 148cms. Riders any age.

(*see rules for Ridden Stallions*)

**Class 380 Ridden Competition Horse.** Stallion, Mare or Gelding. Four years old and over, exceeding 148cms. Riders any age.

(*see rules for Ridden Stallions*)

**Class 381 Ridden Coloured Pony.** Stallion, Mare or Gelding. Four years old and over, not exceeding 148cms. Riders any age.

(*see rules for Ridden Stallions*)

**Class 382 Ridden Coloured Horse.** Stallion, Mare or Gelding. Four years old and over, exceeding 148cms. Riders any age.

(*see rules for Ridden Stallions*)



**Class 383 Junior Rider. Any Type/Breed.** Four years old and over. Rider must be 15 years and under at 1st January in the current year.

**Class 384 Senior Rider. Any Type/Breed.** Four years old and over. Rider must be 16 years and over at 1st January in the current year.

*All exhibits in this Mountain & Moorland section MUST be registered with their respective Breed Society Stud Books*

**Class 385 Ridden Shetland, Exmoor, Dartmoor.** Stallion, Mare or Gelding. Four years old and over. Riders any age. *(see rules for Ridden Stallions)*

**Class 386 Ridden Welsh sections A & B.** Stallion, Mare or Gelding. Four years old and over. Riders any age. *(see rules for Ridden Stallions)*

**Class 387 Ridden New Forest, Connemara.** Stallion, Mare or Gelding. Four years old and over. Riders any age. *(see rules for Ridden Stallions)*

**Class 388 Ridden Dales, Fell, Highland.** Stallion, Mare or Gelding. Four years old and over. Riders any age. *(see rules for Ridden Stallions)*

**Class 389 Ridden Welsh sections C & D.** Stallion, Mare or Gelding. Four years old and over. Riders any age. *(see rules for Ridden Stallions)*

**Class 390 Ridden Veteran. Fifteen years & over.** Stallion, Mare or Gelding. Four years old and over. Riders any age. *(see rules for Ridden Stallions)*

**RIDDEN CHAMPIONSHIP (ch59):**

**1st & 2nd placed exhibits from classes 376 – 390 to compete.**

**Champion & Reserve to go forward to the Family Showing Series Championship held during the 'Evening Performance'**



*Tanryn Whatsizname*

Pondarosa Welsh D Stud, Exeter Sponsered by Alvahorse and Welsh cob shop for all your needs to shine in the ring from products to in hand tack and clothing

Alvahorse Products enhances natural beauty, contact 07894044010 to order

South West Pony Association Showing Champion

## Pondarosa Welsh D Stud Exeter, Devon

*Sponsors of the*

**SWPA Pondarosa Stud  
Family Showing Series  
&  
Native Medal Awards**

## South West Pony Association's

### NATIVE MEDAL AWARDS CLASSES NM1 - NM2 (Preliminary Judging)

*PLEASE NOTE: You need to have Pre-Qualified for this competition and paid the Entry Fee of £20.00  
Competition Rules can be found on our web site*

#### **SWPA PONDAROSA STUD NATIVE MEDAL AWARDS PRELIMINARY JUDGING**

*All ponies in this section MUST be registered with their respective Pure Breed Societies.*

**NM1 Mountain & Moorland In-Hand.** All Pre-Qualified exhibits to enter the ring together. Competitors will then be asked to carry out an individual In-Hand show. Marks will be awarded for Presentation, Performance, Conformation & Breed Type.

**NM2 Mountain & Moorland Ridden.** All Pre-Qualified exhibits to enter the ring together. Competitors will then be asked to carry out an individual Ridden show suitable for the type of pony entered. i.e. Lead Rein, First Ridden or Open. Marks will be awarded for Presentation, Performance, Conformation, Breed Type & Star Quality.

**NO marks will be available at this point. Competitors will be asked to return to the Superflex Arena during the Evening Performance on Friday for the Presentation of Awards. See the 'Evening Performance' Time Table for start times.**

---

# South West Pony Association's

## OPEN MEDAL AWARDS CLASSES OM1 - OM2 (Preliminary Judging)

*PLEASE NOTE: You need to have Pre-Qualified for this competition and paid the Entry Fee of £20.00  
Competition Rules can be found on our web site*

### SWPA TEAM REYNOLDS OPEN MEDAL AWARDS PRELIMINARY JUDGING

- OM1    Open (Non-Native) In-Hand.** All Pre-Qualified exhibits to enter the ring together, Competitors will then be asked to carry out an individual In-Hand show. Marks will be awarded for Presentation, Performance, Conformation & Star Quality.
- OM2    Open (Non-Native) Ridden.** All Pre-Qualified exhibits to enter the ring together. Competitors will then be asked to carry out an individual Ridden show suitable for the type of equine entered. i.e. Lead Rein, First Ridden or Open.  
Marks will be awarded for Presentation, Performance, Conformation & Star Quality.

*NO marks will be available at this point. Competitors will be asked to return to the Superflex Arena during the Evening Performance on Friday for the Presentation of Awards. See the 'Evening Performance' Time Table for start times.*

---

## **The SWPA Trucksmith Ltd Supreme Mini Ridden Championship**

**Qualifiers for this competition will be held at all SWPA shows.**

**The Champion & Reserve from the qualifying classes will be invited to go forward to the final on Thursday of the 2020 SWPA Championship Show during the 'Evening Performance'**

**There will be a prize fund for this competition of over £350 with prizes down to sixth place**  
First Prize £100   Second Prize £80   Third Prize £60   Fourth Prize £50   Fifth Prize £40   Sixth Prize £30



## **SWPA WALES & WEST FESTIVAL CLASSES 431 - 545**

*PLEASE NOTE: You do not need to be registered with SWPA to enter classes 431 - 545  
If you qualify from any of the classes you will need to register to be able to enter the Championship Classes.*

### **OPEN IN-HAND CLASSES**

#### **SWPA OPEN IN-HAND 2020 CHAMPIONSHIP QUALIFIERS**

**Class 431 Pure, Anglo & Part Bred Arab. Youngstock.** Yearling, Two & Three year old. *(Special Best Yearling)*

**Class 432 Pure, Anglo & Part Bred Arab. Four and over.** Stallion, Mare or Gelding.

*The three highest placed exhibits not already qualified in classes 431 – 432 will qualify for the 2020 SWPA In-Hand Pure, Anglo & Part Bred Championship*

**Class 433 Mountain & Moorland Part Bred. Youngstock.** Yearling, Two & Three year old. *(Special Best Yearling)*

**Class 434 Mountain & Moorland Part Bred. Four and over.** Stallion, Mare or Gelding.

*The three highest placed exhibits not already qualified in classes 433 – 434 will qualify for the 2020 SWPA In-Hand Mountain & Moorland Part Bred Championship*

**Class 435 Pony to make Lead Rein Pony. Youngstock.** Yearling, Two and Three year old. *(Special Best Yearling)*

**Class 436 Driving Type. Youngstock.** Colt, Filly or Gelding. *(Special Rosette to Best Yearling)*

**Class 437 Driving Type. Four and over.** Stallion, Mare or Gelding.

**Class 438 World Breeds.** (Excluding British Native Breeds, M&M Part Breds, Pure, Part Bred & Anglo Arabs) Any Age. *(Special Best Youngstock)*

*The three highest placed exhibits not already qualified in class 438 will qualify for the 2020 SWPA In-Hand World Breeds Championship*

**Class 439 Competition Pony / Horse. Youngstock.** Yearling, Two and Three year old. *(Special Best Yearling)*

**Class 440 Competition Pony / Horse. Four and over.** Stallion, Mare or Gelding.

*The three highest placed exhibits not already qualified in classes 439 – 440 will qualify for the 2020 SWPA In-Hand Competition Horse Championship*

*Note: Coloured classes to include, Skewbald, Piebald, Appaloosa, Spotted, Palomino and Dun.*

**Class 441 Coloured Horse/Pony. Youngstock.** Yearling, Two & Three year old. *(Special Best Yearling)*

**Class 442 Coloured Horse/Pony. Four and over.** Stallion, Mare or Gelding.

*The three highest placed exhibits not already qualified in classes 441 – 442 will qualify for the 2020 SWPA In-Hand Coloured Horse/Pony Championship*

**Class 443 Riding Pony. Any age.** Not to exceed 148cms. *(Special Best Youngstock)*

*The three highest placed exhibits not already qualified in class 443 will qualify for the 2020 SWPA In-Hand Riding Pony Championship*

**Class 444 Show Hunter Pony. Any age.** Not to exceed 153cms. *(Special Best Youngstock)*

*The three highest placed exhibits not already qualified in class 444 will qualify for the 2020 SWPA In-Hand Show Hunter Pony Championship*

**Class 445 Riding Horse / Hack. Any age.** Riding Horse to exceed 148cms. Hack not to exceed 160cms. *(Special Best Youngstock)*

*The three highest placed exhibits not already qualified in class 445 will qualify for the 2020 SWPA In-Hand Riding Horse / Hack Championship*

**Class 446 Hunter Type. Any age.** To exceed 148cms. *(Special Best Youngstock)*

*The three highest placed exhibits not already qualified in class 446 will qualify for the 2020 SWPA In-Hand Hunter Championship*

**Class 447 Pre-Veteran Horse / Pony.** Fifteen to Nineteen years old.

**Class 448 Veteran Horse / Pony.** Twenty years old and over.

*The three highest placed exhibits not already qualified in classes 447 – 448 will qualify for the 2020 SWPA In-Hand Veteran Championship*

**Class 449 X Race Horse. Four and over.** Stallion, Mare or Gelding. Must have competed in an official race run under Jockey Club Rules.

*The three highest placed exhibits not already qualified in class 449 will qualify for the 2020 SWPA In-Hand X Race Horse Championship.*

**Class 450 Moorland or Hill Bred Ponies. Any age.** Exhibits must be Pure Bred, but not necessarily registered within their respective Breed Society. *(Special Best Youngstock)* (Ponies eligible for the Mountain & Moorland classes, **cannot** enter this class)

*The three highest placed exhibits not already qualified in class 450 will qualify for the 2020 SWPA In-Hand Moorland & Hill Bred Championship.*

**Class 451 Miniature Horse. Any age.** (excluding Shetlands) Must be registered with their respective Miniature Horse Society. *(Special Rosette to Best Youngstock)*

*The three highest placed exhibits not already qualified in class 451 will qualify for the 2020 SWPA In-Hand Miniature Horse Championship*

**Class 452 Show Cob. Any age.** *(Special Rosette to Best Youngstock)*

*The three highest placed exhibits not already qualified in class 452 will qualify for the 2020 SWPA In-Hand Cob Championship*

**Class 453 Traditional Cob Type. Youngstock.** (Unplaited). Yearling, Two & Three year old.

**Class 454 Traditional Cob Type. Four and over.** (Unplaited). Stallion, Mare or Gelding.

*The three highest placed exhibits not already qualified in classes 453 – 454 will qualify for the 2020 SWPA In-Hand Traditional Cob Championship*

**Class 455 Gelding. Any age.** (exc. M&M) *(Special Rosette to Best Youngstock)*

**Class 456 Filly or Mare. Any age.** (exc. M&M) *(Special Rosette to Best Youngstock)*

**Class 457 Colt or Stallion. Any age.** (exc. M&M) *(Special Rosette to Best Youngstock)*

**Class 458 Owner Bred. (exc. M&M). Any age.** *(Special Rosette to Best Youngstock)*

*The three highest placed exhibits not already qualified in class 458 will qualify for the 2020 SWPA Owner Bred Championship*

*The two highest placed handlers with a TSR In-Hand Card in classes 431 – 458 will qualify for the TSR In-Hand Championship on Saturday.*

#### **OPEN IN-HAND CHAMPIONSHIP (ch61):**

**1st & 2nd placed exhibits from classes 431 – 458 to compete.**

**CHAMPION & RESERVE to go forward to the SWPA Wales & West Festival In-Hand Championship during the Friday Evening Performance**

### **CLOSURE OF CLASSES:**

**AN IN-HAND CLASS WILL BE DEEMED CLOSED TO LATE ENTRANTS WHEN THE FIRST EXHIBIT BEGINS ITS INITIAL TROT ROUND.**

**A RIDDEN CLASS WILL BE DEEMED CLOSED TO LATE ENTRANTS WHEN THE EXHIBITORS BEGIN THE INITIAL TROT ROUND**

## **MOUNTAIN & MOORLAND IN-HAND CLASSES**

### **SWPA PONDAROSA STUD MOUNTAIN & MOORLAND IN-HAND 2020 CHAMPIONSHIP QUALIFIERS**

*All ponies in this section MUST be registered with their respective Pure Breed Societies.*

**Class 460 Welsh sections A & B. Youngstock.** Yearling, Two and Three year old. *(Special Rosette to Best Yearling)*

**Class 461 Welsh sections A & B. Four and over.** Stallion, Mare or Gelding.

**Class 462 Welsh sections C & D. Youngstock.** Yearling, Two and Three year old. *(Special Rosette to Best Yearling)*

**Class 463 Welsh sections C & D. Four and over.** Stallion, Mare or Gelding.

**Class 464 New Forest, Connemara. Any age.** *(Special Rosette to Best Youngstock)*

**Class 465 Dales, Fell, Highland Any age.** *(Special Rosette to Best Youngstock)*

**Class 466 Miniature Shetland. Youngstock.** Not to exceed 34" at maturity. Yearling, Two and Three year old. *(Special Rosette to Best Yearling)*

**Class 467 Miniature Shetland. Four and over.** Not exceeding 34". Stallion, Mare or Gelding.

**Class 468 Standard Shetland, Exmoor, Dartmoor. Youngstock.** Yearling, Two and Three year old. *(Special Rosette to Best Yearling)*

**Class 469 Standard Shetland, Exmoor, Dartmoor. Four and over.** Stallion, Mare or Gelding.

**Class 470 Mountain & Moorland Filly / Mare. Any age.** *(Special Rosette to Best Youngstock)*

**Class 471 Mountain & Moorland Gelding. Any age.** *(Special Rosette to Best Youngstock)*

**Class 472 Mountain & Moorland Colt / Stallion. Any age.** *(Special Rosette to Best Youngstock)*

**The three highest placed exhibits not already qualified in classes 460 – 472 will qualify for the 2020 SWPA PONDAROSA STUD Mountain & Moorland In-Hand Championship**

**Class 473 Owner Bred. M&M only.** Any age. *(Special Rosette to Best Youngstock)*

**The three highest placed exhibits not already qualified in class 473 will qualify for the 2020 SWPA In-Hand Owner Bred Championship**

**The two highest placed exhibitors with a TSR In-Hand Card in classes 460 – 473 will qualify for the TSR In-Hand Championship on Saturday.**

### **MOUNTAIN & MOORLAND IN-HAND CHAMPIONSHIP (ch67):**

**1st & 2nd placed exhibits from classes 460– 473 to compete.**

***CHAMPION & RESERVE to go forward to the SWPA Wales & West Festival In-Hand Championship during the Friday Evening Performance***

## **YOUNG HANDLER CLASSES**

### **SWPA YOUNG HANDLER 2020 CHAMPIONSHIP QUALIFIERS**

**MARES or GELDINGS ONLY. NO STALLIONS or COLTS.**

**Class 475 Young Handler, 4 – 7 years.** Handlers to have attained their 4<sup>th</sup> birthday, but not to have attained their 8<sup>th</sup> birthday before 1st January in the current year.

**Class 476 Young Handler, 8 – 11 years.** Handlers to have attained their 8<sup>th</sup> birthday, but not to have attained their 12<sup>th</sup> birthday before 1<sup>st</sup> January in the current year.

**Class 477 Young Handler, 12 – 14 years.** Handlers to have attained their 12<sup>th</sup> birthday, but not to have attained their 15<sup>th</sup> birthday before 1<sup>st</sup> January in the current year.

**Class 478 Young Handler 15 – 18 years.** Handlers to have attained their 15<sup>th</sup> birthday, but not to have attained their 18<sup>th</sup> birthday before 1st January in the current year.

**The first, second & third placed exhibitors in classes 475 – 478 will qualify for the 2020 SWPA Young Handler Championship.**

### **YOUNG HANDLER CHAMPIONSHIP (ch68):**

**1st & 2nd placed exhibitors from classes 475 – 478 to compete.**

## **NOVICE RIDDEN CLASSES**

**NOVICE RIDDEN CLASSES 480 – 484. Ponies not to have been placed first in ANY ridden class before 1st January in the current year.**

### **SNAFFLE BRIDLES ONLY**

#### **SWPA NOVICE M&M RIDDEN 2020 CHAMPIONSHIP QUALIFIERS**

*All ponies in this section MUST be registered with their respective Pure Breed Societies.*

**Class 480 Novice Ridden M&M Small Breeds.** Stallion, Mare or Gelding. Four years old and over. Registered in the Pure Breed Society  
# Stud books of Shetland, Dartmoor, Exmoor, Welsh A & B. Riders any age. *(see rules for Ridden Stallions)*  
To be shown in a SNAFFLE BRIDLE.

**Class 481 Novice Ridden M&M Large Breeds.** Stallion, Mare or Gelding. Four years old and over. Registered in the Pure Breed Society  
# Stud books of New Forest, Connemara, Dales, Fell, Highland, Welsh C & D. Riders any age. *(see rules for Ridden Stallions)*  
To be shown in a SNAFFLE BRIDLE.

**The three highest placed exhibits not already qualified in classes 480 – 481 will qualify for the 2020 SWPA Novice Ridden Mountain & Moorland Championship.**

#### **SWPA NOVICE OPEN RIDDEN 2020 CHAMPIONSHIP QUALIFIERS**

**Class 482 Novice Ridden Riding Pony / Show Hunter Pony.** Stallion, Mare or Gelding. Four years old and over, not exceeding 153cms.  
# *(Riders to be suitable size for pony ridden)*  
To be shown in a SNAFFLE BRIDLE. *(See Rules for Ridden Stallions)*

**The two highest placed Riding Ponies and the two highest placed Show Hunter Ponies not already qualified in class 482 will qualify for the 2020 SWPA Novice Ridden Riding Pony / Show Hunter Pony Championship.**

**Class 483 Novice Ridden Intermediate.** Mare or Gelding. Four years old and over, exceeding 146cms but not exceeding 158cms.  
# *(Riders to be suitable size for intermediate ridden)*  
To be shown in a SNAFFLE BRIDLE.

**The three highest placed exhibits not already qualified in class 483 will qualify for the 2020 SWPA Novice Ridden Intermediate Championship.**

**Class 484 Novice Ridden Hack / Riding Horse / Hunter / Cob.** Mare or Gelding. Four years old and over.  
# Hack not to exceed 160cms. Riding Horses to exceed 148cms.  
Cob to exceed 148cms but not to exceed 155cms. Riders to have attained their 15th birthday before 1st January in the current year.  
Hunter to exceed 148cms. Riders to have attained their 16th birthday before 1st January in the current year. To be shown in a SNAFFLE BRIDLE.

**The three highest placed exhibits not already qualified in class 484 will qualify for the 2020 SWPA Novice Ridden Hack / Riding Horse / Hunter / Cob Championship.**

### **NOVICE RIDDEN CHAMPIONSHIP (ch62):**

**1st & 2nd placed exhibits from classes 480 – 484 to compete.**

## **OPEN RIDDEN CLASSES**

### **SWPA OPEN RIDDEN 2020 CHAMPIONSHIP QUALIFIERS**

**Class 485 Ridden Show Pony / Show Hunter Pony.** Mare or Gelding. Four years old and over.

# Show Pony not exceeding 148cms. Show Hunter Pony not exceeding 153cms.  
(Riders to be suitable size for pony ridden)

**The three highest placed exhibits not already qualified in class 485 will qualify for the 2020 SWPA SNUGGY HOODS Ridden Show Pony/Show Hunter Pony Championship**

**Class 486 Ridden Intermediate SRT & SHT.** Mare or Gelding. Four years old and over, exceeding 146cms, but not exceeding 158cms.

# (Riders to be suitable size for intermediate ridden)

**The three highest placed exhibits not already qualified in class 486 will qualify for the 2020 SWPA SNUGGY HOODS Ridden intermediate Championship**

**Class 487 Ridden Part Bred Mountain & Moorland.** Stallion, Mare or Gelding. Four years old and over.

# Riders any age. (see rules for Ridden Stallions)

**The three highest placed exhibits not already qualified in class 487 will qualify for the 2020 SWPA Ridden Part Bred Mountain & Moorland Championship.**

**Class 488 Ridden Pure, Part Bred or Anglo Arab.** Stallion, Mare or Gelding. Four years old and over.

# Riders any age. (see rules for Ridden Stallions)

**The three highest placed exhibits not already qualified in class 488 will qualify for the 2020 SWPA Ridden Arab Championship.**

**Class 489 Ridden Competition Pony.** Not exceeding 148cms, (excluding M&M). Stallion, Mare or Gelding. Four years old and over.

# (see rules for Ridden Stallions)

**The three highest placed exhibits not already qualified in class 489 will qualify for the 2020 SWPA Ridden Competition Pony Championship.**

**Class 490 Ridden Competition Horse.** Exceeding 148cms, (excluding M&M). Stallion, Mare or Gelding. Four years old and over.

# (see rules for Ridden Stallions)

**The three highest placed exhibits not already qualified in class 490 will qualify for the 2020 SWPA Ridden Competition Horse/Pony Championship.**

**Class 491 Ridden Competition Mountain & Moorland.** Stallion, Mare or Gelding. Four years old and over, registered with their respective Breed Society

# Stud Books. (see rules for Ridden Stallions)

**The three highest placed exhibits not already qualified in class 491 will qualify for the 2020 SWPA Ridden Competition M&M Championship.**

**Class 492 Junior Ridden Open. (exc M&M).** Mare or Gelding. Four years old and over.

# Riders not to have attained their 14th birthday n/e 148cms or 18th birthday exc 148cms before 1st January in the current year.

**The three highest placed exhibits not already qualified in class 492 will qualify for the 2020 SWPA Junior Open Ridden Championship.**

**Class 493 Ridden Riding Horse / Hack.** Mare or Gelding. Four years old and over. Riding Horse exceeding 148cms. Hack not to exceed 160cms.

# Riders of Riding Horses to have attained their 15th birthday by 1st January in the current year.

**The three highest placed exhibits not already qualified in class 493 will qualify for the 2020 SWPA Ridden Riding Horse / Hack Championship.**

**Class 494 Ridden Light/Middle/Heavyweight Hunter.** Mare or Gelding. Four years old and over.

# Riders to have attained their 16th birthday by 1st January in the current year.

**The three highest placed exhibits not already qualified in class 494 will qualify for the 2020 SWPA Ridden Hunter Championship.**

**Class 495 Ridden Open Light/Heavyweight Cob.** Mare or Gelding. Four years old and over. *This class includes Maxi Cobs*

# Riders to have attained their 15th birthday before 1st January in the current year.

**The three highest placed exhibits not already qualified in class 495 will qualify for the 2020 SWPA Ridden Cob Championship.**

**Class 496 Ridden Traditional Cob.** (Unplaited) Stallion, Mare or Gelding. Four years old and over.

# Riders any age. (see rules for Ridden Stallions)

**The three highest placed exhibits not already qualified in class 496 will qualify for the 2020 SWPA Ridden Traditional Cob Championship.**

*The first & second placed Riders in classes 485 – 496 will qualify for the TSR Ridden Championship on Saturday.*

**Class 497 Ridden X Race Horse.** Stallion, Mare or Gelding. Four years and over. Must have competed in an official race run under Jockey Club Rules.

Riders to have attained their 15th birthday before 1st January in the current year. (see rules for Ridden Stallions)

**The three highest place exhibits not already qualified in class 497 will qualify for the 2020 SWPA Ridden X Race Horse Championship.**

*Note: Coloured class to include, Skewbald, Piebald, Appaloosa, Spotted, Palomino and Dun.*

**Class 498 Ridden Coloured Pony.** Not exceeding 148cms. Stallion, Mare or Gelding. Four years old and over.

# Riders any age. (see rules for Ridden Stallions)

**Class 499 Ridden Coloured Horse.** Exceeding 148cms. Stallion, Mare or Gelding. Four years old and over.

# Riders any age. (see rules for Ridden Stallions)

**The three highest placed exhibits not already qualified in classes 498 – 499 will qualify for the 2020 SWPA Ridden Coloured Championship.**

*The first & second placed Riders in classes 498 – 499 will qualify for the TSR Ridden Championship on Saturday.*

**Class 500 Ridden Moorland or Hill Bred Ponies.** Exhibits must be Pure Bred, but not necessarily registered within their respective Breed Society.

Any age. (Ponies eligible for the Mountain & Moorland classes, **cannot** enter this class)

**The three highest placed exhibits not already qualified in class 500 will qualify for the 2020 SWPA Ridden Moorland & Hill Bred Championship.**

**Class 501 Ridden World Breeds.** (Excluding British Native Breeds, M&M Part Breds, Pure, Part Bred & Anglo Arabs) Stallion, Mare or Gelding.

Four years old and over. Riders any age. (see rules for Ridden Stallions)

**The three highest placed exhibits not already qualified in class 501 will qualify for the 2020 SWPA Ridden World Breeds Championship.**

**Class 502 Ridden Pre-Veteran.** Fifteen to Nineteen years old. Stallion, Mare or Gelding. Riders any age. (see rules for Ridden Stallions)

**Class 503 Ridden Veteran.** Twenty years old and over. Stallion, Mare or Gelding. Riders any age. (see rules for Ridden Stallions)

**The three highest placed exhibits not already qualified in classes 502 – 503 will qualify for the 2020 SWPA Ridden Veteran Championship.**

*The first & second placed Riders in classes 502 – 503 will qualify for the TSR Welsh & South West Riders Championship on Saturday.*

### **OPEN RIDDEN CHAMPIONSHIP (ch63):**

**1st & 2nd placed exhibits from classes 485 – 503 to compete.**

**CHAMPION & RESERVE to go forward to the SWPA Wales & West Festival Ridden Championship during the Friday Evening Performance**

**Don't forget you can pay your registration fees and entry fees on line at [www.showingscene.com](http://www.showingscene.com)**

## **MINI RIDDEN CLASSES**

### **SWPA NOVICE MINI RIDDEN 2020 CHAMPIONSHIP QUALIFIERS**

**Class 505 Novice Lead Rein. Pony NOT to have been placed first in any Lead Rein class before 1st January in the current year.**

- # Any type. Mare or Gelding. Four years old and over, not exceeding 122cms.  
(Mountain & Moorland ponies must be registered in their respective Pure Breed Society Stud Books)  
Riders not to have attained their, 7th birthday if riding Show/Riding type pony, 8th birthday if riding Show Hunter type pony or 9th birthday if riding an M&M type pony, before 1st January in the current year.  
To be shown in a SNAFFLE BRIDLE. The Lead Rein to be attached to the noseband only, and held in the Leader's outside hand.

**Class 506 Novice First Ridden. Pony NOT to have been placed first in any First Ridden class before 1st January in the current year.**

- # Any type. Mare or Gelding. Four years old and over, not exceeding 122cms.  
(Mountain & Moorland ponies must be registered in their respective Pure Breed Society Stud Books)  
Riders not to have attained their, 10th birthday if riding Show/Riding or Show Hunter type pony or 12th birthday if riding an M&M type pony before the 1st January in the current year. To be shown in a SNAFFLE BRIDLE.

*The three highest placed ponies not already qualified in classes 505 – 506 will qualify for the 2020 SWPA Novice Mini Ridden Championship.*

### **SWPA SNUGGY HOODS MINI RIDDEN 2020 CHAMPIONSHIP QUALIFIERS**

**Class 507 Leading Rein Pony of Show Hunter Type.** Mare or Gelding. Four years old and over, not exceeding 122cms.

- # Riders not to have attained their 9th birthday before 1st January in the current year.  
To be led by an attendant, and shown in a SNAFFLE BRIDLE, the Lead Rein to be attached to the noseband only, and held in the Leader's outside hand.

**Class 508 First Ridden Pony of Show Hunter Type.** Mare or Gelding. Four years old and over, not exceeding 122cms.

- # Riders not to have attained their 10th birthday before 1st January in the current year. To be shown in a SNAFFLE BRIDLE.

**Class 509 Open Leading Rein Pony.** Mare or Gelding. Four years old and over not exceeding 122cms.

- # Riders not to have attained their 8th birthday before 1st January in the current year.  
To be led by an attendant, and shown in a SNAFFLE BRIDLE, the Lead Rein to be attached to the noseband only, and held in the Leader's outside hand.

**Class 510 Open First Ridden Pony.** Mare or Gelding. Four years old and over not exceeding 122cms.

- # Riders not to have attained their 10th birthday before 1st January in the current year. To be shown in a SNAFFLE BRIDLE.

**Class 511 M&M Leading Rein.** Mare or Gelding. Four years old and over, not exceeding 122cms, registered in the respective Pure Breed Society

- # Stud Books of Shetland, Dartmoor, Exmoor, New Forest, Welsh A and B.  
Riders not to have attained their 9th birthday before 1st January in the current year.  
To be led by an attendant and shown in a SNAFFLE BRIDLE, the Lead Rein to be attached to the noseband only, and held in the Leader's outside hand.

**Class 512 M&M First Ridden.** Mare or Gelding. Four years old and over not exceeding 128cms, registered in the respective Pure Breed Society

- # Stud Books of Shetland, Dartmoor, Exmoor, New Forest, Welsh A and B.  
Riders not to have attained their 12th birthday before 1st January in the current year. To be shown in a SNAFFLE BRIDLE.

*The three highest placed exhibits not already qualified in classes 507 – 512 will qualify for the 2020 SWPA SNUGGY HOODS Mini Ridden Championship*

*The first & second placed Riders in classes 507 – 512 will qualify for the TSR Ridden Championship on Saturday.*

**MINI RIDDEN CHAMPIONSHIP (ch64):**

**1st & 2nd placed ponies from classes 507– 512 to compete.**

***CHAMPION & RESERVE to go forward to the SWPA Wales & West Festival Ridden Championship during the Friday Evening Performance***

## **MOUNTAIN & MOORLAND RIDDEN CLASSES**

### **SWPA JUNIOR M&M RIDDEN 2020 CHAMPIONSHIP QUALIFIER**

*All ponies in this section MUST be registered with their respective Pure Breed Societies.*

**Class 515 Junior M&M Small Breeds Ridden.** Mare or Gelding. Four years old and over, registered in their respective Pure Breed Society Stud books of

- # Shetland, Exmoor, Dartmoor, Welsh A & B. Riders not to have attained their 14th birthday before 1st January in the current year.

**Class 516 Junior M&M Large Breeds Ridden.** Mare or Gelding. Four years old and over, registered in their respective Pure Breed Society Stud books of

- # New Forest, Connemara, Dales, Fell, Highland, Welsh C & D. Riders not to have attained their 18th birthday before 1st January in the current year.

*The three highest placed exhibits not already qualified in classes 515 – 516 will qualify for the 2020 SWPA Junior Ridden M&M Championship.*

### **SWPA PONDAROSA STUD MOUNTAIN & MOORLAND RIDDEN 2020 CHAMPIONSHIP QUALIFIERS**

*All ponies in this section MUST be registered with their respective Pure Breed Societies.*

**Class 517 Ridden Shetland, Exmoor, Dartmoor.** Stallion, Mare or Gelding. Four years old and over.

- # Rider any age. (See rules for Ridden Stallions)

**Class 518 Ridden Welsh sections A & B.** Stallion, Mare or Gelding. Four years old and over.

- # Rider any age. (See rules for Ridden Stallions)

**Class 519 Ridden Welsh sections C & D.** Stallion, Mare or Gelding. Four years old and over.

- # Rider any age. (See rules for Ridden Stallions)

**Class 520 Ridden New Forest, Connemara.** Stallion, Mare or Gelding. Four years old and over.

- # Rider any age. (See rules for Ridden Stallions)

**Class 521 Ridden Dales, Fell, Highland.** Stallion, Mare or Gelding. Four years old and over.

- # Rider any age. (See rules for Ridden Stallions)

*The three highest placed exhibits not already qualified in classes 517 – 521 will qualify for the 2020 SWPA PONDAROSA STUD Mountain & Moorland Ridden Championship*

*The first & second placed Riders in classes 515 – 521 will qualify for the TSR Ridden Championship on Saturday.*

**MOUNTAIN & MOORLAND RIDDEN CHAMPIONSHIP (ch66):**

**1st & 2nd placed exhibits from classes 515 – 521 to compete.**

***CHAMPION & RESERVE to go forward to the SWPA Wales & West Festival Ridden Championship during the Friday Evening Performance***

**PLEASE REMEMBER TO MAKE SURE YOU HAVE LONG ENOUGH  
EXTENSION LEADS IF YOU REQUIRE ELECTRIC HOOK UPS**



## **WORKING HUNTER CLASSES**

**NOVICE RULES :** *Equines NOT to have been placed first in ANY Working Hunter Class before 1<sup>st</sup> January in the current year.*

### **SWPA NOVICE WORKING HUNTER 2020 CHAMPIONSHIP QUALIFIERS**

**Novice Mountain & Moorland Working Hunter Pony.**

Stallion, Mare or Gelding. Four years old and over registered in their respective Pure Breed Society Stud Books.

**Class 525 Novice M&M Working Hunter, exc. 138cms.** Riders any age. *(See rules for Ridden Stallions)*

**Class 526 Novice M&M Working Hunter, not exc 138cms.** Riders any age. *(See rules for Ridden Stallions)*

*The three highest placed exhibits not already qualified in classes 525 – 526 will qualify for the 2020 SWPA Novice M&M Working Hunter Pony Championship.*

**Novice Open Working Hunter.**

**Class 527 Novice Working Hunter Pony.** Mare or Gelding. Four years old and over. Not exceeding 153cms.

*(Riders to be suitable size for pony ridden)*

*The two highest placed equines in each height section (n/exc 122cms, 133cms, 143cms & 153cms) not already qualified in class 527 will qualify for the 2020 SWPA Novice Working Hunter Pony Championship.*

**Class 528 Novice Working Horse / Hunter / Cob.** Mare or Gelding. Four years old and over. Exceeding 148cms. Rider any age.

*The four highest placed equines not already qualified in class 528 will qualify for the 2020 SWPA Novice Working Horse Championship.*

**NOVICE WHP CHAMPIONSHIP (ch75):**

**1st & 2nd placed exhibits from classes 525 – 528 to compete.**

### **LEAD REIN / MINI WORKING HUNTER 2020 CHAMPIONSHIP QUALIFIERS**

**Class 529 Lead Rein WHP M&M and Open Types.** Mare or Gelding. Four years old and over, not exceeding 122cms. M&M types must be registered with their respective Pure Breed Society Stud Books. Riders not to have attained their 9th birthday before 1st January in the current year.

To be led by an attendant, and shown in a SNAFFLE BRIDLE, the Lead Rein to be attached to the noseband only, and held in the Leader's outside hand.

*The three highest placed M&M and Open Types not already qualified in class 529 will qualify for the 2020 SWPA Lead Rein Working Hunter Pony Championship.*

**Class 530 Cradle / Nursery Stakes M&M and Open Types.** Mare or Gelding. Four years old and over. Open types not exceeding 133cms. M&M types not exceeding 128cms. M&M types must be registered with their respective Pure Breed Society Stud Books.

Riders not to have attained their 10th birthday for Cradle Stakes and 12th birthday for Nursery Stakes before 1st January in the current year.

*The three highest placed Cradle Stakes types, Nursery Open types, and Nursery M&M types not already qualified in class 530 will qualify for the 2020 SWPA Relevant Mini Working Hunter Pony Championship.*

*The first & second placed Riders in classes 529 – 530 will qualify for the TSR Ridden Championship on Saturday.*

**MINI WORKING HUNTER CHAMPIONSHIP (ch76):**

**1st & 2nd placed exhibits from classes 529 – 530 to compete.**

### **OPEN WORKING HUNTER 2020 CHAMPIONSHIP QUALIFIERS**

**Mountain & Moorland Working Hunter Pony.**

Stallion, Mare or Gelding. Four years old and over registered in their respective Pure Breed Society Stud Books.

**Class 531 Mountain & Moorland Working Hunter, exceeding 138cms.** Rider any age. *(See Rules for Ridden Stallions)*

**Class 532 Mountain & Moorland Working Hunter, not exceeding 138cms.** Rider any age. *(See Rules for Ridden Stallions)*

*The three highest placed equines not already qualified in classes 531 – 532 will qualify for the 2020 SWPA Open M&M Working Hunter Pony Championship.*

**Open Working Hunter.**

**Class 533 Open Working Hunter Pony, n/exc. 133cms.** Mare or Gelding. Four years old and over, not exceeding 133cms.

*(Riders to be suitable size for pony ridden)*

**Class 534 Open Working Hunter Pony, exc. 133 – 153cms .** Mare or Gelding. Four years old and over. Exceeding 133cms, but not exceeding 153cms.

*(Riders to be suitable size for pony ridden)*

*The two highest placed equines in each height section (n/exc 122cms, 133cms, 143cms & 153cms) not already qualified in classes 533 – 534 will qualify for the 2020 SWPA Working Hunter Pony Championship.*

**Class 535 Open Working Horse / Hunter / Cob.** Mare or Gelding. Four years old and over. Exceeding 148cms. Rider any age.

*The four highest placed exhibits not already qualified in class 535 will qualify for the 2020 SWPA Open Working Horse Championship.*

*The first & second placed Riders in classes 531 – 535 will qualify for the TSR Ridden Championship on Saturday.*

**OPEN WHP CHAMPIONSHIP (ch77):**

**1st & 2nd placed exhibits from classes 531 – 535 to compete.**

**CHAMPION & RESERVE to go forward to the SWPA Wales & West Festival Ridden Championship during the Friday Evening Performance**

## **SWPA NATIVE MEDAL AWARDS**

*To Promote and Encourage the Showing of all types of Native Ponies*

*All ponies entered in either In-Hand or Ridden Pure Bred Native classes at all SWPA 'One Day' Shows are automatically entered into the Awards Scheme.*

*Results of which can be found on our website following each of our shows.*

*The Top Ten Ponies in both the In-Hand and Ridden sections will be invited to compete at the Finals which are held at this Championship Show*

*For more details go to our web site [www.swpa.co.uk](http://www.swpa.co.uk) and follow the links from 'Major Competitions'*



## **STYLE & PERFORMANCE CLASSES**

*PHASE ONE: Competitors will be expected to complete a Working Hunter type jumping course of nine jumps.*

*PHASE TWO: Competitors will be expected to carry out a Freestyle Test to include the following movements:*

*Halt, Walk on a long rein, Ordinary trot serpentine, Extended trot on the diagonal, Canter serpentine with change of lead, Extended canter on the diagonal. Not to exceed 2 minutes. Competitors will be marked out of 10 points for each phase. Style Mark out of 20 points.*

## **MOUNTAIN & MOORLAND STYLE & PERFORMANCE**

Stallion, Mare or Gelding. Four years old and over registered in their respective Pure Breed Society Stud Books. Riders any age.

*(See rules for Ridden Stallions)*

**Class 540 Mountain & Moorland, not exceeding 122cms.** Rider any age. *(See Rules for Ridden Stallions)*

**Class 541 Mountain & Moorland, exceeding 122cms, but not exceeding 138cms.** Rider any age. *(See Rules for Ridden Stallions)*

**Class 542 Mountain & Moorland, exceeding 138cms.** Rider any age. *(See Rules for Ridden Stallions)*

## **OPEN STYLE & PERFORMANCE. (Excluding M&M)**

**Class 543 Open Pony.** Mare or Gelding. Four years old and over. Not exceeding 133cms.

*(Riders to be suitable size for pony ridden)*

**Class 544 Open Pony.** Mare or Gelding. Four years old and over. Exceeding 133cms but not exceeding 153cms.

*(Riders to be suitable size for pony ridden)*

**Class 545 Open Horse / Hunter / Cob.** Mare or Gelding. Four years old and over. Exceeding 148cms. Rider any age.

## **STYLE & PERFORMANCE CHAMPIONSHIP (ch65):**

**1st & 2nd placed exhibits from classes 540 – 545 to compete.**

**CHAMPION & RESERVE to go forward to the Style & Performance Championship during the Friday Evening Performance**

## **SWPA BROAD FAMILY CHALLENGE CLASSES 550 - 558**

**THIS SERIES OF CLASSES 550 – 558 ARE SPONSORED BY THE BROAD FAMILY**

## **BROAD FAMILY CHALLENGE CLASSES**

*These classes are open to all exhibitors, you do NOT have to be a registered SWPA exhibitor to enter. Please read the freestyle movements required as these will be marked as shown. The Broad family hope you enjoy this competition and wish you all the very best of success.*

*Mountain & Moorland Ponies MUST be registered with their respective Breed Society Stud Books.*

**Please Note: Classes 550 - 556 will be marked as follows: -**

*Phase One: Performance & Freestyle Show 60 marks.*

*The individual Freestyle Show to include, Halt, Walk on a long rein, Ordinary trot serpentine, Extended trot on the diagonal, Canter serpentine with change of lead, Extended canter on the diagonal. Not to exceed 2 minutes. Competitors will be marked out of 10 points for each phase.*

*Phase Two: Conformation 40 marks.*

**Class 550 Ridden Mountain & Moorland Small Breeds.** Stallion, Mare or Gelding. Four years old and over. Rider any age. *(see rules for Ridden Stallions)*

**Class 551 Ridden Mountain & Moorland Large Breeds.** Stallion, Mare or Gelding. Four years old and over, Rider any age. *(see rules for Ridden Stallions)*

**Class 552 Junior Mountain & Moorland Ridden.** Mare or Gelding. Four years old and over. Riders suitable age/size for pony they ride.

**Class 553 Open Ridden Pony.** Mare or Gelding. Not exceeding 148cms. Four years old and over. Riders suitable age/size for pony they ride.

**Class 554 Open Ridden Horse/Hunter/Cob.** Mare or Gelding. Exceeding 148cms. Four years old and over. Riders any age.

**Class 555 Junior Ridden Open. (exc M&M).** Mare or Gelding. Four years old and over. Four years old and over. Riders suitable age/size for pony they ride. Riders not to have attained their 14th birthday n/e 138cms or 18th birthday exc 138cms before 1st January in the current year.

**Class 556 Senior Riders, 35 years old and over.** Horse/Pony, Any Type. Stallion, Mare or Gelding. Four years old and over.

**Class 557 Ridden Lead Rein.** Any type. Mare or Gelding. Four years old & over. Riders not to have attained their 10th birthday before 1st January in the current year. To be led by an attendant, and shown in a SNAFFLE BRIDLE, the Lead Rein to be attached to the noseband only, and held in the Leader's outside hand.

**Marked as follows:**

*Phase One: Performance & Freestyle Show 60 marks.*

*The individual Freestyle Show to include, Halt, Walk on a long rein, Ordinary trot serpentine, Extended trot on the diagonal. Not to exceed 2 minutes.*

*Competitors will be marked out of 15 points for each phase.*

*Phase Two: Conformation 40 marks.*

**Class 558 First Ridden.** Any type. Mare or Gelding. Riders not to have attained their 12th birthday before 1st January in the current year.

**SNAFFLE BRIDLE ONLY**

**Marked as follows:**

*Phase One: Performance & Freestyle Show 60 marks.*

*The individual Freestyle Show to include, Halt, Walk on a long rein, Ordinary trot serpentine, Extended trot on the diagonal, Canter with change of lead, Extended canter on the diagonal. Not to exceed 2 minutes. Competitors will be marked out of 10 points for each phase.*

*Phase Two: Conformation 40 marks.*

## **BROAD FAMILY CHALLENGE CHAMPIONSHIP (ch93):**

**1st & 2nd placed exhibits from classes 550 - 558 to compete.**

**No results will be given out at this point. The TEN highest placed equines will be invited to the presentation of awards in the Superflex Arena during the 'Evening Performance' on Friday.**

**'Evening Dress' code for the Dress code for the final judging of the Championship.**

***Please remember it is exhibitor's responsibility to be in the correct class and on time.  
Exhibitors are also expected to wear the correct riding equipment as per the show rules.***

***Thank you for your co-operation, Richard Broad (chairman)***

## **VETERAN HORSE SOCIETY REGIONAL FINAL**

**THESE FINALS WILL TAKE PLACE ON SATURDAY 5 SEPTEMBER AT THE SWPA CHAMPIONSHIPS**

**Judges: T B A**

### **VETERAN HORSE SOCIETY REGIONAL FINAL 2020**

*No Fools, Spurs, Galloping, or wearing of Face/Body Jewellery permitted. Minimum age of Handlers for In-Hand classes is 9 years. Handlers for Stallions and Ridden Competitors MUST be over 16 years of age. Competitors can NOT enter the ring once the command of trot has been given. All competitors should acquaint themselves with the Veteran Horse Society (VHS) Rules before entering, which can be found at [www.veteran-horse-society.co.uk](http://www.veteran-horse-society.co.uk) All competitors MUST be a VHS member and qualified at a VHS Area Qualifier.*

**Rider Combination MUST be the same at AREA/REGIONAL/GRAND FINAL**

**VHS1 In-Hand Pre-Veteran.** 15 – 19 Year old, Horse or Pony, Stallion, Mare or Gelding. To have qualified at a VHS area qualifier.

**VHS2 In-Hand Veteran.** 20 – 24 Year old, Horse or Pony, Stallion, Mare or Gelding. To have qualified at a VHS area qualifier.

**VHS3 In-Hand Diamond Veteran.** 25 Years old and over, Horse or Pony, Stallion, Mare or Gelding. To have qualified at a VHS area qualifier.

**VHS4 Ridden Pre-Veteran.** 15 – 19 Year old, Horse or Pony, Stallion, Mare or Gelding. To have qualified at a VHS area qualifier.

**VHS5 Ridden Veteran.** 20 – 24 Year old, Horse or Pony, Stallion, Mare or Gelding. To have qualified at a VHS area qualifier.

**VHS6 Ridden Diamond Veteran.** 25 Years old and over, Horse or Pony, Stallion, Mare or Gelding. To have qualified at a VHS area qualifier.

*The two highest placed competitors in classes VHS1 – VHS6 will receive qualification to the VHS Supreme Final in relation to the age of the veteran.*

### **VETERAN CHAMPIONSHIP PRELIMINARY JUDGING (VHSC)**

**1st & 2nd placed exhibits from classes VHS1 – VHS6 to compete.**

*Final judging of the championship will take place during the 'Evening Performance' on Saturday.*

**The Champion & Reserve Champion will qualify for the VHS Grand Final.**

*'Evening Dress' code for the Dress code for the final judging of the Championship.*

---

## **SWPA POLTIMORE PLANT LTD DRESSAGE COMPETITION** **CLASSES 560 - 568**

*PLEASE NOTE: You do not need to be registered with SWPA to enter the Dressage classes 560 - 568*



**THIS COMPETITION AND ALL ROSETTES ARE KINDLY SPONSORED BY POLTIMORE PLANT LTD**

**Please Note:** These classes are run under the SWPA General Showing Rules. However, Spurs will be permitted in these classes

*Snaffle Bridles only for classes 560, 563, 564, 565, 566, 567 & 568. Snaffle or Double Bridle permitted in classes 561 & 562.*

Individual Start Times will be posted on our website or contact Tracy on 07973317201 Wednesday 2 September between 6.00-7.30pm.

**It is your responsibility to make sure you have the correct rider age listed when entering these classes**

They will also be posted at the secretary's office. Exhibitors may be able to carry out their test out of the sequence listed below.

### **PLEASE NOTE CLASSES NOT CONFIRMED**

**Class 560 Novice 24 (2010):** Equines not to have more than 25 Elementary Points

*Special Rosettes for the two highest placed riders 16 and under before the 1st January of the current year.*

**Class 561 Elementary 44 (2002):** *Special Rosettes for the two highest placed riders 16 and under before the 1st January of the current year.*

**Class 562 Elementary Freestyle to Music:** Freestyle test to be ridden in a 20 x 40m arena

**Class 563 Freestyle to Music Novice:** Freestyle test to be ridden in a 20 x 40m arena

**Class 564 Prelim 7 (2005):** Class will be split in to two sections, Section 1 for riders 16 and under before the 1st of January of the current year, and Section 2 for riders over 16. (Equines not to have any BD points at Elementary Level or above and no BE Equines at Intermediate Level or above)

**Class 565 Introductory B, Walk Trot Test (2009):** Lead Rein & Novices not to have won ANY Preliminary Dressage Test. (True Novices only please)

**Class 566 Prelim 12 (2005):** Class will be split in to two sections, Section 1 for riders 16 and under before the 1st of January of the current year, and Section 2 for riders over 16. (Equines not to have any BD points at Elementary Level or above and no BE Equines at Intermediate Level or above)

**Class 567 Prelim 18 (2002):** Class will be split in to two sections, Section 1 for riders 16 and under before the 1st of January of the current year, and Section 2 for riders over 16. (Equines not to have any BD points at Elementary Level or above and no BE Equines at Intermediate Level or above)

**Class 568 Freestyle to Music Prelim:** All freestyle test to be ridden in a 20 x 40m arena

**Freestyle to Music: Time for each test: 4 minutes minimum to 5 minutes maximum duration. Music to be on a CD Rom and Labelled**

**Please Note: Each competitor will be responsible for providing their own music.**

### **DRESSAGE CHAMPIONSHIP**

First placed exhibits from classes 562, 563 & 568 to compete for the SWPA Poltimore Plant Dressage Freestyle to Music Championship during the 'Evening Performance' on Saturday

First placed exhibitors from classes 560, 561, 564, 565, 566 & 567 to compete for the SWPA Poltimore Plant Dressage Championship during the 'Evening Performance' on Saturday

**Dress Code: 'Evening Dress'**

**Exhibitors in both Championships will be expected to be in 'Evening Wear'**

## SWPA SHOW WITHIN A SHOW 600 - 642

### SHOW WITHIN A SHOW CLASSES

*These classes are Open to everyone.*

*You do not need to be registered with SWPA, and you do not need to qualify for these classes*

#### IN-HAND CLASSES

**Class 600 M&M Small Breeds, Youngstock.** Yearling, Two & Three year old. Registered with their respective Breed Society Stud Books.

**Class 601 M&M Small Breeds, Four and over.** Four and over. Registered with their respective Breed Society Stud Books.

**Class 602 M&M Large Breeds, Youngstock.** Yearling, Two & Three year old. Registered with their respective Breed Society Stud Books.

**Class 603 M&M Large Breeds, Four and over.** Four and over. Registered with their respective Breed Society Stud Books.

**Class 604 Pony to make Lead Rein Type.** Yearling, Two & Three year old.

**Class 605 Open Pony (exc M&M) Youngstock.** Yearling, Two & Three year old.

**Class 606 Open Pony (exc M&M) Four and over.** Stallion, Mare or Gelding.

**Class 607 Open Horse/Hunter/Cob Type, Youngstock.** Yearling, Two & Three year old. To exceed 148cms at maturity.

**Class 608 Open Horse/Hunter/Cob Type, Four and over.** Exceeding 148cms.

*Note: Coloured class to include, Skewbald, Piebald, Appaloosa, Spotted, Palomino and Dun.*

**Class 609 Coloured, Youngstock.** Any Type. Yearling, Two & Three year old.

**Class 610 Coloured, Four and over.** Any Type. Stallion, Mare or Gelding.

**Class 611 Filly / Mare, Any age.** Open to all types.

**Class 612 Colt / Stallion. Any age.** Open to all types

**Class 613 Gelding, Any age.** Open to all types

**Class 614 Potential Driving Type, Any age.** Open to all types

**Class 615 World Breeds.** (Excluding British Native Breeds, M&M Part Breds, Pure, Part Bred & Anglo Arabs) Any Age.

**Class 616 Miniature Horse / Shetland. Any age.** Miniature Horses must be registered with their respective Miniature Horse Society. Miniature Shetlands must be registered with the Shetland Pony Society stud Book.

**Class 617 Moorland or Hill Bred Ponies. Any age.** Exhibits must be Pure Bred, but not necessarily registered within their respective Breed Society.  
*(Ponies eligible for the Mountain & Moorland classes, cannot enter this class)*

#### IN-HAND CHAMPIONSHIP (ch79):

**1st & 2nd placed exhibits from classes 600 – 617 to compete.**

**CHAMPION & RESERVE to go forward to the SWPA Show within a Show Championship**

#### MINI RIDDEN CLASSES

**Class 620 Lead Rein Show Pony / Show Hunter Pony.** Mare or Gelding. Four years old and over, not exceeding 122cms.

Riders not to have attained their 9th birthday before 1st January in the current year. To be led by an attendant, and shown in a SNAFFLE BRIDLE, the Lead Rein to be attached to the noseband only, and held in the Leader's outside hand.

**Class 621 First Ridden Show Pony / Show Hunter Pony.** Mare or Gelding. Four years old and over, not exceeding 122cms.

Riders not to have attained their 10th birthday before 1st January in the current year. To be shown in a SNAFFLE BRIDLE.

**Class 622 M&M Leading Rein.** Mare or Gelding. Four years old and over, not exceeding 122cms, registered in the respective Pure Breed Society Stud Books of Shetland, Dartmoor, Exmoor, New Forest, Welsh A and B.

Riders not to have attained their 9th birthday before 1st January in the current year. To be led by an attendant and shown in a SNAFFLE BRIDLE, the Lead Rein to be attached to the noseband only, and held in the Leader's outside hand.

**Class 623 M&M First Ridden.** Mare or Gelding. Four years old and over not exceeding 128cms, registered in the respective Pure Breed Society Stud Books of Shetland, Dartmoor, Exmoor, New Forest, Welsh A and B.

Riders not to have attained their 12th birthday before 1st January in the current year. To be shown in a SNAFFLE BRIDLE.

#### MINI RIDDEN CHAMPIONSHIP (ch81):

**1st & 2nd placed exhibits from classes 620 – 623 to compete.**

**CHAMPION & RESERVE to go forward to the SWPA Show within a Show Championship**

#### RIDDEN CLASSES

**Class 625 Ridden Show Pony / Show Hunter Pony.** Mare or Gelding. Four years old and over.

Show Pony not exceeding 148cms. Show Hunter Pony not exceeding 153cms.

*(Riders to be suitable size for pony ridden)*

**Class 626 Ridden Part Bred Mountain & Moorland.** Stallion, Mare or Gelding. Four years old and over.

Riders any age. *(see rules for Ridden Stallions)*

**Class 627 Ridden Pure, Part Bred or Anglo Arab.** Stallion, Mare or Gelding. Four years old and over.

Riders any age. *(see rules for Ridden Stallions)*

**Class 628 Ridden Riding Horse / Hack.** Mare or Gelding. Four years old and over. Riding Horse exceeding 148cms. Hack not to exceed 160cms.

Riders of Riding Horses to have attained their 15th birthday by 1st January in the current year.

**Class 629 Ridden Light/Middle/Heavyweight Hunter.** Mare or Gelding. Four years old and over.

Riders to have attained their 16th birthday by 1st January in the current year.

**Class 630 Ridden Open Light/Heavyweight Cob.** Mare or Gelding. Four years old and over. *This class includes Maxi Cobs*

Riders to have attained their 15th birthday before 1st January in the current year.

**Class 631 Ridden Traditional Cob.** (Unplaited) Stallion, Mare or Gelding. Four years old and over.

Riders any age. *(see rules for Ridden Stallions)*

*Note: Coloured class to include, Skewbald, Piebald, Appaloosa, Spotted, Palomino and Dun.*

**Class 632 Ridden Coloured Pony.** Not exceeding 148cms. Stallion, Mare or Gelding. Four years old and over.

Riders any age. *(see rules for Ridden Stallions)*

**Class 633 Ridden Coloured Horse.** Exceeding 148cms. Stallion, Mare or Gelding. Four years old and over.

Riders any age. *(see rules for Ridden Stallions)*

**Class 634 Ridden Competition Pony.** Not exceeding 148cms, (excluding M&M). Stallion, Mare or Gelding. Four years old and over.

*(see rules for Ridden Stallions)*

**Class 635 Ridden Competition Horse.** Exceeding 148cms, (excluding M&M). Stallion, Mare or Gelding. Four years old and over.

*(see rules for Ridden Stallions)*

**Class 636 Ridden Pre-Veteran.** Fifteen to Nineteen years old. Stallion, Mare or Gelding. Riders any age. *(see rules for Ridden Stallions)*

**Class 637 Ridden Veteran.** Twenty years old and over. Stallion, Mare or Gelding. Riders any age. *(see rules for Ridden Stallions)*



- Class 638 Ridden World Breeds.** (Excluding British Native Breeds, M&M Part Breds, Pure, Part Bred & Anglo Arabs) Stallion, Mare or Gelding. Four years old and over. Riders any age. (*see rules for Ridden Stallions*)
- Class 639 Ridden Moorland or Hill Bred Ponies.** Exhibits must be Pure Bred, but not necessarily registered within their respective Breed Society. Any age. (*Ponies eligible for the Mountain & Moorland classes, cannot enter this class*)
- Class 640 Ridden X Race Horse.** Stallion, Mare or Gelding. Four years and over. Must have competed in an official race run under Jockey Club Rules. Riders to have attained their 15th birthday before 1st January in the current year. (*see rules for Ridden Stallions*)
- Class 641 Ridden M&M Small Breeds.** Stallion, Mare or Gelding, Four years old and over, registered with their respective Breed Society Stud Books. (*see rules for Ridden Stallions*)
- Class 642 Ridden M&M Large Breeds.** Stallion, Mare or Gelding, Four years old and over, registered with their respective Breed Society Stud Books. (*see rules for Ridden Stallions*)

**RIDDEN CHAMPIONSHIP (ch80):**

1st & 2nd placed exhibits from classes 625 - 642 to compete.

*CHAMPION & RESERVE to go forward to the SWPA Show within a Show Championship*

**SWPA 'SHOW WITHIN A SHOW' SUPREME CHAMPIONSHIP (ch82)**

*Champion & Reserve Champion from the following sections to compete:*

*In-Hand, Classes 600 – 617. Mini Ridden, Classes 620 – 623. Ridden, Classes 625 – 642*

*Champion & Reserve Champion Sashes*

***NEW for 2020!!!***

**SWPA OPEN (Non-Native) MEDAL AWARDS**

*Kindly sponsored by Team Reynolds*

*This is a NEW competition Open to all (Non-Native) Equines.*

**All Equines entered in either In-Hand Classes 25, 26 & 27 or Ridden Classes 81A – 81E at all SWPA 'One Day' Shows are automatically entered into the Awards Scheme.**

***Results of which can be found on our website following each of our shows.***

The Top Ten Equines in both In-Hand & Ridden sections will be invited to compete at the Finals which are held at this Championship Show

*For more details go to our web site [www.swpa.co.uk](http://www.swpa.co.uk) and follow the links from 'Major Competitions'*



**TSR Wales & West Regional Finals held at this Championship Show  
on Saturday 5 September 2020**



# South West Pony Association

## SWPA RIDDEN TEAM CHALLENGE

**CLASS NUMBER: SWPATEAM**

**TEAMS TO COMPRISE OF THREE RIDDEN COMBINATIONS**

**Entry Fee:** £8 for each Team Member (To be paid to the secretary at the show)

### Competition Rules:

- ✓ Obtain an Entry Card from the Secretary and record the three riders and the equine they want to use for the competition.
- ✓ Only results from the listed combinations will count.
- ✓ Horse/Pony Rider combination must stay the same for this competition.
- ✓ You can make up your own teams, from friends, family or people you may meet at the show.
- ✓ You can accumulate points on Thursday & Friday from any of the following classes:

#### Thursday:

**Superflex Arena 2:** Classes 252 – 274,

**Magic Arena 1:** Classes 280 – 292,

**Magic Arena 2:** Classes 298 – 299, 332 – 333,

**Wentworth Rings 1 & 2:** Classes 300 – 305,

**Lakeside Ring:** Classes 314 – 320,

**Ballan All Weather Arena:** Classes 560 – 564

#### Friday:

**Superflex Arena 2:** Classes 485 – 503,

**Magic Arena 1:** Classes 507 – 512, 515 – 521, 550 – 558,

**Magic Arena 2:** Classes 370 – 390

**Wentworth Rings 1 & 2:** Classes 540 – 545,

**Lakeside Ring:** Classes 529 – 535,

**Ballan All Weather Arena:** 565 – 568,



### Points are awarded as follows:

First Place = 6 points

Second Place = 5 Points

Third Place = 4 Points

Fourth Place = 3 Points

Fifth Place = 2 Points

Sixth Place = 1 Point

***Please Note: Championships & 'Evening Performance' classes will NOT count***

The Top Four Teams at the end of Friday will go forward to the Team Challenge Championship Preliminary Judging on Saturday in Magic Arena 4 at 3.30pm

### SWPA TEAM CHALLENGE CHAMPIONSHIP

- ✓ Top FOUR teams to compete.
- ✓ Each member of all four teams to complete an individual show not to exceed 2 minutes.
- ✓ Each individual show will be awarded points out of 30. These points will be added to the individual's points already gained.
- ✓ The points from each member of the individual teams will be added together and the team with the most points will win the competition.

#### **Champion Team**

***Champion Sash and £25 for each member of the team  
Each Member of the Winning Team will receive a Trophy kindly sponsored by Wellbury Park Stud***

#### **Reserve Champion Team**

***Reserve Champion Sash £15 for each member of the team***

#### **Third Placed Team**

***Third Place Rosettes for each member of the team***

#### **Fourth Placed Team**

***Fourth Place Rosettes for each member of the team***

# **TSR NAF FIVE STAR WALES & SOUTH WEST SHOWING FINALS**

**THESE FINALS WILL TAKE PLACE ON SATURDAY 5 SEPTEMBER AT THE SWPA CHAMPIONSHIPS**

**NO QUALIFICATION REQUIRED TO ENTER – OPEN ENTRY**

**RIDERS MUST NOT HAVE QUALIFIED FOR HOYS IN 2019/2020 TO BE ELIGIBLE**

**Riders/Handlers DO NOT have to be a TSR Member to compete.**

**GET YOUR TSR SASH!**

**All TSR Members in each FINAL will receive a TSR Members Sash**

## **Who Can Enter?**

The finals are *open entry no qualification required*. Riders MUST not have qualified for HOYS in 2019/2020.

## **Do I need to be a TSR Member?**

You DO NOT have to be a TSR to enter.

## **How do I Enter?**

Entries go to the show hosting the final – not to TSR. Either enter before the show by online or post OR enter on the day.

## **How are the FINALS judged?**

The TSR Champs Finals will be judged using the following Mark System. The Performance Judge will award up to 30 Marks for Performance & up to 30 marks for the Riders/Handlers Skill. The conformation judge will award up to 30 marks for Conformation & 10 for Turnout.

## **TSR NAF FIVE STAR IN HAND SHOWING FINALS**

### **JUDGE: Mrs L Randle**

#### **TSR NAF In-Hand Pony Final**

**TSR1** Any age & type for ponies not exc 153cms. Stallions to be shown by handlers 16 years & over.  
*Winner goes forward for TSR Supreme Championship. Highest placed TSR Member goes forward for TSR Members Supreme Championship*  
**Rosettes Galore!!!! 1st Rosettes to the highest placed Show Pony, Hunter Pony, Veteran, PC/RC Type, Coblet, Part Bred, Coloured & Youngstock.**

#### **TSR NAF In-Hand M&M Final**

**TSR2** Any age, open to registered & unregistered M&M ponies. Stallions to be shown by handlers 16 years & over.  
*Winner goes forward for TSR Supreme Championship. Highest placed TSR Member goes forward for TSR Members Supreme Championship*  
**1st Rosette to each breed & highest placed overall Youngstock.**

#### **TSR NAF Junior & Senior Handler**

**TSR3** Handler any age with any type/age/sex of horse/pony. Class will be split into Junior 16 years & under & Senior 17 years & over at when they enter the ring. To be judged on the ability of the Handler & presentation/ performance of the horse/pony. Conformation will NOT be taken into account. Stallions to be shown by handlers 16 years & over 1st - 6th Rosettes for Junior & Senior sections.  
All members will receive a Sash.  
*Winner goes forward to TSR Members Supreme Championship*

#### **TSR NAF In-Hand Horse Final**

**TSR4** Any age & type for horses 153cms & over. Stallions to be shown by handlers 16 years & over. Open to handlers with TSR, SWPA or Equifest card.  
*Winner goes forward for TSR Supreme Championship. Highest placed TSR Member goes forward for TSR Members Supreme Championship*  
**Rosettes Galore!!!! 1st Rosettes to the highest placed Hack, Riding Horse, Hunter, Ex Race Horse, PC/RC type, Veteran, Cob, Coloured, Part Bred & Youngstock.**

#### **TSR NAF Overall In-Hand Championship (ch95)**

1st & 2nd Prize winners from TSR1 – TSR4 come forward. To be held immediately after TSR4.

## **TSR NAF FIVE STAR RIDDEN SHOWING FINALS**

### **JUDGES: Mrs L Randle & Mrs K Bowdler**

#### **TSR NAF Coloured Horse/Pony Final**

**TSR5** Four years old & over, any height, any type (inc spots). Riders any age to be suitably mounted.  
*Winner goes forward to TSR Supreme Championship. Highest placed TSR Member goes forward to TSR Members Supreme Championship.*  
**Rosettes Galore!!!! 1st Rosettes to the highest placed Junior Rider, highest placed Plaited type horse & pony and the highest placed Native/Traditional Horse & Pony & Veteran.**

#### **TSR NAF Ridden Horse including Cobs Final**

**TSR6** Four years old & over, exc 148cm, any type. Riders any age to be suitably mounted.  
*Winner goes forward to TSR Supreme Championship. Highest placed TSR Member goes forward to TSR Members Supreme Championship.*  
**Rosettes Galore!!!! 1st Rosettes to the highest placed Hack, Riding Horse, Hunter, Ex Race Horse, PC/RC type & Junior Rider.**

#### **TSR NAF Veteran / Senior Horse or Pony Final**

**TSR7** Four years old & over, any height, any type. Horses / Ponies to be 15 years & over. Riders any age to be suitably mounted.  
*Winner goes forward to TSR Supreme Championship. Highest placed TSR Member goes forward to TSR Members Supreme Championship.*  
**Rosettes Galore!!!! 1st Rosettes to the highest placed 15 – 18yrs, 19 – 24yrs, 25yrs and over. Rosette to highest placed Junior Rider.**

#### **TSR NAF Equitation Junior & Senior Rider**

**TSR8** Any age Rider suitably mounted on any type/age/sex of horse/pony. To be judged on the riders ability and the performance & presentation of the horse/pony, conformation will not be taken into account. Class will be split into Junior 16 years & under & Senior 17 years & over when entering the ring. 1st - 6th Rosettes for Junior & Senior sections. Open only to current TSR Members - All members will receive a Sash.  
*Winner goes forward to TSR Members Supreme*

#### **TSR NAF Pony Final**

**TSR9** Four years old & over, not exc 153cm, any type. Riders any age to be suitably mounted.  
*Winner goes forward to TSR Supreme Championship. Highest placed TSR Member goes forward to TSR Members Supreme Championship.*  
**Rosettes Galore!!!! 1st Rosettes to the highest placed Show Pony, Hunter Pony, Veteran, PC/RC Type & Junior/Senior Rider.**

#### **TSR NAF Lead Rein Pony (any type) Final**

**TSR10** Four years old & over, not exc 128, any type inc M&M & plaited. Riders not to have attained their 10th birthday by 1st January in the current year .  
*Winner goes forward to TSR Supreme Championship. Highest placed TSR Member goes forward to TSR Members Supreme Championship.*  
**Rosettes Galore!!!! 1st Rosettes to the highest placed Show Pony, Hunter Pony, M&M type & PC/RC Type.**

### **TSR NAF First Ridden Pony (any type) Final**

**TSR11** Four years old & over, not exc 128, any type inc M&M & plaited. Riders not to have attained their 12th birthday by 1st January in the current year .  
*Winner goes forward to TSR Supreme Championship. Highest placed TSR Member goes forward to TSR Members Supreme Championship.*  
***Rosettes Galore!!!! 1st Rosettes to the highest placed Show Pony, Hunter Pony, M&M type & PC/RC Type.***

### **TSR NAF Mountain & Moorland JUNIOR Rider Final**

**TSR12** Four years old & over, open to registered & unregistered Shetland, Exmoor, Dartmoor, Welsh A & B, New Forest, Connemara, Dales, Fell, Highland, Welsh C & D. Riders to be 15 years and under at time of entry, to be suitably mounted.  
***Class will be split small and large breeds for the go round.***  
*Winner goes forward to TSR Supreme Championship. Highest placed TSR Member goes forward to TSR Members Supreme Championship.*  
***Rosettes Galore!!!! 1st Rosettes to the highest placed of each Breed.***

### **TSR NAF Mountain & Moorland SENIOR Rider Final**

**TSR13** Four years old & over, open to registered & unregistered Shetland, Exmoor, Dartmoor, Welsh A & B, New Forest, Connemara, Dales, Fell, Highland, Welsh C & D. Riders to be 16 years & over at time of entry, suitably mounted.  
*Winner goes forward to TSR Supreme Championship. Highest placed TSR Member goes forward to TSR Members Supreme Championship.*  
***Rosettes Galore!!!! 1st Rosettes to the highest placed of each Breed.***

### **TSR NAF Riding Club / Competition Horse/Pony Final**

**TSR14** Four years & over, any type, rider any age to be suitably mounted. To be judged on the suitability of the horse/pony as a good all-rounder, will not be required to jump. *Winner goes forward to TSR Supreme Championship.*  
*Highest placed TSR Member goes forward to TSR Members Supreme Championship.*  
***Rosettes Galore!!!! 1st Rosettes to the highest placed Horse/Pony & Junior Rider***

### **TSR NAF Novice Showing Final**

**TSR15** Riders not to have won an affiliated class for BSPS, NPS, PUK, BSHA, SH(GB). Rider any age. Horse / Pony any Type/Height

**JUDGE: Mrs K Bowdler**

### **TSR NAF Working Hunter (any type) Final**

**TSR16** Four years old & over, any type inc M&M & plaited. Riders any age to be suitably mounted. *Fences will be adjusted for each height section.*  
Cradle (128cm) Max 55cms, Nursery (133cm) Max 60cms , 133cm Max 75cm, 143cm Max 85cms, 153cm & over Max 90cms.  
*Winner goes forward for TSR Supreme Championship. Highest placed TSR Member goes forward for TSR Members Supreme Championship.*  
***Rosettes Galore!!!! 1st Rosettes to the highest placed M&M & for each height section.***

## **TSR MEMBERS SUPREME CHAMPIONSHIP (ch96)**

***TSR Members Supreme Championship: -***

*The highest placed member in each class TSR1 – TSR16 will go forward to the*

*TSR Members Supreme Championship*

*to be held during the 'Evening Performance' on Saturday*

*'Evening Dress' code for the final judging of the Championship.*

***Preliminary judging to take place after the last TSR Final***



# Showing Scene

## **Showing Made Easy**

Showing Scene is a revolutionary show management system for equine events.

As a show organiser, build and manage your equine events at the click of a button, saving you time and effort - with no more forms to process. Class results are real-time allowing you to go paperless in the rings.

For competitors, we've made it very simple to enter online, with no need to re-enter details, card payments even available on show days and a ring side feature to see what's on in each ring.

For more information contact us at [www.showingscene.com](http://www.showingscene.com)



# Evening Performances

Thursday, Friday & Saturday 'Evening Performances' are detailed below.

Please refer to the dedicated 'Evening Performance' Time Tables for approximate times.

Please also be aware that many of the classes are Preliminary Judged in adjacent rings, however be assured **ALL** exhibitors will be expected in the 'Evening Performance' Ring for Final Placings & Awards



## THURSDAY EVENING PERFORMANCE

### Preliminary Judging

OUTSIDE THE PAVILION RESTAURANT      3.00pm Start

#### **Lorry Dog Classes**

- D1    Prettiest Bitch** (*Special for Best Dressed Female Handler*)
- D2    Most Handsome Male** (*Special for Best Dressed Male Handler*)
- D3    Best Irish Brace** (*Two Totally Unalike Dogs*) (*Special for Best Young Handler, 12yrs old & under*)
- D4    Best Matched Pair** (*Special for Best Young Handler, 12yrs old & under*)
- D5    Best Fancy Dressed**

*This is the preliminary judging for the Lorry Dog classes D1 - D5. No positions will be awarded at this point and ALL exhibits will be expected in the All Weather Ring during the 'Evening Performance' for the Final Placings at approximately 6.00pm*

*Entry Fee for classes D1 - D5 £3.00. Paid at the Ring*

BALLAN RING      Not Before 5.30pm (*Please see Timetable*)

#### **Concours d'Elegance Classes**

- EP5   In-Hand Concours d'Elegance.** Mare or Gelding. Four years old and over.
- EP6   Lead Rein Concours d'Elegance.** Mare or Gelding. Four years old and over.
- EP7   Concours d'Elegance - Riders 18 years old and under.**  
Stallion, Mare or Gelding. Four years old and over. (*see rules for Ridden Stallions*)
- EP8   Concours d'Elegance - Riders over 18 years.**  
Stallion, Mare or Gelding. Four years old and over. (*see rules for Ridden Stallions*)

*This is the preliminary judging for the Concours d'Elegance classes EP5 - EP8. The classes may be split according to entries forward. No positions will be awarded at this point and ALL exhibitors will be expected in the All Weather Ring during the 'Evening Performance' for the Final Placings and Awards at approximately 7.00pm*

*Entry Fee for classes EP5 - EP8 £8.00*

## THURSDAY EVENING PERFORMANCE

SUPERFLEX ARENA ONE      Not Before 5.45pm

#### **Lorry Dog Classes - Final Placings**

*These classes will be preliminary judged outside the Pavilion at 3.00pm Friday*

- D1    Prettiest Bitch** (*Special for Best Dressed Female Handler*)
- D2    Most Handsome Male** (*Special for Best Dressed Male Handler*)
- D3    Best Irish Brace** (*Two Totally Unalike Dogs*) (*Special for Best Young Handler, 12 yrs old & under*)
- D4    Best Matched Pair** (*Special for Best Young Handler, 12 yrs old & under*)
- D5    Best Fancy Dressed**

*The winners of First & Second placed Rosettes in Classes D1 - D5 will compete for the Lorry Dog Championship during the "Evening Performance" on Saturday*

*Approximately 6.15pm*

#### **Fancy Dress**

- EP4   Fancy Dress** Mare or Gelding. Four years old and over.

*Entry Fee for class EP4 £8.00*



Approximately 6.45pm

## **Concours d'Elegance – Final Placings**

*These classes will be preliminary judged in the Ballan Ring from 5.30pm Thursday (Please see Timetable)*

### **EP5 In-Hand Concours d'Elegance.**

*Sash to the highest placed Handler 10 years old and under, kindly sponsored by Mr David Cook  
Sash to the highest placed Handler 11 years old to 16 years old, kindly sponsored by Mrs Karen Archer  
Sash to the highest placed Handler 17 year old and over, kindly sponsored by Mrs Karen Archer*

### **EP6 Lead Rein Concours d'Elegance.**

*Sash to the highest placed Rider 8 years old and under, kindly sponsored by Georgia Wood  
Sash to the highest placed Traditional Outfit, kindly sponsored by Mr David Cook  
Sash to the highest placed Period Outfit, kindly sponsored by Mrs Karen Archer*

### **EP7 Concours d'Elegance – Riders 18 years and under.**

*Sash to the highest placed Side Saddle Rider, kindly sponsored by Mr David Cook  
Sash to the highest placed Traditional Outfit, kindly sponsored by Mrs Karen Archer  
Sash to the highest placed Period Outfit, kindly sponsored by Mrs Karen Archer*

### **EP8 Concours d'Elegance – Riders over 18 years.**

*Sash to the highest placed Side Saddle Rider, kindly sponsored by Mr David Cook  
Sash to the highest placed Traditional Outfit, kindly sponsored by Mrs Karen Archer  
Sash to the highest placed Period Outfit, kindly sponsored by Mrs Karen Archer*

*The first, second & third placed horses/ponies not already qualified in classes EP5 – EP8 will qualify for the Champion of Britain Title classes to be held at Addington Manor, Buckingham on Sunday 13<sup>th</sup> September 2020. If a horse/pony has already qualified, cards may be handed down to 6<sup>th</sup> place at judge's discretion. Each qualified horse/pony will receive a qualification card in the ring which will enable the owner to enter the Championship Show, provided the owner and rider/handler are, or become registered with the Concours d'Elegance Society immediately after this show. No horse/pony registration required. For up to date information telephone the secretary on 07960 107 111 or visit our website [www.eqconcoursqb.com](http://www.eqconcoursqb.com)*

*The Two highest placed exhibits from classes EP5 – EP8 will go forward to the Concours d'Elegance Championship on Saturday Evening.*

Approximately 7.00pm

## **SWPA RMB FESTIVAL**

**'Evening Dress' code for all Exhibitors**

### **IN-HAND CHAMPIONSHIP** (EVP2)

*Champion and Reserve Champion from the following sections: -  
Open In-Hand Classes 201 – 225, M&M In-Hand Classes 230 – 242*

**Champion & Reserve Champion to go forward to the SWPA RMB Festival Championship**

**This is a qualifier for the SWPA Supreme In-Hand Championship**

***The Champion In-Hand will qualify for the 2020 SWPA Supreme In-Hand Championship.***

*(Qualification may be passed down to Reserve if the Champion has qualified)*

***The SWPA Supreme In-Hand Championship to be held on Friday Evening 4 September 2020***

### **RIDDEN CHAMPIONSHIP** (EVP3)

*Champion and Reserve Champion from the following sections: -  
Mini Ridden Classes 252 – 257, Open Ridden Classes 258 – 274, M&M Ridden Classes 280 – 284, Junior Ridden Classes 285 – 288,  
Young M&M Ridden Classes 289 – 292, Working Hunter Classes 316 – 320*

**Champion & Reserve Champion to go forward to the SWPA RMB Festival Championship**

**This is a qualifier for the SWPA Supreme Ridden Championship**

***The Champion Ridden (excluding Lead Rein & First Ridden) will qualify for the 2020 SWPA Supreme Ridden Championship.***

*(Qualification may be passed down to Reserve if the Champion has qualified)*

***The SWPA Supreme Ridden Championship to be held on Saturday Evening 5 September 2020***

### **OVERALL CHAMPIONSHIP** (EVP4)

**Champion & Reserve from the In-Hand & Ridden sections to compete**

**The winner to receive the SWPA RMB Championship Sash & Trophy**

**The reserve to receive the SWPA RMB Reserve Championship Sash**

***Please remember it is exhibitor's responsibility to be in the correct class and on time.  
Exhibitors are also expected to wear the correct riding equipment as per the show rules.***

***Thank you for your co-operation, Richard Broad (chairman)***

Approximately 8.20pm

**SWPA SENIOR RIDERS FINAL Sponsored by Mrs B M CLAYDON** (EVP18)

**'Evening Dress' code for all Exhibitors**

**First, Second & Third placed exhibits from classes 298 – 299 to compete.**

**Presentation of Awards**

**Champion £30 and Sash kindly donated by Mrs Claydon**

**Reserve Champion £20 and Sash    First Reserve £10 and Sash**

Approximately 8.15pm

**FINAL OF THE SWPA SUPREME MINI RIDDEN CHAMPIONSHIP** (SWPASUP3)

**Open to winners of 'SWPA Supreme Mini Ridden Qualifying Rosettes and Cards'**

**ENTRY FEE OF £20 MUST HAVE BEEN PRE PAID**

**All exhibitors MUST be wearing 'EVENING DRESS'**

**Method of Judging: -**      Phase One: Performance & Freestyle Show 60 marks.  
   Phase Two: Conformation / Type 30 marks.  
   Star Quality: 10 marks

**Lead Rein Competitors: Figure of eight show to include, Walk, Trot & Halt.**

*To be led by an attendant, and shown in a SNAFFLE BRIDLE, the Lead Rein to be attached to the noseband only, and held in the Leader's outside hand.*

**First Ridden Competitors: Figure of eight show to include, Walk, Trot, Canter on both leads & Halt.**

*To be shown in a Snaffle Bridle.*

**PRIZES: Rosettes to sixth place. Finalists rosettes to all entrants not placed.**

**First Prize £100    Second Prize £80    Third Prize £60    Fourth Prize £50    Fifth Prize £40    Sixth Prize £30**

***The Champion will receive the SWPA Supreme Mini Ridden Trophy***

---

**FRIDAY EVENING PERFORMANCE**

**Preliminary Judging**

**OUTSIDE THE PAVILION RESTAURANT      3.00pm Start**

**Lorry Dog Classes**

- D6    Best Rough Coat (Special for Best Dressed Male Handler)**
- D7    Best Smooth Coat (Special for Best Dressed Female Handler)**
- D8    Cutest Puppy (6 months & under)**
- D9    Fittest Veteran (10 years & over)**
- D10    Cleverest Dog**

*This is the preliminary judging for the Lorry Dog classes D6 - D10. No positions will be awarded at this point and ALL exhibits will be expected in the All Weather Ring during the 'Evening Performance' for the Final Placings at approximately 5.30pm*

*Entry Fee for classes D6 - D10 £3.00. Paid at the Ring*

**BALLAN A RING      Not Before 5.30pm (Please see Timetable)**

**Concours d'Elegance Classes**

- EP10 In-Hand Concours d'Elegance.** Mare or Gelding. Four years old and over.
- EP11 Lead Rein Concours d'Elegance.** Mare or Gelding. Four years old and over.
- EP12 Concours d'Elegance - Riders 18 years old and under.**  
Stallion, Mare or Gelding. Four years old and over. (see rules for Ridden Stallions)
- EP13 Concours d'Elegance - Riders over 18 years.**  
Stallion, Mare or Gelding. Four years old and over. (see rules for Ridden Stallions)

*This is the preliminary judging for the Concours d'Elegance classes EP10 - EP13 . The classes may be split according to entries forward. No positions will be awarded at this point and ALL exhibitors will be expected in the All Weather Ring during the 'Evening Performance' for the Final Placings and Awards at approximately 6.45pm*

*Entry Fee for classes EP10 - EP13 £8.00*

<p><b><u>PLEASE NOTE</u> ALL GROOMS MUST DRESS APPROPRIATELY FOR A CHAMPIONSHIP SHOW AND WEAR A HAT WHILST IN THE RING</b></p>
--

## **FRIDAY EVENING PERFORMANCE**

### **Preliminary Judging Continued:**

MAGIC ARENA

Not Before 7.15pm

#### **Adult & Child / Ridden Pairs**

##### **EP9 Ridden Adult & Child / Ridden Pairs**

Mare or gelding, (NO STALLIONS) Four years old and over. Adult & Child combinations MUST have at LEAST 10 years between their ages. Smaller ponies may be shown on or off the 'lead rein' Lead Rein ponies MUST NOT Canter

*This is the preliminary judging for the Adult & Child Ridden class EP9. No positions will be awarded at this point and ALL exhibitors will be expected in the All Weather Ring during the 'Evening Performance' for the Final Placings and Awards at approximately 8.45pm*

*Entry Fee for class EP9 £8.00*

## **FRIDAY EVENING PERFORMANCE**

SUPERFLEX ARENA ONE

Not Before 5.30pm

#### **Lorry Dog Classes – Final Placings**

*These classes will be preliminary judged outside the Pavilion at 3.00pm Saturday*

**D6 Best Rough Coat** (Special for Best Dressed Male Handler)

**D7 Best Smooth Coat** (Special for Best Dressed Female Handler)

**D8 Cutest Puppy** (6 months & under)

**D9 Fittest Veteran** (10 years & over)

**D10 Cleverest Dog**

*The winners of First & Second placed Rosettes in Classes D6 – D10 and the winners of First & Second placed Rosettes in Classes D1 – D5 from the Thursday 'Evening Performance' to compete for the Lorry Dog Championship*

*Approximately 6.00pm*

## **WALES & WEST FESTIVAL CHAMPIONSHIP**

**'Evening Dress' code for all Exhibitors**

### **IN-HAND CHAMPIONSHIP** (EVP5)

*Champion and Reserve Champion from the following sections: -*

*Open In-Hand Classes 431 – 458, M&M In-Hand Classes 460 – 473*

*The winner will receive the Oldacres Sweet Violet In-Hand Shield*

**Champion & Reserve Champion to go forward to the Wales & West Festival Championship**

**This is a qualifier for the SWPA Supreme In-Hand Championship**

**The Champion In-Hand will qualify for the 2020 SWPA Supreme In-Hand Championship.**

*(Qualification may be passed down to Reserve if the Champion has qualified)*

**The SWPA Supreme In-Hand Championship to be held on Friday Evening 4 September 2020**

### **RIDDEN CHAMPIONSHIP** (EVP6)

*Champion and Reserve Champion from the following sections: -*

*Open Ridden Classes 485 – 503, Mini Ridden Classes 507 – 512, M&M Ridden Classes 515 – 521, Working Hunter Classes 531 – 535*

*The winner will receive the Oldacres Sweet Violet Ridden Shield*

**Champion & Reserve Champion to go forward to the Wales & West Festival Championship**

**This is a qualifier for the SWPA Supreme Ridden Championship**

**The Champion Ridden (excluding Lead Rein & First Ridden) will qualify for the 2020 SWPA Supreme Ridden Championship.**

*(Qualification may be passed down to Reserve if the Champion has qualified)*

**The SWPA Supreme Ridden Championship to be held on Saturday Evening 5 September 2020**

### **OVERALL CHAMPIONSHIP** (EVP7)

**Champion & Reserve from the In-Hand & Ridden sections to compete**

**The winner to receive the Oldacres Sweet Violet Memorial Championship Sash**

**The reserve to receive the Oldacres Sweet Violet Memorial Reserve Championship Sash**

**PLEASE NOTE ALL GROOMS MUST DRESS APPROPRIATELY FOR A CHAMPIONSHIP SHOW  
AND WEAR A HAT WHILST IN THE RING**

Approximately 6.45pm

## **SWPA NATIVE MEDAL AWARDS FINAL Sponsored by PONDAROSA STUD**

**'Evening Dress' code for all Exhibitors**

### **IN-HAND SECTION** (EVP8)

Presentation of Awards for ponies that were preliminary judged in class NM1 in the Superflex Arena 3

All ponies forward will receive a 'Finalists Rosette'

The Champion to receive the Gold Medal plus £100 and Place Rosette

The Reserve Champion to receive the Silver Medal plus £75 and Place Rosette

First Reserve to receive the Bronze Medal plus £50 and Place Rosette

### **RIDDEN SECTION** (EVP9)

Presentation of Awards for ponies that were preliminary judged in class NM2 in the Superflex Arena 3

All ponies forward will receive a 'Finalists Rosette'

The Champion to receive the Gold Medal plus £100 and Place Rosette

The Reserve Champion to receive the Silver Medal plus £75 and Place Rosette

First Reserve to receive the Bronze Medal plus £50 and Place Rosette

Approximately 7.00pm

## **Concours d'Elegance - Final Placings**

*These classes will be preliminary judged in the Ballan Ring from 5.30pm Friday (Please see Timetable)*

### **EP10 In-Hand Concours d'Elegance.**

*Sash to the highest placed Handler 10 years old and under, kindly sponsored by Mr David Cook*

*Sash to the highest placed Handler 11 years old to 16 years old, kindly sponsored by Mrs Karen Archer*

*Sash to the highest placed Handler 17 year old and over, kindly sponsored by Mrs Karen Archer*

### **EP11 Lead Rein Concours d'Elegance.**

*Sash to the highest placed Rider 8 years old and under, kindly sponsored by Mr David Cook*

*Sash to the highest placed Traditional Outfit, kindly sponsored by Mrs Karen Archer*

*Sash to the highest placed Period Outfit, kindly sponsored by Mrs Karen Archer*

### **EP12 Concours d'Elegance - Riders 18 years and under.**

*Sash to the highest placed Side Saddle Rider, kindly sponsored by Mr David Cook*

*Sash to the highest placed Traditional Outfit, kindly sponsored by Mrs Karen Archer*

*Sash to the highest placed Period Outfit, kindly sponsored by Mrs Karen Archer*

### **EP13 Concours d'Elegance - Riders over 18 years.**

*Sash to the highest placed Side Saddle Rider, kindly sponsored by Mr David Cook*

*Sash to the highest placed Traditional Outfit, kindly sponsored by Mrs Karen Archer*

*Sash to the highest placed Period Outfit, kindly sponsored by Mrs Karen Archer*

*The first, second & third placed horses/ponies not already qualified in classes EP10 - EP13 will qualify for the Champion of Britain Title classes to be held at Addington Manor, Buckingham on Sunday 13<sup>th</sup> September 2020. If a horse/pony has already qualified, cards may be handed down to 6<sup>th</sup> place at judge's discretion. Each qualified horse/pony will receive a qualification card in the ring which will enable the owner to enter the Championship Show, provided the owner and rider/handler are, or become registered with the Concours d'Elegance Society immediately after this show. No horse/pony registration required. For up to date information telephone the secretary on 07960 107 111 or visit our website [www.eqconcoursqgb.com](http://www.eqconcoursqgb.com)*

**The Two highest placed exhibits from classes EP10 - EP13 will go forward to the Concours d'Elegance Championship on Saturday Evening.**

Approximately 8.00pm

## **SWPA OPEN MEDAL AWARDS FINAL Sponsored by TEAM REYNOLDS**

**'Evening Dress' code for all Exhibitors**

### **IN-HAND SECTION** (EVP21)

Presentation of Awards for ponies that were preliminary judged in class OM1 in the Superflex Arena 2

All ponies forward will receive a 'Finalists Rosette'

The Champion to receive the Gold Medal plus £100 and Place Rosette

*The Champion will also receive a Hamper awarded by Team Reynolds*

The Reserve Champion to receive the Silver Medal plus £75 and Place Rosette

First Reserve to receive the Bronze Medal plus £50 and Place Rosette



### **RIDDEN SECTION** (EVP22)

Presentation of Awards for ponies that were preliminary judged in class OM2 in the Superflex Arena 2

All ponies forward will receive a 'Finalists Rosette'

The Champion to receive the Gold Medal plus £100 and Place Rosette

*The Champion will also receive a Hamper awarded by Team Reynolds*

The Reserve Champion to receive the Silver Medal plus £75 and Place Rosette

First Reserve to receive the Bronze Medal plus £50 and Place Rosette

*Approximately 8.15pm*

### **BROAD FAMILY CHALLENGE FINAL** (EVP20)

**'Evening Dress' code for all Exhibitors**

**The ten highest place equines form classes 550 – 558 to compete.**

**Presentation of Awards**

**Champion £50 and Sash    Reserve Champion £30 and Sash    First Reserve £10 and Sash**

*Approximately 8.30pm*

### **STYLE & PERFORMANCE CHAMPIONSHIP** (EVP10)

**'Evening Dress' code for all Exhibitors**

**Champion and Reserve Champion from classes 300 – 305 on Thursday and 540 – 545 on Friday to compete.**

**Presentation of Awards**

**Champion £50 and Sash    Reserve Champion £30 and Sash    First Reserve £10 and Sash**

*Approximately 8.45pm*

### **SWPA PONDAROSA STUD FAMILY SHOWING CHAMPIONSHIP** (EVP12)

**All exhibitors will be expected to wear 'Evening Dress'**

**Champion and Reserve Champion from the following sections: -**

**Family Showing In-Hand classes 351 – 361, Family Showing Mini Ridden classes 370 – 375, Family Showing Ridden classes 376 – 390**

**Presentation of Awards**

**Champion: Sash, £100.00 & SWPA Family Showing Trophy**

**Reserve Champion: Sash & £60.00**

**First Reserve: Sash & £30.00**

*Approximately 9.00pm*

### **Adult & Child Ridden / Ridden Pairs – Final Placings**

**This class will be preliminary judged in the Castle A Ring at 7.15pm**

**EP9    Ridden Adult & Child / Ridden Pairs**

*Approximately 9.15pm*

### **FINAL OF THE SWPA SUPREME IN-HAND CHAMPIONSHIP** (SWPASUP1)

**Open to winners of 'SWPA Supreme In-Hand Qualifying Rosettes and Cards'**

**ENTRY FEE OF £20 MUST HAVE BEEN PRE PAID**

**All exhibitors MUST be wearing 'EVENING DRESS'**

**Method of Judging: -**    Phase One: Conformation & Freedom of Action 60 marks.  
Phase Two: Manners and Way of Going 30 marks.  
Star Quality: 10 marks

**PRIZES: Rosettes to sixth place. Finalists rosettes to all entrants not placed.**

**First Prize £250    Second Prize £100    Third Prize £80    Fourth Prize £70    Fifth Prize £60    Sixth Prize £50**

***The Champion will receive the SWPA In-Hand Trophy***

*Approximately 10.00pm*

### **Wheelbarrow Racing**

**EP15    Wheelbarrow Racing    Entry Fee £3.00 paid at the ring**

**Teams of 2, one in the wheelbarrow and one pushing.**

**Teams to complete the course laid out. Lowest time wins.**

**Very Special Rosette for Best Decorated Wheelbarrow**

**Last year this proved to be a huge success, so why not have a go and enjoy the fun.**

## **SATURDAY EVENING PERFORMANCE**

SUPERFLEX ARENA ONE Not Before 5.00pm

### **MINI RIDDEN CHAMPIONSHIP** (EVP13)

**Sponsored by Snuggly Hoods**

**'Evening Dress' code for all Exhibitors**

*Champion & Reserve from the following sections: -*

*Show Pony Mini Ridden, Show Hunter Mini Ridden and Mountain & Moorland Mini Ridden*

*to compete for the 2020 SWPA SNUGGY HOODS Mini Ridden Pony of the Year Championship.*

*Champion receives the Flaxey, Aron & Kai Trophy. Kindly Donated by Miss E. DEVEY.*

**Champion £30 Reserve Champion £20 First Reserve £10**

**CHAMPION & RESERVE to go forward to the Supreme Ridden of show Championship.**

Approximately 5.15pm

### **FINAL OF THE 'STAR FOR THE FUTURE' CHAMPIONSHIP** (EVP14)

**Sponsored by Cooper Groundworks Ltd**

**'Evening Dress' code for all Exhibitors**

*First placed exhibits from classes 106 – 121 to compete.*

**Champion £30 and Sash Reserve Champion £20 and Sash First Reserve £10 and Sash**

Approximately 5.30pm

### **CONCOURS d'ELEGANCE CHAMPIONSHIP** (EVP15)

**The Two highest placed exhibits from classes EP5, EP6, EP7, EP8, EP10, EP11, EP12, EP13 to compete for the Concours d'Elegance Championship.**

Approximately 5.45pm

### **SWPA RIDDEN TEAM CHALLENGE** (EVPTEAM)

**'Evening Dress' code for all Exhibitors**

*Top Four Teams to compete*

**Champion Team, Sash & £30 for each member Trophy for each member kindly donated by Wellbury Park Stud**

**Reserve Champion Team, Sash & £15 for each member**

**Third & Fourth Placed Teams, Rosettes for each member**

Approximately 6.00pm

### **VETERAN HORSE SOCIETY REGIONAL FINAL AWARDS** (SP3)

**'Evening Dress' code for all Exhibitors**

**Judges: T. B. C.**

*First & Second placed exhibits from classes VHS1 – VHS6 to compete.*

*The Champion & Reserve Champion will qualify for the VHS Supreme Final*

Approximately 6.10pm

### **SWPA POLTIMORE PLANT Ltd DRESSAGE FINAL** (EVP17 & EVP17a)

**Sponsored by Poltimore Plant Ltd**

**'Evening Dress' code for all Exhibitors**

**First & second placed exhibits from classes 562, 563 & 568 to compete for the Dressage to Music Championship (EVP17)**

**Presentation of Awards**

**Champion £30 and Sash Reserve Champion £15 and Sash**

**First & second placed exhibits from classes 560, 561, 564, 565, 566 & 567 to compete for the Dressage Championship (EVP17A)**

**Presentation of Awards**

**Champion £30 and Sash Reserve Champion £15 and Sash**

# The Model Pony Tack Shop

*Proud to supply Model Pony Gifts for 2020 SWPA Championships*

Visit our web site:

[www.themodelponytackshop.co.uk](http://www.themodelponytackshop.co.uk)

See how your collection can come to life.

Over 400 products, all realistic and at realistic prices

*See our stand for special show offers on everything to do with model ponies.*

*Approximately 6.30pm*

## **TSR NAF WALES & SOUTH WEST SHOWING FINALS**

*'Evening Dress' code for all Exhibitors*

*The highest placed member in classes TSR1 – TSR16 to compete. Presentation of Awards*

*Approximately 6.50pm*

## **SUPREME IN-HAND OF SHOW CHAMPIONSHIP** (SP1)

**Sponsored by Team Dodds**

*'Evening Dress' code for all Exhibitors*

*Champion & Reserve from the following sections:-*

*Open Light Horse, Part-Bred, and Mountain & Moorland to compete for the*

**South West Pony Association 2020 Supreme In-Hand of Show Championship**

**Champion £60 & Sash   Reserve Champion £30 & Sash   First Reserve £20 & Sash**

*Approximately 7.20pm*

## **SUPREME WORKING HUNTER OF SHOW CHAMPIONSHIP** (SP8)

**Sponsored by a Very Kind Supporter**

*'Evening Dress' code for all Exhibitors*

*Champion & Reserve from the following sections: -*

*Mini Working Hunter, M&M Working Hunter, and Open Working Hunter Working Hunter to compete for the*

**South West Pony Association 2020 Working Hunter Fidela Memorial Trophy.**

*Kindly Donated by Asa Luxton.*

**Champion £60 & Sash   Reserve Champion £30 & Sash   First Reserve £20 & Sash**

*Approximately 7.40pm*

## **SUPREME RIDDEN OF SHOW CHAMPIONSHIP** (SP9)

**Sponsored by Holmedown Highland Ponies**

*'Evening Dress' code for all Exhibitors*

*Champion & Reserve from the following sections: -*

*Open Light Horse, Mountain & Moorland, Part Bred, and Mini Ridden to compete for the*

**South West Pony Association 2020 Ridden Princess Diana Memorial Trophy**

*Kindly Donated by Mr & Mrs VOWLES.*

**Champion £60 & Sash   Reserve Champion £30 & Sash   First Reserve £20 & Sash**

Approximately 8.00pm

## **FINAL OF THE SWPA SUPREME RIDDEN CHAMPIONSHIP** (SWPASUP2)

**Open to winners of 'SWPA Supreme Ridden Qualifying Rosettes and Cards'**

**ENTRY FEE OF £20 MUST HAVE BEEN PRE PAID**

**All exhibitors MUST be wearing 'EVENING DRESS'**

**Method of Judging: -** Phase One: Performance & Freestyle Show 70 marks.  
Phase Two: Conformation / Type 20 marks.  
Star Quality: 10 marks

*The individual Freestyle Show to include, Halt, Walk on a long rein, Ordinary trot serpentine, Extended trot, Canter serpentine with change of lead, Extended canter.*

**PRIZES: Rosettes to sixth place. Finalists rosettes to all entrants not placed.**

**First Prize £250   Second Prize £100   Third Prize £80   Fourth Prize £70   Fifth Prize £60   Sixth Prize £50**

***The Champion will receive the SWPA Supreme Ridden Trophy***

Approximately 9.00pm

## **SOUTH WEST PONY ASSOCIATION SUPREME OF SHOW 2020** (SP10)

**Sponsored by**

**'Evening Dress' code for all Exhibitors**

**Supreme & Reserve Supreme from the following sections: -**

**Supreme of Show In-Hand, Supreme of show Working Hunter, Supreme of show Ridden to compete for the**

***South West Pony Association 2020 Supreme of Show Trophy***

**Supreme Champion £100 & Sash, Reserve Supreme Champion £75 & Sash,**

**First Reserve £50 & Sash**



## **CHAMPIONSHIP RULES**

*It is our wish that this championship show will be run in a very friendly but professional manner.  
To that end there are some extra rules for this Show.*

No Pony/Horse is allowed to be substituted.  
Correct Showing Dress to be worn in the Ring.  
All Grooms to be neatly dressed and **MUST** wear a cap or hat whilst in the ring.  
Anyone thought by the management to be incorrectly dressed may be asked to leave the ring.

## **SHOW RULES**

- 1) The Show is run under the rules of the South West Pony Association's constitution and general show rules, a copy of which can be obtained from the Secretary, Mrs Medwin Broad. Or downloaded from our website.
- 2) The organisers, SWPA and The David Broome Event Centre accept NO responsibility for any accident, loss or damage to any competitors, spectators, animals or property. It shall be a condition of entry that competitors will hold the organisers blameless and indemnify them against any loss, damage or legal proceedings.
- 3) All competitors take part at their OWN RISK and are expected to exercise due care at all times and obey all notices displayed.
- 4) The SWPA recommends that all exhibitors should have adequate personal sports insurance.
- 5) All accidents/incidents/falls should be reported to the Secretary of the individual show.
- 6) Exhibitors:  
Exhibitors may not knowingly exhibit any Pony/Horse that has been bred, sold, leased or produced by the Judge, or his/her immediate family or his/her employer, or from which financial gain has been made in the last two years. Exhibitors may be asked to produce documentation if required.  
An exhibitor may not show an equine in a competition class judged by any member of his/her immediate family, may not show under a judge for whom he/she has produced an equine within two years of the current year date, and may not ride in a class judged by someone for whom he/she has ridden in a competition within two years of the current year date.  
Exhibitors in both Ridden and In-Hand classes should wear NO Face and or Body Jewellery
- 7) Equines:  
All Ridden Ponies **MUST** be 4 years old & over.  
All Colts / Stallions two years old and over must be in possession of a current license, (unless otherwise governed by the individual Breed Society) and adequately bitted.  
All Stallions should wear 'Stallion Badges' in all showing classes  
In-Hand Stallions / Colts may NOT be led by any Juniors who have not attained their 14th birthday before 1st January in the current year.  
Reins that restrict the natural movement of a pony/horse **MUST** not be used in the ring.  
Snaffle Bridles only should be used in Lead Rein, First Ridden, Novice Ridden & Novice Ridden Working Hunter Classes. 'Wilkie Bits' may not be used as Snaffles. (Details of acceptable Snaffle Bridles can be obtained from the Secretary)  
Mountain & Moorland ponies **MUST** be shown in their natural state and trimming **MUST** comply with the respective Pure Breed Society Stud Books.  
Mountain & Moorland ponies and Part Breds must be registered with their respective Pure Breed Societies and registration numbers to be stated on the entry forms and when entered on the day, (unless otherwise stated on the individual class). These conditions also apply to horses/ponies entered as Pure Bred, Part Bred & Anglo Arabs.  
Mares with foals at foot **MUST** have attained their 4th birthday.  
All foals being shown **MUST** be a minimum of three weeks old on the day of the show. No Foals to be Clipped, Lunged or shown Bitted. Mountain & Moorland Foals must be eligible for entry into their respective Pure Breed Society Stud Books.  
**SWPA advise all equines are vaccinated against Equine Influenzas. We reserve the right to check passports of all equines attending the show at any time. Please be aware there may be additional rules applied by The Davis Broome Event Centre. These will be posted on the venue's web site.**
- 8) Riders / Handlers:  
Any Pony Stallion not exceeding 138cms or Small Breed Mountain & Moorland Stallions may NOT be ridden by juniors who have NOT attained their 12th birthday before 1st January in the current year at any show affiliated to South West Pony Association. Stallions exceeding 138cms or Large Breed Mountain & Moorland Stallions may NOT be ridden by Juniors who have NOT attained their 14th birthday before 1st January in the current at any show affiliated to South West Pony Association. *(unless otherwise governed by the individual Breed Society)*  
Junior Handlers of equines in all In-Hand classes, aged 14 years and under should wear correctly secured current British Standard skull caps/riding hats.  
All Children **MUST** have attained their 3<sup>rd</sup> birthday by 1<sup>st</sup> January in the current year before competing in ANY ridden classes, and must comply with the upper limit of the class entered, and be prepared to supply a copy of their birth certificate if requested.  
Riders **MUST** be within the correct age limits for the type of Horse/Pony ridden for the qualification to be valid.  
In Ridden Classes, if a rider falls off at any time whilst in the ring, both pony/horse and rider **MUST** leave the ring, rider dismounted, and take no further part in the class.  
Correct British Standard Headgear conforming to European VG1 and/or PAS015 both with BSI Kitemarking or current standards to be worn at all times when mounted, with chinstraps from 3 points on the hat fastened.  
NO Spurs to worn in any ridden class, and Showing Canes **MUST** not exceed 30".  
In Lead Rein classes the lead rein should be attached to the noseband only, and held in the Leader's outside hand.
- 9) Judges:  
The Judges' decision is final.
- 10) Welfare of Equines:  
If an equine is deemed to be being mistreated in any way whilst at the show ground, the person or persons responsible may be asked to leave the show ground and may be reported to the authorities. The SWPA is also supporting the appropriate size/weight of rider for the equine they are riding.
- 11) Behaviour:  
Behaviour by an exhibitor or his/her servants deemed unsporting or unreasonable, may be requested to leave the showground.  
Any animal which in the opinion of the judge, is deemed out of control will be requested to leave the ring and/or the show ground.  
Any exhibitors or their servants seen using social media to air disputes will be requested to remove all their exhibits from the showground and forfeit any entry fees paid.  
The organisers reserve the right to refuse entry of persons and or equines at the management's / secretary's discretion and without assigning a reason.  
All Dogs **MUST** be kept on leads at all times.
- 12) Objections:  
Objections must be in writing and given to the Secretary within 30 minutes of the completion of the relevant class and accompanied with a fee of £15.00 (refundable if the objection is upheld)
- 13) Parents should be aware that there will be official photographers at this show, and if they do not want their children photographed, THEY **MUST** make their own arrangements with the photographers. Official photographers **ONLY** will be allowed in the rings.
- 14) Entry Fees:  
Entry Fees including all associated fees are not refundable.

***If you have any queries regarding the rules please contact Medwin or Richard Broad on 01934 633304***