

172nd



President: Mr R Clothier

Mid-Somerset Show

18th August 2024

Mid-Somerset Showground, Shepton Mallet, BA4 4GF

FLOWER SHOW AND ARTS & CRAFTS SCHEDULE



Enter
Online via
Showing
Scene

Entry Closing Date:
29th July

Scan me



www.midsomersetshow.org.uk



ARTS AND CRAFT, FLOWER SHOW AND FLORAL ART

Chief Stewards - Mrs Lyn Steel, Mrs Ruth Green & Mrs Ann Strik

Entry fee: **£1.00 per class**
Children's Classes **ENTRY FREE**

Prizes

Adult Classes: 1st - £5.00, 2nd - £3.00, 3rd - £2.00
Children's Classes: 1st - £2.00, 2nd - £1.50, 3rd - £1.00

Points: 1st... 4pts 2nd... 2pts 3rd... 1pt

Each exhibitor will be credited with points for no more than one prize in each class

GENERAL RULES AND 'HOW TO ENTER'

1. All exhibits are staged at the sole risk of the exhibitor.
2. A class may be cancelled / amalgamated if there are insufficient entries.
3. The Judge may withhold prizes where there are insufficient entries.
4. The Judge's decision is final.
5. No persons shall be with the judges whilst they are executing their duties other than a steward.
6. By completing an entry form, you must agree to the rules, regulations and conditions of the Society.
7. Each exhibit must be listed on the correct entry form provided.
8. **THE COMPLETED FORM MUST REACH THE SHOW OFFICE BY MONDAY 29TH JULY 2024, AND ACCOMPANIED BY THE CORRECT FEE.**
9. Any objection must be made in writing and handed to the Chief Steward before 2.00pm on Show Day.
10. The entry numbers to be attached to each exhibit will be provided in the Arts and Crafts marquee when staging entries.
11. Each exhibit is to be the home made and original work of the exhibitor and must be entered in his/her name.
12. No exhibit that has previously won a prize at the Mid-Somerset Show can be entered.
13. An exhibit may be entered in only one class.
14. If more than one entry is made in a class. Please enter each on the entry form. **NO MORE THAN TWO ENTRIES PER EXHIBITOR IN ANY ONE CLASS.**
15. No advertising matter can be staged with any exhibit.
16. An exhibit can only be handled by show officials between the times of staging and its time of removal.
17. Disposal of any exhibits remaining after 6.00pm will be at the discretion of the Chief Steward.
18. Prize winners must collect their prize vouchers from the Reception desk in the show tent to redeem their prize money from the Information office on show day.
19. Any prize money not collected on show day will be forfeited.
20. The exhibitor ticket for each entry must be shown to the Steward when an exhibit is removed.
21. The Children's Section is open to children aged 16 years and under on the day of the show, except where otherwise stated.
22. Please note that exhibitors' names will appear in the catalogue unless the Show Secretary is informed otherwise.
23. **EXHIBITS CAN NOT BE COLLECTED UNTIL 5PM.**
24. Cups will be presented at 4.30 pm in the Arts & Craft Marquee.
25. Cups and trophies will remain the property of Mid-Somerset Show Committee.
26. The cost of engraving trophies is the responsibility of the recipient.
27. The Committee shall have the power to decide all matters not provided for in these rules and on all matters on which there is any question. Their decision is final.
28. **ALL EXHIBITS TO BE SET UP IN THE MARQUEE AT THE MID SOMERSET SHOWGROUND BETWEEN 8.00 AM TO 12.00 PM ON SATURDAY 17TH AUGUST.**
29. Judging will commence at 1.00pm on Saturday 17th August. Only Judges and Officials will be permitted in the marquee from then until the Show is opened to the public at 9.30am on Sunday 18th August.
30. Verbal or physical abuse and threats towards our stewards, volunteers, contractors and staff will not be tolerated under any circumstances. If you display such behaviour, you will be asked to leave the show site immediately and reported to the police.

Please return your completed entry form and fee to:

The Show Office, Mid Somerset Showground, Cannards Grave Road, Shepton Mallet BA4 4GF

CUPS & TROPHIES TO BE AWARDED:

Adult Classes:

The Tom Green Memorial Challenge Cup for most points in the Vegetable, Fruit and Flower Show.

The Mid-Somerset show Godden Perpetual Salver for the Most points in the flower section.

A Perpetual Trophy presented by the National Westminster Bank for the Best Exhibit in Floral Art.

Charles Hitchens Challenge Trophy for the most points in the Adult Floral Art

The Liz Abraham Memorial Trophy will be presented to the winner of the Class 2032.

A Perpetual Challenge Cup presented to the Society by Mrs M Vagg will be awarded to the exhibitor gaining the most points in the Preserves and Adult Cookery Classes.

The Glastonbury Abbey Cup will be presented to the winner of Class 2044.

The James Allen Trophy for best flower in show from class winners of classes 2001 to 2011

The Denela's Cup - Best Home Produce Exhibit in Cookery

The Hylda Page Perpetual Challenge Cup will be awarded to the exhibitor gaining the most points in the stitch craft section.

The Vi Ham Cup will be presented to the competitor gaining the most points in the Art Section.

The Philip Ledbury Perpetual Trophy for the Best Piece of Contemporary Art.

The Dorothy Whittock Challenge Cup will be awarded to the exhibitor with most points in the photography classes.

Children's Classes:

The MASG Perpetual Trophy will be presented to the best exhibit.

Chamber of Commerce Perpetual Challenge Cup will be presented to the winner with most points in the Children's Section.

The KA Moores Perpetual Challenge Cup will be presented to the Best Exhibit in the Children's Section.

Joan Britten Trophy will be presented to the winner of class 2098.

The ICI Polyurethanes Cup will be awarded to the best photograph in the children's section.

FLOWER SHOW

Mr Patrick Baker, Shepton Mallet (Vegetables Judge)
Flower Show TBC

The Tom Green Memorial Challenge Cup for most points in the Vegetable, Fruit and Flower Show.

The Mid-Somerset show Godden Perpetual Salver for the Most points in the flower section.

The James Allen Trophy for best flower in show from class winners of classes 2001 to 2011

Special rules:

All vases, bottles, receptacles etc are to be supplied by exhibitors.

- Class 2001** Dahlias, Pom Pom, 1 vase
- Class 2002** Dahlias, cactus, 1 vase
- Class 2003** Dahlias, Decorative, 1 vase
- Class 2004** Perfect for Pollinators, 1 vase, 3 blooms eg lavender, single dahlias, cosmos **Open to all ages.**
Sponsored by Shepton Mallet Hort Soc £10 Garden Voucher for winner
- Class 2005** Roses - 3 blooms.
- Class 2006** Sweetpeas - 1 vase, 6 spikes. Mixed or same colours.
- Class 2007** Fuschia, in an 8inch pot, any type **sponsored by Fosseway Gardening Club**, £10 for the winner
- Class 2008** Trailing Geranium (Pelargonium) of any colour - potted
- Class 2009** Upright Geranium (Pelargonium) of any colour - potted
- Class 2010** A vase of informally presented cottage flowers.
- Class 2011** Flowers, any single variety, 1 vase 3 blooms
- Class 2012** A house plant or succulent- any variety of succulent, cactus or other plant that must be grown indoors including in a conservatory or greenhouse
- Class 2013** 3 potatoes of the same variety- any colour, any variety
- Class 2014** 3 carrots
- Class 2015** 3 onions not exceeding 250g each
- Class 2016** 3 onions over 250g each
- Class 2017** 3 beetroot
- Class 2018** 6 runner beans
- Class 2019** 6 french beans
- Class 2020** 3 dessert apples, one dish of 3
- Class 2021** 6 tomatoes - cherry of any colour
- Class 2022** 3 tomatoes - any variety, any colour, of one type. Excluding Cherry Tomatoes
- Class 2023** 3 different herbs in bunches, not in flower. **Sponsored by Glastonbury Abbey.**
- Class 2024** 3 leeks
- Class 2025** 3 matching courgettes, KI flowers optional, not exceeding 15 cm
- Class 2026** 1 pair long cucumbers
- Class 2027** Basket or tray of salad. **Maximum size: 46cm x 30cm**

NOVELTY CLASSES

- Class 2028** Oversized vegetable. Any variety. **Sponsored by Glastonbury Abbey.**
- Class 2029** Plate of 5 chillies
- Class 2030** A collection of vegetables. 5 different kinds of vegetable displayed attractively in a maximum space of 92cm x 68cm. No less than 2 of each vegetable variety to be used.

FLORAL ART

Mrs Sue Millard, Glastonbury (Judge)

A Perpetual Trophy presented by the National Westminster Bank for the Best Exhibit in Floral Art.
Charles Hitchens Challenge Trophy for the most points in the Adult Floral Art
The Liz Abraham Memorial Trophy will be presented to the winner of Class 2040.

Please note: Children's classes are now listed in the Children's Section of the schedule.

- Class 2031** Flowers from your garden. Space allowed 64cm
- Class 2032** Shepton Mallet Carnival, an arrangement inspired by this special event. Flowers, foliage and accessories. Space allowed 64 cm.
- Class 2033** Wicker basket, an arrangement of flowers and foliage in a basket. Space allowed 64cm.
- Class 2034** An Arrangement in a tea pot
- Class 2035** An Arrangement on a cake stand over 10 cm but under 32 cm in width, depth & height.
- Class 2036** A White lace floral arrangement. 10cm x 10cm x 10cm

PRESERVES

Mrs Helen Dauncey, Shepton Mallet (Judge) and Mrs Debbie Harris, Castle Cary (Judge)

A Perpetual Challenge Cup presented to the Society by Mrs M Vagg will be awarded to the exhibitor gaining the most points in the Preserves and Adult Cookery Classes.
The Glastonbury Abbey Cup will be presented to the winner of Class 2045.

Special rules:

No advertising on jars or lids.

Jars to be approximately a standard clear 1lb size.

No kilner jars to be used.

Please note only 2 entries per exhibitor can be entered into any one class.

Each separate entry must be entered either online or on the entry form.

- Class 2037** Jar of Raspberry Jam
- Class 2038** Jar of Blackcurrant Jam
- Class 2039** Jar of Jam any other variety
- Class 2040** Jar of Marmalade - any variety
- Class 2041** Jar of Fruit Jelly
- Class 2042** Jar of Fruit Curd
- Class 2043** Jar of pickles made in vinegar
- Class 2044** Jar of Chutney - any variety. Must be at least 2 months old
- Class 2045** Homemade non-alcoholic drink eg. apple juice, elderflower cordial. Bottle not to exceed 300ml.
Sponsored by Glastonbury Abbey.
- Class 2046** Homemade flavoured spirit. eg. Sloe Gin, Damson Brandy etc. Bottle not to exceed 300ml.

COOKERY

Mrs Hilary Clark, Shepton Mallet (Judge)

A Perpetual Challenge Cup presented to the Society by Mrs M Vagg will be awarded to the exhibitor gaining the most points in the Preserves and Adult Cookery Classes.

The Denela's Cup - Best Home Produce Exhibit in Cookery

Special rules:

All cookery entries must be covered with cling film, cellophane or in a clear plastic bag.

Please note only 2 entries per exhibitor can be entered into any one class.

Each separate entry must be entered either online or on the entry form.

If you wish to enter gluten free, vegan or lactose free please specify

- Class 2047** Somerset Apple cake (square or round). Please follow recipe supplied on pg 11
- Class 2048** Victoria sandwich. Please use 6 eggs & the equivalent in flour, fat & sugar. A filling of jam.
To be baked in two tins measuring 20cm diameter.
- Class 2049** Shortbread biscuits. Please follow recipe supplied on pg 11
- Class 2050** 5 pieces of tiffin
- Class 2051** A Lemon Drizzle cake
- Class 2052** A cake of choice to include a vegetable. Please state the vegetable.
- Class 2053** A swiss roll- jam or cream filling.
- Class 2054** A fruit pie- must have a solid pastry top and bottom
- Class 2055** A selection of Sweets- 5 different sweets or chocolates to be presented on a plate or in a box.
Eg: fudge, toffee, coconut ice, chocolates, pralines, peppermint cream etc
- Class 2056** 5 sausage rolls
- Class 2057** 5 savoury scones
- Class 2058** 5 Plain or fruit scones
- Class 2059** 6 Cottage rolls or 1 cottage loaf
- Class 2060** Flavoured savoury loaf

HANDICRAFT

Mrs Christine Jackson, Shepton Mallet (Judge) and

Mrs Celia Clark, Shepton Mallet (Judge)

The Hylda Page Perpetual Challenge Cup will be awarded to the exhibitor gaining the most points in the stitch craft section.

Special rules:

All garments to be unworn and not entered at a previous Mid-Somerset Show.

Please note only 2 entries per exhibitor can be entered into any one class.

Each separate entry must be entered either online or on the entry form.

- Class 2061** Knitted Socks
- Class 2062** Hand knitted garment for an adult
- Class 2063** Hand knitted garment for a child or baby
- Class 2064** Sewn garment for an adult
- Class 2065** Sewn garment for a child
- Class 2066** Crocheted garment for an adult
- Class 2067** Crocheted garment for a child
- Class 2068** A Crocheted animal, bird or flower
- Class 2069** A knitted or crocheted scarf

- Class 2070** A handmade bag- sewn, knitted or crocheted.
- Class 2071** Cross stitch: an article worked in silk or cotton. Maximum size: 20cm square
- Class 2072** A quilt for a baby cot
- Class 2073** A piece of needle felting
- Class 2074** Upcycle: make something new from old
- Class 2075** A woven item
- Class 2076** A Handmade wooden bird box- not to exceed 30cm x 30cm x 30cm
- Class 2077** Make a bookmark from any medium
- Class 2078** Decorated glass
- Class 2079** Handmade greeting card. Using any materials

CRAFTY CHICKEN COMPETITION

This class will be staged in the Fleece, Fodder & Poultry Tent in the Livestock Field either on Saturday 17th August between 8.00 am and 1.00 pm or by 9.00 am on Sunday 18th August.

PLEASE DELIVER TO THIS MARQUEE

Class 164 Crafty Chicken - using recycled materials make your very own chicken.
TO BE DELIVERED TO THE FLEECE, FODDER & EGG MARQUEE

ART

Mrs Chrys Henning, Shepton Mallet (Judge)
 and Ms Jeffy Salt, Shepton Mallet (Judge)

The Vi Ham Cup will be presented to the competitor gaining the most points in the Art Section.
The Philip Ledbury Perpetual Trophy for the Best Piece of Contemporary Art.

Special rules:

Sizes of exhibits to be stated on entry form.

Where needed all should be corded for hanging.

All entries must be the work of the exhibitor.

All exhibits are not to have been entered at a previous Mid-Somerset Show.

Please note only 2 entries per exhibitor can be entered into any one class.

Each separate entry must be entered either online or on the entry form.

- Class 2080** A Pencil illustration
- Class 2081** A picture in any drawing media or pen and ink of an animal
- Class 2082** A picture in oils: any subject
- Class 2083** A picture in acrylic: any subject
- Class 2084** A picture in watercolours: any subject
- Class 2085** A picture in mixed media: any subject. When staging please supply written/typed card giving details of picture title and list of media used.
- Class 2086** A picture in pastels and/or charcoal
- Class 2087** A 2D Collage - not to exceed 30" by 22"
- Class 2088** A 3 - dimensional sculpture or carving (eg clay, bronze, wood, pottery etc)
- Class 2089** D-Day - An original verse (not exceeding 8 lines)
- Class 2090** Sheep - an original limerick consisting of five lines

ENTRIES FROM ONE PERSON ON ONE FORM

Total entry fees:	£	
First Aid donation:	£	1.00
Membership Subscription for 2024 : £20 (single) / £30 (double):		
Catalogue vouchers £2.50 each (show day price £3):		
Total Payable:	£	

Please use: A&C + the surname as it appears on the entry form as the reference.

CONTINUATION FORM[illegible]

Total from previous page:

Total payable: £

Name of Exhibitor:

Please ensure that full details are completed overleaf.

RECIPES TO BE USED

Somerset Apple Cake

Ingredients:

115g unsalted butter, diced and chilled, plus extra for the tin
225g self-raising flour
2 tsp ground cinnamon
115g light brown sugar
1 large egg, beaten
6-8 tbsp milk
225g Bramley or Granny Smith apples, peeled, cored and diced
100g sultanas
2 tbsp demerara sugar (optional)

Method:

STEP 1

Heat the oven to 180C/160C fan/gas 4. Butter and line a deep 20cm cake tin with baking parchment.

STEP 2

Mix the flour and cinnamon together in a large bowl. Add the butter and rub into the flour using your fingers, until it resembles fine breadcrumbs. Stir in the light brown sugar. Beat in the egg followed by 6-8 tbsp of milk – add it gradually until you have a smooth, thick batter.

STEP 3

Add the apples and sultanas and mix to combine. Scrape the batter into the prepared tin and gently level out. Sprinkle over the demerara sugar, if using, and bake for 30-40 mins or until golden and a skewer inserted into the middle comes out clean.

STEP 4

Allow to cool in the tin for 15 mins and then carefully turn out onto a wire rack to cool further.

Class 2057 Shortbread Biscuits (Makes about 18)

Ingredients.

100g butter
50g caster sugar
150g plain flour (sifted)
Extra caster sugar for dusting

Method

1. Turn on oven gas mark 2, 150 C
2. Lightly grease a baking tray.
3. Beat the butter to a soft consistency, then beat in the sugar. Beat in the sifted flour.
4. Bring the mixture together with your hands to form a paste.
5. Transfer to a board lightly dusted with caster sugar, quickly and lightly roll out until 3mm thick.
6. Use a 6cm fluted cutter to cut the biscuits out.
7. Place on the baking tray.
8. Bake for about 25 - 30 minutes.
9. Cool the biscuits on a wire rack.
10. Dust biscuits with some caster sugar and place in an airtight tin to keep them crisp.

PHOTOGRAPHY

The Mid Somerset Photography Club (Judge)

The Dorothy Whittock Challenge Cup will be awarded to the exhibitor with most points in the photography classes.

Special rules:

Each photograph must have been taken by the exhibitor.

Each photograph must not have been entered before at the Mid-Somerset Show.

Each exhibitor cannot enter more than 2 photographs in each class.

All categories can be colour/black and white, film or digital, not exceeding 7 x 5 inches mounted on a piece of card not exceeding A5.

Each individual photograph must be entered either online or on the entry form.

Class 2091 The King's Coronation – A day of Celebration

Class 2092 Powered by steam – Show us some steam driven machinery

Class 2093 A Moment in time – a snapshot of a favourite or treasured moment

Class 2094 Travelling the world – where have your travels taken you

Class 2095 A Portrait – In black & white

Class 2096 My Worst Photo – Just for fun, we don't get it right every time

Class 2097 The Farmyard – They come in all sizes

Class 2098 Underwater scenes – What's hidden below

Class 2099 Domestic cats – A portrait of a pet cat

POULTRY PHOTOGRAPHY CLASSES

Entry fee: £1.00

Prizes: 1st £5.00, 2nd £3.00, 3rd £2.00

This class will be staged in the Fleece, Fodder & Poultry Tent in the Livestock Field either on Saturday 17th August between 8.00 am and 1.00 pm or by 9.00 am on Sunday 18th August.

PLEASE DELIVER TO THIS MARQUEE

Class 165 Photograph of a cockerel

Class 166 Photograph of any poultry group

TO BE DELIVERED TO THE FLEECE, FODDER & EGG MARQUEE

2025 Photography Classes – the following will be in the 2025 schedule

Historical Buildings – take a picture of one of the many historical buildings in the UK

Horses at Work – these magnificent animals work in many ways eg: Showjumping, Racing, Ploughing etc.

Snouts – animal noses

Mountains & Moorlands – The most dramatic views

An English Rose – a picture of a single rose bloom

Shepton Mallet Carnival – capture the floats at this iconic event

Collett Park – the hidden gem of Shepton Mallet

Spiders – show us the beautiful homes these amazing creatures create for themselves

SPECIAL EDUCATIONAL NEEDS AND LEARNING DIFFICULTIES

Mrs Chrys Henning, Shepton Mallet (Judge)
Jeffy Salt, Shepton Mallet (Judge)

Open to all ages – Free entry

The **MASG Perpetual Trophy** will be presented to the best exhibit.

NO MORE THAN TWO ENTRIES PER EXHIBITOR IN ANY ONE CLASS.

Please state exhibitor age on entry form.

- Class 2100** Handmade model on a board – any medium except Lego. No bigger than 45cm
- Class 2101** Photograph of a train, tractor or a place I like to be - photography class special rules apply.
- Class 2102** An upcycled item
- Class 2103** A painting of any animal or bird. Max size: A3
- Class 2104** A fruit crumble- any fruit filling with a crumble topping
- Class 2105** 5 Rice Crispy cakes- any flavour eg: Chocolate

CHILDREN'S SECTION

FREE ENTRY

Prizes in all children's classes: 1st - £2.00, 2nd - £1.50, 3rd - £1.00
Points will be awarded as follows: 1st: 4 points, 2nd: 2 points, 3rd: 1 point

Chamber of Commerce Perpetual Challenge Cup will be presented to the winner with most points in the Children's Section.

The KA Moores Perpetual Challenge Cup will be presented to the Best Exhibit in the Children's Section.

Children may enter all classes at the show but only the children's section will be judged taking age into account.

SPECIAL RULES

All exhibits must be the work of the exhibitor.

All exhibits are not to have been entered at a previous Mid-Somerset Show.

A separate entry form to be completed for each child.

Where required exhibits should be corded for hanging.

Please note only 2 entries per exhibitor can be entered into any one class.

FLORAL ART & FLOWER SHOW

Floral Show: Mr Harry Godden, Shepton Mallet (Judge)
Floral Art: Mrs Sue Millard, Glastonbury (Judge)

Joan Britten Trophy will be presented to the winner of class 2098

All classes for children 16 and under.

- Class 2106** A single dahlia any size, any kind (eg single or Anemone) in a bottle or vase of your choice.
Sponsored by **Shepton Mallet Hort Soc** £10 Garden Voucher for winner
- Class 2107** Cress Head
- Class 2108** A flower arrangement in a jam jar. Sponsored by Fosseway Gardening Club, £5 for the winner
- Class 2109** Garden on a plate
- Class 2110** Make an animal from vegetables- any animal using any vegetables

PHOTOGRAPHY

The Mid Somerset Camera Club (Judge)

Prize: **The ICI Polyurethanes Cup** will be awarded to the best photograph in the children's section.

Special rules:

All categories can be colour or black and white, film or digital.

Exhibits must not exceed 18 x 13 cm and are to be mounted on a piece of card not exceeding A5.

No more than **2** entries per child per class.

Each photograph must be entered individually either online or on the entry form.

Class 2111 Farm animals - who is your favourite farm animal

Class 2112 My Favourite Place – somewhere is really enjoy spending time

Class 2113 My favourite Person – in black & white

Class 2114 A Trip – somewhere I have visited

Class 2115 Landscape – A view from afar

Class 2116 My worst photo – the one I got wrong! We don't get it right every time

2025 Photography Classes – the following will be in the 2025 schedule

Smell the Roses – take a picture of your favourite flower

Woodlands – take a picture on a woodland walk

Circles – there are round objects everywhere

Wildlife – capture an animal in its natural habitat

COOKERY

Mrs Hilary Clark, Shepton Mallet (Judge)

Class 2117 5 cheese straws - homemade

Class 2118 6 chocolate crispy cakes

Class 2119 Create a pizza face. (Either pre-prepared or homemade base can be used).

Class 2120 Decorate a cake using an Animal theme (either pre-prepared or homemade cakes can be used)

Class 2121 6 butterfly cakes

HANDICRAFT

Mrs Chrys Henning, Shepton Mallet (Judge) & Mrs Jeffy Salt, Shepton Mallet (Judge)

7 and under on day of the show Please state age on entry form.

Class 2122 A model made from plasticine or play-doh

Class 2123 A Potato print

Class 2124 A Pasta picture

Class 2125 A painted stone

Class 2126 A drawing of where you live

Class 2127 Handwriting competition (poem supplied below)

Jack And Jill

Jack and Jill went up the hill
To fetch a pail of water
Jack fell down and broke his crown,
And Jill came tumbling after.

8 to 11 year olds. Age on the day of the show Please state age on entry form.

- Class 2128** A natural Collage- make a collage using any natural items eg: leaves, feathers, shells etc.
- Class 2129** Make a Dinosaur using recycled materials
- Class 2130** A sewn, knitted or crochet scarf
- Class 2131** Something interesting in a matchbox
- Class 2132** Decorate a wooden spoon
- Class 2133** An item in cross stitch
- Class 2134** Handwriting competition (poem supplied below)

From a Railway Carriage by Robert Louis Stevenson

Faster than fairies, faster than witches;
Bridges and houses, hedges and ditches;
And charging along like troops in a battle,
All through the meadows the horses and cattle:
All of the sights of the hill and the plain
Fly as thick as driving rain;
And ever again, in the wink of an eye,
Painted stations whistle by.

12 to 16 years old. Age on the day of the show. Please state age on entry form.

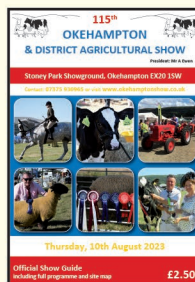
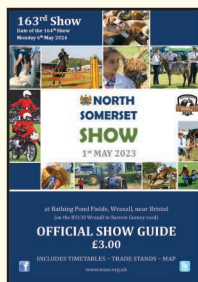
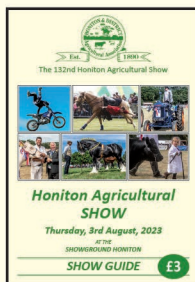
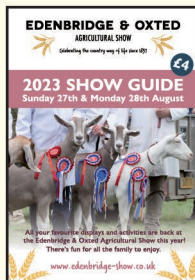
- Class 2135** Make anything out of lolly sticks
- Class 2136** A sewn, knitted or crochet bag
- Class 2137** Recycling- make something new from old.
- Class 2138** Design & make a phone case- to fit any smartphone using any materials- no smart phones to be left on display
- Class 2139** Do a painting of a tree- any medium, max size A4
- Class 2140** An item in cross stitch
- Class 2141** An item in needle felt
- Class 2142** Write an original poem- subject: Somerset
- Class 2143** Write a limerick- subject: King Arthur. **Sponsored by Glastonbury Abbey.**

GROUP PROJECT

Open to all schools, learning groups, activity clubs and any other youth related organisations or groups

- Class 2144 Somerset Countryside** – Create a collage or painting of the Somerset countryside. To be A2 size.

• Advertisement Sales • Design and Print • Showground Sales



Running an event? Need a programme? Improve profits! Call:



Graham Walton Publishing Ltd
Print and Publishing Solutions

Dean, Cranmore, Shepton Mallet, Somerset BA4 4SA

Tel: 01749 880181 Email: sales@gwpublishing.co.uk Website: www.gwpublishing.co.uk

Working in partnership with the Agricultural Show and Event Industries



follow us on Facebook for regular updates "GW Publishing & Event Support Ltd"