

# DORSET COUNTY SHOW

2 & 3 SEPT 2023



## HORTICULTURE & HOMECRAFT SCHEDULE 2023

HORTICULTURE ENTRIES CLOSE: MON 21 AUG 2023  
HOMECRAFT ENTRIES CLOSE: WED 9 AUG 2023

MAJOR SHOW SPONSOR:

Cornish Mutual  
Farming Insurance Experts



Celebrate **rural life** in Dorset  
at your **County Show**

**Cornish Mutual**  
Farming Insurance Experts



**Edwards & Keeping**

CHARTERED ACCOUNTANTS



**LANGHAM**

WINE ESTATE

  
**Blanchards Bailey**  
Law for Life

**Symonds  
& Sampson**



**KINGSTON  
MAURWARD  
COLLEGE**

 **CG FRY & SON**  
BUILDERS  
DEVELOPMENT & CONTRACTING



**NFU Mutual**  
DORCHESTER

**Laurence Pierce**

  
**(Wool Merchants) Ltd.**  
[www.wool.ie](http://www.wool.ie)

The  
**B** Magazine  
From the pages of the Blackmore Vale



**JOHN WOOD**



**LIVESTOCK**



**Battens**  
CHARITABLE TRUST



**Friars Moor**  
Livestock Health

  
**PURBECK**  
Award Winning Dorset Ice Cream

**DORSET  
COUNTY  
SHOW**  
2 & 3 SEPT 2023

**THANK YOU  
TO OUR SPONSORS**  
04/2023

# DORSET COUNTY SHOW

2 & 3 SEPT 2023

Hosted by Dorchester Agricultural Society

**Show location:** Dorchester Showground, Cokers Frome, Dorchester,  
Dorset, DT2 7SD

**Show Office:** Agriculture House, Acland Road, Dorchester, Dorset, DT1 1EF  
T. 01305 264249

**E.** [info@dorsetcountyshow.co.uk](mailto:info@dorsetcountyshow.co.uk) **W.** [www.dorsetcountyshow.co.uk](http://www.dorsetcountyshow.co.uk)

VAT Number: 185878204 Company Number: 3473496  
Charity Number: 1066401

**President:** Mr Peter Clark

**Show Chair:** Mrs Nicki Ralph  
**Show Vice-Chair:** Mr Jason Bowerman  
**Show Secretary:** Mr James Cox  
**Show Assistant:** Alexandra Cartwright

**Horticulture Chair:** Mr Robin Pitcher  
**Vice-Chair:** Mr Eric Pickard  
**Homecraft Chair:** Mrs Linda Coombes  
**Vice Chair:** Mrs Sarah Cuff

## Index

<b>HORTICULTURE</b> .....	<b>4</b>	Cookery .....	16
Flower .....	5	Junior Cookery .....	18
Vegetable and Fruit .....	7	Decorative Flower Arranging.....	19
Intermediate .....	10	Handicraft .....	20
Novice .....	10	Additional Needs .....	21
Junior .....	11	Homemade Wines and Cider.....	21
<b>Homecraft</b> .....	<b>12</b>	Photography .....	21
Art .....	12	Preserves .....	23
Junior Art and Craft .....	12	Scarecrow Competition .....	23
Decorative Cake Icing .....	16	<b>Rules and Regulations</b> .....	<b>24</b>

## Entries Close

**Horticulture: Monday 21st August 2023**

**Homecraft: Wednesday 9th August 2023**

# HORTICULTURAL SECTION

CLOSING DATE FOR HORTICULTURAL ENTRIES WILL BE MONDAY 21ST AUGUST

Chairman: Mr Robin Pitcher Vice-Chair: Mr Eric Pickard

**2023 PRIZE MONEY (Except where stated)**

**Standard including Junior Classes: First Prize £5, Second Prize £3, Third Prize £2**  
*Prize if different, will be stated with the Class*

**ENTRY FEE – Except where stated**  
**£0.75 inc VAT/entry**

Exhibits may be staged from 2.00pm on Friday 1st September until 7.45am on Saturday 2nd September and may only be removed after 5.30pm on foot (6pm by car) on Sunday 3rd September.

A **DROP OFF** facility will be available beside the Horticulture marquee for those with large exhibits (weather permitting) - THIS AREA IS **NOT FOR PARKING** and will not be available after 6.45am on Saturday 2nd September. Pre Show Car Passes will be issued for dropping off entries and these will allow access to the Showground via Gate 1 on Friday, until 8pm, after that time all Horticulture vehicle passes will be directed to Gate 4.

One complimentary Show ticket will be sent to adult exhibitors who make entries to the value of £14.00 or more in the combined Homecraft, Horticultural & Farm Produce Sections and these will be dispatched with confirmation of entries.

**This Society is an affiliated member of the Royal Horticultural Society, National Dahlia Society, National Vegetable Society and The Daffodil Society.**

**All exhibits must have been grown and owned by the exhibitor for a minimum of three months.**

Variety cards will be available from the Steward for displaying with exhibits.

**JUNIORS ARE WELCOME TO ENTER ALL CLASSES**

## FLOWER AWARDS

**ROYAL HORTICULTURAL SOCIETY'S BANKSIAN MEDAL, (Premier Horticultural Award), will be presented to the winner of the highest amount of prize money in the Flower and the Vegetable & Fruit Section.**

Not eligible are the 2019 & 2022 winners, Mr M Read, Mr C McCormick.

- HT1 **DORCHESTER AGRICULTURAL SOCIETY Perpetual Flower Challenge Cup for the Best Exhibit in the Flower Section**
- HT2 **WHEATLEY Perpetual Challenge Salver for the Runner Up in the Flower Classes**
- HT3 **SHEPPARD Perpetual Memorial Cup for the Best Exhibit in the Chrysanthemum, Dahlia and Rose Classes**
- HT4 **GALTON Perpetual Challenge Trophy for the Best Exhibit in the Vase of Flowers class**
- HT5 **READ Perpetual Trophy for the Best Dahlia Exhibit**
- HT6 **WYKE REGIS HORTICULTURAL SOCIETY Perpetual Challenge Cup for the winner of the Chrysanthemum Championship**
- HT7 **BEATON Perpetual Challenge Cup for the Best Pot Plant**
- HT8 **HUMPHRIES GARDEN CENTRE Perpetual Shield for the Best Collection of Pot Plants**
- HT24 **The PETER READ MEMORIAL PERPETUAL TROPHY, awarded to the best tuberous rooted flowering Begonia**

**NATIONAL DAHLIA SOCIETY Silver Medal for the Best Dahlia Exhibit**

**NATIONAL DAHLIA SOCIETY Bronze Medal for the Best Vase of Dahlias in the Show**

**NATIONAL CHRYSANTHEMUM SOCIETY Silver Medal for the Best Chrysanthemum Exhibit in Show**

**NATIONAL CHRYSANTHEMUM SOCIETY Bronze Medal for the Best Vase of Chrysanthemums in Show**

**NATIONAL CHRYSANTHEMUM SOCIETY awards Certificates of Merit in the Chrysanthemum Classes**

## **FLOWER CLASSES**

Names and varieties should be displayed with exhibits.

A limited number of vases are available for the flower classes and must be requested on the entry form.

**Judges:** Mr D Shergold, Salisbury; Mr G M Davies, Christchurch

**Judging commences at 8.00am prompt on Saturday**

- 301 DAHLIAS**, Championship, 3 vases, 3 blooms per vase or 6 pom poms per vase, 3 classifications  
**Entry Fee:** £1.20  
**Prize Money:** 1st £10; 2nd £7; 3rd £3
- 302 DAHLIAS**, Pom-poms, 6 blooms (56mm maximum diameter), 1 vase
- 303 DAHLIAS**, Small or Miniature Ball, small from 115 mm and not exceeding 170 mm in diameter, miniature not exceeding 115mm diameter, 3 blooms, 1 vase
- 304 DAHLIAS**, Small or Miniature Decorative, 3 blooms, 1 vase
- 305 DAHLIAS**, Medium Decorative, (not exceeding 220 mm diameter) 3 blooms, 1 vase
- 306 DAHLIAS**, Small Cactus or Semi-Cactus, (not exceeding 170 mm diameter) 3 blooms, 1 vase
- 307 DAHLIAS**, Medium Cactus or Semi- Cactus, (up to 220 mm diameter) 3 blooms, 1 vase
- 308 DAHLIAS**, 1 bloom Large or Giant Cactus or Semi-Cactus
- 309 DAHLIAS**, 1 vase, 3 blooms, any classification not otherwise mentioned
- 310 DAHLIAS**, 1 container arranged for effect, number of blooms optional
- 311 DAHLIAS**, 1 Specimen bloom
- 312 CHRYSANTHEMUMS**, Intermediates, Reflex or Incurve, 1 vase, 3 blooms, any variety or varieties
- 313 CHRYSANTHEMUMS SPRAY**, 1 vase, 3 stems, any variety or varieties
- 314 CHRYSANTHEMUMS**, 1 specimen bloom
- 315 ROSES**, large flowered, 1 vase, 3 blooms
- 316 ROSES**, Cluster, 1 vase, 1 stem
- 317 ROSES**, 1 specimen bloom
- 318 ROSES**, Miniature - Multi Flora, 1 vase, 3 stems



**Dahlia Classes Sponsored by**

- 319 **GLADIOLI**, large flowered, 1 vase of 3 stems
- 320 **GLADIOLI**, Primulinius or Butterfly, 1 vase of 3 stems
- 321 **GLADIOLI**, 1 specimen spike
- 322 **1 CONTAINER OF MIXED FLOWERS**, space allowed 77cm
- 323 **FLOWERS**, 2 vases, 5 stems in each vase, 2 distinct kinds
- 324 **AFRICAN MARIGOLDS**, 1 vase, 5 blooms
- 325 **ASTERS**, 1 vase, 5 blooms
- 326 **PANSY AND/OR VIOLA**, 6 blooms, to be displayed in a box (either provided by yourself or the Society)
- 327 **FLOWERS**, 1 vase, 5 stems of 1 kind, other than any kind previously mentioned in the Flower Section
- 328 **HOSTA LEAF**, 1 leaf in water
- 329 **FLOATING FLOWER HEAD / HEADS**, displayed in a shallow container not exceeding 30cm
- 330 **HERBACEOUS PERENNIAL**, 3 stems
- 331 **SHRUB**, 1 stem (excluding roses)
- 332 **TALLEST SUNFLOWER**, 1st prize only to be awarded of £7
- 333 **CACTUS**, single or multi headed, 1 pot or pan
- 334 **SUCCULENT**, 1 pot or pan, not cacti
- 335 **1 FOLIAGE POT PLANT**
- 336 **1 FLOWERING POT PLANT**, not tuberous Begonia, Fuchsia or Pelargonium
- 337 **1 POT PLANT**, flowering tuberous Begonia
- 338 **1 FLOWERING PELARGONIUM**
- 339 **HOUSE PLANTS**, 2 in separate containers, not tuberous Begonias, Fuchsias or Pelargoniums
- 340 **POT PLANT**, flowering Fuchsia
- 341 **BONSAI**, Evergreen or Deciduous, presented in a bonsai china or plastic bowl
- 342 **3 POT OR CONTAINER PLANTS**, space allowed 123cm x 69cm
- 343 **MIXED FLOWERS GROWING IN A CONTAINER**, container not to exceed 73cm
- 344 **1 VASE of FLOWERS from the following:**
- (a) **GLADIOLI**, 3 stems, 1 vase, any variety or varieties
  - (b) **DAHLIAS**, 3 blooms, 1 vase, any variety or varieties
  - (c) **CHRYSANTHEMUMS**, 3 blooms, 1 vase, any variety or varieties
  - (d) **ROSES**, 3 blooms of H.T.'s, 1 vase, any variety or varieties
  - (e) **ANNUALS**, 9 blooms, 1 vase, any variety or varieties, of any one type i.e. Asters

# VEGETABLE AND FRUIT AWARDS

All Vegetables will be judged under N.V.S rules.

**ROYAL HORTICULTURAL SOCIETY'S BANKSIAN MEDAL (Premier Horticultural Award),** will be presented to the winner of the highest amount of prize money in the Flower, Fruit & Vegetable Sections. Not eligible are the 2019 & 2022 winners, Mr M Read, Mr C McCormick

- HT9 DORCHESTER AGRICULTURAL SOCIETY Perpetual Vegetable & Fruit Challenge Cup** awarded for the Best Exhibit in the Vegetable and Fruit classes.
- HT10 AMATEUR Perpetual Challenge Cup** awarded to the Winner of 'Housewife's Choice' Class
- NATIONAL VEGETABLE SOCIETY Medal** for the Best Dish of Vegetables, all vegetables will be judged
- HT16 HAYWARD Perpetual Challenge Trophy** for the best Fruit Exhibit
- HT17 P J BARNES Memorial trophy** to be awarded to the winning Collection of Vegetables
- HT18 MILES Perpetual Challenge Trophy** will be awarded to the winner of the Onion Championship
- HT19 MARY HAYWARD Perpetual Challenge Trophy** for the winner of the Collection of Three Dishes of Vegetables
- HT20 PITCHER Perpetual Challenge Trophy** for the best exhibit in the Grow and Show in a Wheelbarrow class
- HT21 GROVES NURSERY Perpetual Challenge Trophy** for the best exhibit of herbs

## VEGETABLE AND FRUIT CLASSES

**Judges:** Mr Graeme Le Marquand, St Ouen; Mr Gerry Edwards, Swanage; Mr B Newman, Horsham; Mr P Yeoman, Albury;

**Judging commences at 8.00am prompt on Saturday**

Paper plates will be provided for displaying exhibits in all classes marked \*

Information on staging can be obtained from the Show Office or Show Stewards

- 345 COLLECTION OF VEGETABLES**, 5 different kinds from those listed in the classes within this section. Points will be awarded for presentation  
**Entry Fee** £1.20  
**Prize Money** 1st £50, 2nd £20, 3rd £13, 4th £8
- 346 TOP TRAY CLASS**, a collection of 3 types of vegetables taken from the following list: The quantity of each vegetable required for the collection is given in brackets and each type must consist of the same variety: Carrots (3), Cauliflower (2), Onions (3), Parsnips (3), Peas (6 pods), Potatoes (3), Runner Beans (6 pods), Tomatoes (6), French Beans (6 pods), Sweetcorn (2), pepper (3), Cucumber (2), Courgettes (3), Red Beet (3), Aubergines (2). All vegetables are to be displayed for effect. The vegetables should be displayed within an area measuring 45cm x 60cm, without bending any part of them. No part of any exhibit may exceed the size of the tray. A tray or board measuring 45cm x 60cm can be used to display the vegetables, or the area can simply be marked on the staging. Where a tray has a lip or edge, the internal measurements must not exceed 45cm x 60cm.  
**Entry Fee** £1.20  
**Prize Money** 1st £7, 2nd £6, 3rd £4

- 347 HOUSEWIFE'S CHOICE**, a basket or trug of 4 different kinds of vegetable or 3 vegetables and a fruit, for a family of four and judged for culinary quality  
**Entry Fee** £1.20  
**Prize Money** 1st £7, 2nd £6, 3rd £4
- 348 MIXED COLLECTION**, 1 vase of flowers, 1 pot plant, 2 kinds of vegetables, to fit within a 123 cm frontage  
**Entry Fee** £1.20  
**Prize Money** 1st £7, 2nd £6, 3rd £4
- 349 COLLECTION OF VEGETABLES**, 5 different kinds, 1 specimen of each to be staged. Maximum of 92cm frontage  
**Entry Fee** £1.20  
**Prize Money** 1st £7, 2nd £6, 3rd £4
- 350 COLLECTION OF VEGETABLES**, 3 different kinds, 2 specimens of each to be staged. Maximum frontage 92cm frontage  
**Entry Fee** £1.20  
**Prize Money** 1st £7, 2nd £6, 3rd £4
- 351 GROW AND SHOW IN A WHEELBARROW**, A collection of Fruit, Flowers & Vegetables to be shown in a wheelbarrow, any size wheelbarrow, must contain all three.  
**Kindly sponsored by Robin Pitcher Horticultural Services**  
**Entry Fee** £1.20  
**Prize Money** 1st £10, 2nd £6, 3rd £4.
- 352 ONION CHAMPIONSHIP**, 3 large onions, 3 onions up to 250g, 6 large shallots  
**Entry Fee** £1.20  
**Prize Money** 1st £10, 2nd £6, 3rd £4
- 353 COLLECTION OF VEGETABLES**, 3 dishes, 3 specimens of each, NVS pointing value 18 or less  
**Entry Fee** £1.20  
**Prize Money** 1st £7, 2nd £6, 3rd £4
- 354 1 DISH, 5 COLOURED POTATOES**, optimum individual weight of 200g 1 variety per dish\*
- 355 1 DISH, 5 WHITE POTATOES**, optimum individual weight of 200g, 1 variety per dish\*
- 356 2 DISHES OF POTATOES OF 2 DIFFERENT VARIETIES**, 5 of each variety, optimum individual weight of 200g, 1 variety per dish\*  
**Entry Fee** £1.20  
**Prize Money** 1st £7, 2nd £6, 3rd £4
- 357 6 HOT CHILLI PEPPERS**, 6 of the same cultivar to be displayed on a paper plate\*
- 358 3 SWEET PEPPERS**, 3 of the same cultivar to be displayed on a paper plate\*
- 359 3 CARROTS**, long pointed, tops trimmed to approximately 76mm
- 360 3 CARROTS**, stump rooted, tops trimmed to approximately 76mm
- 361 3 ROUND BEETROOT**, top trimmed to approximately 76mm
- 362 2 LEEKS**, tops tied, not trimmed
- 363 BEAN COLLECTION**, 6 Runners, 6 French
- 364 10 RUNNER BEANS**
- 365 10 FRENCH BEANS**
- 366 3 ONIONS**, red



- 367 **5 ONIONS**, up to 250g
- 368 **3 ONIONS**, over 250g
- 369 **10 SHALLOTS**, other than pickling
- 370 **10 SHALLOTS**, pickling (to pass through a 30mm ring)
- 371 **2 CUCUMBERS**
- 372 **PAIR OF TABLE MARROWS**, not more than 400mm in length
- 373 **PAIR OF MARROWS** (any size)
- 374 **2 LETTUCE** (to be exhibited in water), 1 variety per dish
- 375 **DISH OF 5 TOMATOES**, approximately 60mm in diameter\*
- 376 **DISH OF 10 SMALL FRUITED TOMATOES**, not plum, approximately 30mm in diameter\*
- 377 **DISH OF 10 SMALL PLUM TOMATOES** approximately 30mm in diameter\*
- 378 **DISH OF SWEETCORN**, 3 Cobs. Cobs to be open for Judges inspection
- 379 **2 CAULIFLOWERS**, to be shown with approximately 76mm of stem
- 380 **DISH OF ANY OTHER KIND OF VEGETABLE**, not already listed in the Schedule (vegetable to be named)
- 381 **THE LONGEST RUNNER BEAN** (of reasonable quality) - 1st prize only awarded £5
- 382 **THE HEAVIEST ONION**, trimmed to within 5 cm of top, no roots, and surplus outer skins removed. 1st prize only awarded £5
- 383 **THE HEAVIEST MARROW** before staging, exhibitor must report to the Steward to weigh and record weight, scales are provided. 1st prize only awarded £5
- 384 **THE HEAVIEST PUMPKIN** before staging, exhibitor must report to the Steward to weigh and record weight, scales are provided. 1st prize only awarded £7

The Heaviest Pumpkin sponsored by



- 385 **PARSLEY**, 9 stems in water
- 386 **3 KINDS OF CULINARY HERBS**, 3 stems of each in water, 3 containers, to be named
- 387 **LAVENDER**, 9 stems in water
- 388 **5 APPLES**, dessert, 1 variety per dish \*
- 389 **5 APPLES**, culinary, 1 variety per dish \*
- 390 **DISH OF 5 PEARS**, 1 variety per dish \*
- 391 **RHUBARB**, 3 sticks, 1 variety per dish
- 392 **DISH OF SOFT FRUIT**, 12 berries or 6 strigs, 1 variety per dish\*
- 393 **2 KINDS OF FRUIT**, in separate containers, 1 variety per dish\*
- 394 **ANY OTHER FRUIT**, not already listed, 1 dish\*, e.g. plums, medlars or figs (5), blueberries (12)

## INTERMEDIATE CLASSES

These classes are open to anyone who has not won 3 first prizes in an Open Horticultural class or 5 first prizes in any intermediate classes at any previous Dorset County Show.

Juniors are welcome to enter the Intermediate Classes.

**Judge:** Mr D Pride, Dorchester

- HT25     SIMON MILLS Perpetual Challenge Trophy to be awarded for the best exhibit in the Intermediate classes**
- 395     1 VASE OF FLOWERS** from the following:
- (a) GLADIOLI**, 3 stems, 1 vase, any variety or varieties
  - (b) DAHLIAS**, 3 blooms, 1 vase, any variety or varieties
  - (c) CHRYSANTHEMUMS**, 3 blooms, 1 vase, any variety or varieties
  - (d) ROSES**, 3 blooms of H.T.'s, 1 vase, any variety or varieties
  - (e) ANNUALS**, 6 blooms, 1 vase, any variety or varieties, of any one type i.e. Asters
- 396     MIXED COLLECTION**, 1 vase of flowers, 2 kinds of vegetables, to fit within a 75cm frontage
- 397     BASKET OF MIXED VEGETABLES**
- 398     3 BEETROOT or 3 CARROTS**, tops trimmed to approximately 76mm
- 399     2 COURGETTES**, approximately 150mm, shown with flower
- 400     3 RUNNER BEANS**
- 401     3 ONIONS**, any size
- 402     5 SHALLOTS**
- 403     DISH OF 3 MEDIUM OR 6 CHERRY TYPE TOMATOES**

## NOVICE CLASSES

A Novice is defined as someone who has not previously won a 1st prize in an Open Horticultural class or 3 first prizes in the Novice/Intermediate Horticultural classes at any previous Dorset County Show.

Juniors are welcome to enter the Novice Classes.

**Judge:** Mr D Pride, Dorchester

Information on staging exhibits can be obtained from the Show Office or Show Stewards

- HT11     LESTER Novice Perpetual Challenge Cup for the Best Exhibit in this Section**
- 404     1 VASE OF FLOWERS**, 3 stems, 1 kind
- 405     1 POT PLANT**
- 406     DISH OF FRUIT\***
- 407     DISH OF VEGETABLES**, 3 of 1 kind

# JUNIOR CLASSES

## JUNIORS ARE ALSO ELIGIBLE TO ENTER THE NOVICE, INTERMEDIATE & OPEN HORTICULTURAL CLASSES

All competitors in this section must state their First Name and Date of Birth on the entry form

**Judges:** Mr David Ennals, Dorchester; Mrs Jane Ennals, Dorchester

- HT12 DORCHESTER AGRICULTURAL SOCIETY Perpetual Challenge Cup for the Best Exhibit from a child in the 7 years and under section**
- HT13 ROLLS Perpetual Challenge Cup for the Best Exhibit from a child in the 8 years to under 12 years section**
- HT14 AUDREY BEATON Perpetual Challenge Cup for the Best Exhibit from a child in the 12 years to 16 years section**

### Age 7 years and under on 31/08/23

- 408 AN ANIMAL**, made from vegetable and plant material
- 409 AN NECKLACE MADE FROM GARDEN MATERIALS**, threaded on cotton and made with natural material only. Space allowed 26cm x 46cm
- 410 'A FLOWER I HAVE GROWN'**, to be exhibited along with pictures of me growing it
- 411 PAINT A FLOWER POT**, maximum diameter or width 20cm
- 412 BEST CROP OF CRESS**, grown on paper in a saucer
- 413 A PICTURE MADE FROM SEEDS**, to be stuck to an A4 sheet of paper with suitable glue
- 414 THE TALLEST SUNFLOWER**, first prize only

### 8 years to under 12 years of age on 31/08/23

- 415 AN INSECT**, made from vegetable and plant material
- 416 A MINIATURE GARDEN**, in a container no larger than 31cm x 46cm
- 417 A DECORATED EGG**, made from a hard boiled or blown egg
- 418 'A VEGETABLE I HAVE GROWN'**, to be exhibited with hand written growing instructions
- 419 A GRASS SEED HEAD**, made using a pair of tights/stockings
- 420 A PICTURE MADE FROM SEEDS**, to be stuck to an A4 sheet of paper with suitable glue
- 421 THE TALLEST SUNFLOWER**, first prize only

### 12 years to 16 years of age on 31/08/23

- 422 A VEHICLE**, made from vegetable and plant material
- 423 AN ARRANGEMENT OF FOLIAGE AND/OR FLOWERS**, in a recycled container
- 424 2 COURGETTES**, approximately 150mm, shown with flower
- 425 ROOT VEGETABLES**, 3 of 1 kind, e.g. beetroot, carrots or potatoes
- 426 A POT PLANT**, e.g. fuchsia, cactus
- 427 THE TALLEST SUNFLOWER**, first prize only

# HOMECRAFT SECTION

CLOSING DATE FOR ALL HOMECRAFT ENTRIES WILL BE WEDNESDAY 9<sup>TH</sup> AUGUST 2023

Chair: Mrs Linda Coombes Vice-Chair: Mrs Sarah Cuff

## ART AND CRAFT – JUNIOR

### THIS YEAR'S THEME ~ OUR GREAT COUNTY OF DORSET

2023 PRIZE MONEY

(Except where stated)

All Classes: First Prize £5, Second Prize £3, Third Prize £2

Entry Fee

£1.00 inc VAT/entry

Except where stated

Exhibits may be staged between **2.00pm and 7.30pm** on Friday 1<sup>st</sup> September and between **6.30am and 7.30am** on Saturday 2<sup>nd</sup> September (except photographs) and only removed **BETWEEN 5.30pm and 6.30pm** on Sunday 3<sup>rd</sup> September - **no collection by car until after 6pm.**

Any non-perishable exhibits not collected by 6.30pm on Sunday will be taken to the Show Office and must be collected by 29<sup>th</sup> September.

A **DROP OFF** facility will be available beside the Homecraft marquee for those with large exhibits (weather permitting) - THIS AREA IS **NOT FOR PARKING** and will not be available after 7.30am on Saturday. Car passes will be issued for dropping off entries and these will allow access to the Showground via Gate 1 on Friday 1<sup>st</sup> September, thereafter all Homecraft vehicle passes will be directed to Gate 4.

The presentation of awards will take place in the Homecraft Marquee on Sunday 3<sup>rd</sup> September 2023 at 4:30pm.

One complimentary Show ticket will be sent to adult exhibitors who make entries to the value of £14.00 or more in the combined Homecraft & Horticultural Section (or two entries in the Decorative Flower Arranging classes) and these will be dispatched with confirmation of entries.

---

## ART

ALL PAINTINGS MUST COME WITH A MEANS OF HANGING

Chief Steward: Mrs Caroline Hiscock

Exhibits **MUST NOT** have been entered in a previous Dorset County Show

Judge: Mrs C Taylor, Weymouth

- |       |   |
|-------|---|
| HC 24 | The JEAN BULL Perpetual Challenge Trophy for the Best Exhibit in the Senior Art section |
| 428   | A PASTEL PICTURE  |
| 429   | A WATERCOLOUR PAINTING  |
| 430   | AN OIL OR ACRYLIC PAINTING  |
| 431   | A SCULPTURE FROM ANY MEDIUM   |
| 432   | A PICTURE IN ANY OTHER MEDIUM   |

# THEME: OUR GREAT COUNTY OF DORSET, LAND & SEA

All entries must clearly state the child's age on the front of the entry

All entries must be the child's own work

Judge: Mrs H Baker, Blandford

- HC16 The CHAPMAN Perpetual Challenge Cup for the most points in the Junior Art and Craft Section
- HC17 The REDINGTON Perpetual Challenge Cup for the Best Exhibit in the Junior Craft Classes

## UNDER 5'S PLAY/NURSERY GROUP CLASSES

- 433 GROUP PAINTING OR COLLAGE CLASS - OUR GREAT COUNTY OF DORSET, LAND & SEA, using any painting or collage techniques

## ART CLASSES FOR INDIVIDUALS AGED 7 YEARS AND UNDER ON 31ST AUGUST 2023. AGES TO BE WRITTEN ON THE FRONT OF EACH EXHIBIT

- 434 A PAINTING - "THE FARM YARD", no collage techniques or felt pens to be used
- 435 A DETAILED PENCIL DRAWING - "FOSSILS", a freehand drawing, pastel, wax or coloured crayons may be used but no tracing allowed

## CRAFT CLASSES – 7 YEARS AND UNDER ON 31<sup>ST</sup> AUGUST 2023 AGES TO BE WRITTEN ON THE FRONT OF EACH EXHIBIT

- 436 A 3D MODEL - "A SEA MONSTER", a mixed media 3D model using natural materials where possible together with reusable and recyclable junk.
- 437 A DECORATED PAPER PLATE - "A CREATURE OF LAND OR SEA", any materials may be used but must be able to be hung for display
- 438 A 3D MODEL – "A TRACTOR", a mixed media 3D model design of your choice
- 439 SHOEBOX CRAFT – "UNDERWATER", a scene to be contained as far as possible within a shoebox or box of similar size, any materials can be used.
- 440 COLLAGE – "THE BEACH", a design on stiff card using natural materials representing the beach.
- 441 AN A4 PAPER DRAWING AND DESIGN – "MY DREAM GARDEN", using your imagination plan, label and draw a design of your dream garden.
- 442 HANDWRITING, size A4 maximum, on unlined paper only. Class will be judged on both handwriting and illustration.

### **"I love the Earth"**

I love the Earth  
And everything that lives.  
I love the plants  
And the beauty each one gives.  
I love the animals  
And the fishes at sea.  
For I am a part of Mother Earth  
And it's a part of me.

*By Sharon Mattioli*

**OPEN CLASSES - 7 YEARS AND UNDER ON 31<sup>ST</sup> AUGUST 2023.**

**AGES TO BE WRITTEN ON THE FRONT OF EACH EXHIBIT**

- 443 **A PAINTING**, your choice but no collage techniques or felt pens to be used
- 444 **OPEN CRAFT**, a piece of craft of your choice using any medium such as metal, wood, clay, sculpture, candles, glassware etc
- 445 **SALT DOUGH**, any design using your own recipe
- 446 **A PAINTED PEBBLE**, any subject

**CLASSES FOR INDIVIDUALS AGED 8 YEARS TO UNDER 12 YEARS ON 31<sup>ST</sup> AUGUST 2023**

**ART CLASSES – 8 YEARS TO UNDER 12 YEARS OLD ON 31<sup>ST</sup> AUGUST 2023.**

**AGE TO WRITEN ON THE FRONT OF EACH EXHIBIT**

- 447 **A PAINTING - "THE FARMYARD"**, no collage techniques or felt pens to be used
- 448 **A DETAILED PENCIL DRAWING - "A FOSSIL"**, a freehand drawing, pastel wax or coloured crayons may be used but no tracing allowed

**CRAFT CLASSES– 8 YEARS TO UNDER 12 YEARS OF AGE ON 31<sup>ST</sup> AUGUST 2023**

**AGES TO BE WRITEN ON THE FRONT OF EACH EXHIBIT**

- 449 **A 3D MODEL – "A SEA MONSTER"**, a mixed media 3D model using natural materials where possible together with reusable and recyclable junk
- 450 **A DECORATED PAPER PLATE - "A CREATURE OF LAND OR SEA"**, any materials can be used but must be able to be hung for display
- 451 **A 3D MODEL – "A TRACTOR"**, a mixed media 3D model design of your choice.
- 452 **SHOEBOX CRAFT - "UNDERWATER"**, a scene to be contained as far as possible within a shoebox or box of similar size, any materials can be used.
- 453 **COLLAGE - "THE BEACH"**, a design on stiff card using natural materials from the beach.
- 454 **AN A4 PAPER DRAWING AND DESIGN – "MY DREAM GARDEN"**, using your imagination plan, label and draw a design of your dream garden.
- 455 **HANDWRITING**, size A4 maximum, on unlined paper only. Class will be judged on both handwriting and illustration

**The Sea**

The sea can be angry.  
The sea can be rough.  
The sea can be wild.  
The sea can be tough.  
The sea can rip.  
The sea can tear.  
The sea can roar like a hungry bear.  
The sea can be gentle.  
The sea can be flat.  
The sea can be as calm as a sleeping cat.  
The sea can glide over the sand.  
Stroking the beach like a giant hand.

**OPEN CLASSES – 8 YEARS TO UNDER 12 YEARS OF AGE ON 31<sup>ST</sup> AUGUST 2023.**

**AGES TO BE WRITTEN ON THE FRONT OF EACH EXHIBIT**

- 456 **A PAINTING**, your choice but no collage techniques or felt pens to be used
- 457 **OPEN CRAFT**, a piece of craft of your choice using any medium such as metal, wood, clay, sculpture, candles, glassware etc
- 458 **SALT DOUGH**, any wild animal design using your own recipe
- 459 **A PAINTED PEBBLE**, any subject

**ART CLASSES – 12 YEARS TO 16 YEARS OLD ON 31ST AUGUST 2023.**

**AGE TO WRITTEN ON THE FRONT OF EACH EXHIBIT**

**460 A PAINTING - "A SCENE FROM OUR COUNTY DORSET",** no collage techniques or felt pens to be used

**461 A DETAILED PENCIL DRAWING - "A DETAILED DRAWING OF A FOSSIL",** a freehand drawing, pastel wax or coloured crayons may be used but no tracing allowed

**CRAFT CLASSES – 12 YEARS TO 16 YEARS OLD ON 31ST AUGUST 2023.**

**AGE TO WRITTEN ON THE FRONT OF EACH EXHIBIT**

**462 A 3D MODEL - "A SEA MONSTER",** a mixed media 3D model using natural materials where possible together with reusable and recyclable junk

**463 A DECORATED PAPER PLATE - "A CREATURE OF LAND OR SEA",** any materials may be used but must be able to be hung for display

**464 A 3D MODEL – "A TRACTOR",** a mixed media 3D model design of your choice.

**465 SHOEBOX CRAFT – "UNDERWATER",** a scene to be contained as far as possible within a shoebox or box of similar size, any materials may be used.

**466 COLLAGE - "THE BEACH",** a design on stiff card using natural materials representing the beach.

**467 AN A4 PAPER DRAWING AND DESIGN – "MY DREAM GARDEN",** using your imagination plan, label and draw a design of your dream garden

**468 HANDWRITING,** size A4 maximum, on unlined paper only. Class will be judged on both handwriting and illustration

**The Sea**

Here on the beach we can paddle and play  
Sunblock on noses and sand between toes,  
Castles, stand proud till the end of the day  
Seashore swept clean as the tide comes and goes.  
Out on the sea rides the small fishing fleet,  
Keeping a weather eye open for squalls,  
Risking their lives to ensure we can eat  
While we live safe behind brick walls.  
Down in the deeps stir the strongest of beasts,  
Colours and shapes that have never been seen  
Gathered round fissures for volcano feasts,  
Darkness and heat where no human has been.  
Playful and scary and utterly weird,  
Part of our earth we don't know much about.  
There to be loved and respected and feared,  
Lots to enjoy-and still lots to find out...

*by Reverend Robert Beard*

**OPEN CLASSES – 12 YEARS TO 16 YEARS OLD ON 31<sup>ST</sup> AUGUST 2023.**

**AGES TO BE WRITTEN ON THE FRONT OF EACH EXHIBIT**

**469 A PAINTING,** your choice but no collage techniques or felt pens to be used

**470 OPEN CRAFT,** could include any medium - metal, wood, clay, sculpture, candles, glassware etc

**471 SALT DOUGH,** any wild animal design using your own recipe

**472 A PAINTED PEBBLE,** any subject

# CAKE ICING - DECORATIVE CONFECTIONERY

These classes are judged on decoration only. They are not cut, so dummies may be used.

Classes to be judged on:

1. Interpretation
2. Originality of Design and Balance
3. Skill and Decoration
4. Colour and Texture

**Judge: Mrs S Warr, Sherborne**

- HC7**      The COLEMAN Perpetual Challenge Cup for the Best Sugar Paste exhibit
- HC8**      The COLEMAN Perpetual Challenge Cup for the Best Royal Iced exhibit
- HC19**     The WESSEX SUGAR ICING GUILD Perpetual Challenge Trophy for the winning Floral Arrangement or Spray
- 473**      A NOVELTY SPONGE CAKE, for a celebration of your choice, to be judged on decoration only. All decorations to be edible. Own recipe, space allowed 38cm
- 474**      A CELEBRATION CAKE, for a celebration of your choice, to be covered in sugar paste with removable decoration in gum/flower paste or air drying media. A limited amount of royal icing may be used. Space allowed 38cm.

## COOKERY

All entries in this section **MUST** be **COOKED** by the entrant and exhibited on a white paper plate and in a clear plastic bag, unless otherwise stated

**Chief Steward: Mrs Sarah Cuff**

**Judges: Mrs M Pasche, Bridport; Mrs S Warr, Blandford & Mrs J Horsington, Dorchester**

- HC6**      The DORCHESTER AGRICULTURAL SOCIETY Perpetual Challenge Cup for the Exhibitor gaining the Highest Number of Points in the Cookery Section
- HC23**     The JO YEATMAN Perpetual Challenge Trophy for the Best Victoria Sandwich
- 475**      A TEA LOAF, own recipe but must include tea, any size
- 476**      VICTORIA SANDWICH, made with three eggs, jam filled and dusted with caster sugar.
- 477**      **DUNDEE CAKE**
- |                                    |  |
|------------------------------------|--|
| <i>170g butter</i>                 | <i>170g currants</i>                         |
| <i>170g caster sugar</i>           | <i>170g sultanas</i>                         |
| <i>Grated rind of orange</i>       | <i>170g raisins</i>                          |
| <i>4 standard eggs</i>             | <i>55g glace cherries, washed and halved</i> |
| <i>200g plain flour</i>            | <i>85g mixed chopped peel</i>                |
| <i>Half teaspoon baking powder</i> | <i>1 teaspoon mixed spice</i>                |

**Decoration:** 55 g whole blanched almonds

**Method:** Mix by the creaming method, arrange the whole almonds in circles around the top. Prepare an approximately 18 cm cake tin. Bake in the middle of a slow oven at 150°C (300°F) Gas Mark 2 for 3 - 3 hours 15mins



- 478 CHERRY CAKE**  
*115g butter* *200g self-raising flour*  
*115g caster sugar* *Pinch of salt*  
*3 eggs* *30g ground almonds*  
*170g glace cherries*
- Method:** Grease and line an approximately 15 cm round cake tin. Quarter the cherries and toss in a little of the weighed flour. Sieve remainder of the flour with the salt and add the ground almonds. Cream the butter and sugar, whisk the eggs and beat in a little at a time. Fold in the flour and the cherries. Place the mixture into a tin and smooth level. Bake for approximately 1 hour, 15 mins at 180°C (350°F) Gas Mark 4
- 479 VANILLA SWISS ROLL**, made with two eggs, jam filled and dusted with caster sugar.
- 480 FIVE CHEESE SCONES**, own recipe
- 481 ONE LOAF**, made with yeast, please state what type of flour used
- 482 ONE LOAF MADE IN A BREAD MAKER**, made with yeast, please state what type of flour used.
- 483 SAVOURY FLAN**, approximately 20cm and free standing
- 484 A PIZZA**, approximately 20cm, own recipe
- 485 A SOURDOUGH LOAF**, please state what type of flour used.
- 486 A ROUND OF SHORTBREAD**, own recipe
- 487 HOMEMADE FUDGE**, six pieces to be supplied, any flavour.
- 488 A CAKE**, own recipe - including a vegetable from the 'veg patch' (any out of carrot, courgette, beetroot, parsnip etc. but please state which) Approx. 6in/15cms round. No filling. Can include a cream cheese topping. To be displayed on a board.
- 489 A DORSET APPLE CAKE**  
*225g soft margarine* *3 eggs*  
*225g caster sugar* *75g sultanas*  
*350g self-raising flour* *1 tsp mixed spice*  
*2 medium cooking apples, peeled and sliced*  
*A small amount of demerara sugar for topping.*
- Method:** Grease and line an 20cm round tin. Cream together the sugar and margarine. Gradually add the eggs one at a time. Fold in the flour and mixed spice. Carefully mix in the apples and sultanas. Scrape the mixture into the loaf tin and sprinkle with a little demerara sugar. Bake at 175C (350F or Gas Mark 4) for 45/60 mins until golden brown. Allow to cool in the tin for 15 mins before turning out onto a wire rack to cool completely.
- 490 GINGER BREAD**  
*230g plain flour* *115g butter*  
*3tsp ground ginger* *115g soft brown sugar*  
*1tsp bicarbonate of soda* *7tbsp golden syrup*  
*140ml milk* *1 egg*
- Method:** Sift these ingredients together in a mixing bowl. Put butter, sugar and syrup into a saucepan, melt over a low heat, stirring continuously. Pour onto dry ingredients. Beat well, add beaten egg, beat together until smooth. Pour into an approximately 18 cm greased and lined square tin. Bake in the middle of a slow oven at 150°C (300°F) Gas Mark 2 for two hours. Leave to cool, turn out onto wire rack.

- 491 **A GLUTEN FREE CAKE**, own recipe to be judged on taste and appearance. The sides are to be left uncovered and everything must be edible. Maximum size 25cm diameter. To be displayed on a plate/board/base of your choice - covering optional.
- 492 **FIVE MUFFINS**, own recipe
- 493 **A BEACH PICNIC FOR TWO**. Four items; 2 sweet and 2 savoury to be displayed in a basket/hamper of your choice. Props may be included. To be judged on individual items, balance, presentation and overall effect.

## **COOKERY - JUNIOR**

All entries in this section **MUST** be exhibited on a white paper plate and in a clear plastic bag, unless otherwise stated

All entries in this section **MUST** clearly state the exhibitors age on the entry

**Judges: Mrs M Pasche, Bridport; Mrs S Warr, Blandford & Mrs J Horsington, Dorchester**

- HC9 The **CHEFFEY** Perpetual Challenge Cup for the highest number of points in the 7 years and under cookery section
- HC10 The **ROSE** Perpetual Challenge Shield for the highest number of points in the 8 years to under 12 years cookery section
- HC11 The **UNGARETTI** Perpetual Challenge Cup for the highest number of points in the 12 years to 16 years cookery section

### **Age 7 years and under on 31st August 2023**

- 494 **'DORSET PRODUCE, FRUIT OR VEGETABLE'**, a model of your choice, but must be completely edible and made from marzipan and/or sugar paste, no wire, skewers or sticks to be used. Space allowed 20cm. May be displayed on a board
- 495 **GINGERBREAD PEOPLE**, own recipe, please display 2 pieces
- 496 **FIVE DECORATED CAKES**, own recipe, display in cake cases
- 497 **CHEESE STRAWS**, own recipe

### **Age 8 years to under 12 years on 31st August 2023**

- 498 **'DORSET PRODUCE, FRUIT OR VEGETABLE'**, model of your choice, but must be completely edible and made from marzipan and/or sugar paste, no wire, skewers or sticks to be used. Space allowed 20cm. May be displayed on a board
- 499 **5 CHEESE SCONES**, own recipe
- 500 **FIVE DECORATED CAKES**, own recipe, display in cake cases
- 501 **FIVE JAM TARTS**, own recipe

### **Age 12 years to 16 years of age on 31st August 2023**

- 502 **'DORSET PRODUCE, FRUIT OR VEGETABLE'**, a model of your choice but must be completely edible and made from marzipan and/or sugar paste, no wire, skewers or sticks to be used. Space allowed 20cm. May be displayed on a board
- 503 **VICTORIA SANDWICH**, made with 3 eggs, jam filled and dusted with caster sugar
- 504 **FIVE BISCUITS**, own recipe
- 505 **A SAVOURY FLAN**, approx. 15cm and free standing

# DECORATIVE FLOWER ARRANGING

Judged according to NAFAS Schedule Definitions ~ Current Edition

Exhibits will be staged on tables and judged from the front only.

**Chief Steward: Mrs Marigold King**

**Judges: Mrs D Pharoah, Broadstone & Mrs S Bendall, Wool**

**Prize Money: 1st £15; 2nd £10; 3rd £5**

**HC1 The BUGG Perpetual Challenge Cup for the best exhibit in the Open Flower Arranging classes**

**HC2 The HERRIDGE Perpetual Challenge Cup is awarded to the exhibitor with the highest number of points in the Decorative Flower Arranging section**

## OPEN CLASSES

**506 I LOVE MY GARDEN**, a petite exhibit of natural plant material, not exceeding 25cm in width, depth and height, accessories allowed.

**507 BLOOMING FANTASTIC**, an exhibit of natural plant material. Space allowed 76cm width, 69cm depth, height unlimited, accessories allowed

**508 MEADOW FRESH**, an exhibit of natural plant material, excluding flowers. Space allowed 76cm width, 69cm depth, height unlimited. Accessories allowed.

**509 COAST AND COUNTRY**, a **horizontal exhibit** of natural plant material. Space allowed 90cm width, 69cm depth, height unlimited.

**510 DORSET COUNTY SHOW**, a pedestal exhibit to be judged from the front but viewed all round. Maximum width and depth allowed 122cm, height unlimited, accessories allowed.

**511 BEAUTIFUL SUNSET**, an exhibit of natural plant material, **using 5 flowers**. Space allowed 76cm width, 69cm depth and height unlimited.

**512 GREEN AND PLEASANT LAND**, an imposed class with all materials provided. Space allowed 76cm width x 69cm deep x unlimited height. To take place on Friday 1st September at 3pm in the Homecraft Marquee. **Entry fee £5.00**

## NOVICE CLASS

**HC3 The TINDALL Perpetual Challenge Cup, to be awarded to the Novice Flower Arranging exhibit**

**513 AUTUMN GLORY**, an exhibit of natural plant material. Space allowed 76cm width, 69cm depth and height unlimited, accessories allowed.

## DECORATIVE FLOWER ARRANGING - JUNIOR

All entries in this section **MUST** clearly state the exhibitors age on the entry form

**Judge: Mrs D Pharoah, Broadstone & Mrs S Bendall, Wool**

**HC4 The POPE Perpetual Challenge Cup for the Best Overall Junior Flower Arranging Exhibit**  
**Age 7 years of age and under on 31st August 2023**

**514 HOLIDAYS**, space allowed 46cm width, 69cm depth, unlimited height -accessories allowed

**8 to under 12 years of age on 31st August 2023**

**515 HOLIDAYS**, space allowed 46cm width, 69cm depth, height unlimited - accessories allowed

**12 to 16 years of age on 31st August 2023**

**516 HOLIDAYS**, space allowed 46cm width, 69cm depth, height unlimited - accessories allowed.

# HANDICRAFTS

Chief Steward: Mrs Sue Jackson

Exhibitors are advised to bring appropriate stands on which to stage their exhibits, as exhibits staged on the correct stands show to much better advantage. Exhibits **MUST NOT** have been entered in a previous Dorset County Show and must be in 'as new' condition

**THREE ENTRIES MAXIMUM PER CLASS PER ENTRANT.**

**NO ARTICLE TO BE ENTERED IN MORE THAN ONE CLASS**

**Judges: Mrs M Vergo, Weymouth & Mrs J Murray, Dorchester**

- HC14 The WESTON Perpetual Challenge Cup for the highest number of points in the Handicrafts Section**
- HC15 The DORCHESTER AGRICULTURAL SOCIETY Perpetual Challenge Cup for the Best Overall Exhibit in the Handicraft Section**
- HC21 THE DORSET GUILD OF WEAVERS, SPINNERS AND DYERS CHALLENGE CUP for the best overall exhibit in the Hand Woven Item classes**
- 517 AN ARTICLE OF CROCHET**
- 518 A HAND KNITTED ARTICLE**, in double knitting or heavier
- 519 A HAND KNITTED ARTICLE**, in 4 ply or finer
- 520 A HAND KNITTED TOY**
- 521 A HAND KNITTED OR CROCHET ARTICLE**, made by a person under 16 years of age. Please state age.
- 522 AN ARTICLE OF DIGITAL EMBROIDERY**, state name of machine used and whether it is an original design or a purchased pattern
- 523 AN ARTICLE OF PATCHWORK**
- 524 A MACHINE OR HAND SEWN ITEM**, made by a person under 16 years of age. Please state age.
- 525 A HAT**, any design or material
- 526 A SOFT TOY**, suitable for a baby under six months, to be washable, all materials used must be soft, no plastic or glass eyes
- 527 AN ITEM MADE FROM RECYCLED CLOTHING**
- 528 A MACHINE OR HAND SEWN ARTICLE**
- 529 HANDMADE BUNTING, FABRIC (TRADITIONAL TRIANGULAR STYLE)**, maximum length 2 metres
- 530 HANDMADE BUNTING, ANY OTHER MATERIAL/STYLE**, maximum length 2 metres, plus a short description of the work produced and the skills involved
- 531 A HANDMADE GREETINGS CARD**
- 532 AN ARTICLE OR ITEM OF FELT WORK**, using the wet or needle felting method
- 533 A HAND WOVEN ITEM**, plus a short description of the inspiration including type of yarn, weave structure, sett of fabric, information on any dyes used and stating if design is original, copy, adapted or kit
- 534 A HAND BAG**, any style or material, to be displayed in a space 75cm x 60cm
- 535 ANY ITEM MADE BY A SENIOR CITIZEN**; please state size
- 536 ANY ITEM** made by you, for which there is no specific category; please state size, plus a short description of the work produced and the skills involved
- 537 A FRAMED CROSS STITCH PICTURE**, beadwork allowed. Please provide own stand for display and state whether it is a kit or an original design
- 538 A FRAMED TAPESTRY PICTURE**, please provide own stand for display and state whether it is a kit or an original design
- 539 A FRAMED PICTURE - ANY OTHER EMBROIDERY**, please provide own stand for display and state whether it is a kit or an original design.
- 540 AN ITEM OF JEWELLERY**
- 541 AN ARTICLE OR ITEM USING BEAD WEAVING**

## ADDITIONAL NEEDS

Judges: Mrs M Vergo, Weymouth & Mrs J Murray, Dorchester

- HC20 THE RIDGEWAY CUP for the best exhibit in the special needs classes  
542 ANY ITEM, MADE BY AN INDIVIDUAL with additional needs

## HOMEMADE WINES & CIDER

Chief Steward: Mrs Linda Coombes

Wines must have been made without the use of commercial extracts. Must be exhibited in **clear 750ml bottles** or 340ml-375ml for half bottle classes with white plastic topped flanged corks. 5 cm x 2.5 cm label stating basic ingredients 7.5 cm from base. Plain white labels only.

Cider to be presented in plain/clear 75cl bottles. Bottles must be full to be acceptable for judging and closed with a screw top or easily removable cork.

### 4 ENTRIES MAXIMUM PER CLASS PER ENTRANT

Judges: Mrs M Martin, Poole; Mrs A Tilly, Ringwood & Mr J Gorton, Southampton

- HC12 The WARR Perpetual Challenge Cup for the Best Sweet Wine  
HC13 The MORGAN Perpetual Challenge Rose Bowl for the Best Dry Wine  
543 ONE BOTTLE FRUIT WINE, dry  
544 ONE BOTTLE FRUIT WINE, sweet  
545 ONE BOTTLE ANY OTHER WINE, dry  
546 ONE BOTTLE ANY OTHER WINE, sweet  
547 ONE BOTTLE WHITE TABLE WINE, dry to medium dry  
548 ONE BOTTLE RED TABLE WINE, dry to medium dry  
549 ONE BOTTLE OF ROSE WINE  
550 ONE BOTTLE OF SLOE GIN, in clear half bottles with white plastic topped flanged corks  
551 ONE HALF BOTTLE OF LIQUEUR  
552 ONE BOTTLE FARMHOUSE CIDER

## PHOTOGRAPHY

### IMPORTANT NOTE

Photographs must be entered and submitted **PRIOR** to the Show either by sending them to the Show Office before Friday 18th August or to the Homecraft Marquee on the Showground between 2pm and 7pm on Friday 1st September. Entries cannot be made on the day. Entries must be clearly marked on the reverse of the mount with the Exhibitor Name and Class Number.

### PLEASE ENSURE YOU ENTER YOUR PHOTOGRAPH INTO THE CORRECT CLASS

All photographs must be mounted **ONTO** card. Photographic mounts are not allowed. The edges of the photograph must be visible. No photographs to be exhibited in frames or behind glass. Nothing is to be written on the photograph or mount. Photographs to be any size but with a **25.5 cm x 30.5 cm maximum mount size**. All photographs will be attached to display boards using Velcro tabs by our Stewards.

Exhibitors may enter a maximum of 3 entries in any one class

Chief Steward: Mrs Kate Brashaw

Judge: Mr M Macnaughton, Dorchester

- HC18 The ELLIS Perpetual Challenge Cup for the Best Original Print, colour or black and white, in the Photography Classes (Senior or Junior)

## SENIOR CLASSES

- 553 OPEN MONOCHROME, monochrome
- 554 OPEN COLOUR, colour
- 555 SEASCAPE, open
- 556 LANDSCAPES, open
- 557 NATURE, open
- 558 ALL CREATURES LAND OR SEA, open
- 559 PORTRAITS, open
- 560 MANIPULATION PHOTOGRAPHY, open, showing manipulation.

## PHOTOGRAPHY - JUNIOR

### IMPORTANT NOTE

Photographs must be entered and submitted **PRIOR** to the Show either by sending them to the Show Office before Friday 18th August or to the Homecraft Marquee on the Showground between 2pm and 7pm on Friday 1st September. Entries cannot be made on the day. Entries must be clearly marked on the reverse of the mount with the Exhibitor Name and Class Number.

**PLEASE ENSURE YOU ENTER YOUR PHOTOGRAPH INTO THE CORRECT CLASS**

All photographs must be mounted **ONTO** card. Photographic mounts are not allowed. The edges of the photograph must be visible. No photographs to be exhibited in frames or behind glass. Nothing is to be written on the photograph or mount. Photographs to be any size but with a **25.5 cm x 30.5 cm maximum mount size**. All photographs will be attached to display boards using Velcro tabs by our Stewards.

All entries in this section **MUST** clearly state exhibitors age on the entry, Entrant must be 16 years or under on 31st August 2023.

**Exhibitors may enter a maximum of 3 entries in any one class**

**Judge: Mr M Macnaughton, Dorchester**

- HC22 The BRAD MATTHEWS Trophy for the Best Junior Print
- 561 ANY SUBJECT COLOUR, open
- 562 SEASCAPE, open
- 563 NATURE, open
- 564 WILDLIFE / MINI BEASTS, open
- 565 PETS, open
- 566 MANIPULATION PHOTOGRAPHY - JUNIOR, open, colour, showing manipulation

# PRESERVES

Chief Steward: Mrs Dee Reilly

All Exhibits except Chutneys must have been made by the Exhibitor after 1st January 2023. Class labels, which will be supplied by the Society, must be used when staging the exhibits.

## EXHIBITS MUST BE SHOWN IN APPROX. 450g JARS EXCEPT FOR LEMON CURD

Jam, Lemon Curd, Jelly, Marmalade & Mincemeat must be covered with: a lock on (twist top), a rigid plastic cover (neither of these should have a wax disc), or parchment or transparent cellophane (both of these should have wax discs)

Pickles and Chutneys should have rigid, airtight plastic covers or screw tops lined with vinegar proof lining and should be made at least three months prior to the Show.

LABELS MUST BE PLAIN WHITE (Please state date made)

Trade names must not appear on jars or covers.

Cardboard tops, loose cling film or polythene will **NOT** be accepted on any preserve.

Lids must be new.

Judge: Mrs P Wyon-Brown, Axminster

HC5	The BUTT Perpetual Challenge Cup for the Highest Number of Points in the Preserves Section
567	JAR OF STRAWBERRY JAM
568	JAR OF RASPBERRY JAM
569	JAR OF STONE FRUIT JAM
570	JAR OF ANY OTHER JAM
571	JAR OF MARMALADE
572	JAR OF FRUIT CURD, any size
573	JAR OF FRUIT JELLY
574	JAR OF CHUTNEY
575	JAR OF PICKLE

# SCARECROW COMPETITION

All scarecrows will be displayed around the Homecraft marquee on stakes supplied by the Show.

Prize Money: 1st £10; 2nd £5; 3rd £3

576	A TRADITIONAL SCARECROW, any material. To be displayed at the Homecraft Pavilion. A fixed vertical post 135cm high will be provided.
-----	--

## MAJOR SHOW SPONSOR:



# REGULATIONS AND CONDITIONS

This Society is a member of the Association of Show and Agricultural Organisations and endeavours to run its competitions in line with similar shows. Competitors are asked to remember that although great care and attention goes into site planning, it is possible that changes may become necessary, even on the day - should the need arise. Adequate time should be allowed to enter and leave the Showground as traffic delays are a possibility

## GENERAL COMPETITION RULES

1. **Entries** - All entries must be on an official entry form and signed by exhibitor, owner, agent or if under 16 years of age, the exhibitor & parent/guardian. All exhibits must be owned by the exhibitor at the time of making entries. This rule obviously is superseded where exhibits are required to be bred, made or produced by the exhibitor.
2. **Closing Dates** - No entries will be accepted after the relevant closing date.
3. **Refunds** - No refunds can be made for any entry after the relevant closing date.
4. **Safety** - Exhibitors are reminded to comply with all safety regulations relating to themselves, their exhibits and the public.
5. **Accidents** - The Society will not be responsible for any loss, illness, damage or accident that may occur to any animal or article exhibited at the Show. It is a condition of entry that the exhibitor shall hold the Society blameless and indemnify it against any legal proceedings arising from any such accident, loss or illness. All accidents must be reported to the Secretary's Tent.
6. **Prizes** - As printed in the schedule except where the Judge or Section Chairman reserves the right to change for whatever reason. The Judge need not award a first prize.
7. **Prize Money** - This can be collected on Show Day in accordance with the instructions on the reverse of each prize money card. No prize money is given out unless the relevant prize card is handed in. No prize money is sent out, unless requested in writing with the relevant prize card attached.
8. **Judging** - No public will be allowed in the tents or judging rings while judging is in progress. The Judges decision is final.
9. **Entry Tickets** - Each adult (over 16 years) must give up an admission ticket when entering the Showground on show days. Should exhibitors be entitled to exhibitor or vehicle passes these will be dispatched by Friday 30th August. The Society asks all exhibitors to only give free passes to 'bona fide' assistants.
10. **Objections** - An exhibitor making an objection shall do so in writing to the Secretary before 4.00 p.m. (or at close of judging) on the relevant day of the Show and shall deposit the sum of £30. The objector must be an exhibitor in the same class. The Appeals Committee will decide the outcome by 5.00 p.m. that day and in the event of an objection being held invalid the said sum of £30 shall be forfeited to the Society.
11. **Showground Facilities** - Refreshments, toilets and showers are available on the Showground.



12. **Access to the Showground** - Exhibitors are asked to follow the directional signs to the Showground and to allow adequate time for entry to the show site, parking and unloading of their entries.
13. **Opening Hours** - Public opening hours are from 8.30 a.m. to 6.00 p.m. A security and noise curfew is in place after 11.00 p.m. on Friday, Saturday and Sunday of Show weekend
14. **Car & Lorry Parks** - Spaces will be allocated by the car parking steward and should any vehicle be discovered parked incorrectly it will be subject to a fine of £100 and removed. Competitors are asked to remember that adequate time should be allowed to enter and leave the Showground as traffic delays are a possibility. Any cars parked in any unauthorised area will be towed away to the car parking area.
15. **Smoking** - The Society operates a no smoking rule in all tents, judging rings and in the Main Ring
16. **Veterinary & Medical Cover** - These are on site via the Secretary's Tent between 8.00 a.m. and 6.00 p.m. on Show days, after which a call out service is available. Exhibitors are responsible for any treatment costs incurred.
17. **Entry Classes** – if a class receives insufficient entries, Dorchester Agricultural Society reserve the right to merge or amalgamate classes.

## **Homecraft Rules**

1. **Exhibits** - These must not have been shown at the Dorset County Show or Dorchester Show before. All entries must have been made by the exhibitor and staging of entries must be before 7.30 a.m. on Saturday morning. It is a condition that all exhibits must be left on display until 5.30 p.m. on Sunday, but collected before 6:30 p.m. (excluding decorative cake icing exhibits). Non-perishable entries can be collected from the Show Office (by 29th September) by prior arrangement with the Homecraft Chairman during the Show. The Society cannot be responsible for damage or breakages during this period
2. **Vehicle Passes** - Decorative Flower Arranging competitors who make more than two entries will be entitled to a vehicle pass and exhibitor pass.

## **Horticulture Rules**

1. **Rules** - Vegetable classes will be run under National Vegetable Society rulings and Flower classes will be run under Royal Horticultural Society rulings.
2. **Exhibits** - These must be displayed prior to 6.45 a.m. on Saturday 2<sup>nd</sup> September 2023 and it is a condition of entry that all exhibits are displayed until 5.30 p.m. on Sunday
3. **The Heaviest Pumpkin and Marrow** - These must be weighed on the scales provided in the Horticulture Tent. The Steward will record the weights, but is unable to assist moving any heavy exhibits
5. **Vases** - A limited number of specialist exhibition vases are available for flower entries by request on entry form

For clarification of the rules to the various competitions, prior to the Show, please contact the Show Office

# Horticulture at Kingston Maurward College



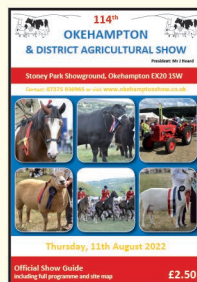
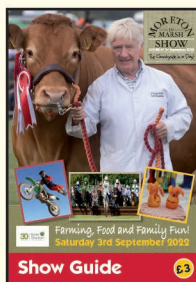
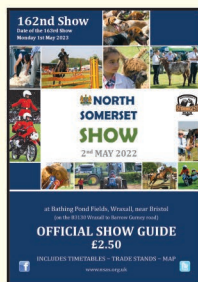
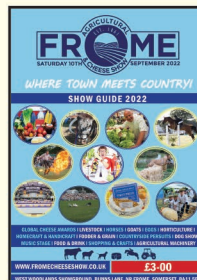
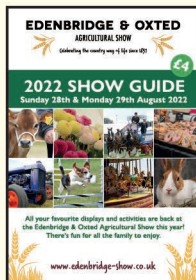
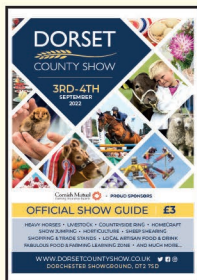
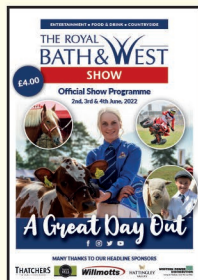
View our courses here:



Kingston Maurward College  
Dorchester, Dorset  
DT2 8PY  
01305 215000  
kmc.ac.uk



• Advertisement Sales • Design and Print • Showground Sales



Running an event? Need a programme? Improve profits! Call:



Graham Walton Publishing Ltd  
Print and Publishing Solutions

Dean, Cranmore, Shepton Mallet, Somerset BA4 4SA

Tel: 01749 880181 Email: [sales@gwpublishing.co.uk](mailto:sales@gwpublishing.co.uk) Website: [www.gwpublishing.co.uk](http://www.gwpublishing.co.uk)

Working in partnership with the Agricultural Show and Event Industries

follow us on Facebook for regular updates "GW Publishing & Event Support Ltd"



# DORSET COUNTY SHOW

2 & 3 SEPT 2023

