

A Sioe Sir Ceredigion BERYSTWYTH Ceredigion County Show



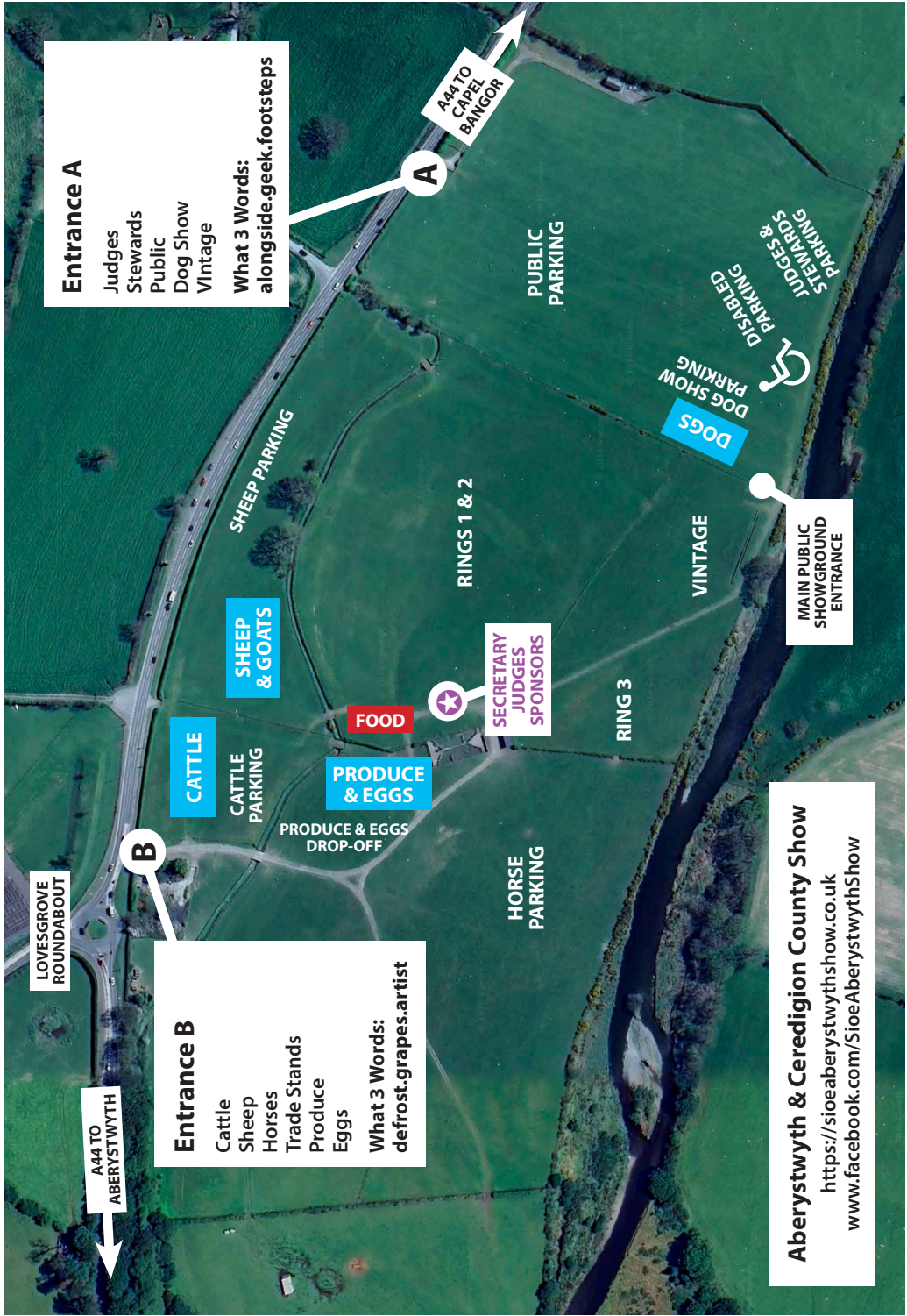
Dydd Sadwrn, Mehefin 13^{eg} 2026

Saturday, June 13th 2026



**Caeau Gelli Angharad
Capel Bangor, Aberystwyth**





Entrance A

- Judges
- Stewards
- Public
- Dog Show
- Vintage

What 3 Words:
alongside.geek.footsteps

A

A44 TO
CAPEL
BANGOR

PUBLIC
PARKING

DOG SHOW
PARKING

DISABLED
PARKING



JUDGES &
STEWARDS
PARKING

MAIN PUBLIC
SHOWGROUND
ENTRANCE

VINTAGE

RING 3

SECRETARY
JUDGES
SPONSORS



FOOD

PRODUCE &
EGGS

PRODUCE & EGGS
DROP-OFF

HORSE
PARKING

SHEEP
& GOATS

CATTLE

CATTLE
PARKING

B

LOVESGROVE
ROUNDABOUT

A44 TO
ABERYSTWYTH

Entrance B

- Cattle
- Sheep
- Horses
- Trade Stands
- Produce
- Eggs

What 3 Words:
defrost.grapes.artist

Aberystwyth & Ceredigion County Show

<https://sioeaberystwythshow.co.uk>

www.facebook.com/SioeAberystwythShow

**Sioe Aberystwyth a Sir Ceredigion
Aberystwyth and Ceredigion County Show**

i'w chynnal ar / to be held at

Gaeau Gelli Angharad

Capel Bangor

Aberystwyth

Drwy ganiatâd caredig / by kind permission of

Teulu Abercwmddolau Family

ar / on

Sadwrn 13 Mehefin 2026

Saturday 13 June 2026

Postal Livestock entries close on 14th May 2026

Online Livestock entries close on 22nd May 2026

NO LATE ENTRIES WILL BE ACCEPTED

www.sioeaberystwythshow.co.uk

Pris Mynediad / Admission:

Oedolion / Adults: £10.00 in advance, £12.00 on Show day

Disgyblion Uwchradd / Secondary School Pupils: £5 in advance, £6 on Show day

Plant Cynradd / Primary school children: AM DDIM / FREE

Please see each section for entry fees

Membership: £10.00

SWYDDOGION / OFFICIALS

Llywydd Anrhydeddus / Hon. President:

Mr & Mrs Iwan Jones, Tanygeulan, Capel Bangor

Llywydd / President:

Yr Athro Wynne Jones, Aberystwyth

Cadeirydd / Chairman:

Mr Guto Lewis, Pendre Llanon

Is-Gadeirydd/Vice-Chairman:

Mrs Jean Evans, Cefnllwynpiod, Llanilar, Aberystwyth

Trysorydd / Treasurer:

Mr Dewi Davies, Penlan, Llanrhystud
accounts@sioeaberystwythshow.co.uk

Horse Section Secretary:

Mrs Mary Marshalsay, Palmon, Llanddeiniol, Ceredigion
Tel: 01974 202971 / 07900 676248

Cattle Section:

Miss Sara Evans, Cefnllwynpiod, Llanilar, Aberystwyth, SY23 4NW Tel: 07397 877096

Sheep Section Secretary:

Mrs Shan Evans, Tanllan, Taliesin, Machynlleth, Powys SY20 8PU Tel: 07724 094574

Poultry Section Secretary:

Mr Wyn James, Fronfraith Fach, Comins Coch, Aberystwyth Tel: 07767 411573

Dog Section Secretary:

Kris Fry, dogsection.abershow@gmail.com

Field Managers:

Gruffydd Rees-Evans and Sion Evans

Trade Stand Enquiries:

<https://sioeaberystwythshow.co.uk/trade-stands/>

General Secretaries:

Anna Bunford-Davies / Meretta Griffiths
Enquiries: info@sioeaberystwythshow.co.uk

AFFILIATED TO:

Shire Horse Society, Welsh Pony & Cob Society, Shetland Pony Stud Book Society, Chaps (UK) 17090, Veteran Horse Society, Association of Shows & Agricultural Organisations, Poultry Club of Wales and Poultry Club of Great Britain.

**Sioe Aberystwyth a Sir Ceredigion
Aberystwyth and Ceredigion County Show**

RULES AND REGULATIONS

1. The Aberystwyth and Ceredigion County Show hereafter referred to as the Society.
2. The aim of the Society is to further and improve all agricultural activities in the area.
3. All exhibits must be the bona fide property of the exhibitors.
4. The Society reserve the right to themselves the power to withhold any of the prizes offered if, in the opinion of the Judges, the exhibits do not possess sufficient merit.
5. The Society, its officers, or servants, shall not be responsible to any persons whatsoever while upon the Society's premises, or while entering or leaving the same, for any damage or loss, however caused to the property of any such person or for any injury, fatal or otherwise, to any such person
6. The Society, its officers, or servants, shall not be responsible for accident, damage or loss, however caused, that may occur to any exhibitor or his servant, or to any animal, article or property brought onto the showground, or car parks, or while entering or leaving or being carried into or out of the said showground or car parks. Each exhibitor shall be solely responsible for any loss, injury or damage that may be done to, or occasioned by, or arising from any animal, article or property exhibited or brought onto the showground or car park by him, and he shall indemnify and hold harmless the Society from and against all such actions, suits and expenses and claims on account of, or in respect of any such damage or injury which may be so caused or occasioned.
7. The showground will open to exhibitors at 7.00am. Judging in the horse section will commence at 9.00am, the sheep and goat section at 09.30am, the cattle and poultry sections at 10.00am; the produce section at 10:45 and the dog section at 11:00am. No exhibits must be removed from their lines, pens, or stages before 4.00pm.
8. A person who wishes to lodge an objection against any exhibit, must do so in writing, and hand into the Secretary's Marquee on the Showground before 4.00pm or within half an hour of the judging of the class, and pay a deposit of £150, which will be returned if the objection is upheld by the Society's committee (their decision in all cases shall be final and from which there shall be no appeal legal or otherwise) otherwise it will be forfeited to the Society.
9. The Society reserve to themselves the right of accepting or rejecting any entry, to cancel any Class or Trade stand, and to expel any person from the Showground.
10. Every person subscribing not less than £10.00 per annum shall become a patron of the Society.
11. Patrons of the show of £10.00 and upwards shall be entitled to exhibit at a reduced rate.
12. The Society reserves the right by itself and by its committee the sole and absolute right of determining the withholding of the show if national or other circumstances in the Committee's opinion necessitate this procedure and accepts no liability for any loss which may be caused to exhibitors or other thereby.
13. All trophies won at this show, except those won outright, to be held for one year only, and must be returned to the Secretary by the 1st May the following year.
14. The Showground is on Farm Assured Land. All dogs must be regularly wormed according to veterinary guidance. Dogs should be kept on a lead. Dogs are strictly not permitted in the Poultry & Produce Marquee except for Assistance Dogs. Owners are also responsible for cleaning up after their dogs.
15. *Fire Precautions*
 - 15.1 No exhibitor may light a fire for any purpose whatsoever unless he or she has the authority of the Society to do so.
 - 15.2 Smoking is prohibited in and around all the Society's structures, i.e., tents and marquees on the showground.
 - 15.3 LPG compound/storage and diesel tanks. Cigarettes, matches etc. must be extinguished before discarding safely in suitable receptacles.

- 15.4 Fire risk assessments are to be completed as required under the Fire Safety Order 2005. All trade stands, catering outlets and areas not directly under the control of the Society will be responsible for the completion of their own assessments.
- 15.5 Exhibitors bringing their own tentage must ensure that it has been treated with a suitable fire retardant.
- 15.6 All trade stands must have an adequate supply of fire extinguishers of a type and size which is suitable to the risk and be easily accessible in the event of a fire. The provision of fire extinguishers is a condition of entry and must be observed by all trade stand holders. The Health & Safety Officer will inspect a sample of trade stands to ensure that fire precautions have been carried out correctly.
16. *Unmanned Aircraft Systems (Drones)*
 - 16.1 No one whatsoever to use a drone on the Show ground without the express permission of the Society. The service provider must be able to provide documentation, e.g. Operational Safety Case Authorisation (OSC) from the CAA.
17. *Photography*
 - 17.1 Photographers who wish to capture the Show for commercial purposes must obtain beforehand the Society's written permission.
18. *Livestock and horses*
 - 18.1 Every exhibitor will be responsible for the correctness of their certificate of Entry. One attendant allowed with each exhibit to a maximum of three in the horse and cattle sections. In the Sheep section one attendant allowed for every three entries to a maximum of three. Lorry driver free. Poultry – Free entry to the Show with five or more exhibits. Any additional attendants will need to pay to enter on the gate.
 - 18.2 An attendant must oversee each exhibit and will be required to conform to any Rules and Regulations the Society may deem it expedient to enforce.
 - 18.3 All classes are for open competition except where otherwise stated.
 - 18.4 Any animal suffering from hereditary or contagious diseases will be disqualified.
 - 18.5 Bulls must be secured by a ring, and all cattle must be haltered.
 - 18.6 Any under 14's showing bulls must be accompanied by an adult.
 - 18.7 In all cattle sections no animal to compete in more than one class except for group and specials.
 - 18.8 In the cattle classes the Judges are instructed to disqualify any cow that appears before them with her teats sealed or her udder in any way "faked". In in-calf heifer classes prizes, will be paid on receipt by the secretary of satisfactory evidence of calving.
19. *Special regulations applying to all horse entries*
 - 19.1 Any person riding a horse or pony anywhere on the showground is required to wear a hat to British Standard specification approved by their appropriate governing body and ensure that the chin strap is fastened.
 - 19.2 Horses must remain in the horse section, horse walks and judging areas only.
 - 19.3 In the interest of safety, all colts and stallions, two years old or over must be suitable bitted and must be led by a handler aged 14 years or older. Age as of 1st January.
 - 19.4 The onus is on every rider who suffers a fall, or anybody who suffers an injury whilst on the showground, to report the fall/injury to the Secretary.
 - 19.5 Parents or other relatives, friends or attendants will not be allowed in the ring during the time the classes are being judged. This rule does not apply to the leading rein class.
 - 19.6 All horses in the restricted-to-height classes if found above the height defined will be disqualified.

TERMS AND CONDITIONS OF ENTRIES

The making of an entry is irrevocable consent for the storage of such information under UK GDPR. Information and results may be provided to and published by the Press and/or, Breed Societies, or any appropriate regulatory authorities.

It is essential that you read all rules and regulations and confirm the acceptance and adherence to those rules on the entry form.

REGULATIONS APPLYING TO TRADE EXHIBITS

1. All trade exhibitors must complete the entry form and complete payment in full using the online booking system prior to the published entry closing date. Note that an earlier deadline applies for free inclusion in the trade stand listing within the catalogue.
2. Exhibitors are not allowed to sub-let any portion of the space allotted to them.
3. The allocation of positions for stands rests entirely with the Society.
4. Exhibitors will be strictly confined to the space allotted and paid for.
5. The Society will not be responsible for any damage, breakage, or loss arising at any point during the period between setup and dismantling.
6. The Society will not be responsible for any accident that may arise from machinery, etc., belonging to any exhibitor.
7. No exhibitor will be allowed to excavate in any part of the stand without permission from the secretary. The cost of reinstating and making good must be defrayed by the Exhibitor.
8. Trade stands and exhibitors with displays/working equipment are expected to provide the Society with their own risk assessments covering their operations
9. Show Stand Safety
 - a. Any lifting appliances used/demonstrated must be examined and documented; this also applies to electrical and gas appliances.
 - b. All temporary structures, Exhibitors must give regard to the stability of their exhibits and ensure that they cannot under reasonable circumstances be knocked over.
 - c. Petroleum product storage must be in accordance with standards laid down by the fire prevention department of Mid and West Wales Fire Service.
 - d. Trade stands who display machinery such as ATV motorbikes are to provide information in the recommendation of wearing of helmets (ideally displaying helmets with the product) as a means of raising the profile of Health and Safety requirements. In addition, highlighting organisations offering free and subsidised H&S ATV training (for example European ATV Safety Institute (EASI) <https://www.quadsafety.org/> and Farming Connect <https://businesswales.gov.wales/farmingconnect/>)
10. Trade exhibitors will be allowed free tickets to the Show for themselves and assistants as follows:

Up to 9m (30ft) frontage – 2 tickets
Over 9m (30ft) frontage – 4 tickets
11. All Trade Exhibitors to clear the Showground within Three Days after the Show.
12. Sites will not be reserved until entry fees are received in full.
13. Aberystwyth & Ceredigion County Show Society give prior notice that it is the direct responsibility of the Trade Stand in question to have full cover in respect of public liability cover.
14. All trade stands to be set up by **8:15am** on the Saturday of the show at the latest.
15. Vehicles to comply with 5mph speed on the Showground.
16. Anyone wishing to erect their stand on the Friday prior to the show should note that the gates will be closed at **8:30pm**, by field security.
17. Trade Exhibitors, please also observe the Society's Rules and Regulations as stated above.

SPECIAL 'A'

A Perpetual Challenge Cup will be awarded for the Best Trade Exhibit.

SAFETY POLICY STATEMENT

The Society is committed to conducting the Show in a manner which, so far as is reasonably practicable, ensures the health, safety and welfare of all persons attending, participating in, or affected by the Show, including exhibitors, stewards, volunteers, contractors, trade exhibitors and members of the public.

The Society will take all reasonable steps to identify hazards associated with the Show and to implement appropriate control measures proportionate to the nature and scale of the activities undertaken.

All persons attending the Show have a duty to co-operate with the Society, comply with these Rules and Regulations, and follow any reasonable instructions given by Show Officials or Stewards in the interest of safety.

Risk Assessment and Responsibilities

The Society will carry out and maintain suitable and sufficient risk assessments for the overall management and operation of the Show. These risk assessments will cover chemicals used, jobs and tasks undertaken, crowd control, and evacuation procedures.

Exhibitors, Trade Stand Holders, Caterers and Contractors must ensure that suitable risk assessments are in place for their activities, comply with relevant legislation, provide safe equipment, and hold appropriate Public Liability Insurance.

Livestock, Animals and Biosecurity

Livestock must always be under the control of competent handlers.

Dogs must be kept on leads and are not permitted in the Poultry and Produce Marquee except Assistance Dogs. All dog owners are required to clean up and properly dispose of their dog's waste in the bins provided.

Biosecurity measures, including handwashing after contact with livestock, should be followed.

Accidents

All accidents, injuries or dangerous occurrences must be reported immediately.

All accidents will be recorded in the Society's Accident book. An accident and emergency book is available at each of the Show's sections. The Show Society will comply with the Reporting of Injuries, Diseases and Dangerous Occurrences Regulations (RIDDOR) 2013.

First aid is provided by a designated group of professionals available at the designated First Aid point.

General Safety Conditions

A site speed limit of 5mph applies. Warning notices must be obeyed.

There will be no vehicle access on the main showground after 08:30am, except for the courtesy cars provided.

The Society reserves the right to remove any person or exhibit presenting an unacceptable safety risk.

Emergency Arrangements

In the unlikely event of an emergency, please remain calm and follow the instructions of the emergency services, Show Officials or Stewards.

We take the safety of our visitors seriously and have appropriate measures in place for your protection, including security arrangements such as bag searches conducted by SIA staff and established emergency procedures and protocols.

A comprehensive Event Management Plan is in place to address a wide range of potential scenarios.

If you have any concerns or see something suspicious, please report to a steward or Show official.

Organisers, Trade Stand Personnel, Contractors

Organisers, Trade Stand Personnel, Contractors, and their respective employees as well as Estate Owners and their Agents are responsible for ensuring that:

- i. Everything reasonably practicable is done to ensure the Health, Safety and Welfare of those attending the Show.
- ii. They conduct themselves, so that they do not put themselves or anyone else at risk.
- iii. The access to and egress from the site is safe and unobstructed.
- iv. Members of the Public and Competitors are equally responsible for ensuring that they do not put other persons at risk and that they co-operate with the organisers in compliance with Health and Safety legislation.
- v. Society officials are responsible for monitoring compliance with health and safety requirements and will take prompt and appropriate action where breaches are identified.

Health and Safety Arrangements

- a) Electricity. All portable electrical equipment brought onto a site should be in a safe and serviceable condition and evidence should be available, via current certification and labelling, that it is maintained correctly, and that the equipment has been subjected to routine inspection and testing by a competent person.
- b) Generators must be positioned well clear of tentage and any other flammable materials.
 - The use of petrol fuelled generators is discouraged in favour of diesel, gas or renewable energy.
 - All generators and bulk storage tanks should be bunded and containers should be of the correct type.
 - The generator and its fuel should not be accessible to members of the public or other unauthorised people.
- c) Liquid Petroleum Gas (LPG) Generators. LPG Generators must be serviced and certified by a registered Gas Safe engineer qualified in CGLP1 non-domestic gas fired generators.

The following safety principles apply as with all other mobile LPG installations:

- a. Minimum distancing of cylinders from ignition sources (including the generator itself) and combustible materials
- b. Stored and sited securely to prevent tampering, with cylinders always stored upright
- c. Sited so it does not present a trip or contact hazard.

- d. Trade Stand personnel and Caterers with LPG appliances should have these examined and tested by a competent person and labelled to indicate the examiner's name and date of examination.
- d) Machinery should only be used by competent people; loaned equipment should be fully serviceable. Plant and machinery should only be operated after adequate safety precautions have been taken. Chainsaw operators should be correctly clothed and equipped. Chains should be of adequate strength and attached to the towing tractor below the axle.
- e) Animals. Routes used by Horses, Public and Vehicles will, as far as possible, be kept separate. Horses are not allowed into the Trade Stand and Catering areas. Dogs should always be kept on a lead. Dogs are strictly not permitted in the Poultry & Produce Marquee (with the exception of Assistance Dogs). Owners are responsible for clearing up after their dogs.
- f) Biosecurity and Animal Health
Key measures include:
- Provision of disinfectant mats for clean and disinfecting footwear
 - Provision and signposting of handwashing facilities
 - Refusal of entry to animals or vehicles posing a disease risk
 - Awareness and reporting of notifiable diseases
- g) Safety Information. Warning notices and signs are prominently displayed.
- h) Toilet Adequate provision has been made for the expected number of visitors.
- i) Food Hygiene. Hygiene certificates will be supplied by food vendors and verified prior to event with the Local Authority's Environmental Health Department. This may be monitored from time to time by Officers from Ceredigion County Council. Failure to respond to compliance requests from them could result in being prohibited from trading on site immediately.
- j) Sale by retail of alcohol. The Show holds a Premises Licence for alcohol sale on and off-site.

Horse Ring 1A	Horse Ring 1B	Horse Ring 2A	Horse Ring 2B	Horse Ring 2C	Horse Ring 3A
09:00	Mountain & Moorland	Coloured Horses & Ponies	Welsh Mountain Ponies	Welsh Ponies	Children's Riding Ponies
10:00	Young Handler Competition				
11:00	Palomino, Dilute or Spotted	Judging of Welsh Champions	Veteran Classes		
12:00					
13:00	Parade of vintage vehicles				
14:00	Ridden Welsh	Shire Horses		Carriage Driving	
15:00	Welsh Part-bred	Shetland Ponies followed by Miniature Shetlands			
16:00	Under 14.2hh In-Hand Championship		Supreme Horse & Pony Championship		

ALL TIMES APPROXIMATE

Whilst every effort has been made with our timetable, it will be inevitable that some classes will clash. In this event, it is the exhibitors' responsibility to decide which class to compete in.

AMSERAU BRAS YN UNIG

Ery gwneir pob ymdrech i luno ein hamserfen, mae'n anochel y bydd rhai dosbarthiadau yn gwrthdaro. Mewn achosion tebyg bydd yn gyfrifoldeb ar yr arddangoswr i benderfynu pa ddsosbathiadau y carent gystadlu ynddynt.

Adran Geffylau Horse Section

Judging of horse section to commence at 9.00am prompt

Entry fees: £12, Members £10

Prizes: 1st - £15, 2nd - £10 and 3rd - £7 in all sections unless otherwise stated.

Horse numbers will be issued on the day, NO passes will be issued beforehand.
Please use Entrance B on the Lovesgrove roundabout.
(What 3 Words///bikes.settle.publisher)

A SILVER MEDAL WILL BE AWARDED BY THE ABERYSTWYTH AND CEREDIGION COUNTY SHOW TO THE BEST EXHIBIT IN EACH OF THE FOLLOWING SECTIONS:
SECTION A, B, C, D, WELSH PART-BRED, WELSH RIDDEN CHAMPION

A WPCS Bronze Medal Rosette will be awarded in each of the following sections:
Section A, B, C, D and Welsh Part-bred.

This show is affiliated to the Welsh Pony and Cob Society. Affiliation No. AF000277. Animals must be entered correctly in line with the rules, detailed in the WPCS Judging and Showing Handbook which can be found on the Society website www.wpcs.uk.com or requested from the WPCS office. Failure to comply with the rules may result in the withholding of awards.

Your personal data

Exhibitor you will need to provide the WPCS with certain personal information relating to you. Your privacy is extremely important to WPCS, so we want you to know exactly how we will use that personal information. Our full privacy notice setting out detailed information about matters such as what personal information we use, for what purpose we use it, what our legal basis for doing so is and who we share your personal information with, can be viewed on our website www.wpcs.uk.com. If you would prefer to see a hard copy of our privacy notice, please ask a member of WPCS staff to provide you with the same.

Did you know?

We now accept online entries

Visit our website for more information

www.sioeaberystwythshow.co.uk

Ceffylau Gwedd Shire Horses

Classes H01–H07 held under Shire Horse Society Rules

*The Show is a qualifier for the Summer Brood Mare Supreme Championship final
to be held at the 2026 National Show*

Judge: Mr A Wass, Staffordshire

- Class H01** Barren Mare or Gelding
Class H02 Mare, in foal or with foal at foot
Class H03 Colt, Gelding or Filly foal out of mare in Class H02. All foals to be at least 3 weeks old on day of show Shire Horses
Class H04 One year old Colt, Filly, or gelding
Class H05 Two- or three-year-old Filly or Gelding
Class H06 Stallion any age
Class H07 Local class. Best Shire horse bred and registered in Ceredigion
Class H08 Ridden Heavy Horse – Open to exhibitors of heavy horses registered in the main British Stud Books of the Shire, Clydesdale, Suffolk, or Percheron Society aged 4 years old or over
- Special 1** **Champion Shire – The Emlyn Lewis Memorial Perpetual Silver Challenge Cup** will be presented to the best exhibit in Shire Classes
- Special 2** **Best Exhibitor of opposite sex Shire Horses – The Brongenau Perpetual Challenge Cup**, presented by Mr & Mrs C.T. Evans, Brongenau Hall, Llandre, will be awarded to the Best Exhibit of opposite sex to Special 1 in the Shire Horse section
- Special 3** **Best Filly, two years old and under, exhibited in the Shire Horse Section – The Heys Moss Rose Perpetual Challenge Cup**, presented by Mrs H.V. Williams, Parc Carnedd, Rhydlewys will be awarded to the Best Filly, two years old and under, exhibited in the Shire Horse Section
- Special 3A** **Best Shire Horse bred and registered in Ceredigion awarded to winner of class H07 – The Millennium Shire Perpetual Challenge Cup** presented by Mr Barry Mathews, for the best Shire Horse bred and registered in Ceredigion, and shown by an exhibitor residing in Ceredigion.
- Special 3B** **Best Mare or Filly in the Shire Classes – The Shire Horse Society offer a Silver Spoon and Rosette** for the Best Mare or Filly in the Shire Classes. The winning animal must be registered in the Stud Book or Grade B register. If not already a member, the winner of the Special Prize must become a member of the SHS. No animal is eligible to take more than one Silver Spoon during one year. The SHS show being excepted. (The winning animal must be free from disease).
- Special 3C** **Best Young Handler in the Shire Section – The Rheidol Shires Perpetual Challenge Cup** presented by Mr & Mrs Barry Matthews, Rheidol Shires, Aberffwrdd, Aberystwyth for the best Young Handler in the Shire Section.

Merlod Mynydd Cymreig (Adran A) Welsh Mountain Ponies (Section A)

*A Silver Medal presented by Aberystwyth and Ceredigion County Show
will be awarded to the best exhibit in this section*

A WPCS Bronze Medal Rosette will be awarded to the best exhibit in this section

Ceredigion Welsh Pony & Cob Association

*Members of the C.W.P.C.A will be awarded points for all classification of all ages
placed in Sections A, B, C, D and Part-bred.*

Judge: Miss L D Mead, Northants (Wensley)

- Class H09** Yearling colt
- Class H10** Yearling Filly or Gelding
- Class H11** Two- or Three-year-old Colt
- Class H12** Two- or Three-year-old Filly or Gelding
- Class H13** Barren Mare or Gelding, 4 years or over
- Class H14** Brood Mare with foal at foot, 4 years old or over
- Class H15** Colt, Gelding or Filly foal out of mare in class 14.
All foals to be at least 3 weeks old on day of show
- Class H16** Mountain Pony Stallion, 4 years old or over
- Special 5** **Champion Welsh Mountain Pony (Section A) – Challenge Cup**, Presented by Aberystwyth Oil Distributors Ltd., will be awarded for the Best Exhibit in Mountain Pony Section. The cup to be won three times in succession or five times in all.
- Special 6A** Best Youngstock Exhibit (3yrs old or under) in the Welsh Mountain Ponies (Section A) classes. A Special Rosette will be awarded to the Best Youngstock Exhibit
- Special 6** **Best Exhibit of Opposite Sex (Section A) – The Derwen Perpetual Challenge Cup**, presented by Messrs E.R. Lloyd and Sons, will be awarded to the best of opposite sex to winner of Special 5
Rosette presented by Lloyd Family Geler stud

Merlod Cymreig (Adran B) Welsh Ponies (Section B)

*A Silver Medal presented by Aberystwyth and Ceredigion County Show
will be awarded to the best exhibit in this section*

A WPCS Bronze Medal Rosette will be awarded to the best exhibit in this section

Ceredigion Welsh Pony & Cob Association

*Members of the C.W.P.C.A will be awarded points for all classification of all ages
placed in Sections A, B, C, D and Part-bred.*

Judge: Miss S Mansfield, Greater Manchester (Janpete)

- Class H17** Yearling colt
Class H18 Yearling Filly or Gelding
Class H19 Two- or Three-year-old Colt
Class H20 Two- or Three-year-old Filly or Gelding
Class H21 Barren Mare or Gelding, 4 years or over
Class H22 Brood Mare with foal at foot, 4 years old or over
Class H23 Colt, Gelding or Filly foal out of mare in class H22.
All foals to be at least 3 weeks old on day of show.
- Class H24** Stallion, 4 years old or over
- Special 7** **Champion Welsh Pony (Section B) – The Evans Bros Estate Agents & Auctioneers Perpetual Challenge Punch Bowl.** This to be won three times in succession before becoming property of the exhibitor.
- Special 8B** **Best Youngstock Exhibit (3yrs old or under) in the Welsh Pony classes (Section B) – The Sarnau Perpetual Cup** in memory of Mrs J Edwards, Sarnau Stud presented for the Youngstock Champion.
- Special 8** **Best Exhibit of Opposite Sex (Section B) – The Gay Thompson Challenge Bowl,** will be awarded to the Best Exhibitor of Opposite Sex to winner of Special 7.
Rosette presented by Lloyd Family Geler stud

Merlod Cymreig Teip Cob (Adran C)
Welsh Pony of Cob Type (Section C)

*A Silver Medal presented by Aberystwyth and Ceredigion County Show
will be awarded to the best exhibit in this section*

A WPCS Bronze Medal Rosette will be presented to the best exhibit in this section

Ceredigion Welsh Pony & Cob Association

*Members of the C.W.P.C.A will be awarded points for all classification of all ages
placed in Sections A, B, C, D and Part-bred.*

Judge: Mr M D Cobley, Cheshire (Tryfel)

- Class H25** Yearling colt
Class H26 Yearling Filly or Gelding
Class H27 Two- or Three-year-old Colt
Class H28 Two- or Three-year-old Filly or Gelding
Class H29 Barren Mare or Gelding, 4 years or over
Class H30 Brood Mare with foal at foot, 4 years old or over
Class H31 Colt, Gelding or Filly foal out of mare in class H30.
All foals to be at least 3 weeks old on day of show. Section C
- Class H32** Stallion, 4 years old or over
- Special 9** **Champion Section C – Perpetual Challenge Cup.** Given in memory of the Late Mr J.F. Lewis, Glanrheidol. Breeder of the Champion Mare 9534 “Piercefield Lady Lillian”.
To be awarded annually at the Society’s Show to the Best Exhibit registered in Section C of the W.S.B., presented by Joan Viscountess Chetwynd.
- Special 10** **Best Exhibit of Opposite Sex (Section C) – Perpetual Challenge Cup,** presented by Mrs I. Davies, in memory of the late Mr. Islwyn Davies, Ivy Bank, Llanbadarn Fawr, will be awarded to the Best Exhibit of Opposite Sex to Special 9.
Rosette presented by Lloyd Family Geler stud
- Special 10A** **Best Youngstock Exhibit (3yrs old or under) – The Davies Bros. Padarn Dairy Perpetual Challenge Cup,** will be awarded to the Best Youngstock Exhibit (3 years old or under) in the Welsh Cob Type (Section C) classes.
- Special 10B** **Aberarth Stud Perpetual Cup** awarded in memory of Hopkin Rowlands, Aberarth Stud will be awarded to the best Section C Cob Foal.

Did you know?

We now accept online entries

Visit our website for more information

www.sioeaberystwythshow.co.uk

Cobiau Cymreig (Adran D) Welsh Cob (Section D)

*A Silver Medal presented by Aberystwyth and Ceredigion County Show
will be awarded to the best exhibit in this section*

A WPCS Bronze Rosette will be awarded to the best exhibit in this section

Ceredigion Welsh Pony & Cob Association

*Members of the C.W.P.C.A will be awarded points for all classification of all ages
placed in Sections A, B, C, D and Part-bred.*

Judge: Mr L J Kirkland, Derbyshire (Shearwater)

- Class H33** Yearling colt
Class H34 Yearling Filly or Gelding
Class H35 Two- or Three-year-old Colt
Class H36 Two- or Three-year-old Filly or Gelding
Class H37 Barren Mare or Gelding, 4 years or over
Class H38 Brood Mare with foal at foot, 4 years old or over
Class H39 Colt, Gelding or Filly foal out of mare in class H38.
All foals to be at least 3 weeks old on day of show. Section D
- Class H40** Stallion, 4 years old or over
- Special 11** **Champion Section D – Perpetual Challenge Cup.** The Cefnendre Perpetual Challenge Cup, presented in memory of the late Mr W.H. Northwood, will be awarded to the best Welsh Cob, registered in Section D of the W.S.B
- Special 12** **Best Exhibit of Opposite Sex (Section D) –The Jim Ystradteilo Perpetual Memorial Cup,** will be awarded to the Best Exhibit of Opposite Sex to winner of Special 11.
Rosette presented by Lloyd Family Geler stud
- Special 13** **Best Youngstock Exhibit (3yrs old or under) – The Ffynnonoer Challenge Cup,** presented in memory of the late Tom Wright, Ffynnonoer, to be won three times in succession or five times in all, will be awarded to the best youngstock exhibit (3 years old or under) in the Welsh Cob (Section D) classes
- Special 13C** **Gwrthafarn Stud Cup** awarded in memory of William and Margaret Rowlands Gwrthafarn Stud will be awarded to the best Section D Cob foal.

Pencampwriaeth Cobiau a Merlod Cymreig Mewn Llaw Welsh Pony and Cob In-hand Championship

A £50 voucher kindly donated by Galloway & MacLeod will be awarded to the Champion in-hand Welsh exhibit

**Judges: Miss L D Mead (Wensley), Miss S Mansfield (Janpete),
Mr M D Cobley (Tryfel), Mrs L J Kirkland (Shearwater)**

- Special 14** **The J.D. Hughes Memorial Challenge Trophy** will be awarded to the Best Exhibit in the Welsh Pony and Cob Classes.
- Special 14A** **The Ifan Phillips Perpetual Memorial Trophy** presented by Barbara, Delyth, Iola and Rhian in memory of Ifan Phillips, Ffynnon Ddu, Clarach will be awarded to the best youngstock exhibit (3yrs old or under) in the Welsh Pony and Cob sections
- Special 14B** **The Fitzgerald Perpetual Trophy** presented by Mr M Fitzgerald, Lancashire will be awarded to the best Welsh foal in the Welsh Pony and Cob Section

Bridiau Cymreig yn caen eu Marchogaeth Ridden Welsh

*A Silver Medal presented by Aberystwyth and Ceredigion County Show
will be awarded to the best exhibit in this section*

A WPCS Performance Medal will be awarded to the Mini and Open/Novice Champions

*Novice classes – Open to competitors who have not won a 1st prize before
1st January of the current year. Suitable snaffle bridle to be worn.*

This is a WPCS Performance Sire Rating Show.

Judge: Mrs Helen Williams, Gwynedd (Seiont)

- Class H41** Open Lead Rein – A or B mares or geldings 4 years and over, not exceeding 122cms. Riders must have attained their 3rd birthday by the day of the competition but must not have attained their 9th birthday before 1st January in the current year. Ponies must be shown in a suitable snaffle bridle – reins to go directly from the bit to the rider's hands. Lead rein must be attached to the noseband only
- Class H42** Open First Ridden – A or B mares or geldings 4 years and over, not exceeding 128cms. Riders must have attained their 3rd birthday by the day of the competition, and not have attained their 12th birthday before the 1st January in the current year. Ponies to be shown in any suitable snaffle bridle. Competitor will not be asked to canter round together.
- Class H43** Novice A and B – Welsh Mountain Pony Section A or Welsh Pony Section B stallion, mare or gelding, shown under saddle. 4 yrs old or over. Open to competitors who have not won a 1st prize before 1st January of the current year. Suitable snaffle bridle to be worn.
- Class H44** Novice C and D – Welsh Pony Cob Type or Welsh Cob stallion, mare or gelding, shown under saddle 4 yrs old or over. Suitable snaffle bridle to be worn. Open to competitors who have not won a 1st prize before 1st January of the current year. Suitable snaffle bridle to be worn.
- Class H45** Open Ridden Welsh Mountain Pony (Section A) Stallion, Mare or gelding shown under saddle 4yrs old or over to be judged at a walk, trot, canter and gallop.
- Class H46** Open Ridden Welsh Pony (Section B) Stallion, Mare or gelding shown under saddle 4yrs old or over to be judged at a walk, trot, canter and gallop
- Class H47** Open Ridden Welsh Pony of Cob Type (Section C) Stallion, Mare or gelding shown under saddle, 4yrs old or over to be judged at a walk, trot, canter and gallop
- Class H48** Open Ridden Welsh Cob (Section D) Stallion, Mare or Gelding shown under saddle, 4yrs old or over to be judged at a walk, trot, canter and gallop
- Class H49** Open Ridden Welsh Part Bred Welsh Part Bred stallion, mare or gelding shown under saddle (any height), 4yrs old or over to be judged at a walk, trot, canter and gallop
- Special 13A** Mini Championship awarded to the Best Exhibit from classes H41 and H42. Suitable snaffle bridle to be worn
- Special 13B** The Rhineland Perpetual Trophy, presented by members of the German Association to commemorate their visit to the Aberystwyth Show in 1995 will be presented to the best Welsh Cob or Cob Type shown under saddle from classes H47 & H48
- Special 15** Open to 1st and 2nd prize-winners of classes H43-H49.
- Special 15a** Open to Champion and Reserve from Special 13A and 15 – A Silver medal presented by Aberystwyth and Ceredigion County Show will be awarded to the winner.

Palomino, Gwanedig neu Smotiog Palominos, Dilute or Spotted

In relation to head wear for Ridden Classes Competitors must wear a scull cap or hat and safety harness according to the current BSI or European Standards at all times.

Judge: Miss Laura Landon-Davies, Carmarthenshire

Class H50	Stallion, Mare or Gelding, four years old and over
Class H51	Yearling, Two or Three-year-old, Colt, Filly or Gelding
Class H52	Stallion, Mare or Gelding shown under saddle 4 years and over
Special 17	The H.F. Eacock Memorial Perpetual Trophy to be held for one year, will be awarded to the Best Exhibit in the Palomino Dilute and Spotted Section

Merlod Ynysoedd y Sietland Shetland Ponies

1. Confined to SPS-BS registered ponies. Ponies must be named on the entry form and in the catalogue if one is produced. Society rosettes must only be given to ponies registered with the Society or to foals eligible for registration.

2. Three-year-old fillies with foals at foot may not be shown. All foals must be a minimum of three weeks old on the day of the Show.

3. **IN ORDER TO ENTER A STALLION CLASS AT AN AFFILIATED SHOW, ENTIRE MALES AGED 4 YEARS OLD AND OVER MUST HAVE AN "S" NUMBER AND HAVE BEEN SUCCESSFULLY THROUGH EITHER THE SPS-BS STALLION ASSESSMENT PRIOR TO 2006 OR THE CURRENT SPSBS VOLUNTARY VETERINARY EXAMINATION.** Ridden stallions MUST display a stallion bridle badge. Inhand entire males 2 years and over are advised to display a stallion bridle badge.

4. There must be no colts or entire males in Young Handlers classes. Children under 14 years old may not show colts (excluding foals) or entire males in In-hand classes. Children under 12 years old on the day of the show may not show entire males in ridden classes. In the interests of safety, hard hats must be worn by all handlers aged 14 years or under in Inhand classes. Exhibitors should not kneel but remain standing while in the ring. Hard hats must be worn by all exhibitors, irrespective of age, in ridden classes. Ridden and driven ponies must be 4 years old or over.

In ridden Classes, if a rider falls off at any time whilst in the ring, both pony and rider must leave the ring, rider dismounted, and take no further part.

All exhibits must be registered or eligible for registration with the Shetland Pony Stud-Book Society, who will award their rosettes to:

- (a) Champion and Reserve Champion Exhibits
- (b) Junior Champion and Junior Reserve
- (c) Best Foal
- (d) Open Ridden
- (e) Best Lead Rein

The South and West Wales Shetland Group Highest placed Members Rosette to be awarded to the highest placed member in each class. Membership cards must be shown.

Judge: Mr R L Griffiths, Gower (Ladbury)

- Class H53** Stallion, three years old and over
Class H54 Mare or Gelding, four years old and over
Class H55 Colt, Gelding or Filly foal out of mare in Class H54.
All foals to be at least 3 weeks old on day of show
Class H56 Two- or three-year-old, Colt, Filly or Gelding
Class H57 Yearling Colt, Filly or Gelding
Class H58 Open Ridden, Ponies four years old and over, rider any age
Special 22 **Perpetual Challenge Cup**, presented by D.A. Hoscroft will be awarded for the Best Exhibit in the Shetland Pony Section

Miniature Shetland Pony

1. Miniature Shetland pony 34 inches or under 1. Confined to SPS-BS registered ponies. Ponies must be named on the entry form and in the catalogue if one is produced. Society rosettes must only be given to ponies registered with the Society or to foals eligible for registration.
2. Three-year-old fillies with foals at foot may not be shown. All foals must be a minimum of three weeks old on the day of the Show.
3. **IN ORDER TO ENTER A STALLION CLASS AT AN AFFILIATED SHOW, ENTIRE MALES AGED 4 YEARS OLD AND OVER MUST HAVE AN "S" NUMBER AND HAVE BEEN SUCCESSFULLY THROUGH EITHER THE SPS-BS STALLION ASSESSMENT PRIOR TO 2006 OR THE CURRENT SPSBS VOLUNTARY VETERINARY EXAMINATION.** Ridden stallions **MUST** display a stallion bridle badge. Inhand entire males 2 years and over are advised to display a stallion bridle badge.
4. There must be no colts or entire males in Young Handlers classes. Children under 14 years old may not show colts (excluding foals) or entire males in In-hand classes. Children under 12 years old on the day of the show may not show entire males in ridden classes. In the interests of safety, hard hats must be worn by all handlers aged 14 years or under in Inhand classes. Exhibitors should not kneel but remain standing while in the ring.

All exhibits must be registered or eligible for registration with the Shetland Pony Stud- Book Society, who will award their rosettes to:

- (a) Champion and Reserve Champion Exhibits
- (b) Junior Champion and Junior Reserve
- (c) Best Foal
- (d) Open Ridden
- (e) Best Lead Rein

The South and West Wales Shetland Group Highest placed Members Rosette to be awarded to the highest placed member in each class. Membership cards must be shown.

Judge: Mrs D M Griffiths, Gower (Ladbury)

- Class H59** Miniature Stallion three years and over
Class H60 Miniature Mare or Gelding four years old and over
Class H61 Miniature Colt, Gelding or Filly foal out of mare in Class H60.
All foals to be at least 3 weeks old on day of show
Class H62 Two or Three year old Colt, Filly or gelding
Class H63 Yearling Colt, Filly or Gelding
Special 22A Best exhibit in the Miniature Shetland Pony Section

Ceffylau Hela, Hac, Marchogaeth a Marchogaeth Dull Ochr Gyfrwy Sport Horse, Hunter Riding, Hacks, Riding Horses & Side Saddle

In relation to headwear – competitors must wear a skull cap or hat and safety harness according to the current approved BSI or European Standard at all times. Skull caps must have a blue or black cover. Any competitor not adhering to this will be asked to leave the ring/class.

Judge: Mr Bobby Thomas, Carmarthenshire

- Class H64** Sport Horse 3 years old or under to be shown in hand
- Class H65** Small Hunter, 4 years old or over exceeding 148 cms. (14.2 hh) but not exceeding 158cms (15.2hh)
- Class H66** Lightweight Mare or gelding 4 years old or over capable of carrying 14 stone and under
- Class H67** Heavyweight Mare or gelding 4 years old or over capable of carrying over 14 stone
- Class H68** Local (confined to the County of Ceredigion) Hunter 4yrs old and over (Winner is not eligible for Special 29).
- Class H69** Open Hack, Mare or Gelding, 4 years old and over, mixed height. Winner of class H64 will be awarded The Robert Oliver Perpetual Challenge Trophy.
- Class H70** Small Riding Horses, Mares or Geldings 4 years old and over exceeding 148 cms and not exceeding 158 cms. Riders to have attained their 15th birthday before 1st January in the current year
- Class H71** Large Riding Horses, Mares or Geldings, 4 years old and over exceeding 158 cms. Riders to have attained their 15th birthday by 1st January in the current year.
- Class H72** Side saddle – Open Class. The age for juniors is having obtained their 5th birthday and under 18 on the 1st of January of the current year. A Perpetual Silver Trophy, presented by Mrs Karen Evans, will be awarded to the winner of H67 to be held for one year.
- Special 29** **Jillian Webb Perpetual Memorial Trophy** kindly donated by Mr W L Davies Esgairnewydd, in memory of the late Jill Webb, devoted friend and partner for 16 year, will be awarded to the Champion in class H59-H62 (winner of class H63 not eligible).
- Special 33A** **The Thomas Bros Perpetual Challenge Trophy** will be presented by Messrs Thomas Bros. Y Felin, Penrhyncoch for the best exhibit in the Riding Horse classes H70 and H71.

Merlod Marchogaeth i Blant Children's Riding Ponies

Correct age of rider must coincide with current British Show Pony Society rules regarding appropriate age of rider and height of pony.

Judge: Mr Bobby Thomas, Carmarthenshire

- Class H73** Novice Show Pony or Show Hunter Pony, Mare or Gelding, not exceeding 148cms. Riders not to have attained their 20th birthday before 1st January in the current year. Riders to be the correct age for the height of pony they ride. Open to ponies 4 years old and over

- Class H74** Mixed Height Open Show Pony 14.2hh & under – rider to be the correct age for the height of the pony they ride. Open to ponies 4 years old and over.
- Class H75** Mixed Height Open Show Hunter Pony 15hh & under – rider to be the correct age for the height of the pony they ride. Open to ponies 4 years old and over.
- Class H76** Open Show Pony / Show Hunter Pony Intermediate Pony not exceeding 158cms. Rider to be the correct age for the height of the pony
- Class H77** Leading rein pony 4 years old and over – not exceeding 122cms. Rider not to have attained their 8th birthday.
- Class H78** First Ridden Pony not exceeding 122cms – rider not to have attained their 10th birthday
- Special 38** **Challenge Cup** presented by Teulu Evans, Cefnllwynpiod, will be awarded to the Best Exhibit in Classes H73–H76. This Cup to be won three times, not necessarily in succession.
- Special 39** **A Perpetual Challenge Cup** presented in memory of Mrs Betty Seaton Evans will be awarded for the Best Exhibit in the Leading Rein and First Ridden Classes (Classes H77-H78).

Rhan-Frid Cymreig Welsh Part-bred

A Silver Medal presented by Aberystwyth and Ceredigion County Show will be awarded to the best exhibit in this section

These classes are open to both Horses and Ponies, and animals contesting them must be registered or applied for registration in the WPCS WP-BR Register.

The Welsh Part-bred section will be run under WPCS rules.

This Section is a qualifier for The National Welsh Championship Show 2025 – National WPBR In-Hand Championship . The Section Champion, Reserve & Youngstock Champion (not already qualified) qualify to enter.

This Section is a qualifier for The National Welsh Championship Show 2025 – National Gelding In-Hand Championship sponsored by Sarum Stud. All 1st & 2nd placed WPCS registered geldings in relevant classes (not already qualified) qualify to enter.

Ceredigion Welsh Pony & Cob Association

Members of the C.W.P.C.A will be awarded points for all classification of all ages placed in Sections A, B, C, D and Part-bred.

Judge: Miss S Mansfield, Greater Manchester (Janpete)

- Class H79** Yearling colt, filly or gelding not exceeding 148cms at maturity. Welsh Part-bred
- Class H80** Two- or three-year-old colt, filly or gelding not exceeding 148cms at maturity
- Class H81** Stallion, mare or gelding; four years old or over not exceeding 148cms.
- Class H82** Yearling colt, filly or gelding exceeding 148cms at maturity
- Class H83** Two- or three-year-old colt, filly or gelding exceeding 148cms at maturity
- Class H84** Stallion, mare or gelding; four years old or over exceeding 148cms
- Special 46A** **The Williams and Williams Veterinary Surgery Perpetual Challenge Trophy** will be awarded to the Champion horse or pony in the Welsh Part-bred Section
- Special 46** **The Sarnau Perpetual Cup**, awarded in memory of Mrs J Edwards, Sarnau Stud for the best two or three year in the Welsh Part-bred (between winner of class H80 and H83).

Ceffylau Lliw Coloured Horses and Ponies

This section is sponsored by Spirit Equine Mrs Fiona Richardson

This show is affiliated to the Coloured Horse & Pony Society (UK). Affiliation Number:19158. Both the owner and the rider/exhibitor need not be a member of CHAPS (UK) nor must the horse or pony be registered with CHAPS (UK) to compete.

However in order to qualify, both owner and rider/exhibitor need to be a current showing member and present their valid Qualifier card IN THE RING for signing by the judge.

Members to apply in writing to CHAPS (UK) for appropriate qualifier card. The CHAPS (UK) Championship Show will be held on 20–22 August 2026. Shows held on or after the Postal Entry closing date of Championship Show will count as 2027 qualifiers. The following classes are CHAPS (UK) Qualifiers (classes H84–89).

Judge: Ms Abigail Pearce, Carmarthenshire

- Class H85** CHAPS (UK) Non – Native Open In-Hand Qualifier 4 years old or over. Open to any size horse/pony, to be shown plaited and trimmed.
- Class H86** CHAPS (UK) Native/Cob/Traditional Open In-Hand Qualifier 4 years old or over. Open to any size horse/pony, to be shown in natural state or fully trimmed and hogged
- Class H87** CHAPS (UK) Open Youngstock Qualifier – Yearlings only
- Class H88** CHAPS (UK) Open Youngstock Qualifier – 2 or 3 year old to be shown inhand
- Class H89** CHAPS (UK) Non-Native Open Ridden Qualifier four year old and over. Open to horses/ponies of any height, to be shown plaited or trimmed. All exhibits to perform individual show and will not be ridden by the judge.
- Class H90** CHAPS (UK) Native/Cob/Traditional Open Ridden Qualifier – four years old and over. Open to horses/ponies of any height, to be shown in natural state or fully trimmed and hogged. Exhibits will not be ridden by the judge
- Special 46B** **A Perpetual Challenge Trophy** will be awarded to the Champion horse or pony in the Coloured Horse Section.

Ceffylau Hŷn Veteran Classes

This section is sponsored by Spirit Equine Mrs Fiona Richardson

Veteran Horse Society – AREA QUALIFIER 2026.

First round qualifier for the Veteran Horse Society Supreme Final:

VETERAN HORSE OF THE YEAR 2025

Kindly Sponsored by Allen & Page.

Open to members and non-members. All competitors and grooms must adhere to VHS Rules in all circumstances. Failure to do so may result in immediate disqualification.

VHS Regional Final qualification. *All competitors placed 1st to 4th in each age category will qualify for the corresponding class at VHS Regional Finals. Members must carry their cards in the ring and have their showing card signed by the judge in the ring as proof of qualification. Non-members will receive a red qualification card which can be exchanged for signed showing card when applying for VHS membership. **This MUST be done within 21 days of qualification.** It is the competitors' responsibility to present their Showing card to the judge.*

Regional Finals are open to members only.

All competitors are eligible to enter open classes at the National Veteran Championships, to be held at Arena UK Lincolnshire on 4th to 6th September 2026. No qualification or membership necessary. See VHS website for schedule.

For further information please visit the VHS website www.veteran-horse-society.co.uk or telephone the VHS Show Office on 01239 881300 or 07789 514004.

Judge: Ms Abigail Pearce, Carmarthenshire

- Class H91** Veteran In-Hand, Combined Age Class (15 years and over). To be run as one class but judged as separate age categories: Diamond Veteran (25 years and over), Veteran (20–24 years) & Pre-Veteran (15–19 years). Open to horses and ponies of any breed and height.
- Class H92** Veteran Ridden, Combined Age Class (15 years and over). To be run as one class but judged as separate age categories: Diamond Veteran (25 years and over), Veteran (20–24 years) & Pre-Veteran (15–19 years). Open to horses and ponies of any breed and height.
- Special 51** **The Jane Jones and Family of Bancyffordd Perpetual Cup** to be awarded to the best exhibit in the Veteran Section.

Merlod Mynydd a Gweundir Mountain & Moorland

This is a WPCS Performance Sire Rating Show.

Judge: Miss Laura Landon-Davies, Carmarthenshire

- Class H93** Mixed In-Hand Mountain & Moorland Small Breeds, any age. Registered in their respective Pure Breed Society Stud Book of Dartmoor, Exmoor, Shetland, Welsh Section A & B.
- Class H94** Mixed In-Hand Mountain & Moorland Large Breeds, any age. Registered in their respective Pure Breed Society Stud Book Connemara, Dales, Fells, Highland, Newforest, Welsh Section C & D
- Class H95** Leading Rein Mountain & Moorland. Registered in their respective Pure Breed Society Stud Book Mare or Gelding 4yrs old or over not exceeding 122cms. Rider not to have attained their 9th birthday before 1st January in the current Year – to be led by an attendant and shown in Snaffle Bridles, lead rein to be attached to the noseband only.
- Class H96** First Ridden Mountain & Moorland. Registered in their respective Pure Breed Society Stud Book Mare or Gelding 4 yrs old or over not exceeding 128cms and rider not to have attained their 12th birthday before the 1st January in the current year. Ponies may be shown in any suitable bridle.
- Class H97** Mixed Ridden Mountain & Moorland Small Breeds. Registered in their respective Pure Breed Society Stud Book Dartmoor, Exmoor, Shetland, Welsh Section A & B. Stallion, Mare or Gelding 4yrs old or over. Rider any age.
- Class H98** Mixed Ridden Mountain & Moorland Large Breeds. Registered in their respective Pure Breed Society Stud Book Connemara, Dales, Fells, Highland, Newforest, Welsh Section C & D. Stallion, Mare or Gelding 4yrs old or over. Rider any age.
- Special 50** **The Castle Rosettes Challenge Trophy** will be presented to the Best Exhibit in the Mountain and Moorland classes.

Cystadleuaeth Tywysydd Ifanc Young Handler Competition

HARD HATS MUST BE WORN

Rosettes to all competitors.

*Turn-out of exhibit and handler and ring performance will be judged,
not the conformation of the horse or pony*

Prize money to be paid as cash on day of show. 1st £10, 2nd £7; 3rd £5

Judge: Miss Laura Landon-Davies, Carmarthenshire

- Class H99** Best Child Handler in the Horse / Pony section aged 3 and under 8 years of age on 1st January 2026. Mares, Fillies or Geldings
- Class H100** Best Child Handler in the Horse / Pony section aged between 8 and under 12 years of age on 1st January 2026. Mares, Fillies or Geldings
- Class H101** Best Child Handler in the Horse / Pony section aged between 12 and 16 years of age on 1st January 2026. Mares, Fillies or Geldings

Adran Yrru Carriage Driving

*All competitors must have proof of third-party liability insurance such as
British Driving Society membership. Children under the age of 14 must wear hard hats*

Judge: Mr D S Lloyd, Lampeter (Llysteifi, Teifi)

- Class H102** Open Private Driving singles, pairs or tandem for equines 4 years old and over to a traditional type turnout. Exhibit to be shown in vehicle other than show wagon and to be judged as a complete turnout, i.e. horse & harness, vehicle and their suitability as a private driving turnout. If sufficient entries, classes will be split into 2 – under 13.2hh and over 13.2hh.
- Class H103** Harness Class, Open to a single Welsh Pony or Cob, Stallion, Mare or Gelding 4 years old and over to be shown in single Harness to a Show Wagon or Viceroy.
- Class H104** Exercise Vehicle Class, open to singles, pairs or tandems of equines, 4 years old and over. Open also to Novices. To be shown in an exercise vehicle (excluding Traditional Type vehicles and show wagons) and judged as a complete turnout, i.e. Horse, Harness and Carriage and their suitability as a safe road turnout.
- Special 49** **The Llwynhefin Perpetual Memorial Cup**, presented in memory of the late Mr. W. Jenkins, will be awarded for the Best Exhibit in Harness Section, to be held for one year.

**Pencampwriaeth mewn Llaw dan 14.2hh (148cm)
The under 14.2hh (148 cm) In-hand Championship**

Failure to come forward, will result in prize money being forfeited.

Judge: Mr Bobby Thomas, Carmarthenshire

- Special 25** The under 14.2h.h. (148 cms) In-Hand Championship. The Champion and Reserve Champion from all the In-Hand pony sections are eligible to compete, as well as the winner from pony section 148 cms and under that do not have their own section championship. All ponies eligible are subject to the height limit of 148cms.

**PENCAMPWR ADRAN GEFFYLAU
SUPREME HORSE & PONY CHAMPIONSHIP
– CWPAN ARTHEN**

ALL CHAMPIONS TO COME FORWARD TO COMPETE

Failure to come forward to this championship will result in your prize money being forfeited.

Judge: Mrs A P Harries, Plwmp (Tydi)

- Special 52** **Cwpan ARTHEN Perpetual Cup** Presented by the Aberystwyth and Ceredigion County Show committee in memory of John L Davies (John "Rhiwarthen") a long serving member of this committee. This will be presented to the Supreme Horse Champion
- Special 53** **A crystal decanter** presented by Evans Bros. Auctioneers Aberaeron will be perpetually awarded to the reserve supreme champion in the horse section.

Did you know?

We now accept online entries

Visit our website for more information

www.sioeaberystwythshow.co.uk

ADRANY GWARTHEG CATTLE SECTION

NOTICE TO ALL EXHIBITORS

The show will operate under current DEFRA Regulations.

Exhibitors must bring the relevant cattle passports to the show for all cattle as details will be taken from every passport and sent to BCMS.

Failure to do so will result in instant disqualification.

Holding no. 55/269/8635-01

All entries in the Cattle Section to be sent to the Cattle Secretary

Cattle judging to commence at 10:00am prompt

**Entry Fees: Non-Members £6, Members £4, Young Handlers Free
Pairs: Non-Members £3, Members £2**

Prizes: £15, £10, £7

Group Classes: £10, £8, £5

Gwartheg Duon Cymreig Welsh Black Cattle

Judge: Mr Gwynfor Evans, Gwynedd

Class CA1	Bull born on or before 31st December 2024
Class CA2	Bull born on or after 1st January 2025
Class CA3	Cow in calf, or with calf at foot
Class CA4	Heifer born on or before the 31st of March 2025
Class CA5	Heifer or heifer calf born after the 31st of March 2025
Class CA6	Best pair of cattle, the property of the exhibitor <i>The animals within this class must have been exhibited in other classes.</i>

Special 50 Best Exhibit in the Welsh Black Cattle Section

Best Male Welsh Black Cattle Section: Champion Male card will be awarded by Aberystwyth Show to the Best Male exhibit to go forward into Special 62

Champion Female Welsh Black Cattle Section: Champion Female card will be awarded by Aberystwyth Show to the Best Female Welsh Black exhibit to go forward into Special 63

Did you know?

We now accept online entries

Visit our website for more information

www.sioeaberystwythshow.co.uk

Gwartheg Limousin Prydeinig British Limousin Cattle

Judge: Mr Iolo Jones, Bala

- Class CA7** Bull born on or before 31st December 2024
Class CA8 Bull born on or after 1st January 2025
Class CA9 Cow in calf, or with calf at foot
Class CA10 Heifer born on or before the 31st of March 2025
Class CA11 Heifer or heifer calf born after the 31st of March 2025
Class CA12 Best pair of cattle, the property of the exhibitor
The animals within this class must have been exhibited in other classes.

Special 55 Best Exhibit in the Limousin Section

Best Male British Limousin: Champion Male card will be awarded by Aberystwyth Show to the Best Male exhibit in the British Limousin section to go forward into Special 62

Champion Female British Limousin: Champion Female card will be awarded by Aberystwyth Show to the Best Female exhibit in the British Limousin Section to go forward into Special 63

Gwartheg Highland Highland Cattle

Highland Cattle Club of Wales National Show

The Highland Cattle Club of Wales will be awarding rosettes in this section.

Judge: Mr Geoff Spawton, Lampeter

- Class CA13** Bull any age
Class CA14 Cow in calf, or with calf at foot
Class CA15 Heifer born in 2023
Class CA16 Heifer born in 2024
Class CA17 Heifer born in 2025
Class CA18 Calf born on or after 1st January 2026
Class CA19 Best pair of cattle, the property of the exhibitor
The animals within this class must have been exhibited in other classes.

Special 55E Best Exhibit in the Highland Section

Champion Male Highland Cattle: Champion Male card will be awarded by Aberystwyth Show to the Best Male exhibit in the Highland Cattle section to go forward into Special 62

Champion Female Highland Cattle: Champion Female card will be awarded by Aberystwyth Show to the Best Female exhibit in the Highland Cattle section to go forward into Special 63

Unrhyw Frîd Cyfandirol Arall Any Other Continental Breed

Judge: Mr Iolo Jones, Bala

- Class CA20** Bull born on or before 31st December 2024
Class CA21 Bull born on or after 1st January 2025
Class CA22 Cow in calf, or with calf at foot
Class CA23 Heifer born on or before the 31st of March 2025
Class CA24 Heifer or heifer calf born after the 31st of March 2025
Class CA25 Best pair of cattle, the property of the exhibitor
The animals within this class must have been exhibited in other classes.

Special 55F Best Exhibit in the Any Other Continental Cattle Section

Champion Male Any Other Continental Breed Cattle Section: Champion Male card will be awarded by Aberystwyth Show to the Best Male exhibit in the Any Other Continental Section to go forward into Special 62

Champion Female Any Other Continental Breed Cattle Section: Champion Female card will be awarded by Aberystwyth Show to the Best Female exhibit in the Any Other Continental Section to go forward into Special 63

Unrhyw Frîd Prydeinig Arall Any Other Native Breed

Judge: Mr Gwynfor Evans, Gwynedd

- Class CA26** Bull born on or before 31st December 2024
Class CA27 Bull born on or after 1st January 2025
Class CA28 Cow in calf, or with calf at foot
Class CA29 Heifer born on or before the 31st of March 2025
Class CA30 Heifer or heifer calf born after the 31st of March 2025
Class CA31 Best pair of cattle, the property of the exhibitor
The animals within this class must have been exhibited in other classes.

Special 55G Best Exhibit in the Any Other Native Cattle Section

Champion Male Any Other Native Breed Cattle Section: Champion Male card will be awarded by Aberystwyth Show to the Best Male exhibit in the Any Other Native Section to go forward into Special 62

Champion Female Any Other Native Breed Cattle Section: Champion Female card will be awarded by Aberystwyth Show to the Best Female exhibit in the Any Other Native Section to go forward into Special 63

Gwartheg Biff Masnachol Commercial Beef Cattle

Judge: Mr Owain Morgan, Dolgellau

- Class CA32** Best Calf under 300kg
Class CA33 Best steer, any age
Class CA34 Best heifer, any age
Class CA35 Best pair
- Special 56** Best Exhibit in the Commercial Beef Cattle Section
A goodie bag kindly given by Semex UK (Owain Morgan 07946586444) will be awarded to the Champion.

Gwartheg Holstein Friesian Holstein Friesian Cattle

Judge: Mr Andrew Kennedy, Northern Ireland

- Class CA36** Heifer calf not more than 10 months old on day of Show
Class CA37 Heifer 10 to 20 months old on day of Show
Class CA38 Heifer in calf not more than 3 years old on day of Show
Class CA39 Heifer in milk
Class CA40 Cow in calf
Class CA41 Cow in milk
Class CA42 Best Pair of Holsteins – property of the same owner
- Special 58** Best Exhibit in the Holstein Friesian Section

*Holstein UK will award their rosettes to the Champion and Reserve Champion.
Holstein UK will award a rosette to the Junior Champion.
Holstein UK award their rosette to the Best Exhibitor Bred Animal.
Holstein UK offers a rosette to the Best Udder in the Show.*

Unrhyw Fríd Godro Arall Any other Dairy Breed

Judge: Mr Andrew Kennedy, Northern Ireland

- Class CA43** Heifer calf not more than 10 months old on day of Show
Class CA44 Heifer 10 to 20 months old on day of Show
Class CA45 Heifer in calf not more than 3 years old on day of Show
Class CA46 Heifer in milk
Class CA47 Cow in calf
Class CA48 Cow in milk
Class CA49 Best Pair of any other dairy breed – property of the same owner
- Special 58A** Best Exhibit in the Any Other Dairy Breed section

Dangoswyr Iau Gwartheg Biff Junior Beef Handlers

Judge: Mr Owain Morgan, Dolgellau

Prize money to be paid as cash on day of show. 1st £10, 2nd £7; 3rd £5

- Class CA50** Child under 8 years of age on show day handling a calf (under 12 months old)
Class CA51 Child aged between 8 and 12 years of age on show day handling a calf (under 12 months old)
Class CA52 Child aged between 13 and 16 years of age on show day handling a uncalved heifer any age

Championship Junior Beef Handlers: Champion and reserve champion rosettes will be awarded to the Champion and reserve champion Junior Beef Handler.

A special prize kindly donated by Downes Veterinary Services will be awarded to both the champion and reserve.

Dangoswyr Iau Gwartheg Godro Junior Dairy Handlers

Judge: Mr Andrew Kennedy, Northern Ireland

Prize money to be paid as cash on day of show. 1st £10, 2nd £7; 3rd £5

- Class CA53** Child under 8 years of age on show day handling a calf (under 12 months old)
Class CA54 Child aged between 8 and 12 years of age on show day handling a calf (under 12 months old)
Class CA55 Child aged between 13 and 16 years of age on show day handling a uncalved heifer any age

Championship Junior Dairy Handlers: Champion and reserve champion rosettes will be awarded to the Champion and reserve champion Junior Dairy Handler.

A special prize kindly donated by Downes Veterinary Services will be awarded to both the champion and reserve.

Did you know?

We now accept online entries

Visit our website for more information

www.sioeaberystwythshow.co.uk

Pencampwriaeth Gwartheg Godro Dairy Interbreed

Judge: Mr Andrew Kennedy

- Special 59** Best Dairy Cow
A voucher kindly given by Semex UK (Owain Morgan 07946 586444) will be awarded to the Champion.
- Special 60** Best Dairy Heifer
A leather halter kindly donated by Gerwyn Jones of World Wide Sires (07870 589892) will be awarded to the champion.
- Special 61** Local Champion
Best Dairy Cow or Heifer of any breed, in milk or in calf, confined to the Aberystwyth and Rural District area (SY23 and SY24). A voucher kindly given by Semex UK (Owain Morgan 07946 586444) will be awarded to the Champion.
- Special 61A** Best Dairy Pair
Richard & Sarah Hughes, RS Nutrition have kindly awarded £60 to the winner of Special 61A and £40 to the reserve.
- Special 61B** Supreme Dairy Champion
The Supreme Dairy animal will receive £50 kindly awarded by Halls Auction Centre Shrewsbury.

Aberystwyth Breeders Club

*Points will be awarded to fully paid up members of the Aberystwyth Breeders Club in each of the dairy classes.
£75 will kindly be awarded by Owain Jenkins of Jenkins Hoofcare (07535 742109) to the member with the most points and £25 to the reserve.*

Pencampwriaeth Bridiau Gwartheg Biff Beef Interbreed Championship

Judge: Mr Gwyn Edwards

- Special 62** Best Pedigree Beef Bull
- Special 63** Best Pedigree Beef Female
- Special 64** Best Beef Pair
A £50 voucher kindly given by Cigydd Sion Jones Butcher (01974 202864) will be awarded to the Champion Beef Pair.

Best Pedigree Animal in the Beef Section. Winners of Special 62 and Special 63 will go head-to-head to be crowned the overall beef interbreed champion of the show.

- Special 64A** Supreme Beef Champion
A £50 voucher will be kindly awarded by Rattray's Butchers (01970 615353) to the Supreme Champion.

Adran Ddefaid Sheep Section

The Show will operate under current DEFRA regulations.

All exhibitors must provide completed Movement Licences (AML1) for both ON and OFF movements

Sheep Health Scheme Herds: A separate designated penning area will be provided for Maedi-Visna Accredited Flocks participating in the above scheme.

EXHIBITORS MUST DECLARE MAEDI-VISNA STATUS ON ENTRY FORM

Holding no. 55/269/8635

Entry Fees: Non-Members £4.00, Members £2.00, All Group Classes: £1

Prizes: £10; £6; £4. Group classes: £5; £4; £3

Rosettes will be awarded for 1st to 6th in classes with 10 or more entries forward

Judging of the Sheep section is to commence at 9:30am prompt with the Young Handler Section.

An order of judging will be published prior to the show.

IT IS THE RESPONSIBILITY OF ANY EXHIBITOR WHO ENTERS MULTIPLE BREEDS TO ENSURE THAT THEY HAVE ENOUGH HANDLERS, SHOULD THEIR CLASSES BE RUNNING AT THE SAME TIME.

Defaid Mynydd Cymreig, Diadell Mynydd Welsh Mountain Sheep, Hill Flock

Beirniad/Judge: Mr Tudor Williams, Llansannan

Class SH1	Ram two years old and over
Class SH2	Shearling ram
Class SH3	Ram Lamb
Class SH4	Ewe, two years old and over
Class SH5	Shearling ewe
Class SH6	Ewe Lamb
Class SH7	Pen of one male and two females

Champion and Reserve Champion rosettes will be awarded for the Best Male and Best Female. Champion Female will represent the breed in **Special 87**. and Champion Male will represent the breed in **Special 87A**.

Overall Champion and Reserve Champion rosettes will be awarded.

Special 65 A Cup will be awarded for the best exhibit in the Welsh Mountain Sheep Section

Defaid Mynydd Cymreig Pedigri Pedigree Welsh Mountain Sheep

Beirniad/Judge: Miss Mona Williams, Llansannan

Class SH8	Ram two years old and over
Class SH9	Shearling ram
Class SH10	Ram Lamb
Class SH11	Ewe, two years old and over
Class SH12	Shearling ewe
Class SH13	Ewe Lamb
Class SH14	Pen of one male and two females

Champion and Reserve Champion rosettes will be awarded for the Best Male and Best Female. Champion Female will represent the breed in **Special 87**. and Champion Male will represent the breed in **Special 87A**.

Overall Champion and Reserve Champion rosettes will be awarded.

Points will be awarded towards the J O Pritchard Ram of the Year Trophy Award, the H L and O E Roberts Female of the Year Trophy and the Bowden Family Trophy for the Best Group of 3 of the Improved Welsh Mountain Sheep Society Pedigree Section.

Special 66 The ICI Challenge Cup presented by ICI Pharmaceutical Division, will be awarded to the Best Exhibit in the Welsh Mountain Pedigree Sheep Section

Defaid Mynydd Cymreig – Teip Tregaron Welsh Mountain Sheep – Tregaron Type

Beirniad/Judge: Mr Rhys Lewis, Llanfihangel y Creuddyn

Class SH15	Ram two years old and over
Class SH16	Shearling ram
Class SH17	Ram Lamb
Class SH18	Ewe, two years old and over
Class SH19	Shearling ewe
Class SH20	Ewe Lamb
Class SH21	Pen of one male and two females

Champion and Reserve Champion rosettes will be awarded for the Best Male and Best Female. Champion Female will represent the breed in **Special 87**. and Champion Male will represent the breed in **Special 87A**.

Overall Champion and Reserve Champion rosettes will be awarded.

Special 66A A perpetual cup donated by Aneurin Evans, Brynperffraith will be awarded to the best exhibit in the Tregaron Welsh Mountain Sheep section

Defaid Penfrith Cymreig Welsh Hill Speckled Face Sheep

Beirniad/Judge: Mr Wyn Roberts, Llangadfan

Class SH22	Ram two years old and over
Class SH23	Shearling ram
Class SH24	Ram Lamb
Class SH25	Ewe, two years old and over
Class SH26	Shearling ewe
Class SH27	Ewe Lamb
Class SH28	Pen of one male and two females

Champion and Reserve Champion rosettes will be awarded for the Best Male and Best Female. Champion Female will represent the breed in **Special 87**. and Champion Male will represent the breed in **Special 87A**.

Overall Champion and Reserve Champion rosettes will be awarded.

Special 67 A perpetual cup donated by the Aberystwyth Show will be awarded to the best exhibit in the Welsh Hill Speckled Face Sheep section

Defaid Bryniau Ceri Kerry Hill Sheep

Beirniad/Judge: Mr Stuart Lane, Kerry

Class SH29	Ram two years old and over
Class SH30	Shearling ram
Class SH31	Ram Lamb
Class SH32	Ewe, two years old and over
Class SH33	Shearling ewe
Class SH34	Ewe Lamb
Class SH35	Pen of one male and two females

Champion and Reserve Champion rosettes will be awarded for the Best Male and Best Female. Champion Female will represent the breed in **Special 87**. and Champion Male will represent the breed in **Special 87A**.

Overall Champion and Reserve Champion rosettes will be awarded.

Special 68 A Challenge Cup, presented by Mr William Lewis, Fferm Llanbadarn, Pennant, Llanon, to be won three times in succession or five times in all, will be awarded for the Best Exhibit in the Kerry Hill Sheep Section.

Defaid Torddu Badger Face Sheep – Torddu

Beirniad/Judge: Mr Matthew Brown, Llanpumpsaint

- Class SH36** Ram two years old and over
- Class SH37** Shearling ram
- Class SH38** Ram Lamb
- Class SH39** Ewe, two years old and over
- Class SH40** Shearling ewe
- Class SH41** Ewe Lamb
- Class SH42** Pen of one male and two females

Champion and Reserve Champion rosettes will be awarded for the Best Male and Best Female. Champion Female will represent the breed in **Special 87**. and Champion Male will represent the breed in **Special 87A**.

Overall Champion and Reserve Champion rosettes will be awarded.

- Special 69** A Challenge Cup, presented by Mr William Lewis, Fferm Llanbadarn, Pennant, Llanon, to be won three times in succession or five times in all, will be awarded for the Best Exhibit in the Badger Face – Torddu Sheep Section.

Defaid Torwen Badger Face Sheep – Torwen

Beirniad/Judge: Mr Matthew Brown, Llanpumpsaint

- Class SH43** Ram two years old and over
- Class SH44** Shearling ram
- Class SH45** Ram Lamb
- Class SH46** Ewe, two years old and over
- Class SH47** Shearling ewe
- Class SH48** Ewe Lamb
- Class SH49** Pen of one male and two females

Champion and Reserve Champion rosettes will be awarded for the Best Male and Best Female. Champion Female will represent the breed in **Special 87**. and Champion Male will represent the breed in **Special 87A**.

Overall Champion and Reserve Champion rosettes will be awarded.

- Special 70** A Challenge Cup, presented by Mr William Lewis, Fferm Llanbadarn, Pennant, Llanon, to be won three times in succession or five times in all, will be awarded for the Best Exhibit in the Badger Face – Torwen Sheep Section.

Defaid DUTCH SPOTTED Sheep

Beirniad/Judge: Mr Darren Hayward, Sennybridge

Class SH50	Ram two years old and over
Class SH51	Shearling ram
Class SH52	Ram Lamb
Class SH53	Ewe, two years old and over
Class SH54	Shearling ewe
Class SH55	Ewe Lamb
Class SH56	Pen of one male and two females

Champion and Reserve Champion rosettes will be awarded for the Best Male and Best Female. Champion Female will represent the breed in **Special 87**. and Champion Male will represent the breed in **Special 87A**.

Overall Champion and Reserve Champion rosettes will be awarded.

Special 71 A perpetual cup donated by Aberystwyth Show will be awarded to the best exhibit in the Dutch Spotted Sheep section

Defaid SUFFOLK Sheep

Beirniad/Judge: Mr Huw Thomas, Abergorlech

Class SH57	Ram two years old and over
Class SH58	Shearling ram
Class SH59	Ram Lamb
Class SH60	Ewe, two years old and over
Class SH61	Shearling ewe
Class SH62	Ewe Lamb
Class SH63	Pen of one male and two females

Champion and Reserve Champion rosettes will be awarded for the Best Male and Best Female. Champion Female will represent the breed in **Special 87**. and Champion Male will represent the breed in **Special 87A**.

Overall Champion and Reserve Champion rosettes will be awarded.

Special 72 A perpetual cup will be presented by Aberystwyth Show Committee to the Best Exhibit in the Suffolk Sheep Section.

Did you know?

We now accept online entries

Visit our website for more information

www.sioeaberystwythshow.co.uk

Defaid CHAROLLAIS Sheep

Beirniad/Judge: Mr Dyfan Evans, Llanwrda

- Class SH64 Ram two years old and over
- Class SH65 Shearling ram
- Class SH66 Ram Lamb
- Class SH67 Ewe, two years old and over
- Class SH68 Shearling ewe
- Class SH69 Ewe Lamb
- Class SH70 Pen of one male and two females

Champion and Reserve Champion rosettes will be awarded for the Best Male and Best Female. Champion Female will represent the breed in **Special 87**. and Champion Male will represent the breed in **Special 87A**.

Overall Champion and Reserve Champion rosettes will be awarded.

- Special 74** The Wynnstay Farmers Silver Challenge Cup, presented by Wynnstay Farmers and the British Charollais Sheep Society Championship rosette will be awarded for the Best Exhibit in the Charollais Sheep Section

Defaid TEXEL Sheep

Beirniad/Judge: Mr Michael James, Builth Wells

All exhibits shown in Texel sheep classes must have been clipped bare on or after 1st April 2026 and shown under British Texel Society rules. All exhibits to be entered or be eligible for entry in the Flock Book

- Class SH71 Ram two years old and over
- Class SH72 Shearling ram
- Class SH73 Ram Lamb
- Class SH74 Ewe, two years old and over
- Class SH75 Shearling ewe
- Class SH76 Ewe Lamb
- Class SH77 Pen of one male and two females

Champion and Reserve Champion rosettes will be awarded for the Best Male and Best Female. Champion Female will represent the breed in **Special 87**. and Champion Male will represent the breed in **Special 87A**.

Overall Champion and Reserve Champion rosettes will be awarded.

The British Texel Sheep Society offers their rosettes to the Champion and Reserve Champion.

- Special 75** The ICI Seeds Challenge Cup, will be presented for the Best Exhibit in the Texel Sheep Section.

Defaid BELTEX Sheep

Beirniad/Judge: Mr Andrew Bailie, Lanark

All sheep to be fully registered with the Beltex Sheep Society, classes are run under Society rules.



WELSH NATIONAL BELTEX CLUB SHOW

The Welsh Beltex Club will match the prize money from classes SH78 to SH84B. For any queries or further information regarding this, please contact the Welsh Club Secretary.

- Class SH78** Aged ram
Class SH79 Shearling ram
Class SH80 Ram Lamb born before 1/03/26
Class SH80A Ram Lamb born on or after 1/03/26
(WBC have the right to amalgamate classes SH80 and SH80A if not enough entries)
Class SH81 Ewe, having reared lambs in the current year
Class SH82 Shearling ewe
Class SH83 Ewe Lamb born before 1/03/26
Class SH83A Ewe Lamb born on or after 1/03/26
(WBC have the right to amalgamate classes SH3 and SH83A if not enough entries)
Class SH84 Pen of one male and two females
Class SH84A Best pair of lambs -any sex/age
Class SH84B Welsh Beltex Club Young Handlers aged 16years and under – if sufficient entries the class will be split into primary and secondary school at the discretion of the WBC.

Champion and Reserve Champion rosettes will be awarded for the Best Male and Best Female. Champion Female will represent the breed in **Special 87**. and Champion Male will represent the breed in **Special 87A**.

Overall Champion and Reserve Champion rosettes will be awarded.

The Beltex Sheep Society will present their championship Rosette for the Best Exhibit in the Beltex Sheep section.

- Special 75A** Perpetual Cup “Cwpan rhoddedig gan Mr Michael Owens, Glantre, Pontsiân” will be presented for the Best Exhibit in the Beltex Sheep Section
Special 75AB Perpetual Cup will be presented by the Aberystwyth Show Committee to the champion pair of lambs.
Special 76 Perpetual Cup will be presented by the Welsh Beltex Club to the Champion lamb.

Defaid ZWARTBLES Sheep

Beirniad/Judge: Miss Issy Hartley, Nelson, Lancashire

- Class SH85** Ram two years old and over
- Class SH86** Shearling ram
- Class SH87** Ram Lamb
- Class SH88** Ewe, two years old and over
- Class SH89** Shearling ewe
- Class SH90** Ewe Lamb
- Class SH91** Pen of one male and two females

Champion and Reserve Champion rosettes will be awarded for the Best Male and Best Female. Champion Female will represent the breed in **Special 87** and Champion Male will represent the breed in **Special 87A**.

Overall Champion and Reserve Champion rosettes will be awarded.

The Zwartbles Sheep Association will award a Champion rosette to the best exhibit in the Zwartbles Sheep section.

- Special 75B** A Perpetual Shield, presented by Susan Rowlands, Erglodd, will be awarded to the best exhibit in the Zwartbles Sheep Section

Defaid BLUE TEXEL Sheep

Beirniad/Judge: Miss Issy Hartley, Nelson, Lancashire

All sheep to be registered with the Blue Texel Sheep Society



CLWB BLUE TEXEL CYMRU NATIONAL SHOW

The Wales Blue Texel Club will match the prize money from classes SH92 to SH98. For any queries or further information regarding this, please contact the Welsh Club Secretary.

- Class SH92** Ram two years old and over
- Class SH93** Shearling ram
- Class SH94** Ram Lamb
- Class SH95** Ewe, two years old and over
- Class SH96** Shearling ewe
- Class SH97** Ewe Lamb
- Class SH98** Pen of one male and two females

Champion and Reserve Champion rosettes will be awarded for the Best Male and Best Female. Champion Female will represent the breed in **Special 87** and Champion Male will represent the breed in **Special 87A**.

Overall Champion and Reserve Champion rosettes will be awarded.

- Special 75C** A Cup, presented by Rob Rattray Butchers, Aberystwyth, will be awarded to the best exhibit in the Blue Texel section. This cup to be won three times in succession or five times in all before becoming the property of the exhibitor.

Defaid SOUTHDOWN Sheep

Beirniad/Judge: Mrs Buddug Jones-Williams, Bala

- Class SH99** Ram two years old and over
Class SH100 Shearling ram
Class SH101 Ram Lamb
Class SH102 Ewe, two years old and over
Class SH103 Shearling ewe
Class SH104 Ewe Lamb
Class SH105 Novice Class
Class SH106 Pen of one male and two females

Champion and Reserve Champion rosettes will be awarded for the Best Male and Best Female. Champion Female will represent the breed in **Special 87**. and Champion Male will represent the breed in **Special 87A**.

Overall Champion and Reserve Champion rosettes will be awarded.

- Special 77** A Cup presented by Greenlands Insurance Consultants for the Best Exhibit in the Southdown Sheep Section. This cup to be won three times before becoming the property of the exhibitor.
- Special 78** A cup presented by Greenlands Insurance Consultants for the Best Group of 3 animals. This cup to be won three times before becoming the property of the exhibitor.

Defaid POLL DORSET Sheep

Beirniad/Judge: Mr Eifion Hughes, Llangadog

All sheep over 12 months old must be shorn on or after 1st February.

- Class SH107** Ram two years old and over
Class SH108 Shearling ram
Class SH109 Ram Lamb
Class SH110 Ewe, two years old and over
Class SH111 Shearling ewe
Class SH112 Ewe Lamb
Class SH113 Untrimmed Ewe Lamb
Class SH114 Pen of one male and two females
Class SH115 Mixed sex pairs, any age

Champion and Reserve Champion rosettes will be awarded for the Best Male and Best Female. Champion Female will represent the breed in **Special 87**. and Champion Male will represent the breed in **Special 87A**.

Overall Champion and Reserve Champion rosettes will be awarded.

- Special 81** The Edryd Jenkins (Electrical Ltd) Trophy will be awarded to the Best Exhibit in the Poll Dorset Sheep Section. This Trophy to be won three times in all before becoming the property of the exhibitor.

Defaid RYELAND LLIW COLOURED RYELAND Sheep

Beirniad/Judge: Mr Tomos Evans, Llanddarog

- Class SH116** Ram two years old and over
- Class SH117** Shearling ram
- Class SH118** Ram Lamb
- Class SH119** Ewe, two years old and over
- Class SH120** Shearling ewe
- Class SH121** Ewe Lamb
- Class SH122** Pen of one male and two females

The show is a qualifying show for The Bob Webb Trophy and the Derwen Trophy.

The Coloured Ryeland Committee will present rosettes to the Champion and Reserve Champion.

Champion and Reserve Champion rosettes will be awarded for the Best Male and Best Female. Champion Female will represent the breed in **Special 87** and Champion Male will represent the breed in **Special 87A**.

Overall Champion and Reserve Champion rosettes will be awarded.

- Special 81A** A perpetual cup will be presented by the Aberystwyth Show Committee for the best exhibit in the Coloured Ryeland Sheep Section.
- Special 92** The Caz Bateman memorial trophy presented by the Coloured Ryeland Regional Committee for the best female Coloured Ryeland.

Defaid RYELAND RYELAND Sheep

Beirniad/Judge: Mr Richard Whitticase, Churchstoke

- Class SH123** Ram two years old and over
- Class SH124** Shearling ram
- Class SH125** Ram Lamb
- Class SH126** Ewe, two years old and over
- Class SH127** Shearling ewe
- Class SH128** Ewe Lamb
- Class SH129** Pen of one male and two females

This is a qualifying show for the Shepherd's Crook Ryeland shearling ewe of the year award. Points will be awarded from 1st to 3rd place to fully registered shearling ewes. Ear tag numbers will be recorded. A prize card will be awarded to the 1st placed shearling ewe."

The Ryeland Flock Book Society will award a sash to the Champion and Reserve Champion

The Ryeland Committee will present rosettes to the Champion and Reserve Champion.

Champion and Reserve Champion rosettes will be awarded for the Best Male and Best Female. Champion Female will represent the breed in **Special 87** and Champion Male will represent the breed in **Special 87A**.

Overall Champion and Reserve Champion rosettes will be awarded.

- Special 81D** A perpetual cup donated by Aberystwyth Show will be awarded to the best exhibit in the Ryeland Sheep section

Unrhyw Frîd Prin Arall Any Other Rare Breed

Beirniad/Judge: Dr Kate Hovers, Brecon

Sheep entered into these classes must be on the 2025–26 RBST Watch List in the Priority or At Risk categories, and do not have their own Breed Classes.

Eligible breeds are: Balwen, Border Leicester, Boreray, Devon & Cornwall Longwool, Leicester Longwool, North Ronaldsay, Whitefaced Woodland, , Castlemilk Moorit, Cotswold, Derbyshire Gritstone, Hill Radnor, Lincoln Longwool, Manx Loaghtan, Portland, Soay, Teeswater, Wensleydale, Devon Closewool, Dorset Down, Dorset Horn, Greyface Dartmoor, Llanwenog, Lonk, Norfolk Horn, Oxford Down and Whiteface Dartmoor.

Exhibitors must state the breed of each exhibit on the Entry Form.

- Class SH130** Ram two years old and over
- Class SH131** Shearling ram
- Class SH132** Ram Lamb
- Class SH133** Ewe, two years old and over
- Class SH134** Shearling ewe
- Class SH135** Ewe Lamb
- Class SH136** Pen of one male and two females

Champion and Reserve Champion rosettes will be awarded for the Best Male and Best Female. Champion Female will represent the breed in **Special 87**. and Champion Male will represent the breed in **Special 87A**.

Overall Champion and Reserve Champion rosettes will be awarded.

Special 81B A Challenge Cup, presented by Mr William Lewis, Fferm Llanbadarn, Pennant, Llanon, to be won three times in succession or five times in all, will be awarded for the Best Exhibit in the Any Other Rare Breed Section.

Unrhyw Frîd Mynydd Arall Any Other Hill Breed

Beirniad/Judge: Mr Dyfan Evans, Llanwrda

- Class SH137** Ram two years old and over
- Class SH138** Shearling ram
- Class SH139** Ram Lamb
- Class SH140** Ewe, two years old and over
- Class SH141** Shearling ewe
- Class SH142** Ewe Lamb
- Class SH143** Pen of one male and two females

Champion and Reserve Champion rosettes will be awarded for the Best Male and Best Female. Champion Female will represent the breed in **Special 87**. and Champion Male will represent the breed in **Special 87A**.

Overall Champion and Reserve Champion rosettes will be awarded.

Special 81C A Challenge Cup, presented by Mr William Lewis, Fferm Llanbadarn, Pennant, Llanon, to be won three times in succession or five times in all, will be awarded for the Best Exhibit in the Any Other Hill Sheep Section.

Unrhyw Fríd Iseldir Arall Any Other Lowland Breed

Beirniad/Judge: Mrs Sian Hayward, Sennybridge

- Class SH144** Ram two years old and over
Class SH145 Shearling ram
Class SH146 Ram Lamb
Class SH147 Ewe, two years old and over
Class SH148 Shearling ewe
Class SH149 Ewe Lamb
Class SH150 Pen of one male and two females

Champion and Reserve Champion rosettes will be awarded for the Best Male and Best Female. Champion Female will represent the breed in **Special 87**. and Champion Male will represent the breed in **Special 87A**.

Overall Champion and Reserve Champion rosettes will be awarded.

- Special 82** A Silver Tankard presented by Dewi Evans, Adpar, Newcastle Emlyn will be awarded to the Best Exhibit in the Any Other Lowland Breed Section to be won three times in all before becoming the property of the exhibitor.

Defaid SHETLAND Sheep

Beirniad/Judge: Mr Andrew Hardwood, Horsham

The following classes are held under the auspices of the Shetland Sheep Society Ltd and sheep must be presented and exhibited under their rules.

- Class SH151** Ram two years old and over
Class SH152 Shearling ram
Class SH153 Ram Lamb
Class SH154 Ewe, two years old and over
Class SH155 Shearling ewe
Class SH156 Ewe Lamb
Class SH157 Pen of one male and two females

The Shetland Sheep Society will present special rosettes for the top prize winners.

Champion and Reserve Champion rosettes will be awarded for the Best Male and Best Female. Champion Female will represent the breed in **Special 87**. and Champion Male will represent the breed in **Special 87A**.

Overall Champion and Reserve Champion rosettes will be awarded.

- Special 83** A perpetual cup will be presented by the Aberystwyth Show Committee for the best exhibit in the Shetland section.

Defaid CHEVIOT TIROEDD Y GOGLEDD NORTH COUNTRY CHEVIOT Sheep (Park type)

Beirniad/Judge: Miss Daisy Williams, Hereford

- Class SH158 Ram two years old and over
- Class SH159 Shearling ram
- Class SH160 Ram Lamb
- Class SH161 Ewe, two years old and over
- Class SH162 Shearling ewe
- Class SH163 Ewe Lamb
- Class SH164 Pen of one male and two females

Champion and Reserve Champion rosettes will be awarded for the Best Male and Best Female. Champion Female will represent the breed in **Special 87**. and Champion Male will represent the breed in **Special 87A**.

Overall Champion and Reserve Champion rosettes will be awarded.

- Special 84** A perpetual cup will be presented by the Aberystwyth Show Committee for the best exhibit in the North Country Cheviot section.

Defaid BADGERFACE TEXEL Sheep

Beirniad/Judge: Mr Michael James, Builth Wells

- Class SH165 Ram two years old and over
- Class SH166 Shearling ram
- Class SH167 Ram Lamb
- Class SH168 Ewe, two years old and over
- Class SH169 Shearling ewe
- Class SH170 Ewe Lamb
- Class SH171 Pen of one male and two females

Champion and Reserve Champion rosettes will be awarded for the Best Male and Best Female. Champion Female will represent the breed in **Special 87**. and Champion Male will represent the breed in **Special 87A**.

Overall Champion and Reserve Champion rosettes will be awarded.

- Special 90** A perpetual cup will be presented by the Aberystwyth Show Committee for the best exhibit in the Badgerface Texel section.

Defaid VALAIS BLACKNOSE Sheep

Beirniad/Judge: Mr David Roberts, Llanwrtyd Wells

- Class SH172** Ram two years old and over
Class SH173 Shearling ram
Class SH174 Ram Lamb
Class SH175 Ewe, two years old and over
Class SH176 Shearling ewe
Class SH177 Ewe Lamb
Class SH178 Pen of one male and two females

Champion and Reserve Champion rosettes will be awarded for the Best Male and Best Female. Champion Female will represent the breed in **Special 87**. and Champion Male will represent the breed in **Special 87A**.

Overall Champion and Reserve Champion rosettes will be awarded.

- Special 91** A perpetual cup will be presented by the Aberystwyth Show Committee for the best exhibit in the Valais Blacknose section.

Bugail Ifanc Young Handler

Beirniad/Judge: Mrs Buddug Jones-Williams, Bala

Prizes: 1st £10; 2nd £7; 3rd £5 (No entry fee)

- Class SH179** Child under 8 years of age on show day
Class SH180 Child aged between 8 and 12 years of age on show day
Class SH181 Child aged between 13 and 16 years of age on show day

Did you know?

We now accept online entries

Visit our website for more information

www.sioeaberystwythshow.co.uk

Pencampwyr Bridiau Defaid Sheep Interbreed Championships

Beirniad/Judge: Mr Andrew Kennedy, Ballymena

Special 86 Perpetual Challenge Cup presented by Rogers and Taylor, Bow Street for the Best Exhibit in the Hill Breeds Sections.

A £25 voucher will be kindly awarded by Gwion Evans, Mobile Sheep Dipping to the winner of Special 86.

Special 87 Perpetual Challenge Cup "Cwpan Coffa Mr Ieuan Jones, Tancastell" will be awarded to the Best Female.

Special 87A Perpetual Challenge Cup "Cwpan Rhoddedig gan Mrs N J Williams" will be awarded to the Best Male.

Special 88 Perpetual Challenge Cup presented by Brian Rees Esq., Red Roses will be awarded for the Best Exhibit in the Sheep Section

A £50 voucher will be kindly awarded by Rattray Butchers to the best exhibit in the Sheep section.

Special 89 JG Thomas Memorial Silver Challenge Cup for Best Group of Three in Show

One litre of Liquid-Thrive Sheep will be kindly awarded by Agri-Lloyd to the winner of Special 89. Local agent Rhian Rees Tel 07866 904413.

Adran Geifr Pigmi Pygmy Goat Section

The Show will operate under current DEFRA regulations.

**All exhibitors must provide completed Movement Licences (AML1)
for both ON and OFF movements**

Holding no. 55/269/8635

Entry Fees: Non-Members £4.00, Members £2.00

Prize money to be paid as cash on day of show: £10; £7; £5.

Beirniad/Judge: Mrs Norma Ackroyd, Blaenpennal

Classes are open to wethers and females

- | | |
|-------------------|--|
| Class G1 | PETS – 8 weeks to 1 year |
| Class G2 | PETS – exceeding 1 year but not exceeding 3 years |
| Class G3 | PETS – 4 years and over |
| Class G4 | Young handler under 16 years of age on show day |
| Special 93 | A perpetual cup will be presented by the Aberystwyth Show Committee for the best exhibit in the Pygmy Goat section. |

Adran Dofednod Poultry Section

THE 2026 SHOW WILL BE AN EGG SHOW THIS YEAR DUE TO CURRENT NATIONAL GATHERING RULES IN PLACE TO PREVENT THE SPREAD OF AVIAN FLU.

Poultry Club of Wales Regional Show. To be held under Poultry Club of Wales rules. Affiliated to the Poultry Club of Wales, Poultry Club of Great Britain and the National Federation of Poultry Clubs.

Free entry to the Show with five or more exhibits

JUDGING COMMENCES 10:00AM PROMPT

Entry fees: £1 per entry

Prizes: 1st £2, 2nd £1, 3rd 50p

Judge: Mr Keith Brain, Pontardulais

- Class PO111 6 Hen Eggs
- Class PO112 6 Bantam Eggs
- Class PO113 6 Duck Eggs
- Class PO114 6 Eggs – 2 of each colour
- Class PO115 3 Hen Eggs
- Class PO116 3 Bantam Eggs
- Class PO117 3 Duck Eggs
- Class PO118 3 Turkey Eggs
- Class PO119 3 Goose Eggs
- Class PO120 3 Eggs – 1 of each colour
- Class PO121 3 Eggs – 1 duck, 1 hen, 1 bantam
- Class PO122 2 Eggs – 1 large, 1 bantam
- Class PO123 1 White Large Hen Egg
- Class PO124 1 Brown Large Hen Egg
- Class PO125 1 AOC Large Hen Egg
- Class PO126 1 White Bantam Hen Egg
- Class PO127 1 Brown Bantam Hen Egg
- Class PO128 1 AOC Bantam Hen Egg
- Class PO129 1 Duck Egg
- Class PO130 1 Turkey Egg
- Class PO131 1 Goose Egg
- Class PO132 Hen Egg – contents only
- Class PO133 Bantam Egg – contents only
- Class PO134 Duck Egg – contents only
- Class PO135 Best Decorated Egg
- Class PO136 Best Painted Egg
- Class PO137 Best Juvenile Decorated or Painted Egg (under 16)

Rosette for Champion and Reserve Champion.

Campau Cŵn Campus Companion Canine Capers

A Fun Day out for Dogs and their Owners!

Dog Section Competitions and Judging start at 11am

All Classes are for both Purebred or Crossbred Dogs and Bitches unless otherwise stated

Entry £1 per Class taken on the Day in the Dog Ring

1st to 5th place Rosettes in all Classes

Our Judge Wendy Phillips (Carmarthen) is kindly judging classes 1-22

Behaviour, Conformation and Condition Classes

Class D01	Cute Puppies 4 months to 12 months old
Class D02	Youthful Youngsters 13 months to 2 years old
Class D03	Midlife Wonders 3 years to 6 years old
Class D04	Golden Oldies 7 years and over
Class D05	Best Condition under 15 inches
Class D06	Best Condition over 15 inches
Class D07	Best Short Coat
Class D08	Best Long Coat
Class D09	Best Purebred
Class D10	Best Crossbred
Class D11	Best Welsh Breed

Winners of Classes 1-11 will now be judged for Champion and Reserve Champion

Perpetual Silver Cup for the Champion of Classes 1-11

very kindly donated by S. Jones & Sons, Bethania

Champion & Reserve Champion Winners goody bags very kindly donated by Platinum UK

Champion & Reserve Champion Rosettes very kindly sponsored

by Celtic Travel (Llanidloes Ltd)

*Please note: All first prize winners and the Champion & Reserve Champions
CAN enter the Novelty classes as well!*

Novelty Classes

Class D12	Best Fancy Dress
Class D13	Prettiest Bitch
Class D14	Most Handsome Dog
Class D15	Dog with Waggiest Tail
Class D16	Child Handler 16 years and under
Class D17	Dog & Owner most alike
Class D18	Best Rescued – Rehomed
Class D19	First Timers – Dog & Handler's first show
Class D20	Best Trick – maximum of 3 tricks
Class D21	Best Dog from Out of Area (30 miles+ from the Show ground)
Class D22	Dog Judge would most like to take home

NB: Class D16 will be Judged on how well the handler controls, commands and praises their dog.

Winners of Classes 12-22 will now be judged for Champion and Reserve Champion

Perpetual Star Trophy for the Champion of Classes 12-22

very kindly donated by Kris & Les Fry – Trawscoed in memory of their beloved Star

Champion & Reserve Champion Rosettes very kindly sponsored by Celtic Travel (Llanidloes Ltd)

Champion & Reserve Champion Winners goody bags very kindly donated by Platinum UK

Special Cup for the Child Handler Class winner to keep
very kindly donated by Mid Wales Astronomy

Special Runners Up Rosettes for the Child Handler Class
very kindly donated by Waldburg German Shorthaired Pointers

We are very grateful for the kibble samples being donated by Platinum UK

We are extremely grateful for the generous Gold Package Sponsorship
of the Dog Show Section, 1st to 5th place rosettes and
both sets of Champion and Reserve Champion rosettes by

CELTIC TRAVEL (LLANIDLOES) LTD

01686 412231

www.celtic-travel.co.uk

info@celtic-travel.co.uk

The Fun Have A Go Activities will be open between 11am – 2pm

£1 a go with a rosette

Fastest Recall 1 – Plain

Fastest Recall 2 – With food / toys distraction

Obstacle Course 1 – Dogs under 1year old and small dogs – no jumps

Obstacle Course 2 – Medium and large dogs – with low jumps

We are extremely grateful for the generous Silver Package Sponsorship
of the Fun Have A Go Activities Section, Have A Go Special rosettes,
and the CCC Day Schedules by

DYFI PET CREMATIONS

07947 659154

www.dyfipetcremations.co.uk

dyfipetcremations@hotmail.com

All proceeds from this year's Companion Canine Capers will be donated to

Mind Aberystwyth

Charity No: 1107182

info@mindaberystwyth.org

www.mindaberystwyth.org

The MIND Centre provides a safe and relaxing place for adults experiencing or recovering from any level of mental illness. MIND provides support and advice, signposting in person, in groups, or online, covering Tenancy, Employment, and Wellbeing.

Activity groups: Arts and Crafts, Walking, Mum's Matter, and Live Life to the Full.

Carers, friends, family and supporters are all welcome.

The Charity Cheque very kindly supplied by Argraffwyr Lewis + Hughes Printers

LIMITED RINGSIDE CAR PARKING AVAILABLE AT THE DOG RING

For any Dog Section enquiries please email Kris at...
dogsection.abershow@gmail.com

Full show details can be found at the Show's website
www.sioeaberystwythshow.co.uk

A dog docked on or after the 28th March 2007 may not be entered for exhibition at this show.

Hen Beiriannau Vintage Section

**Trefnwyd gan / Organised by
North Ceredigion Vintage Club**

Please contact:
Mr Mitchell Tromans
mitch8997@gmail.com



Pabell Gynnyrch a Blodau Produce, Preserves and Floral Tent

RULES & REGULATIONS

1. Please note entries this year will be taken on show day by the relevant section stewards.
2. All exhibits must be the bona fide produce of the exhibitor. No shop bought items allowed.
3. The marquee will be open for staging exhibits at 8.45am, and this must be completed by 10.15am. Judging will commence at 10.45am and no exhibit may be removed before 4.15pm.
4. Presentation of Cups and trophies will take place at 3.45pm in the Produce Tent.
5. Prize winners may collect prize money from the Produce Tent Stewards after the presentation of the cups on Show Day. Prize money not collected will be forfeited.
6. The Marquee will be closed to the public after 4.15pm Exhibits should be removed between 4.15pm and 4.45pm, after which any item left will be disposed of by the Stewards.
7. The Committee do not hold themselves responsible for the loss or damage to any exhibit, but all possible care will be taken.
8. No more than two entries from each competitor will be accepted in any Class in any Section.
9. The Committee will appoint judges, whose decision will be final.
10. Any complaints to be lodged with the Secretary along with a deposit of £20 before 2.30pm on the day of the Show.
11. All schools are responsible for collection of exhibits at end of the show. Failure to do so will result in exhibits being disposed.
12. The presentation of exhibits will be taken into consideration.
13. Plain labels only to be used.
14. All articles in the Handicraft Section must be unlaundered.
15. All cakes and breads will be cut.
16. For Special Awards, 3 points will be allocated for a first prize, 2 points for a second prize and 1 point for third prize. In the event of a joint placing, each competitor will be allocated the full points. In the event of joint marks the competitor with the most first prizes will be deemed the winner.
17. Any exhibits with trade names on containers may be disqualified.
18. Admission to show is Adults £10 in advance £12 on the day.
All competitors must pay admission when entering the field in the morning.
19. No entry fees will be charged.
20. All cookery entries will be covered after judging, including children's section.
21. **PLEASE NOTE – Exhibitors must use Entrance B (roundabout entrance)**
Exhibitors will be unable to exit the field after staging in the morning, until after 10.00am.

**PABELL GYNNYRCH A BLODAU
PRODUCE, PRESERVES AND FLORAL TENT**

BEIRNIAID / JUDGES

Coginio / Bread & Confectionery

Mrs Jayne Jones, Bont Newydd

Cyffeithiau / Preserves

Brenda Jones, Bow Street

Mêl / Honey

Caryl Lewis, Goginan

Gwin / Wine

Mr Matthew Howells, Saron

Crefftau Gwledig / Rural Crafts

Mr Dewi Rattray, Llanilar

Gwaith Llaw / Handicrafts

Mrs Enid Hughes, Pontrhydfendigaid

Adran y Plant / Children's Section

Mrs Ellen Rees, Llangwryfon

Mrs Ann Lloyd, Llangwryfon

Gosod Blodau / Floral Art

Mrs Beti Wyn Davies, Rhydyfelin

Celf / Art

Dr Emily Lloyd-Williams, Llanfarian

Ffotograffiaeth / Photography

Dr Emily Lloyd-Williams, Llanfarian

Llysiau a Blodau / Vegetables and Household Plants

Mr Roger Clothier, Llanilar

CYFFEITHIAU A CHYNNYRCH / PRESERVES & PRODUCE

Prizes: 1st - £3; 2nd - £2; 3rd - £1 - No entry fee

Coginio / Cookery

All cakes and bread will be cut

Dosbarth / Class

1. Lemon drizzle Loaf
2. A cake made using fruit or vegetable
3. A Chocolate Sponge
4. Four Brownies or Blondies
5. Four Welsh Cakes
6. Fruit Tart
7. Bara Brith
8. Four Fruit Scones
9. Homemade Loaf (500g / 1lb Dough)
10. Four Sausage Rolls containing cheese
11. Savoury Quiche
12. A Fruit Flan
13. Four Biscuits
14. A display of decorated Cup Cakes
15. A Chocolate Swiss Roll

Special 1

A silver cup to be won outright and a rosette will be awarded to the Best Exhibit.

A Rosette will be awarded to the exhibitor gaining the highest number of points in classes 1-15.

Cyffeithiau / Preserves

16. Jar of Marmalade
17. Jar of Stone Fruit Jam
18. Jar of Soft Fruit Jam
19. Jar of Lemon Curd
20. Jar of Fruit Jelly

21. A Salad Dressing
22. Jar of Mint Jelly
23. Jar of Unusual Preserve
24. Jar of Fruit Chutney
25. Jar of Vegetable Chutney
26. Jar of Pickled Onions
27. Jar of Piccelilli
28. 3 Preserves presented as a gift

Special 2

A silver cup to be won outright and a rosette will be awarded to the Best Exhibit.

A Rosette will be awarded to the exhibitor gaining the highest number of points in classes 16-28.

Mèl / Honey

29. 2 Jars of Light Honey
30. 2 Jars of Medium Honey
31. 2 Jars of Dark Honey
32. 2 Jars of Granulated Honey
33. A Pair of Beeswax Candles

Special 3

A silver cup to be won outright and a rosette will be awarded to the Best Exhibit.

A Rosette will be awarded to the exhibitor gaining the highest number of points in classes 29-33.

Gwinoedd / Wines

34. Bottle of Sweet Red Wine
35. Bottle Sweet White Wine
36. Bottle Dry Red Wine
37. Bottle Dry White Wine
38. Bottle of any alcoholic beverage made using a kit
39. Bottle of Named Flower Wine
40. Bottle of Beer
41. Bottle of Fruit Cordial
42. Bottle of Fruit Gin or Fruit Vodka
43. Bottle of Liqueur

Special 4

A silver cup to be won outright and a rosette will be awarded to the Best Exhibit.

A Rosette will be awarded to the exhibitor gaining the highest number of points in classes 34-43.

Crefftau Gwledig / Rural Crafts

44. A Bird Box any medium
45. An item using driftwood
46. An item using a pebble or pebbles
47. An item using Leather
48. A Thumbstick
49. An item in Pottery
50. An item in Metalwork
51. A Shepherds Crook
52. An item using an old pallet

Special 5

A silver cup to be won outright and a rosette will be awarded to the Best Exhibit.

A Rosette will be awarded to the exhibitor gaining the highest number of points in classes 44-52.

Gwaith Llaw / Handicrafts

53. A Star any medium
54. A Crocheted item
55. A Cushion any medium
56. A Door Stop or Draft Excluder
57. An article in Gold
58. A Flower any medium
59. A Birthday Card with Envelope or Box
60. An item in Paper Mache
61. An item in Patch Work
62. A Bag in any medium

Special 6

A silver cup to be won outright and a rosette will be awarded to the Best Exhibit.

A Rosette will be awarded to the exhibitor gaining the highest number of points in classes 53-62.

Adran Gelf / Art Section

- 63. An Animal/s or a Bird/s
- 64. A Landscape
- 65. A Building or Buildings
- 66. A Pencil o'r Charcoal Drawing

Special 7

A silver cup to be won outright and a rosette will be awarded to the Best Exhibit.

A Rosette will be awarded to the exhibitor gaining the highest number of points in classes 63-66.



Ffotograffiaeth / Photography

Both colour and Black and White photographs are permitted, made with either digital or film cameras. A maximum of two entries only per person in any class will be permitted. **All photographs to be mounted on black card no larger than A4 or will not be judged.** Selective printing or digital manipulation to adjust print colour/ quality or cropping, to improve photographs is encouraged.

Disgyblion Cynradd / Primary school pupils

Taleb yn rhoddedig gan 'Siop Ffoto'
Voucher donated by 'Ffoto Shop'

- 67. Coeden / A Tree
- 68. Fy hoff fwyd / My favourite food
- 69. Anifail neu bryfyn / An animal or insect

Special 8

A silver cup to be won outright and a rosette will be awarded to the Best Exhibit. Siop Ffoto Shop Voucher to the best exhibit.

A Rosette will be awarded to the exhibitor gaining the highest number of points in classes 67-69.

Disgyblion Uwchradd / Secondary school students

Taleb yn rhoddedig gan 'Siop Ffoto'

Voucher donated by 'Ffoto Shop'

- 70. Golygfa Glan y Môr / A Seaside View
- 71. Adeilad neu adeiladau / A Building or buildings
- 72. Aderyn neu adar / A Bird or birds

Special 9

A silver cup to be won outright and a rosette will be awarded to the Best Exhibit. Siop Ffoto Shop Voucher to the best exhibit.

A Rosette will be awarded to the exhibitor gaining the highest number of points in classes 70 -72.

Oedolion / Adults

- 73. Machlud / A Sunset
- 74. Anifail neu anifeiliaid fferm / Farm Animal or animals
- 75. Casgliad o bedwar llun penawd "Pontydd" / A set of four photos titled, "Bridges"

Special 10

A silver cup to be won outright and a rosette will be awarded to the Best Exhibit.

A Rosette will be awarded to the exhibitor gaining the highest number of points in classes 73 -75.

ADRAN Y PLANT / CHILDREN'S SECTION

MEITHRIN a DERBYN / NURSERY and RECEPTION

- 76. Enfys unrhyw gyfrwng / Rainbow any medium (dim mwy na A4 / No bigger than A4)
- 77. Carreg gron wedi'i pheintio / A painted pebble
- 78. Cacenn "Rice Crispy" wedi'i addurno / A decorated "Rice Crispy" Cake
- 79. Dafad unrhyw gyfrwng / Sheep any medium

Special 11

A silver cup to be won outright and a rosette will be awarded to the Best Exhibit.

A Rosette will be awarded to the exhibitor gaining the highest number of points in classes 76 -79.

BLWYDDYN 1 a 2 / YEARS 1 & 2

80. Anifail wedi'i beintio / Painting of an animal
(Dim mwy na A4 / Maximum size A4)
81. Wellington wedi'i addurno/ A decorated Wellington boot
82. Bisged wedi'i addurno / A decorated biscuit
83. Eitem 2D neu 3D yn cyfleu y thema "Breuddwydion" /
2D or 3D item portraying – "Dreams"

Special 12

A silver cup to be won outright and a rosette will be awarded to the Best Exhibit.

A Rosette will be awarded to the exhibitor gaining the highest number of points in classes 80 - 83.

BLWYDDYN 3 a 4 / Years 3 & 4

84. Plât papur wedi'i addurno / A decorated paper plate
85. Pedair Brownie / Four Brownies
86. Buwch unrhyw gyfrwng / A Cow any medium
87. Eitem 2D neu 3D yn cyfleu y thema "Breuddwydion" /
2D or 3D item portraying – "Dreams"

Special 13

A silver cup to be won outright and a rosette will be awarded to the Best Exhibit.

A Rosette will be awarded to the exhibitor gaining the highest number of points in classes 84 - 87.

BLWYDDYN 5 a 6 / YEARS 5 & 6

88. Mochyn unrhyw gyfrwng / A Pig any medium
89. Pedair sleisen o "tray bake" / Four slices from a tray bake
90. Trefniant Blodau mewn tebot / A Flower arrangement
in a Teapot
91. Eitem 2D neu 3D yn cyfleu y thema "Breuddwydion" /
2D or 3D item portraying – "Dreams"

Special 14

A silver cup to be won outright and a rosette will be awarded to the Best Exhibit.

A Rosette will be awarded to the exhibitor gaining the highest number of points in classes 88 - 91.

PLANT 11 - 18 OED / CHILDREN 11 - 18 YEARS OLD

92. Unrhyw eitem wedi'i gwneud â llaw e.e Gwaith pren, metel, gwniadwaith / Any handmade item i.e woodwork, metalwork, needlework
93. Cerdyn Post / A Postcard
94. Pedair cacen cwpan addurnedig / Four decorated cup cakes
95. Ceffyl unrhyw gyfrwng / A Horse any medium

Special 15

A silver cup to be won outright and a rosette will be awarded to the Best Exhibit.

A Rosette will be awarded to the exhibitor gaining the highest number of points in classes 92 - 95.

Special 16

A Perpetual Plaque will be awarded to the School Gaining the highest no of points in classes 76 – 91

CELFYDDYD TREFNU BLODAU / FLORAL ART SECTION

Floral Art Prize Money:- 1st - £5; 2nd - £3; 3rd - £2 - No Entry Fee

96. **Wild and Woolly** (An exhibit to depict the theme)
Max space allowed 76cm wide x 60 cm deep.
Height optional.
97. **Centre Stage** (A table centre arrangement - foam free/no floral foam)
Max space allowed 50 cm wide x 50cm deep.
Height optional.
98. **Scarlet Splendour** (A modern exhibit to depict the theme)
Space allowed 50cm wide x 50 cm deep.
Height optional.

99. **Let's go Green** (An exhibit predominantly of foliage)
Space allowed 76cm wide x 60 cm deep.
Height optional
100. **A Golden touch**
A petite exhibit.
Space allowed 25cm wide x 25cm deep.
Height not to exceed 37cm
101. Novice Competition - **What's Cooking** (an exhibit incorporating a kitchen utensil) not to have won a first prize previously
Maximum Space Allowed 50cm wide x 50cm deep - height optional
102. **Aberystwyth Floral Society members only**
All things bright and beautiful (a parallel/continental arrangement to depict the theme)
Space allowed 76cm wide x 60cm deep. Height optional.
103. **Merched Y Wawr / WI competition**
Round and Round (an exhibit to depict the theme)
Space allowed 76cm wide x 60 cm deep. Height optional.

SPECIAL NOTES

This section to be judged in accordance with the NAFAS competition manual 3rd edition 2016.

EXHIBITS MAY BE STAGED IN THE TENT OR ALREADY ASSEMBLED

Height are Unlimited in all sections unless otherwise stated, measurements are approximate measurements.

Judges decision is final

Special 17

A Silver Cup will be awarded to the best exhibit in the Floral Art Section + Best Exhibit Rosette

Special 18

A Perpetual Silver Challenge Rose Bowl, presented by Mrs Rachel Rowlands, Brynlllys, Borth will be awarded to the competitor gaining the highest number of points in the Floral Art Section and a rosette for the highest number of points.

Special 20

The Jo Richards Perpetual Challenge Trophy, presented by Mr Donald Morgan, Blodau'r Bedol, Llangwryfon will be awarded to the Best Exhibit in Class 102 (Open to members of Aberystwyth Floral Society only)

Special 21

The John James, Perpetual Silver Cup presented by the Cambrian Floral Society in memory John James will be awarded to the Best Exhibit in novice class 101.

BLODAU / LLYSIAU VEGETABLE / HOUSEHOLD PLANTS

104. A Pot Plant in an unusual container
105. Pot of Foliage
106. An outside planter
107. Pot Succulent
108. One Rose, Judged for perfume only
109. One cut Rose, specimen
110. Four Pansies
111. Vase of Garden Flowers
112. Best Planted Window Box
113. An Animal or Bird made out of Fruit or Vegetables
114. An unusual shaped Vegetable
115. Two Lettuces with Roots "pot grown accepted"
116. Any variety of brassica with roots "pot grown accepted"
117. Two sticks of Rhubarb
118. Four Kidney Potatoes
119. Four Round Potatoes
120. Six Gooseberries
121. A collection of Herbs
122. A selection of soft fruits

Special 22

A silver cup to be won outright and a rosette will be awarded to the Best Exhibit.

A Rosette will be awarded to the exhibitor gaining the highest number of points in classes 104 - 122.

Special 14

A Perpetual Silver Challenge Cup presented by Mrs May Royle, Glan Ceulan, Penrhyncoch will be awarded to the exhibitor with the highest number of points in the Produce Tent.

Stiwardiaid Adran / Section Stewards

Coginio / Cookery

Mrs Marian Davies, Rhydyfelin

Cyffeithiau / Preserves

Mrs Lowri Jones, Capel Bangor

Mêl / Honey

Mrs Delyth Morgan, Llandre

Gwin / Wine

Ms Llinos Jones, Aberystwyth

Crefftau Gwledig / Rural Crafts

Elin Mabbutt, Aberystwyth

Gwaith Llaw / Handicrafts

Mrs Tegwen Morris, Aberystwyth

Adran y Plant / Children's Section

Ms Andrea Jones, Capel Bangor

Mrs Gwenda Moseley-Jones, Bow Street

Gosod Blodau / Floral Art

Miss Luned Jones Capel Bangor

Celf / Art

Ms Samantha Gill, Comins Coch

Ffotograffiaeth / Photography

Ms Samantha Gill, Comins Coch

Llysiau a Blodau / Vegetable and Household Plants

Ms Ann Louise Davies, Capel Bangor

Stewards

Ms Courtney Chandler, Penparcau

Miss Ania Evans, Capel Bangor

Miss Ffion George, Llanfihangel y
Creuddyn

Mrs Phyllis Harries, Llanddeiniol.

Miss Lucy Jones, Carmarthen

Miss Gwawr Morgan, Llandre

Mr Aled Morris, Aberystwyth

Mr Richard Morris, Aberystwyth

Dr. Manning, Aberystwyth

Miss Nannon Jones, Capel Bangor

Mr Tomos Jones, Capel Bangor

IMPORTANT

This year 2026 all produce entries will be taken on the day.

PWYSIG

Eleni yn 2026 byddwch yn cofrestru i gystadlu yn yr adran gynnyrch ar y dydd.

Ymholiadau:
Enquiries: **abershow@hotmail.com**

Handicrafts Classes 2027

A wall hanging any medium

A knitted item

A table runner

Bunting

An article in pink

An animal any medium

Papercraft any medium

Best gift wrapped item

An item in blackwork

A quilt any medium

NOTES

A

Sioe Sir Ceredigion
BERYSTWYTH
Ceredigion County Show

**Dros Dro • RocCana •
Radnor Twurzels • DJ**

£10

13.6.2026

**19:00 TAN HWYR
'TIL LATE**

**CAEAU GELLI ANGHARAD,
ABERYSTWYTH, SY23 3HP**

BAR, BWYD AC ADLONIAENT YN Y MARCÎ

**BAR, FOOD AND ENTERTAINMENT IN
THE MARQUEE**

TOCYNNAU | TICKETS

WWW.SIOEABERYSTWYTHSHOW.CO.UK



CB ENVIRONMENTAL GROUP

Don't just waste it!

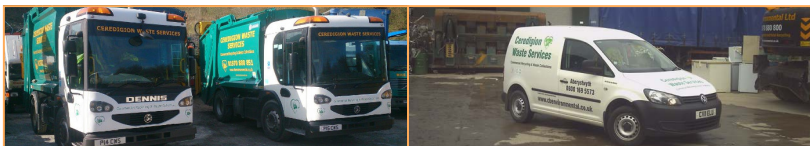
Clarach Bay Services Ltd and CB Environmental Ltd

Working together to provide a 'one stop' option for non-hazardous and hazardous waste management services in the Mid-Wales region.

CEREDIGION WASTE SERVICES

Tel: 0800 1695573 / 01970 880851

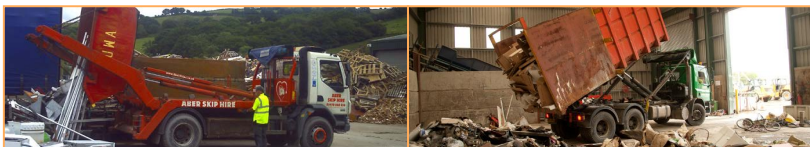
For commercial and domestic waste and recycling collections we offer a flexible and comprehensive range of fully licensed waste services.



ABER SKIP HIRE

Tel: 01970 880838

For skip hire and grab wagons we offer a fully licensed and professional service including 'Wait and Load' with Public Highways permit and Duty of Care support.



C B ENVIRONMENTAL LTD

Tel: 01970 880800
Rheidol Recycling Park 01970 624347

For waste management services; waste disposal; recycling including scrap metals and cars, for a range of primary and recycled aggregates and compost we offer fully licensed services and products at competitive prices.



General Enquiries

Tel: 01970 880800 Fax: 01970 880838 e-mail: enquiries@cbenvironmental.co.uk

Cwm Nant Yard, Capel Bangor, Aberystwyth, Ceredigion SY23 3LL

www.cbenvironmental.co.uk