



@HeritageTransportShow

South East
Bus Festival

2026

Saturday 11th April



TRADE & CATERING OPPORTUNITIES



tradestands@kentshowground.co.uk

01622 630975

www.kcas.org.uk



Supporting
farming
since 1923

WHO ARE WE?

The Kent County Agricultural Society is a registered charity whose aim is to support the county's agricultural community and its practices, while educating the public on the importance of British farming and connecting children and young people with the countryside and rural crafts. The Society has a long history of running events, with the 93rd Kent County Show being held in 2024. The Society also holds a number of annual charitable events including the Heritage Transport Show, Kent Farming Conference, Farm Expo and Living Land.

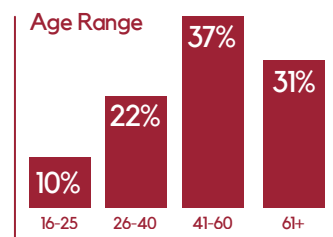


WHY TRADE?

The Heritage Transport Show is a stand out event for vintage and heritage vehicles. The Show aims to raise funds to support the Heritage Section at the Kent County Show. Working in partnership with the South East Bus Festival, the Show offers displays of classic cars, commercial and military vehicles, motorcycles, buses, steam, tractors and classic cars of the future. The Show also hosts a farmers' market and raffle for visitors.

Since its inception in 2009, the Heritage Transport Show has grown to include over 5000 visitors and 700 display vehicles. The Heritage Transport Show is a specialist event and so attracts visitors with a keen interest in vintage vehicles, with many owning such vehicles themselves. Sponsorship of the Heritage Transport Show will offer exposure to an audience with a specific interest transport and vintage vehicles.

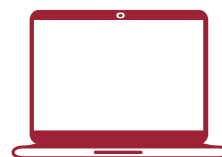
VISITOR PROFILE



OUR DIGITAL PRESENCE



1.7K
Facebook
followers



160K
Website views

WE'RE HERE TO HELP

If you're new to exhibiting at the Heritage Transport Show or are unsure about which option or space might be best for your business, please get in touch. We are happy to answer any questions you have and guide you through the application process. Please try not to leave any concerns until Show day as we will be less able to resolve any issues you have with your location etc. For common queries, you can refer to the regulations in the back of this brochure.



APPLICATION PROCESS

All applications must be submitted via Showing Scene by 10th March 2026. To make your booking, visit Showing Scene and search for Heritage Transport Show 2026 or click the Trade link on our website.

The Office must have received completed application forms and full payment by 10th March 2026 to secure a space within the Show and to guarantee inclusion in printed material.

If you have any issues when applying, please contact us using the details below.

CANCELLATION POLICY

If you wish to cancel your trade booking for any reason, you must inform us as soon as possible. Cancellations prior to **31st January 2026** will receive a **50% refund**. Any cancellations after this date will not be refunded.

CONTACT US TODAY

Please contact our Trade Stand Coordinator, Paige, to discuss any questions or further requirements you may have.

Email: tradestands@kentshowground.co.uk

Tel: 01622 630975

Visit: www.kcas.org.uk

Prices starting
from just
£50

TRADE STAND PRICES

When calculating your stand costs, please ensure that you have sufficient space to allow for all items which are needed, **including ground plates, tent guy ropes. No equipment is allowed outside the boundary of your trade stand.**

No vehicles will be permitted to park behind the Tradestands unless agreed by the society, designated car parking will be in place for traders.

All pitch sizes include 2 allocated tickets for staff. Any further tickets required will need to be purchased online or on the gate.

Prices shown below don't include VAT.

Outdoor Space

- 3m frontage x 3m deep- £50
- 3m frontage x 6m deep- £55
- 3m frontage x 9m deep- £60
- 6m frontage x 3m deep- £60
- 6m frontage x 6m deep- £65
- 6m frontage x 9m deep- £70
- 9m frontage x 3m deep- £75
- 9m frontage x 6m deep- £80

Electricity hook up single 13 amp £85

Indoor Space

- 4m frontage x 3m deep- £70
- 6m frontage x 3m deep - £80
- 10m frontage x 3m deep- £100

Electricity hook up single 13 amp £75

Catering Pitch

- Small - £245
- Medium - £370
- Large - £520

Electricity hook up direct cee form
16 amp £120



STAND PREPARATION, PLACING & REMOVAL

Setting up

Exhibitors may start building their stand from Friday 10th April. The Showground is open from 9:00am to 4:00pm. Security will be on site from Friday 10th April. Entrance 1 (Main Gate) off of the A249 will remain open between these hours to give access.

All sites allotted to exhibitors will be clearly marked by the Society. Marking pegs must not be removed, disturbed or obstructed.

Exhibitors with large mobile units should arrange to have these in position by 4:00pm on Friday 10th April. This is especially important when it is necessary to encroach on an adjoining stand space to manoeuvre the unit into position.

No fork lift will be available to help unload goods before, during or after the Show.

All sites must be fully stocked and ready for business by 10:00am on the day of the Show. After this time there may be no staff available to help with any problems.

During the Show

Once the Show has commenced, no trader will be able to move their trade space.

There will be a trade car park close to Entrance 4 for trade stand holders. Access to this car park is free and you must request the number of parking passes you require upon application. Any additional exhibitors requiring parking will have to park in the general public parks which are free, but spaces near to the entrance can't be guaranteed.

All trade stands **MUST** be open and manned from 10:00am to 4:00pm on the day of the show. Any trade stands that pack up or leave their allotted space prior to show closing may be refused space at any future events held by the Kent County Agricultural Society.

NO VEHICLE MOVEMENT will be permitted during event opening hours except for emergency vehicles and those forming part of a display pre-arranged by the Society.

Setting down

No part of a stand may be dismantled before 4:00pm on show day. Vehicles for the removal of stands will not be allowed to enter the Showground until 4:00pm. Any stands dismantling before this time will not be invited back to future events.

Stands and exhibits must be cleared from the Showground by 12pm on Sunday the 12th of April 2026. Any stand, exhibit or part remaining on the Showground after this will be removed and disposed of by the Society. Any cost involved will be charged to the exhibitor.

TRADE STAND REGULATIONS

Please read through these trade stand rules and regulations thoroughly before completing your application form. By submitting your application you are agreeing to abide by these terms and conditions. Any trade stand that is seen to not be following these regulations could be asked to leave the Show without reimbursement and not be invited back to future events. If you have questions about any of the following please get in touch with our Trade Stand Coordinator, Paige, on 01622 630975 or email tradestands@kentshowground.co.uk.

USE OF TRADE SPACE

The sale of jokes and tricks, including any item containing or capable of discharging any noxious smell, noise, coloured spray, foam or other product that could be a nuisance or annoyance to any other person in the Showground is not permitted. Any misrepresentation of goods sold on application form to gain admittance will result in the trade stand and their goods removed from the Showground **without** compensation.

Political activity

Applications for any Political Party or Organisation cannot be accepted, nor any political activity on the Showground tolerated.

'Cheap jack' traders and auctions

Vendors of 'cheap jack' articles or itinerant vendors who may have gained admission to the grounds will be evicted immediately. **The selling of goods by action, shouting, or behaviour that causes a nuisance to visitors or other exhibitors is strictly forbidden.** Staff and trade stand stewards will be patrolling the site regularly and will have the power to remove offending exhibitors and their goods from the Showground should they be caught breaking this rule.

ALLOCATION OF SITES

Please check the trade stand prices and spaces carefully before submitting your application. We will try our best to put you in your preferred location but please note this isn't always possible.

- The allocation of sites and positioning of trade stand space will be entirely at the discretion of the Society, although every endeavour will be made to meet any request made by an exhibitor about the position of their stand.
- No refund will be given if an exhibitor is not satisfied with the location of their stand upon arrival to the Show. **Under no circumstances will abuse towards our staff or volunteers be tolerated.** Anyone who does so may be asked to leave the premises and not invited to return to any further events.
- For returning trade, we will try to accommodate the same space as you have held in previous years if requested. However, we cannot guarantee this will be available and the show layout is subject to changes made by the Society.
- Boundaries of sites will be marked at the front and at the back of the stand. Under no circumstances will exhibitors be allowed to occupy a larger space than has been allocated to them. If an exhibitor uses any part of the Showground outside the boundary, or goes over the front line, they will have to pay for any additional space used as the Society sees fit.
- **You must provide your own marquee if required.** There is no shedding available, and we are unable to provide any marquees.

HEALTH & SAFETY AND LEGAL REQUIREMENTS

Health and safety

Anyone exhibiting at the Heritage Transport Show should be aware of their duties under the Health & Safety at Work Act 1974, and are required at the time of booking, to provide a completed risk assessment addressing all the risks associated with attending the Show.

Electricity

All electrical equipment should be PAT tested before being used at the Show and we advise you seek surge protection.

Insurance

All exhibitors must carry Public Liability Insurance with the minimum limit of indemnity required for your business. This must be submitted along with your application, or prior to the Show. Exhibitors should also hold the relevant Employers Liability Insurance where required by statute.

Under the Consumer Protection Act 1998, all exhibitors supplying goods or services should hold product liability insurance under an annual policy.

Loss, theft or damage

The Society will not be held responsible for the loss, theft or damage of any vehicles, goods or marquees etc. on site before, during and after the event. All exhibitors are fully responsible for the security of their stand and stock at all times before, during and after.

Food and drink regulations

You will need a personal license to sell alcohol at the Show. If you plan to sell alcohol, you will need to fill out an alcohol declaration form with your application and send along with a copy of your personal license.

If you are selling food or soft drinks at the Show, you need to send your food handling certificate, food safety management documentation, gas certificate (if applicable) and electrical certificate along with your application.

Fire safety precautions

Each exhibitor must conform to precautions against fire and provide a fire risk assessment for any space allocated to them and in any stand, exhibit, tent, marquee or other temporary or moveable structure erected or installed within their allotted space. All stands using bottled gas are required to have a Gas Safety Check. It is suggested the gas connection to have crimps fitted rather than jubilee clips.

All exhibitors who produce heat or are considered high fire risk are required to supply a suitable fire extinguisher on their stand. A CFOA form, which can be obtained from the Show Office, must be completed.

GENERAL SHOW REGULATIONS

Generators

For health and safety reasons, the use of generators is strictly forbidden.

All electricity required must be ordered via the application form. Any generators found to be used during the Show will result in an on-the-spot fine of £100 and may result in future disqualification.

Goods ordered at the Show

All orders taken at the Show must be dispatched promptly. Where the delivery time is more than three months after the closing date of the Show, customers must be made aware of this at the time of ordering. Failure to abide by this regulation may result in stands not being invited back in future years.

Litter

Exhibitors must have their stands and immediate adjoining avenues cleaned up at the close of the Show each day. Any litter should be placed in the bins provided ready for collection by the Society's contractors. Anything for recycling should be placed on the road edge for collection each evening.

Dogs

Dogs must be kept on a lead at all times. Please ensure you clear up after your dog.

SIGNS AND ADVERTISING

Signs

- Trade signs must not be erected in a way that overshadows other stands.
- Where possible, flagpoles should be freestanding with a base plate and secured with marquee pegs. Please let the Show Office know if you wish to put flagpoles into the ground, this is due to an underground electric network. Any flagpoles must fit within your allocated space.
- Flags are not permitted around the display rings.

Advertisements

Advertising is available in the Show Guide produced by the South East Bus Festival. For more information on Show Guide advertising, please contact:

It is strictly forbidden for any exhibitor to:

- Affix any placard or advertisement to any part of the Showground unless prior written permission has been obtained.
- Distribute leaflets or display advertisements on the Society's property, except on their own stand.
- Roam into the avenue and other stands, or around the Showground to encourage visitors onto the stand, to offer hand-outs, leaflets, or make charitable donations etc.
- Place leaflets/handbills on vehicles in car parks.

Press Office

The Press Office welcomes press packs and media information to be distributed to our media network. If you plan to hold a media event, please email the relevant information to our Marketing Team Leader, Emma, at emmas@kcas.org.uk or call 01622 633058, including details of stand name, timings, potential invitees and general details of the event.

Social Media

Please feel free to tag us in your social media activity and where possible we can help promote you. We post regular updates leading up to the Show via our social media platforms. **Tag @HeritageTransportShow on Facebook**

NOISE

Exhibitors must not use any public address equipment (PA system), call attention to their goods, or otherwise cause noise that disrupts visitors and traders. **Staff and Trade Stand Stewards are authorised by the Show Manager to stop any activity which is deemed to be offensive.**

Two-way radio equipment

Exhibitors wishing to use two-way radio equipment must have the appropriate license. The Society requests that you inform us of the frequencies which are to be used at least one month before the Show.

Radio microphones

Exhibitors, demonstrators or display acts wishing to use radio microphones during the Show are required to inform the Society of the frequencies that they are intending to use, at least one month prior to the Show.

In regard to two-way radios and radio microphones, the Society reserves the right to limit the number of frequencies and power, should they interfere with the Society's own equipment or that of the main contractors. Any organisation using the same frequency will be asked to change, or cease using the equipment.

SERVICES

Electricity

If you require electricity on your stand, you will need to book this at the same time as completing your trade application on Showing Scene.

Water

Standpipes are available at many points on the Showground. Water connections may be made to individual stands in certain areas only. Please complete the water form along with your application (please note we cannot guarantee that water connections will be available for all stands). A charge will be levied for stands requiring water for filling spas, swimming pools, ponds, etc.

Furniture hire

Limited tressle tables and chairs are available on a first come first serve basis. Please add these to your booking at the time of booking.

SECURITY AND VEHICLE ADMISSION

Security

The Showground covers over 60 acres, and while security is provided, it can only be in general terms. Security will be on Entrance 1 and Entrance 6 from 8:00am on Friday 10th April to 8:00pm on Saturday 11th April.

Security patrols will be in operation during this time.

In order to improve security, no person will be allowed onto the Showground from Friday 10th April to Sunday 11th April without a valid ticket. Exhibitors will be issued with tickets which will also be valid for setting up and breaking down. You will also need to apply for a Static Vehicle pass if a vehicle is to remain on site during Show hours.

KCAS's security may carry out random security searches on all vehicles and trailers at any time without notice. Refusal of this request may result in attendance of Kent Police.

Vehicle admission pre/post Show

Vehicles will only be admitted from Entrance 1 off the A249.

Any vehicles which are not essential to setting up the stand should be left in the car park and exhibitors should walk to their stand. No vehicle should be parked and left unattended on a neighbouring stand at any time during build-up and Show hours.

Vehicle admission during Show

Vehicle movement is strictly forbidden between 10:00am and 4:00pm on 11th April, and no vehicle will be allowed entry to the Showground.

Even if you have parked your vehicle on the Showground during the Show for a number of years, you must inform the Society and apply for the appropriate pass. Do not assume we are aware of the location of all vehicles parked in previous years. We will not issue passes without an application.

Static vehicle pass

This is required for those vehicles that form an essential part of the stand by may be removed each night of the Show. Only one per stand will be issued (more may be granted for motor stands) and this should be applied for on the initial trade stand application form. Please note static vehicle passes are NOT guaranteed and will be issued at the discretion of the Society. The static vehicle pass must be displayed in the vehicle at all times and any vehicles found onsite without this pass may be liable to towing.



CONTACT US:

Paige Paternoster

trandestands@kentshowground.co.uk | 01622 633061

www.kcas.org.uk