



**CYMDEITHAS AMAETHYDDOL PONTARGOTHI  
COTHI BRIDGE AGRICULTURAL SOCIETY**

NANTGAREDIG, CARMARTHENSHIRE, SA32 7NA

[www.cothibridgeshow.cymru](http://www.cothibridgeshow.cymru)

Holding No. 55/039/0094

# **SCHEDULE RHAGLEN**

**DYDD SADWRN, MAI 25, 2024  
SATURDAY, MAY 25, 2024**

**CYMDEITHAS AMAETHYDDOL PONTARGOTHI**

**COTHI BRIDGE AGRICULTURAL SHOW**

**116<sup>th</sup> ANNUAL AGRICULTURAL SHOW**

**Ar/on**

**FAES SIOE PONTARGOTHI SHOWFIELD SA32 7NA**

**DYDD SADWRN/ SATURDAY 25/05/2024**

**Secretary: Mrs Jacqueline Hinds**

**Llys Egwad, Llanegwad, Carmarthen SA32 7NJ**

**Telephone: 07432 283323 [secretary@cothibridgeshow.cymru](mailto:secretary@cothibridgeshow.cymru)**

**For latest up to date information please visit**

**[www.cothibridgeshow.cymru](http://www.cothibridgeshow.cymru)**

**Facebook: Cothi Bridge Showground**

**ADMISSION**

**ADULTS £7**

**CHILDREN UNDER 16 FREE**

## **RULES & REGULATIONS**

- 1 The object of the Society is to improve the breeding of Horses, Cattle, Sheep generally, also horsemanship & stock handling. Prizes will be given under the following conditions.
- 2 All objections to be made in writing & lodged with the Secretary. The objections must be made within 30 minutes of the end of the class with a deposit of £30.00, which will be forfeited should the objection not be upheld.
- 3 All disputes to be settled by the Committee, whose decisions will be final.
- 4 **The Show to commence at 9.00am prompt.**
- 5 If, in the opinion of the judges, the exhibits in any class are of insufficient merit, the Committee reserves the right to withhold the whole or any of the prizes.
- 6 **All entries must be accompanied by entry & first aid fees, closing date Monday 13<sup>th</sup> May 2024. Proof of exhibit entry will be required to enter the showfield, either by printed document or electronic device, Numbers to be collected on the day from the Secretary's office.**
- 7 The rules of an affiliated society will apply where required under the conditions of affiliation. 8 Correctly secured Skull Caps/ Riding Hats that meet current Safety Standards, as directed by breed & affiliated societies MUST be always worn by riders when mounted.
- 9 The classes will be judged in the order in which they appear in the Catalogue, but if considered necessary this order may be changed, & the exhibits not brought into the ring immediately on being called by the Stewards will be disqualified.
- 10 Perpetual Trophies to be held by the winner under a guarantee for 11 months, & thereafter returned undamaged & polished to the Secretary at least a month before show day, in the event of its loss the winner will reimburse the value of the trophy to the Society.
- 11 All Championship Trophies will be presented following the Supreme Championship judging. The committee reserves the right to withhold any trophies should the Champion not take part in the Supreme Championship event.
- 12 All animals will be considered & treated as being in the sole charge of the exhibitors, or their servants, during the whole time they are on the show field, & the show committee will not be responsible for any loss, damage or injury arising from accidents or other causes.
- 13 All Stallions four years old & over must hold a current licence & handled by a person 16 years old & over. Foals to be at least three weeks old & over on show day.
- 14 If there are fewer than 3 exhibits in any of the Horse/Pony classes then that class could be amalgamated at the Committee's discretion.
- 15 In Horse/Pony classes prizes will be allocated as follows:- 2 entries in class – 1<sup>st</sup> prize only, 4 entries – 1<sup>st</sup> & 2<sup>nd</sup> prizes, 5 entries – 1<sup>st</sup>, 2<sup>nd</sup> & 3<sup>rd</sup> prizes.
- 16 Cattle & Sheep entries will be taken on the day, they may also be pre-entered.
- 17 Only the driver of stock carrying vehicles in the cattle & sheep sections will be admitted free of charge. All other passengers must pay the full entrance charge.
- 18 For further information or queries please contact the secretary, [secretary@cothibridgeshow.cymru](mailto:secretary@cothibridgeshow.cymru). Under all circumstances the Committee's decisions will be enforced & final.
- 19 Under no circumstances are financial collections to be made on the field.
- 20 The committee will not be responsible for any error which may appear in the Schedule/Catalogue or any entry made in the wrong class. Numbers must be worn & be clearly visible. All exhibitors MUST ensure that they wear the correct number for the exhibit in hand, failure to do so may result in incorrect results being reported.
- 21 The Committee reserves the right to amend the rules at any time.

## **Health and Safety Policy (Cothi Bridge Show)**

### **PART 1: STATEMENT OF GENERAL POLICY**

The Cothi Bridge Show (CBS) committee is committed to ensuring that all activities relating to the show are carried out before, during and after the show itself with safety as its primary concern to not cause ill health or injury.

Specifically, the CBS committee will, so far as is reasonably practicable:

- Conduct the Society's undertaking in such a way as to ensure persons who may be involved in coordinating and preparing the showground before the event, participating as officials at the show itself, clearing the site after the event and anyone attending the show are not exposed to risks to their Health and Safety.
- Bring to the notice of all Exhibitors, Retailers, Caterers and their Agents and Employees, their duty to co-operate with the Society to ensure that this Policy is effective and to offer all necessary assistance to ensure the Health and Safety at the Show of all Exhibitors and others on the Society's Showground.
- Require those participating in, or attending, the Show to assist the Society in their aims of preventing accidents and abiding by the instructions given by Officials and Stewards before, during and after the event.
- Ensure that appropriate risk assessments are carried out for the Society's activities and be provided by and agreed with individual exhibitors.

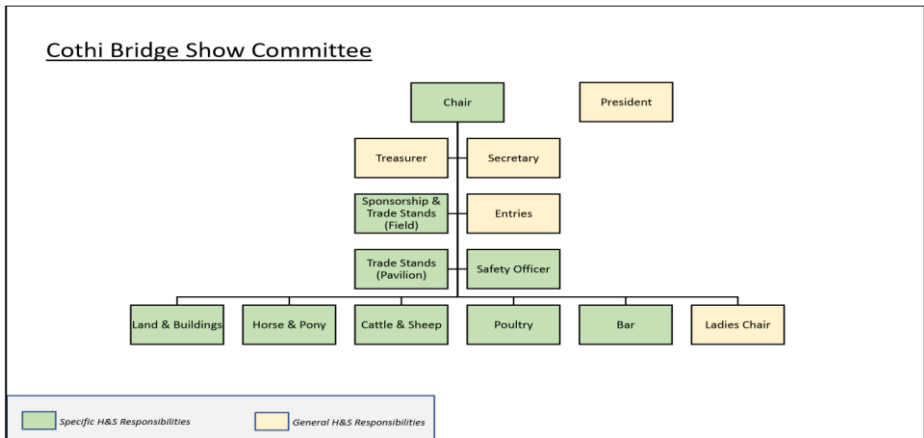
This statement has been approved and adopted on behalf of the CBS Committee by:

Signed      Matthew Jones  
(Chair)

Date: 15<sup>th</sup> February 2024

## PART 2: ORGANISATION – Roles and Responsibilities

The CBS Committee has the ultimate responsibility for overseeing H&S matters relating to the CBS, before, during and after the show itself.



**General H&S Responsibilities** – in addition to the specific responsibilities listed below for named committee members, all committee members shall be responsible for:

- (a) The promotion of a proactive H&S culture by setting a good H&S example to others.
- (b) Reporting deficiencies or concern regarding any aspect of H&S to the Safety Officer and the wider CBS committee for appropriate action.

The **CHAIR** shall be responsible for ensuring;

- (a) The Health and Safety Policy is developed, implemented, monitored and reviewed.
- (b) Health and Safety operational responsibility is delegated to competent officials.

The **OFFICIAL (LAND & BUILDINGS)** shall be responsible for ensuring:

- (a) The CBS land and buildings are compliant with H&S compliance obligations, and ensuring appropriate licences, permits and facilities are in place.
- (b) H&S Risk Assessments for Land and Buildings are appropriate, accurate and current.
- (c) The control measures specified in the risk assessment and applicable to Land and Buildings are implemented.
- (d) People under direction of the official have adequate information about the H&S risks and risk control measures that apply to their activity and are competent to undertake their activity.
- (e) Emergency arrangements relating to Land and Buildings are in place to respond to a major H&S incident.

- (f) Information relating to land and buildings that may be relevant to an investigation following a H&S incident (adverse event) is collated and made available, and to lead or assist in the investigation as requested.
- (g) The arrangements detailed in Part 3 of this policy for Electricity, Generators, Machinery and Toilet & Washing Facilities are implemented.

The **OFFICIAL (HORSE & PONY)**, **OFFICIAL (CATTLE & SHEEP)**, and **OFFICIAL (POULTRY)** – shall be responsible for ensuring:

- (a) The control of animals taking part in the show are compliant with H&S compliance obligations, and for ensuring appropriate licences, permits and facilities are in place.
- (b) H&S Risk Assessments for their areas or responsibility are recorded, and are appropriate, accurate and current.
- (c) The control measures specified in the risk assessments are implemented.
- (d) People under direction of the official have adequate information about the H&S risks and control measures that apply to their activity and are competent to undertake their activity.
- (e) Emergency arrangements relating to their area of responsibility are in place to respond to a major H&S incident.
- (f) Information relating to land and buildings that may be relevant to an investigation following a H&S incident (adverse event) is collated and made available, and to lead the investigation if requested.
- (g) The arrangements detailed in Part 3 of this policy for Animals (as applicable to their area of responsibility) are implemented.

The **OFFICIAL (BAR)** shall be responsible for ensuring:

- (a) The operation of the Bar is compliant with legal and H&S compliance obligations, and for ensuring appropriate licences, permits and facilities are in place.
- (b) A H&S Risk Assessments has been conducted and is recorded, and is appropriate, accurate and current.
- (c) The control measures specified in the risk assessments are implemented.
- (d) People under direction of the official have adequate information about the H&S risks and control measures that apply to their activity and are competent to undertake their activity.
- (e) Emergency arrangements relating to the Bar and surrounding area are in place to respond to a major H&S incident (such as a fire).
- (f) Information relating to the bar and surrounding area that may be relevant to an investigation following a H&S incident (adverse event) is collated and made available, and to lead or assist in the investigation if requested.
- (g) The arrangements detailed in Part 3 of this policy for Licensing for Alcoholic Refreshments are implemented.

The **SPONSORSHIP & TRADE STAND OFFICER (FIELD)** shall be responsible for ensuring:

- (a) The Trade Stands are compliant with H&S compliance obligations, and ensuring appropriate licences, permits and facilities are in place.
- (b) The H&S Risk Assessments covering Trade Stands are appropriate, accurate and current.
- (c) Trade Stand personnel are made aware of their H&S responsibilities (outlined below).
- (d) Information relating to Trade Stands that may be relevant to an investigation following a H&S incident (adverse event) is collated and made available, and to lead or assist in the investigation if requested.
- (e) The arrangements detailed in Part 3 of this policy for Liquid Petroleum Gas and Food Hygiene are implemented.

The **TRADE STAND OFFICER (PAVILION)** shall be responsible for ensuring:

- (a) The Trade Stands are compliant with H&S compliance obligations, and ensuring appropriate licences, permits and facilities are in place.
- (b) The H&S Risk Assessments covering Trade Stands are appropriate, accurate and current.
- (c) Trade Stand personnel are made aware of their H&S responsibilities (outlined below).
- (d) Information relating to Trade Stands that may be relevant to an investigation following a H&S incident (adverse event) is collated and made available, and to lead or assist in the investigation if requested.
- (e) The arrangements detailed in Part 3 of this policy for Food Hygiene are implemented for applicable trade stands within the pavilion.

The **SAFETY OFFICER** shall be responsible for:

- (a) Providing guidance and advice on health and safety matters.
- (b) Liaising with statutory and external authorities and other appropriate organisations.
- (c) Investigating and recording accidents, incidences and other H&S adverse events.
- (d) Briefing and training officials and stewards on the emergency procedure prior to the show day.
- (e) Co-ordinating health and safety and the response to emergency and major incidents in the Showground.
- (f) Coordinate the reporting of incidents in accordance to RIDDOR if/as required.
- (g) The arrangements detailed in Part 3 of this policy for Emergency Procedures, RIDDOR, Fire Precautions, and Safety Information are implemented.
- (h) Ensuring a Pavilion Fire Plan, and General Emergency Evacuation Procedures is available and updated.

**ORGANISERS, TRADE STAND PERSONNEL, CONTRACTORS** and their respective employees and Agents are responsible for ensuring that:

- (a) Everything reasonably practicable is done to ensure the Health, Safety and Welfare of those attending the show.
- (b) They conduct themselves and their activities so that they do not put themselves or anyone else at risk.
- (c) The access to, and egress, from the site is safe and unobstructed.

**MEMBERS OF THE PUBLIC AND COMPETITORS** are equally responsible for ensuring that they do not put other persons at risk or compromise the health and safety of others by their actions or omissions, and that they co-operate with the organisers in complying with Health and Safety legislation.

### **PART 3: H&S ARRANGEMENTS**

**EMERGENCY PROCEDURES** - In the event of a Major Incident occurring on the Showground during the Show period:

- (a) The Safety Officer should be contacted immediately by public address or radio.
- (b) A Incident Control point shall be the SECRETARY'S OFFICE.
- (c) The First Aid service and the duty doctor should be called as needed via the secretary's office.
- (d) Traffic and Gate Stewards shall assist emergency vehicles to the scene of the incident.
- (e) A Casualty Centre shall be the Main Pavilion (unless the incident is in the pavilion itself, in which case it shall be the bar tent).
- (f) Stewards will direct the public to designated assembly points if/as appropriate.

Further details of Emergency Procedures are contained in the Pavilion Fire Plan, and General Emergency Evacuation Procedures document.

**REPORTING OF INJURIES, DISEASES AND DANGEROUS OCCURRENCES (RIDDOR)** - Any accident or incident must be reported to the Show Safety Officer immediately. The Safety Officer will investigate incidents and liaise with enforcing authorities, show organisers and participants as appropriate in accordance with RIDDOR procedures. All accidents to be recorded in the Show's accident book.

**ELECTRICITY** – the position and routes of overhead and underground are known, and temporary electrical cables and distributions systems will be agreed; evidence of recent examination and test certificates for electrical installations and apparatus will be obtained for show ground installations and from individual exhibitors; earthing and earth leakage protection will be provided as necessary.

**GENERATORS** must be positioned well clear of tentage, straw bales, etc., which can, and do easily catch fire.

**LIQUID PETROLEUM GAS** – Trade Stand personnel and Caterers with LPG appliances should have had these examined and tested by a competent person.



MACHINERY & EQUIPMENT – All machinery and equipment should only be operated with adequate safety precautions in place, by competent or supervised people, provided with appropriate personal protective equipment.

SHOW ANIMALS – Routes used by Horses, Public and Vehicles will, as far as possible, be kept separate. Horses are not allowed into the Trade Stand and Catering areas. Dogs should be kept on leads at all times and children must be supervised by an adult.

PETS - All pets are to be kept under control at all times when on the show ground, or any other areas directly associated areas (such as the car park). Dogs are not to be left in cars and should be kept on leads at all times. Marquee and Pavilion stallholders must not keep dogs with them at their stalls.

FIRE PRECAUTIONS – A Fire Risk Assessment shall be carried out by an independent assessor periodically. The local Fire Brigade are consulted concerning Emergency access for Fire Brigade Vehicles and Emergency exits. Adequate Emergency firefighting equipment and appliances shall be provided.

SAFETY INFORMATION – Warning notices and signs are prominently displayed. First Aid sites are clearly marked.

TOILET AND WASHING FACILITIES – Adequate provision has been made for the expected number of visitors.

FOOD HYGIENE – Caterers are responsible for complying with the Local Environment Health Department legislation/Food Safety Act.

LICENSING FOR ALCOHOLIC REFRESHMENTS – Licences are held for alcohol sale.

GENERAL:

- a) If any person attending the Show fails to comply with the reasonable requirements relating to Health and Safety at the Show, the Society will have the right to eject that person from the Show.
- b) If Society officials fail to take adequate action where a breach comes to their notice, then they could find themselves, albeit unwittingly, in the position of condoning a breach of the regulations.

## **AMSERLEN BEIRNIADU/ JUDGING TIMETABLE**

10.00am OFFICIAL OPENING OF THE SHOW BY THE PRESIDENT

### **MAIN RING**

All four rings (1A,1B, 1C, & 1D) to start at 9am prompt. All sections to follow on.

|                 |                      |   |                |  |
|-----------------|----------------------|---|----------------|--|
| <b>9.00a.m.</b> | <b>Ring 1A</b>       | Welsh Ponies Section A<br>Welsh Mountain Ponies Section B<br>Welsh Part-Bred<br>Young Handler   | <b>Ring 1B</b> | Pony Breeding<br>In-Hand Arab<br>Palomino & Cremello<br>Mountain & Moorland In-Hand<br>Shetland Ponies |
| <b>9.00a.m.</b> | <b>Ring 1C</b>       | Welsh Ponies (Cob Type) Section C<br>Welsh Cobs Section D<br>Overall Welsh In-Hand Championship<br>Welsh Ponies & Cobs Under Saddle   | <b>Ring 1D</b> | In-Hand Hunter<br>Coloured Horses & Ponies<br>Riding Horse<br>Ridden Hunter                            |
| <b>4.30p.m.</b> | <b>(1A &amp; 1C)</b> | Supreme Horse & Pony Championship – W.R Pugh Perpetual Trophy<br>Presentation of Broomhill Perpetual Trophy for In-Hand Welsh Champion<br>Presentation of all overall Championship Trophies |                |  |
| <b>5.30p.m.</b> |                      | Inter Hunt Team Relay   |                |  |
| <b>9.00a.m.</b> | <b>Ring 2</b>        | Mountain & Moorland Ridden<br>Mini Show & Show Hunter Pony<br>Intermediate<br>Show Hunter Pony/ Show Pony<br>Veteran  |                |  |
| <b>9.00a.m.</b> | <b>Ring 3</b>        | Working Hunter<br>Working Hunter Pony<br>Mountain & Moorland Working Hunter Pony  |                |  |
| <b>9.00a.m.</b> | <b>Ring 4</b>        | Show Jumping<br>Arena Eventing  |                |  |

**A lunch break may be taken in Rings 2,3 & 4**

|                  |                     |               |                    |                 |
|------------------|---------------------|---------------|--------------------|-----------------|
| <b>10.30a.m.</b> | <b>Cattle Ring:</b> | Beef          | <b>Sheep Ring:</b> | Judging begins. |
| <b>11.00a.m.</b> | <b>Cattle Ring:</b> | Dairy         |                    |                 |
| <b>To follow</b> |                     | Young Handler |                    |                 |

**To follow**

**Cattle Ring:** Championships of Cattle sections **Sheep**

**Ring:** Championships of Sheep section

**11.00 a.m.** Judging of the Craft, Cookery & Horticulture Section

**12.00 a.m.** Judging of the Dog Show

Whilst every effort will be made to adhere to the stated times, the Show Committee reserve the right to alter the timing of or amalgamate the classes as may be necessary. It is the responsibility of the exhibitors to be in the collecting ring ready for their class. Once judging has commenced, exhibitors will NOT be allowed to enter the ring.

PLEASE PAY ATTENTION TO RING ANNOUNCEMENTS

## **BEIRNIAID 2024 JUDGES**

### **Ceffylau/ Horses**

Welsh Part Bred: Mrs KJ Davies (Pica)

Welsh Mountain Ponies Section A: Mrs KJ Davies (Pica)

Welsh Mountain Ponies Section B: Mr AS Phillips (Amar)

Welsh Mountain Ponies of Cob Type Section C: Mrs T Hook (Kemysfawr)

Welsh Cobs Section D: Mr A Thomas (Caederwen)

Overall Welsh In-Hand Championship

Welsh Ponies & Cobs A, B,C,D & Part Bred under saddle: Ms A Edwards (Coy church)

Pony Breeding: Mr Ben Spoor

Shetland Ponies: TBC

Pure, Part & Anglo Arab: Mr Ben Spoor

Palomino & Cremello: Mrs Michelle Spor

Coloured Horse & Pony: Mrs R Thomas

Hunters In-Hand: Mr N Deakin

Hunters Ridden: Mr N Deakin

Riding Horse: Mr N Deakin

Young Handler: TBC

Mountain & Moorland In-Hand & Ridden (Open & Mini): Miss D Morgan

Mini Show & Show Hunter Pony: Miss K Twigg

Show Pony & Show Hunter Pony: Miss K Twigg

Intermediate: Miss K Twigg

Veteran: Mrs R Thomas

Working Hunter: TBC

Working Hunter Pony: TBC

Mountain & Moorland Working Hunter Pony: TBC

Supreme Horse & Pony Championship – WR Pugh Trophy: TBC

### Gwartheg/ Cattle

Limousin: Mr Dylan Davies  
Simmental: Mr Aled Davies  
Any Native Beef: Mrs Jane Davies  
Any Other Continental Beef: Mr Dylan Davies  
Beef Cattle Championship: Mr Clive Roads  
Holstein UK: Mr Rhys Griffiths  
Any Other Dairy Breed: Mr James Hughes  
Dairy Cattle Championship: Mr Meirion Williams  
Young Handlers:-  
Beef: Mr Aled Davies  
Dairy: Mr Rhys Griffiths

### DEFAID/SHEEP

Texel: Mr Keith Evans  
Blue Texel: Mr Keith Evans  
Coloured Continental: Mr Darren Hayward  
White Continental: Mr Keith Evans  
Suffolk: Mr D Jones  
Poll Dorset Horn: Mr Guto Lewis  
Kerry Hill: Mr D Jones  
Dutch Spotted: Mr Darren Hayward  
Any Other Lowland: Mr D Jones  
Any Other Hill: Mr Rhydian Glyn  
Black Welsh Mountain: Mrs Sian Hayward  
Badgerface Welsh Mountain (Torddu/ Torwen): L K Levigne  
Shetland: Ms J Bissett  
Rare, Longwool & Primitive: Ms J Bissett  
Wool on Hoof: Ms J Bissett  
Supreme Sheep Championship Mr Clive Roads

ADRAN Y CŴN/ DOG SHOW JUDGE – Mr Llyr Thomas

**Exhibitors for all Horse sections please note entries close 12/05/2024.**

**Showjumping entries close 23/05/2024**

**Cattle & Sheep may be pre-entered or entered on the day.**

**Dog show entry on the day.**

**Craft, Cookery, Horticulture entry on the day.**

## ADRAN CEFFYLAU/ HORSE SECTION

**All horse section entries must be entered through the Showing Scene website.**

**<https://showingscene.com>**

**Link also to be found on the Society website – [www.cothibridgeshow.cymru](http://www.cothibridgeshow.cymru) No paper entries will be accepted.**

**COTHI BRIDGE SHOW IS AFFILIATED TO,  
AND IS A QUALIFYING SHOW FOR, THE FOLLOWING:**

This show is affiliated to the Welsh Pony & Cob Society. Affiliation number AF000141. Animals must be entered correctly in line with the rules, detailed in the WPCS Judging & showing Handbook which can be found on the Society website [www.wpcs.uk.com](http://www.wpcs.uk.com) or requested from the WPCS office. Failure to comply with the rules may result in the withholding of awards.

Your Personal Data:

Exhibitor you will need to provide the WPCS with certain personal information relating to you. Your privacy is extremely important to WPCS, so we want you to know exactly how we will use that personal information. Our full privacy notice setting out detailed information about matters such as what personal information we use, for what purpose we use it, what our legal basis for doing so is and who we share your personal information with, can be viewed on our website <http://wpcs.uk.com/> If you would prefer to see a hard copy of our privacy notice, please ask a member of WPCS staff to provide you with the same.

**Silver Status Show – qualifying classes 1-41** – The medal will only be awarded to an animal if the owner is a current member of the WPCS. Non-members have 14 days from the date of the show to become a member.

**Sire Rating show** – Nominated show for the Carmarthenshire Welsh Pony & Cob Association points scheme. Nominated show for the Dyfed Welsh Pony & Cob Association points scheme.

### **THE NATIONAL WELSH CHAMPIONSHIP SHOW**

11th August 2024. 3 Counties Showground, Malvern.

See Sections relevant to registered Welsh breeds (In Hand & Ridden) for qualification details. Qualifiers will be directly contacted after this show with details of qualification and entry details. For Show Details and Schedule see our **Facebook Page**.

### **IN HAND**

#### **WPCS Affiliated Medal Sections.**

- a. This Section is a qualifier for The National Welsh Championship Show 2024 - National Section A, B, C, D & Part Bred In-Hand Championship . The Section Champion, Reserve & Youngstock Champion & Reserve (not already qualified) qualify to enter.
- b. This Section is a qualifier for The National Welsh Championship Show 2024 - National Gelding In-Hand Championship sponsored by Sarum Investments Ltd. All 1st & 2nd placed WPCS registered Section A, B, C, D & WPBR geldings in relevant classes (not already qualified) qualify to enter.

### **RIDDEN**

#### **WPCS Affiliated OPEN (no Novice Sections) Ridden Sections**

This Section/Classes are qualifiers for **The National Welsh Championship Show 2024 - National Ridden Section A, B, C, & D Championships** sponsored by The Brynseion Stud. All 1st & 2nd placed exhibits (not already qualified) qualify to enter.

Classes in the following sections: Pony Breeding, Coloured Horse & Ponies, In-Hand Hunter, Riding Horse, M&M ridden, Mini Show & SHP, Show Hunter Pony & Show Pony are qualifiers for The National Welsh Championship Show 2024.

Qualifying details are listed with the relevant classes on Showing Scene.

**BRITISH SHOWJUMPING – [www.britishshowjumping.co.uk](http://www.britishshowjumping.co.uk)**

## **INTER HUNT TEAM RELAY COMPETITION**

Inter Hunt entries must be submitted to the secretary Jacqueline Hinds.

For further information, Tel: **07432 283323** or email [secretary@cothibridgeshow.cymru](mailto:secretary@cothibridgeshow.cymru)

**A declaration of Third party/ Public Liability Insurance cover for both riders & horses will have to be made.**

### **RULES**

- This is a knockout relay competition and will be held in the main ring at approximately 5.30p.m.
- A team of four riders and four horses, one to be nominated as Chef d'Equipe.
- Riders to have hunted regularly with their hunt. Each team must include at least 3 riders over the age of 18.
- One Junior rider is permitted, 16 years or over on the day of the show.
- Neither excessive use of the crop nor carrying it in the mouth is permitted when competing.
- Riders are expected to be correctly dressed for a day's hunting and wearing BSI standard headgear.
- Spurs are not allowed.
- Must have hunted regularly with their respective Hunt, should be owned by members and stabled within their hunt country.
- Each team is permitted to bring an extra horse in case of an accident/injury. 14-2hh minimum height.

**The Course** will comprise of jumps & obstacles designed to be similar to those encountered during a day's hunting.

- Two identical interconnecting courses will be set out in mirror image, designed to be jumped by two horses at a time.
- Fences that may be encountered are Tiger Traps, Picnic Tables, Hunting Gates, Bending Poles, straw Bales, Tyres, Brushes, Water Trays, Walls, Ditches and a Bullfinch etc.
- Obstacles, direction & course plan may change at the discretion of the Course Director.
- A warm up/ practice fence will be made available.
- Assemble in the ring within the holding box. First members of the team line up on start, when given signal will set off. On completion of the course the first rider must cross the finish line and hand over the baton/crop to the next member. This is repeated until all 4 team members have completed the course.
- The first team to have all four members across the finish line wins.

- Team members are required to stay within the holding area and it is their responsibility to keep out of the way of other competitors.
- No outside help is permitted, ring stewards to assist if necessary.
- Knockdowns, falls & refusals will not be penalised, however after 3 refusals at any one fence, competitors must make their way back to the holding area, exchange with the next team member who must continue from the place of refusal and on completing must reduce to a walk in the holding area before continuing their round.
- In the event of a team member retiring the next member must start from the point of retirement and continue as above.
- Competitors will be stopped if there is a fall to a horse or rider or if a horse becomes loose, then the restart will be from the point of stoppage.

**Declaration** to be made by the Chef d'Equipe at the Secretary's Office an hour before the start of competition.

Teams will compete in draw order, which will have been made prior to the show.

**Commentary.** A completed pro-forma with team members listed in competition order will be required for the commentator.

## **MAIN RING**

### **WELSH PART-BRED**

Affiliation & qualifying show details can be found at the beginning of the horse section.

#### **ENTRY FEE: £10.00**

Prizes 1<sup>st</sup> - £15, 2<sup>nd</sup> - £8, 3<sup>rd</sup> - £5

1. Yearling Colt
2. Yearling Colt, Filly or Gelding
3. 2 or 3 year old Colt
4. 2 or 3 year old Filly or Gelding
5. Brood mare, 4 years old & over, in foal or with foal at foot
6. Foal, must be at least 3 weeks old on show day
7. Barren Mare or Gelding, 4 years old & over
8. Stallion, 4 years old or over & must hold current licence

**Welsh Part-Bred Championship** (1<sup>st</sup> & 2<sup>nd</sup> in classes 1-8 to compete)

The Champion qualifies for the Overall Welsh Championship & Supreme Horse & Pony Championship.

### **WELSH MOUNTAIN PONIES – SECTION A**

Affiliation & qualifying show details can be found at the beginning of the horse section.

**ENTRY FEE: £10.00**

Prizes 1<sup>st</sup> - £15, 2<sup>nd</sup> - £8, 3<sup>rd</sup> - £5

9. Yearling Colt
10. Yearling Filly or Gelding
11. 2 year old Filly or Gelding
12. 3 year old Filly or Gelding. Fillies with foals at foot not eligible.
13. 2 or 3 year old Colt
14. Brood Mare, 4 years old & over, in foal or with foal at foot
15. Foal, must be at least 3 weeks old on show day
16. Barren Mare or Gelding, 4 years old & over
17. Stallion, 4 years old or over & must hold current licence

**Section A – Best Foal in class 15**, Perpetual Windleshaw Stud Trophy

**Section A – Youngstock Championship**, (1<sup>st</sup> & 2<sup>nd</sup> in classes 9-13 & 15 to compete), Perpetual Mr Llewellyn Rees Jones Cup

**Section A – Championship** (1<sup>st</sup> & 2<sup>nd</sup> in classes 9-17 to compete), Perpetual Mr R Davies, Alltyferin Cup

The Champion qualifies for the Overall Welsh Championship & Supreme Horse & Pony Championship

### **WELSH PONIES – SECTION B**

Affiliation & qualifying show details can be found at the beginning of the horse section.

**ENTRY FEE: £10.00**

Prizes 1<sup>st</sup> - £15, 2<sup>nd</sup> - £8, 3<sup>rd</sup> - £5

18. Yearling Colt
19. Yearling Filly or Gelding
20. 2 or 3 year old Colt
21. 2 or 3 year old Filly or Gelding
22. Brood Mare, in foal or with foal at foot, Barren Mare or Gelding, 4 years old & over
23. Foal, must be at least 3 weeks old on show day
24. Stallion, 4 years old & over & must hold current licence

**Section B – Best Foal in class 23**, Perpetual Windleshaw Stud Trophy

**Section B – Youngstock Championship** (1<sup>st</sup> & 2<sup>nd</sup> in classes 18-21 & 23 to compete), Perpetual Linksbury Stud Trophy

**Section B Championship** (1<sup>st</sup> & 2<sup>nd</sup> in classes 18-24 to compete), Perpetual Cennen Trophy

The Champion qualifies for the Overall Welsh Championship & Supreme Horse & Pony Championship



### **WELSH PONIES (COB TYPE) SECTION C**

Affiliation & qualifying show details can be found at the beginning of the horse section

**ENTRY FEE: £10.00**

Prizes 1<sup>st</sup> - £15, 2<sup>nd</sup> - £8, 3<sup>rd</sup> - £5

- 25. Yearling Colt
- 26. Yearling Filly or Gelding
- 27. 2 year old Filly or Gelding
- 28. 3 year old Filly or Gelding (Fillies with foal at foot ineligible)
- 29. 2 or 3 year old Colt
- 30. Brood Mare, in foal or with foal at foot, Barren Mare or Gelding, 4 years old & over
- 31. Foal, must be at least 3 weeks old on show day
- 32. Stallion, 4 years old & over & must hold current licence

**Section C – Best Foal in class 31**, Perpetual Windleshaw Stud Trophy

**Section C – Youngstock Championship** (1<sup>st</sup> & 2<sup>nd</sup> in classes 25-29 & 31 to compete), Perpetual Fronarth Trophy

**Section C Championship** (1<sup>st</sup> & 2<sup>nd</sup> in classes 25-32 to compete), Perpetual Gerdig Trophy

The Champion qualifies for the Overall Welsh Championship & Supreme Horse & Pony Championship

### **WELSH COBS - SECTION D**

Affiliation & qualifying show details can be found at the beginning of the horse section

**ENTRY FEE: £10.00**

Prizes 1<sup>st</sup> - £15, 2<sup>nd</sup> - £8, 3<sup>rd</sup> - £5

- 33. Yearling Colt
- 34. Yearling Filly or Gelding
- 35. 2 year old Filly or Gelding
- 36. 3 year old Filly or Gelding – Fillies with foals at foot not eligible
- 37. 2 or 3 year old Colt
- 38. Brood Mare, 4 years old & over, in foal or with foal at foot
- 39. Foal, must be at least 3 weeks old on show day
- 40. Barren Mare or Gelding, 4 years old & over
- 41. Stallion, 4 years old & over & must hold current licence

**Section D – Best Foal in class 39**, Perpetual Windleshaw Stud Trophy

**Section D – Youngstock Championship** (1<sup>st</sup> & 2<sup>nd</sup> in classes 33-37 & 39 to compete), Perpetual Dyffryn Cothi Stud Trophy

**Section D Championship** (1<sup>st</sup> & 2<sup>nd</sup> in classes 33-41 to compete), Perpetual Derwen Trophy

The Champion qualifies for the Overall Welsh Championship & Supreme Horse & Pony Championship

## **WELSH PONY & COB IN-HAND CHAMPIONSHIP THE BROOMHILL PERPETUAL TROPHY**

Only the In-Hand Champions  
Welsh Section A, B, C, D & Part Bred eligible to compete.

The Champion will receive a prize of £75  
Reserve Champion will receive a prize of £25

### **WELSH PONIES & COBS – UNDER SADDLE**

Affiliation & qualifying show details can be found at the beginning of the horse section

#### **ENTRY FEE: £10.00**

Prizes 1<sup>st</sup> - £15, 2<sup>nd</sup> - £8, 3<sup>rd</sup> - £5

- 42. Welsh Section A – Stallion, Mare or Gelding 4 years old & over, to be shown under saddle. Lead reins are not eligible.
- 43. Welsh Section B – Stallion, Mare or Gelding 4 years old & over, to be shown under saddle. Lead reins are not eligible.
- 44. Welsh Section C – Stallion, Mare or Gelding 4 years old & over, to be shown under saddle 45. Welsh Section D – Stallion, Mare or Gelding 4 years old & over, to be shown under saddle.
- 46. Welsh Part-Bred – Stallion, Mare or Gelding 4 years old & over shown under saddle. Must be registered with WPCS. Rider any age. Lead reins are not eligible

Ridden Welsh Championship – Sections A, B, C, D & Part-Bred to compete for the WPCS Performance medal (1<sup>st</sup> & 2<sup>nd</sup> in classes 42-46 to compete.)

The Champion qualifies for the Overall Welsh Championship & Supreme Horse & Pony Championship

### **PONY BREEDING**

**(Show Pony & Show Hunter Pony Type)**

#### **ENTRY FEE: £10.00**

Prizes 1<sup>st</sup> - £15, 2<sup>nd</sup> - £8, 3<sup>rd</sup> - £5

- 47. Pony Stallion, Mare with or without foal at foot, or Gelding 4 years old & over in hand 48. Pony 3 years old & under – Colt, Filly or Gelding, not to exceed 153cm at maturity.

Pony Breeding Championship, (1<sup>st</sup> & 2<sup>nd</sup> in classes 47 & 48 to compete) Perpetual Trophy.

The Champion qualifies for the Overall Welsh Championship & Supreme Horse & Pony Championship

### **SHETLAND PONY**

**ENTRY FEE: £10.00**

Prizes 1<sup>st</sup> - £15, 2<sup>nd</sup> - £8, 3<sup>rd</sup> - £5

### **MINIATURE SHETLAND PONY**

- 49. Miniature yearling – Colt, Filly or Gelding
- 50. Miniature 2 or 3 year old – Colt, Filly or Gelding (3 year old fillies with foals at foot may not be shown)
- 51. Miniature Stallion, Mare in foal or with foal at foot, Barren Mare or Gelding – 4 years old & over.

Miniature Shetland Championship (1<sup>st</sup> & 2<sup>nd</sup> in classes 49-51 to compete) Perpetual Goytre Trophy.

The Champion qualifies for the Overall Welsh Championship & Supreme Horse & Pony Championship

### **STANDARD SHETLAND PONY**

- 52. Stallion, Mare in foal or with foal at foot, Barren Mare or Gelding – 4 years old & over.
- 53. Yearling Colt, Filly or Gelding
- 54. 2 or 3 year old Colt, Filly or Gelding (3 year old fillies with foals at foot may not be shown)
- 55. Ridden Shetland – 4 years old & over.

Shetland Pony Championship (1<sup>st</sup> & 2<sup>nd</sup> in classes 52-55 to compete) Perpetual Celtic Stud Trophy.

The Champion qualifies for the Overall Welsh Championship & Supreme Horse & Pony Championship

### **MOUNTAIN & MOORLAND PONIES**

**(In-Hand)**

Affiliation & qualifying show details can be found at the beginning of the horse section

**ENTRY FEE: £10.00**

Prizes 1<sup>st</sup> - £15, 2<sup>nd</sup> - £8, 3<sup>rd</sup> - £5

- 56. Mountain & Moorland Large Breeds In-Hand. Dales, Fells, Highlands, New Forest, Connemara, Welsh Section C & D. Any height, any age.
- 57. Mountain & Moorland Small Breeds In-Hand. Dartmoor, Exmoor, Shetland, Welsh Section A & B. Any age, any height.

Mountain & Moorland In-Hand Championship (1<sup>st</sup> & 2<sup>nd</sup> in classes 56 & 57 to compete) Perpetual Trophy.

The Champion qualifies for the Overall Welsh Championship & Supreme Horse & Pony Championship

**IN-HAND ARAB**  
**(Part, Anglo & Pure)**

**ENTRY FEE: £10.00**  
**Prizes 1<sup>st</sup> - £15, 2<sup>nd</sup> - £8, 3<sup>rd</sup> - £5**  
**PART BRED & ANGLO ARABS**

- 58. 4 year old & over In-Hand
- 59. 1, 2 & 3 year old In-Hand

**PURE BRED ARABS**

- 60. Yearling, 2, 3 or 4 year old Filly or Gelding, In-Hand

**In-Hand Arab Championship** (1<sup>st</sup> & 2<sup>nd</sup> in classes 58 – 60 to compete), Perpetual Jacala Trophy.

The Champion qualifies for the Overall Welsh Championship & Supreme Horse & Pony Championship

**PALOMINO & CREMELLO**

**ENTRY FEE: £10.00**  
**Prizes 1<sup>st</sup> - £15, 2<sup>nd</sup> - £8, 3<sup>rd</sup> - £5**

- 61. Palomino 4 year old & over, In-Hand
- 62. Palomino 3 year old & under Colt, Filly or Gelding, In-Hand
- 63. Ridden Palomino 4 years old & over
- 64. Cremello – any age In-Hand or under saddle. Rider any age.

**Palomino & Cremello Championship** (1<sup>st</sup> & 2<sup>nd</sup> in classes 61-64 to compete), Perpetual Jacala Trophy.

The Champion qualifies for the Overall Welsh Championship & Supreme Horse & Pony Championship.

**COLOURED HORSE & PONY**

**ENTRY FEE: £10.00**  
**Prizes 1<sup>st</sup> - £15, 2<sup>nd</sup> - £8, 3<sup>rd</sup> - £5**

- 65. Non-Native Open In-Hand – any height
- 66. Native/Cob/Traditional Open In-Hand – any height
- 67. Open Youngstock – Yearlings only
- 68. Open Youngstock – 2 or 3 year old, shown In-Hand
- 69. Non-Native Open Ridden – 4 years old & over, any height
- 70. Native/Cob/Traditional Open Ridden – 4 years old & over, any height

**Coloured Horse & Pony Championship** (1<sup>st</sup> & 2<sup>nd</sup> in classes 65-70 to compete), Perpetual Eisenfarn Trophy.

The Champion qualifies for the Overall Welsh Championship & Supreme Horse & Pony Championship.

### **IN-HAND HUNTER**

**ENTRY FEE: £10.00**

Prizes 1<sup>st</sup> - £15, 2<sup>nd</sup> - £8, 3<sup>rd</sup> - £5

71. Hunter – Mare or Gelding, 4 years old & over
72. Yearling – Colt Filly or Gelding
73. 2 or 3 year old – Colt filly or Gelding

**In-Hand Hunter Championship**(1<sup>st</sup> & 2<sup>nd</sup> in classes 71-73 to compete).

The Champion qualifies for the Overall Welsh Championship & Supreme Horse & Pony Championship.

### **RIDDEN HUNTER**

**ENTRY FEE: £10.00**

Prizes 1<sup>st</sup> - £15, 2<sup>nd</sup> - £8, 3<sup>rd</sup> - £5

74. Lightweight/ Middleweight Hunter – Mare or Gelding, 4 years old & over, to be ridden by a Lady or Gent
75. Middleweight/ Heavyweight Hunter - Mare or Gelding, 4 years old & over, to be ridden by a Lady or Gent
76. Small Hunter - exceeding 148cm but not exceeding 158cm. Riders to have attained their 16<sup>th</sup> birthday by 1<sup>st</sup> January in the current year.

**Ridden Hunter Championship**, (1<sup>st</sup> & 2<sup>nd</sup> in classes 74-76 to compete) Perpetual Davies, Tircae Trophy.

The Champion qualifies for the Overall Welsh Championship & Supreme Horse & Pony Championship.

### **RIDING HORSE**

**ENTRY FEE: £10.00**

Prizes 1<sup>st</sup> - £15, 2<sup>nd</sup> - £8, 3<sup>rd</sup> - £5

77. Open Small Riding Horse – Mare or Gelding, 4 years old & over, exceeding 148cms but not exceeding 158cms. Riders to have attained their 15<sup>th</sup> Birthday on 1<sup>st</sup> January in the current year.
78. Open Large Riding Horse – Mare or Gelding, 4 years old & over, exceeding 158cms. Riders to have attained their 15<sup>th</sup> birthday on 1<sup>st</sup> January in the current year.
79. Open Ridden Cob, exceeding 148cms. Riders to have attained their 15<sup>th</sup> birthday on 1<sup>st</sup> January in the current year.
80. Part, Anglo & Pure Bred Arab, 4 years old & over, under saddle. Riders any age.
81. Thoroughbreds Under Saddle. Open to all Weatherby registered Thoroughbreds to have raced under rules, 4 years & over. (Passports will be checked). Judging will be as a riding horse class.

**Riding Horse Championship**, (1<sup>st</sup> & 2<sup>nd</sup> in classes 77-81 to compete) Perpetual Coleg Sir Gâr Trophy.

The Champion qualifies for the Overall Welsh Championship & Supreme Horse & Pony Championship.

## **YOUNG HANDLER**

Classes 82 & 83 are open to all.

ENTRY FEE: £10.00

Prizes 1<sup>st</sup> - £15, 2<sup>nd</sup> - £8, 3<sup>rd</sup> - £5

Turn out of exhibit, handler & ring performance will be judged not conformation of horse or pony. Mare or Gelding of any breed.

- 82. Best young Handler, 6-10 years of age on day of show
- 83. Best young Handler, 11-16 years of age on day of show

Rosettes will be presented to all competitors in classes 82 & 83.

## **RING 2**

### **MOUNTAIN & MOORLAND RIDDEN**

(Open Ridden)

Affiliation & qualifying show details can be found at the beginning of horse section.

ENTRY FEE: £10.00

Prizes 1<sup>st</sup> - £15, 2<sup>nd</sup> - £8, 3<sup>rd</sup> - £5

- 84. Mountain & Moorland Open Ridden – Large Breeds  
Open to registered pure bred M&M mares, geldings & stallions 4years old & over. Rider any age, except Stallion riders who MUST be over 16 years old.  
Large breeds – Dales, Fells, Highlands, New Forest, Connemara, Welsh Section C & D. Part breds are NOT eligible
- 85. Mountain & Moorland Open Ridden – Small Breeds  
Open to registered pure bred M&M mares, geldings & stallions 4years old & over. Rider any age, except Stallion riders who MUST be over 16 years old.  
Small breeds – Dartmoor, Exmoor, Shetland, Welsh Section A & B. Part breds are NOT eligible.
- 86. Mountain & Moorland First Ridden – Mares & Geldings, not exceeding 128cms. Open to registered pure bred M&M mares & geldings 4 years old & over. Riders must have attained their 3<sup>rd</sup> birthday but must not have attained their 12<sup>th</sup> birthday before 1<sup>st</sup> January in the current year. Part breds are NOT eligible.
- 87. Mountain & Moorland Lead Rein – Mares & Geldings, not exceeding 122cms. Open to registered pure bred M&M Mares & geldings 4 years old & over. Riders must have attained their 3<sup>rd</sup> birthday but must not have attained their 9<sup>th</sup> birthday before 1<sup>st</sup> January in the current year. Part breds are NOT eligible.

Rosettes will be presented to all competitors in class 87.

**Mountain & Moorland Open Ridden Championship** (1<sup>st</sup> & 2<sup>nd</sup> in classes 84-87 to compete) Perpetual Gwyn Jones Trophy.

**The Champion qualifies for the Overall Supreme Championship.**

### **MINI SHOW & SHOW HUNTER PONY**

**ENTRY FEE: £10.00**

**Prizes 1<sup>st</sup> - £15, 2<sup>nd</sup> - £8, 3<sup>rd</sup> - £5**

88. Leading Rein Show Pony Mare or Gelding 4 years old & over, not exceeding 122cms. Suitable to be ridden by a rider not to have attained their 8<sup>th</sup> birthday before 1<sup>st</sup> January in the current year. To be led by an attendant & shown in a snaffle bridle. Lead rein to be attached to the noseband.
89. First Ridden show Pony Mare or Gelding, 4 years old & over, not exceeding 122cms. Suitable to be ridden by a rider not to have attained their 10<sup>th</sup> birthday before 1<sup>st</sup> January in the current year. To be shown in any suitable snaffle bridle.
90. Leading Rein Pony of Hunter Type, Mare or Gelding, 4 years old & over not exceeding 122cms. Suitable to be ridden by a rider not to have attained their 9<sup>th</sup> birthday before 1<sup>st</sup> January in the current year. To be led by an attendant & shown in a snaffle bridle, lead rein to be attached to the noseband.

Rosettes will be presented to all competitors in classes 88-90.

**Open Mini Pony Championship** (1<sup>st</sup> & 2<sup>nd</sup> in classes 88-90 to compete), Open Mini Show Pony Championship to be judged within.

The Champion qualifies for the Overall Supreme Championship.

### **INTERMEDIATE**

**ENTRY FEE: £10.00**

**Prizes 1<sup>st</sup> - £15, 2<sup>nd</sup> - £8, 3<sup>rd</sup> - £5**

91. Mixed Height Intermediate Show Riding Type.  
Mare or Gelding 4 years old & over, exceeding 146cms but not exceeding 158cms. Suitable to be ridden by a rider not to have attained their 25<sup>th</sup> birthday before 1<sup>st</sup> January in the current year.
92. Open Intermediate Show Hunter.  
Mare or Gelding 4 years old & over, exceeding 148cms but not exceeding 158cms. Suitable to be ridden by a rider not to have attained their 25<sup>th</sup> birthday before 1<sup>st</sup> January in the current year.

**Open Intermediate Championship** (1<sup>st</sup> & 2<sup>nd</sup> in classes 91-92 to compete)

The Champion qualifies for the Overall Supreme Championship.

### **SHOW HUNTER PONY/SHOW PONY**

**ENTRY FEE: £10.00**

Prizes 1<sup>st</sup> - £15, 2<sup>nd</sup> - £8, 3<sup>rd</sup> - £5

- 93. Mixed Height Novice Show Hunter Pony, Mare or Gelding 4 years old & over not exceeding 153cms. Riders must be the correct age for the age of the pony they ride.
- 94. Mixed Height Open show Hunter Pony, Mare or Gelding 4 years & over not exceeding 153cms. Riders must be the correct age for the pony they ride.
- 95. Mixed Height Novice show Pony, Mare or Gelding 4 years & over not exceeding 148cms. Riders must be the correct age for the pony they ride.
- 96. Mixed Height Open Show Pony, Mare or Gelding 4 years old & over not exceeding 148cms. Riders must be the correct age for the pony they ride.

**Show Hunter Pony/ Show Pony Championship** (1<sup>st</sup> & 2<sup>nd</sup> in classes 93-96 to compete)

The Champion qualifies for the Overall Supreme Championship.

### **VETERAN HORSE OR PONY**

**ENTRY FEE: £10.00**

Prizes 1<sup>st</sup> - £15, 2<sup>nd</sup> - £8, 3<sup>rd</sup> - £5

- 97. In-Hand
- 98. Ridden – Riders to be correct height for the Horse/pony they ride.

**Veteran Championship** (1<sup>st</sup> & 2<sup>nd</sup> in classes 97-98 to compete) The

Champion qualifies for the Overall Supreme Championship.

## **RING 3**

### **WORKING HUNTER**

**ENTRY FEE: £10.00**

Prizes 1<sup>st</sup> - £15, 2<sup>nd</sup> - £8, 3<sup>rd</sup> - £5

- 99. Novice Working Hunter – Mare or Gelding 4 years old & over exceeding 153cms not having won a 1<sup>st</sup> prize of £30 or a total (or equivalent values) in prize money in any Working Hunter Class, or more than 10BE points or £150 BS Showjumping, at home or abroad before 1<sup>st</sup> January in the relevant year. Fences in Novice Working Hunter Classes should have a minimum height of 0.85m & a maximum height of 1.07m
- 100. Open Working Hunter – Mare or Gelding 4 years old & over exceeding 153cms. Grade A Showjumpers & Advanced Event Horses are not eligible to compete. Fences should have a maximum height of 1.14m

**Working Hunter Championship** (1<sup>st</sup> & 2<sup>nd</sup> in classes 99-100 to compete)

The Champion qualifies for the Overall Supreme Championship.



## **WORKING HUNTER PONY**

**ENTRY FEE: £10.00**

Prizes 1<sup>st</sup> - £15, 2<sup>nd</sup> - £8, 3<sup>rd</sup> - £5.

101. Mixed Height Novice WHP/ Intermediate WH Mare or Gelding, 4 years old & over not exceeding 158cms. Riders MUST jump in their correct height section & be of the correct age for the height of the animal they ride. Riders may ride more than one pony providing the animals are of a different height section.

Riders must declare if they are competing in the 153cms or the Intermediate Section.

102. Mixed Height Open WHP/ Intermediate WH Mare or Gelding, 5 years old & not exceeding 158cms. Riders MUST jump in their correct height section & be of the correct age for the height of the animal they ride. Riders may ride more than one pony providing the animals are of a different height section. (see rule 37)

Riders must declare if they are competing in the 153cms or the Intermediate Section.

**Working Hunter Pony/ Intermediate Championship** (1<sup>st</sup> & 2<sup>nd</sup> in classes 101-102 to compete), Perpetual Gareth Roderick Trophy.

The Champion qualifies for the Overall Supreme Championship.

103. Cradle Stakes, Mare or Gelding, 4 years old & over, not exceeding 122cms. Suitable to be ridden by a rider not to have attained their 11<sup>th</sup> birthday before 1<sup>st</sup> January in the current year. Rosettes will be presented to all competitors in class 103.

104. Open Nursery Stakes, Mare or Gelding, 4 years old & over, not exceeding 133cms. Suitable to be ridden by a rider not to have attained their 12<sup>th</sup> birthday before 1<sup>st</sup> January in the current year.

**Mini Working Hunter Championship** (1<sup>st</sup> or 2<sup>nd</sup> in classes 103-104 to compete) Perpetual Hodge Family Trophy.

The Champion qualifies for the Overall Supreme Championship.

## **MOUNTAIN & MOORLAND WORKING HUNTER PONY**

**ENTRY FEE: £10.00**

Prizes 1<sup>st</sup> - £15, 2<sup>nd</sup> - £8, 3<sup>rd</sup> - £5

105. Mountain & Moorland Novice Mixed Height WHP, open to registered & non-registered ponies 4 years old & over. Riders any age. Riders may ride more than 1 pony providing the animals are of a different height section. Ponies must jump in their correct height section.

106. Mountain & Moorland Open Mixed Height WHP, open to registered & non-registered ponies 4 years old & over. Riders any age. Riders may ride more than 1 pony providing the animals are of a different height section. Ponies must jump in their correct height section.

**Mountain & Moorland Working Hunter Pony Championship** (1<sup>st</sup> & 2<sup>nd</sup> in classes 105-106 to compete).

The Champion qualifies for the Overall Supreme Championship.

**SUPREME HORSE & PONY CHAMPIONSHIP, ALL SECTION CHAMPIONS TO COMPETE.**

**THE W.R.PUGH PERPETUAL TROPHY**

**Supreme Champion will receive a prize of £75 Reserve**

**Champion will receive a prize of £25**

## **RING 4**

### **\*Cothi Bridge Show 2024\* British Showjumping\***

**Starts at 9.00am prompt.** Entries are via the Showing Scene website

Please keep a screen shot or copy of your online entry to enable you to gain access to the show ground.

Rule 76.6 applies to all our showjumping classes. Entries close 23 May, 2024

SJ 1 - 85cm National Amateur Qualifier 1<sup>st</sup> round / 85cm Open.

Entry fee £14.00. Prize money 1<sup>st</sup> £25 2<sup>nd</sup> £20 3<sup>rd</sup> £16 4<sup>th</sup> £14 5<sup>th</sup> £14

SJ 2 - Equissage Pulse Senior British Novice 1<sup>st</sup> round/ 90cm open. Entry

fee £14.00. Prize money 1<sup>st</sup> £25 2<sup>nd</sup> £20 3<sup>rd</sup> £16 4<sup>th</sup> £14 5<sup>th</sup> £14

SJ 3 - 95cm National Amateur Qualifier 1<sup>st</sup> round / 90cm Open.

Entry fee £16.00. Prize money 1<sup>st</sup> £30 2<sup>nd</sup> £25 3<sup>rd</sup> £20 4<sup>th</sup> £16 5<sup>th</sup> £16

SJ 4 - Nupafeed Supplements Senior Discovery 1<sup>st</sup> round / 1.00m open.

Entry fee £16.00. Prize money 1<sup>st</sup> £30 2<sup>nd</sup> £25 3<sup>rd</sup> £20 4<sup>th</sup> £16 5<sup>th</sup> £16

SJ 5 - 1.05 National Amateur Qualifier 1<sup>st</sup> round / 1.05 open.

Entry fee £18.00. Prize money 1<sup>st</sup> £35 2<sup>nd</sup> £30 3<sup>rd</sup> £25 4<sup>th</sup> £18 5<sup>th</sup> £18

SJ 6 - Senior newcomers 1<sup>st</sup> round / 1.10m open.

Entry fee £20.00. Prize money 1<sup>st</sup> £40 2<sup>nd</sup> £35, 3<sup>rd</sup> £25 4<sup>th</sup> £20 5<sup>th</sup> £20

SJ 7 - National 1.15m Members Cup Qualifier first round / 1.15m open.

Entry Fee £22.00 Prize money 1<sup>st</sup> £50 2<sup>nd</sup> 40 3<sup>rd</sup> £30 4<sup>th</sup> 22 5<sup>th</sup> 22

For more information about the showjumping classes please check on the British showjumping website.  
Any other show jumping queries please contact June Williams 07533827275.

## **Cothi Bridge Arena Eventing / Open to both Junior and Senior Riders**

The course to consist of approx. 6 -8 show jumps, followed by 8-10 simulated knock down cross country fences.

- There will no more than 20 Jumping efforts.
- The whole round will be timed.
- Penalties will be given as per the table below.
- The winner will be the competitor with the lowest number of penalties.
- In the event of a tie the winner will be the one closest to the optimum time.
- The optimum time is calculated based on a speed of 325mpm.
- Stop watches are not permitted and the display clock will be off.
- Cross country kit to be worn with a mandatory back protector IN LINE BETA 2018 and skull cap up to the latest safety standards. PAS 015 2011 WITH BSI KITE MARK, SNELL E2016. OR AN EQUIVALENT STANDARD IN LINE WITH THE BHS APPROVED CENTRES AND BHS ASSESSMENTS HATS RULES 2023.

It is the responsibility of the competitor/and/or their parents/guardian to ensure that they compete at a level which they are competent at. The show organisers, committee and anyone associated with the show accept no liability whatsoever for the horse or rider during this competition and whilst at the show ground.

- Your entry will only be accepted on this basis.

### **PENALTIES:**

|   |               |
|---|---------------|
| First disobedience  | 4 penalties   |
| Second disobedience   | 8 penalties   |
| Third disobedience  | Elimination   |
| Knockdown of obstacle   | 4 penalties   |
| Fall of horse   | Elimination   |
| Fall of rider   | Elimination   |
| Every commenced second in excess of<br>The optimum time.                | 0.4 penalties |
| Every commenced second in excess of<br>5 seconds under the optimum time | 0.4 penalties |
| Exceeding time allowed  | Elimination   |
| Error of course   | Elimination   |
| Retaking obstacle already jumped  | Elimination   |
| Time allowed is twice the optimum time.                                 |               |

**THE JUDGES DECISION IS FINAL.**

Class 1. - 70cm. Junior/Senior.

Class 2. - 80cm. Junior/Senior

Class 3. - 90cm. Junior/Senior

Entry fee £15.00

Prize money: 1<sup>st</sup> £15, 2<sup>nd</sup> £12 3<sup>rd</sup> £10 - Rosettes 1<sup>st</sup> to 5<sup>th</sup> in each section. Prize money will be paid out on the basis of 1 prize – 5 entries of the overall placings in each class.

## **ADRAN GWARTHEG/ CATTLE SECTION**

### **Note to all Cattle exhibitors.**

Cattle exhibited at Cothi Bridge show must come from a herd which is not currently under restriction for TB, & which has been TB tested & declared Officially TB Free within 12 months of show day. Animals do not need to be Pre-Movement tested to be exhibited.

Only the vehicle driver will be allowed into the showfield free of charge, all other passengers MUST pay the normal entrance fee. No refunds will be given.

ENTRIES TAKEN ON THE DAY NEAR THE CATTLE LINES  
NO ENTRIES ACCEPTED AFTER 10AM ON SHOW DAY  
NO ENTRIES WILL BE ACCEPTED WITHOUT FIRST AID FEES OF £2.00  
55/039/0094

### **GWARTHEG LIMOUSIN CATTLE**

(Pedigree animals only) **Entry**

**fee £5.00**

Prizes 1<sup>st</sup> £30.00, 2<sup>nd</sup> £20.00, 3<sup>rd</sup> £10.00

- 200 Best Bull – any age
- 201 Maiden Heifer – Born after 1<sup>st</sup> January 2023
- 202 In calf Heifer – Born after 1<sup>st</sup> January 2022
- 203 Best Cow – In calf or with calf at foot
- 204 Best Pair – Property of the same owner

Best Group of 4 – To be nominated by the Judge for the Inter-breed group of 4 Championship.

Limousin Cattle Championship

### **GWARTHEG SIMMENTAL CATTLE**

(Pedigree animals only) **Entry**

**fee £5.00**

Prizes 1<sup>st</sup> £30.00, 2<sup>nd</sup> £20.00, 3<sup>rd</sup> £10.00

- 205 Best Bull – any age
- 206 Maiden Heifer – Born after 1<sup>st</sup> January 2023
- 207 In calf Heifer – Born after 1<sup>st</sup> January 2022
- 208 Best Cow – In calf or with calf at foot
- 209 Best Pair – Property of the same owner

Best Group of 4 – To be nominated by the Judge for the Inter-breed group of 4 Championship.

Simmental Cattle Championship, Perpetual Mr & Mrs B Raymond Trophy. Prize money kindly sponsored by Mr & Mrs B Raymond

**UNRHYW FRID BIFF FRODOROL/ ANY NATIVE BEEF BREED**

(Pedigree animals only) **Entry**

**fee £5.00**

Prizes 1<sup>st</sup> £30.00, 2<sup>nd</sup> £20.00, 3<sup>rd</sup> £10.00

- 210 Best Bull – any age
- 211 Maiden Heifer – Born after 1<sup>st</sup> January 2023
- 212 In calf Heifer – Born after 1<sup>st</sup> January 2022
- 213 Best Cow – In calf or with calf at foot
- 214 Best Pair – Property of the same owner

Best Group of 4 – To be nominated by the Judge for the Inter-breed group of 4 Championship.

Any Native Beef Championship

**UNRHYW WARTHEG CYFANDIROL BÎFF ARALL ANY OTHER CONTINENTAL BEEF  
BREED**

(Pedigree animals only) **Entry**

**fee £5.00**

Prizes 1<sup>st</sup> £30.00, 2<sup>nd</sup> £20.00, 3<sup>rd</sup> £10.00

- 215 Best Bull – any age
- 216 Maiden Heifer – Born after 1<sup>st</sup> January 2023
- 217 In calf Heifer – Born after 1<sup>st</sup> January 2022
- 218 Best Cow – In calf or with calf at foot
- 219 Best Pair – Property of the same owner

Best Group of 4 – To be nominated by the Judge for the Inter-breed group of 4 Championship.

Any Other Continental Beef Championship, Perpetual J Bibby Agriculture Tankard

### **BEEF CATTLE CHAMPIONSHIPS**

Beef Cattle best exhibit, Perpetual Ystrad Trophy

Best Animal bred by an exhibitor in the Beef section. Each breed judge to nominate one animal.  
Perpetual Trophy

Best Pair of Beef Cattle, (property of the same owner), Perpetual Wyn Davies Trophy

Best Group of Four Beef, as nominated by the judge in the breed classes.

The Champion Group winner £60, Reserve £40

Prize money kindly donated by Mr & Mrs Dylan Raymond (Boiler & Cooker Service & Repairs)

### **GWARTHEG HOLSTEIN UK CATTLE**

**Entry fee £5.00**

Prizes 1<sup>st</sup> £30.00, 2<sup>nd</sup> £20.00, 3<sup>rd</sup> £10.00

220 Best Dairy Calf (Under 12 months)

221 Best Maiden Heifer (12-24 months)

222 Best In-calf Heifer

223 Best Heifer in Milk

224 Best Cow in Milk

225 Best Cow in Calf (At least 5 months in calf)

226 Best Pair of Females (Property of same owner)

Holstein Cattle Championship

Winner of each Class is eligible to compete in the Championship.

### **UNRHYW WARTHEG LLAETH ARALL ANY OTHER DAIRY BREED**

**Entry fee £5.00**

Prizes 1<sup>st</sup> £30.00, 2<sup>nd</sup> £20.00, 3<sup>rd</sup> £10.00

227 Best Dairy Calf (Under 12 months)

228 Best Maiden Heifer (12-24 months)

229 Best In-calf Heifer

230 Best Heifer in Milk

231 Best Cow in Milk

232 Best Cow in Calf (At least 5 months in calf)

233 Best Pair of Females (Property of same owner)

Any Other Dairy Cattle Championship

Winner of each Class is eligible to compete in the Championship.

### **INTER BREED DAIRY CATTLE CHAMPIONSHIPS**

Best Heifer in Dairy Section (The Two highest placed heifers from their respective championship class are eligible to compete)

Dairy Champion (Breed Champions & Reserve Champions are eligible to compete)

Best Animals bred by an Exhibitor (Presented to the highest placed, home bred animal in the Interbreed championship lineup)

Best Udder in show, Any Breed (Animals nominated by the judge in their respective classes are eligible to compete)

Best Pair of Dairy Cattle (Winners & second place pairs from breed section eligible to compete. (1<sup>st</sup> Prize £30, 2<sup>nd</sup> £15 kindly donated by Jones Family, Beili Glas)

### **YOUNG HANDLER**

**ALL DAIRY ANIMALS MUST BE UNDER 15 MONTHS OLD. ALL BEEF ANIMALS  
MUST BE UNDER 12 MONTHS OLD**

Prizes 1<sup>st</sup> £15.00, 2<sup>nd</sup> £8.00, 3<sup>rd</sup> £5.00 **ENTRY FREE**

**234 Dairy Calf Handling**, for leaders under 21

**235 Dairy Calf Handling**, for leaders of primary School age

**236 Beef Calf Handling**, for leaders under 21

**237 Beef Calf Handling**, for leaders of primary School age

Age as of 1<sup>st</sup> January in the current year

**Cup to be won outright for the Best Dairy Handler, kindly donated by Mr  
Ifor Davies, Llechwenni.**

**Cup to be won outright for the Best Beef Handler.**



## **ADRAN Y DEFAID/ SHEEP SECTION**

Only the vehicle driver will be allowed into the showfield free of charge, all other passengers MUST pay the normal entrance fee. No refunds will be given.

ENTRIES TAKEN ON THE DAY NEAR THE SHEEP PENS

NO ENTRIES ACCEPTED AFTER 10AM ON SHOW DAY

NO ENTRIES WILL BE ACCEPTED WITHOUT FIRST AID FEES OF £2.00

55/039/0094

A separate area will be provided for entries from Maedi Visna Accredited Flocks. Please state on the Entry form whether Accredited or otherwise. Please provide a valid copy of the MV Certificate with the Entry form.

All Exhibitors wishing to gain entry into the approved section must produce an official certificate of MV Status (SH20) for inspection by the show stewards.

If there will be 10 or more entries of a breed in the Any Other Continental (colour), Any Other Continental, any Other Hill, any Other Lowland the show society will arrange classes for that breed on show day. If possible, please enter ahead of show day to help the section stewards. Diolch

### **DEFAID TEXEL SHEEP**

**Entry Fee: £2.00**

Prizes: 1<sup>st</sup> £10.00, 2<sup>nd</sup> £6.00, 3<sup>rd</sup> £4.00

A valid copy of the MV Certificate must accompany the entry form.

300 Best Ram – Any Age

301 Ram Lamb

302 Ewe Lamb

303 Ewe – Any Age

304 Group of Three – 2 females & 1 male

Texel Sheep Championship

### **DEFAID TEXEL GLAS/ BLUE TEXEL SHEEP**

**Entry Fee: £2.00**

Prizes: 1<sup>st</sup> £10.00, 2<sup>nd</sup> £6.00, 3<sup>rd</sup> £4.00

A valid copy of the MV Certificate must accompany the entry form.

305 Best Ram – Any Age

306 Ram Lamb

307 Ewe Lamb

308 Ewe – Any Age

309 Group of Three – 2 females & 1 male

Blue Texel Championship

**DEFAID LLIW CYFANDIROL/ COLOURED CONTINENTAL SHEEP**

**Entry Fee: £2.00**

Prizes: 1<sup>st</sup> £10.00, 2<sup>nd</sup> £6.00, 3<sup>rd</sup> £4.00

A valid copy of the MV Certificate must accompany the entry form.

310 Best Ram – Any Age

311 Ram Lamb

312 Ewe Lamb

313 Ewe – Any Age

314 Group of Three – 2 females & 1 male

Coloured Continental Championship

**DEFAID CYFANDIROL GWYN/ WHITE CONTINENTAL SHEEP**

**Entry Fee: £2.00**

Prizes: 1<sup>st</sup> £10.00, 2<sup>nd</sup> £6.00, 3<sup>rd</sup> £4.00

A valid copy of the MV Certificate must accompany the entry form.

315 Best Ram – Any Age

316 Ram Lamb

317 Ewe Lamb

318 Ewe – Any Age

319 Group of Three – 2 females & 1 male

White Continental Sheep Championship

**DEFAID SUFFOLK SHEEP**

**Entry Fee: £2.00**

Prizes: 1<sup>st</sup> £10.00, 2<sup>nd</sup> £6.00, 3<sup>rd</sup> £4.00

A valid copy of the MV Certificate must accompany the entry form.

320 Best Ram – Any Age

321 Ram Lamb

322 Ewe Lamb

323 Ewe – Any Age

324 Group of Three – 2 females & 1 male

Suffolk sheep Championship

**DEFAID POLL DORSET HORN SHEEP**

**Entry Fee: £2.00**

Prizes: 1<sup>st</sup> £10.00, 2<sup>nd</sup> £6.00, 3<sup>rd</sup> £4.00

A valid copy of the MV Certificate must accompany the entry form.

325 Best Ram – Any Age

326 Ram Lamb

327 Ewe Lamb

328 Yearling Ewe

329 Aged Ewe

330 Group of Three – 2 females & 1 male

Poll Dorset Horn Championship

**DEFAID KERRY HILL SHEEP**

**Entry Fee: £2.00**

Prizes: 1<sup>st</sup> £10.00, 2<sup>nd</sup> £6.00, 3<sup>rd</sup> £4.00

A valid copy of the MV Certificate must accompany the entry form.

331 Best Ram – Any Age

332 Ram Lamb

333 Ewe Lamb

334 Ewe – Any Age

335 Group of Three – 2 females & 1 male

Kerry Hill Sheep Championship

**DEFAID DUTCH SPOTTED SHEEP**

**Entry Fee: £2.00**

Prizes: 1<sup>st</sup> £10.00, 2<sup>nd</sup> £6.00, 3<sup>rd</sup> £4.00

A valid copy of the MV Certificate must accompany the entry form.

336 Best Ram – Any Age

337 Ram Lamb

338 Ewe Lamb

339 Yearling Ewe

340 Aged Ewe

341 Group of Three – 2 females & 1 male

Dutch Spotted sheep Championship

**UNRHYW FRID O DDEFAID ISELDIR/ ANY OTHER LOWLAND SHEEP** Entry

**Fee: £2.00**

Prizes: 1<sup>st</sup> £10.00, 2<sup>nd</sup> £6.00, 3<sup>rd</sup> £4.00

A valid copy of the MV Certificate must accompany the entry form.

342 Best Ram – Any Age

343 Ram Lamb

344 Ewe Lamb

345 Ewe – Any Age

346 Group of Three – 2 females & 1 male

Any Other Lowland Sheep Championship

**UNRHYW FRID ARALL O DDEFAID UCHELDIR/ ANY OTHER HILL SHEEP**

**Entry Fee: £2.00**

Prizes: 1<sup>st</sup> £10.00, 2<sup>nd</sup> £6.00, 3<sup>rd</sup> £4.00

A valid copy of the MV Certificate must accompany the entry form.

347 Best Ram – Any Age

348 Ram Lamb

349 Ewe Lamb

350 Ewe – Any Age

351 Group of Three – 2 females & 1 male

Any Other Hill Sheep Championship

**DEFAID DU MYNYDD CYMREIG/ BLACK WELSH MOUNTAIN**

**Entry Fee: £2.00**

Prizes: 1<sup>st</sup> £10.00, 2<sup>nd</sup> £6.00, 3<sup>rd</sup> £4.00

A valid copy of the MV Certificate must accompany the entry form.

352 Best Ram – Any Age

353 Ram Lamb

354 Ewe Lamb

355 Ewe – Any Age

356 Group of Three – 2 females & 1 male

Black Welsh Mountain Sheep Championship

**DEFAID TORDDU/ TORWEN/ BADGERFACE WELSH MOUNTAIN**

**Entry Fee: £2.00**

Prizes: 1<sup>st</sup> £10.00, 2<sup>nd</sup> £6.00, 3<sup>rd</sup> £4.00

A valid copy of the MV Certificate must accompany the entry form.

357 Best Ram – Any Age

358 Ram Lamb

359 Ewe Lamb

360 Ewe – Any Age

361 Group of Three – 2 females & 1 male

Badgerface Welsh Mountain Sheep Championship

**DEFAID SHETLAND SHEEP**

**Entry Fee: £2.00**

Prizes: 1<sup>st</sup> £10.00, 2<sup>nd</sup> £6.00, 3<sup>rd</sup> £4.00

A valid copy of the MV Certificate must accompany the entry form.

362 Best Ram – Any Age

363 Ram Lamb

364 Ewe Lamb

365 Ewe – Any Age

366 Group of Three – 2 females & 1 male

Shetland Sheep Championship

**DEFAID PRIN A LLEIAFRIF/ RARE, LONGWOOL & PRIMITIVE**

**Entry Fee: £2.00**

Prizes: 1<sup>st</sup> £10.00, 2<sup>nd</sup> £6.00, 3<sup>rd</sup> £4.00

A valid copy of the MV Certificate must accompany the entry form.

367 Best Ram – Any Age

368 Ram Lamb

369 Ewe Lamb

370 Ewe – Any Age

371 Group of Three – 2 females & 1 male

Rare, Longwool & Primitive Sheep Championship

### **SPECIAL CLASS - WOOL ON THE HOOF**

#### **SHEEP CHAMPIONSHIPS**

Supreme Sheep Championship, Perpetual Goedlan Trophy

Best Group of Three (2 females & 1 male)

Prizes 1<sup>st</sup> £25.00, 2<sup>nd</sup> £15.00

#### **SHEEP YOUNG HANDLER COMPETITION**

372 To be led by a child under 11 years old on the 1<sup>st</sup> January in the current year.

373 To be led by a child under 15 years old on the 1<sup>st</sup> January in the current year.

**Rosettes** will be awarded to all exhibitors in classes 372 & 373

## **COMPANION DOG SHOW Judging to commence at 12 noon.**

Entries taken from 11am at the Dog show Marquee.

There will be no entry fee charged for any exhibits.

Each exhibitor will be charged the relevant entrance fee to the showground at the main gate irrespective of the number of exhibits.

\*A dog docked on or after 28/03/2007 may not be entered at this show\*

### **PEDIGREE CLASSES**

**Prizes: 1st – £3.00; 2nd – £2.00; 3rd – £1.00.**

- 1. Any Variety Puppy.** Six to twelve months.
- 2. Any Variety Sporting.**
- 3. Any Variety Non-Sporting.**
- 4. Any Variety Open.**

All entries in Classes 1-4 must be registered or eligible for registration with the Kennel Club.

The Champion and the Reserve Champion in the pedigree classes will not be permitted to compete in the Novelty Classes. 1st from classes 1-4 to compete.

### **NOVELTY CLASSES**

**Prizes: 1st – £3.00; 2nd – £2.00; 3rd – £1.00.**

- 5. Best Conditioned Puppy.** Under nine months.
- 6. Best Conditioned Long Coated.**
- 7. Best Conditioned Short Coated.**
- 8. Any Variety Working Dog/Bitch.**

**(Perpetual Trophy, kindly donated by Mr Kevin Sivyer)**

- 9. Dog with the waggiest tail**
- 10. Any Variety under 12".**
- 11. Any Variety over 12".**
- 12. Any Variety Handled by a Child.**
- 13. Best veteran over 7 years old in Novelty Classes**
- 14. Any variety not having won a prize today.**

**CYMDEITHAS AMAETHYDDOL PONTARGOTHI COTHI BRIDGE  
AGRICULTURAL SOCIETY**

**[www.cothibridgeshow.cymru](http://www.cothibridgeshow.cymru)**

**Coginio, Crefft a Garddwriaeth**

**Cookery, Craft and Horticulture**

**SCHEDULE**

**Ar/on**

**SADWRN / SATURDAY, 25th Mai/May 2024**

**Croeso cynnes i bawb  
A warm welcome to all**

**RULES AND REGULATIONS  
COVERING THE COMPETITIONS IN THIS SCHEDULE**

1. Entries accepted between **8.30am and 10.45am** in the Craft Pavilion.
2. Please seek the assistance of a Steward to enter your exhibit and before displaying your exhibits, as space may be limited in your category.
3. No responsibility will be accepted by the society for loss or damage of exhibits, or any part thereof, during the show. The society will not be responsible for the loss of any item in transit to, or from, or in the Showground.
4. Exhibits must remain on display until **4pm**. No exhibit to be removed before **4pm**.
5. Exhibits to be collected from **4pm**. Any exhibit left in the Craft Pavilion after the time of collection will be the responsibility of the exhibitor.
6. The Craft Pavilion will be closed for judging between 11am and 1pm. No person shall be allowed into the Craft Pavilion during judging time.
7. All exhibits in the cookery section must be covered and displayed on plates or a suitable dish.
8. All prize money will be paid out on Show Day between **2pm-5pm** in the Craft Pavilion by the Ladies' Committee
9. Presentation of the Cups will be at **1.30pm** in the Craft Pavilion.
10. In the event of a tie the winner will be the exhibitor with the most first prizes.
11. All craftwork classes are "open" - no club or society membership required.

**ENTRY FEE - 50P (cash only, please)**

**JUNIOR ENTRIES - FREE**

**PRIZE MONEY**

|                         |            |
|-------------------------|------------|
| 1 <sup>st</sup> - £4.00 | (3 points) |
| 2 <sup>nd</sup> - £3.00 | (2 points) |
| 3 <sup>rd</sup> - £2.00 | (1 point ) |

**JUNIOR PRIZE MONEY**

|       |
|-------|
| £2.00 |
| £1.00 |
| £0.50 |

Am rhagor o wybodaeth cysylltwch â / For further information, contact  
Ladies Committee Secretary:- Jenny Gammon (H) 01267 233599 (M) 07794 587004  
Email: jsglib@hotmail.com

**ENJOY THE SHOW THANK YOU FOR YOUR SUPPORT**



## **GWAITH LLAW/ HANDICRAFT 2024**

Beirniad/ Judge: Enfys Taylor

1. A cross-stitch item
2. A machine or hand embroidered item
3. A knitted garment
4. Hand made jewellery (any medium)
5. Any item using wine bottle corks
6. A child's toy (any medium)
7. A crochet item
8. A sewn item
9. An item using handmade pompoms
10. The prettiest belt (bought, not handmade)
11. Any other handmade item not listed above

See also Decorated Eggs, classes 7 & 8 in "Eggs " A

**Blue Ribbon** will be awarded to the best exhibit.

A **Perpetual Trophy** donated by Mrs Margaret Hinds will be awarded to the exhibitor with the most points.

### **ADVANCE NOTICE FOR 2025**

1. A tapestry item
2. A cover for a wine bottle (any medium)
3. Knitted item or items
4. A craft item for a child's bedroom (any medium)
5. A patchwork item
6. A painting (any subject, any medium)
7. A cushion (any medium)
8. A sewn item
9. Any item in blue
10. The prettiest bought handbag
11. Any recycled item
- 12 Any other handmade item not listed above

## ADRAN GOGINIO / COOKERY

### 1. Judge's Recipe – Beirniad / Judge: Maryann Wright

The “Halfway” Perpetual Trophy and a cash prize of £20, donated by Towy Valley Caravan Park, will be awarded to the winner of the judge's recipe.

#### **BAKED SULTANA & NUTMEG CHEESECAKE**

BASE:                      25g butter    1 tbsp caster sugar  
                                 25g fresh white breadcrumbs

CHEESECAKE: 700g full fat cream cheese                      225g caster sugar  
                                 2 eggs    350ml double cream  
                                 40g cornflour    1 teaspoon vanilla paste  
                                 75g sultanas (or seeds from 1 vanilla pod)  
                                 Grating of nutmeg

BASE: Grease a 20cm loose-bottomed cake tin and line with baking parchment paper. Melt the butter and grease the paper. Mix the breadcrumbs and sugar and sprinkle over the base.

CHEESECAKE: Mix the cream cheese, sugar, eggs and cream. Fold in the cornflour and vanilla and, finally, the sultanas. Carefully spoon over the base and sprinkle with nutmeg. Bake in a preheated oven at 180°C for 40-45 minutes until just set. Cool in the tin before turning out.

2. A pineapple upside-down cake
3. A Victoria sponge – jam filling
4. 4 sultana scones
5. A quiche – any filling
6. A savoury stuffing
7. A boiled fruit cake
8. A round of shortbread
9. 4 Welsh cakes
10. A pudding
11. Continental – style bread e.g. focaccia, olive bread etc.
12. A loaf of bread (machine or hand)

A Blue Ribbon will be awarded to the best exhibit in the Cookery Section.

The **Perpetual Spirit Kettle** donated by Mrs Margaret Howell will be awarded to the exhibitor with the most points.

## **SPECIAL COOKERY COMPETITION**

### **A Banana Cake (not a loaf)**

**£25 prize given by Mr Ivor Davies, Llechwenni (President 2009)**

## **SHOW DAY COOKERY DEMONSTRATION**

**By Jac Davies**

**in the SHOW PAVILION AT 2PM**

### **WYAU / EGGS**

Sponsored by Jenny Gammon, Llety Henri, Abergwili

Beirniad / Judge:- Aaron Hughes

1. 4 white hens' eggs
2. 4 cream hens' eggs
3. 4 brown hens' eggs
4. 4 coloured hens eggs
5. 4 different coloured eggs
6. 4 eggs, other than hens' eggs
7. Decorative display of 4 eggs (may be hard-boiled)
8. A painted egg (hard boiled)

**A Perpetual Trophy**, donated by Lloyd and Sylvia Thomas, will be awarded to the exhibitor with the most points.

## **CYFFAITH A CHYNNYRCH PRESERVES AND PRODUCE**

Beirniad/ Judge: Emma Williams

### **NO TRADE MARKS ALL JARS and BOTTLES ARE TO BE DATED**

1. Jar of Jam
2. Jar of Chutney
3. Jar of Marmalade
4. Jar of Clear Honey
5. Jar of Set/Granulated Honey
6. Jar of Fruit Jelly
7. Jar of Mint Jelly
8. Jar of Fruit Curd
9. Jar of Pickled Onions, Beetroot or other vegetable
10. A bottle of homemade fruit liqueur e.g. Sloe Gin, Cherry Brandy, Blackberry Whisky
11. A bottle of homemade Squash or Cordial

A **Blue Ribbon** will be awarded to the best exhibit in the Preserves and Produce Section.  
The **Winnie James Abercothi Perpetual Cup** will be awarded to the exhibitor with the most points.

## **ADRAN GOSOD BLODAU / FLORAL ART SECTION**

Beirniad / Judge: Margaret Buen

1. A pot plant in bloom
2. A foliage plant grown in a pot
3. A tear-drop swag to hang on a door - fresh and/or dried
4. A lady's buttonhole
5. A petite arrangement
6. An arrangement incorporating a hoop or hoops
7. An arrangement in a tall vase
8. A Continental-style arrangement
9. An arrangement using fruit and foliage
10. A selection of flowers in a vase – no "oasis"

A **Blue Ribbon** will be awarded to the best exhibit in the Floral Art Section.

The **Dyfed Wildlife Trust Silver Tray Perpetual Trophy** and a **cash prize of £10**, donated by **Towy Valley Caravan Park** will be awarded to the exhibitor with the highest number of points in the Floral Art section.

## **FFOTOGRAFFIAETH / PHOTOGRAPHY**

Beirniad / Judge: William Theophilus

**NO EXHIBIT TO HAVE A FRAME OR BORDER OR TO EXCEED 7 x 5 INCHES.**

### **OPEN CLASS**

1. A coastal view
2. A building of interest
3. Weather
4. A sporting event
5. The colour red

A **Perpetual Trophy**, donated by the late Dr Anthony Davies, will be awarded for the best exhibit in the Open Photography Section.

### **UNDER 18 YEARS OF AGE**

1. My pet
2. Having fun

The **perpetual Nanson Cup**, donated by Llanegwad W.I. will be awarded to the best exhibit in the under 18 photography section

## **CREFFTAU AMAETHYDDOL A GWLEDIG / AGRICULTURAL AND RURAL CRAFT**

Beirniad / Judge: Huw Jones

1. A lathed or turned item
2. An old farm hand tool (please label)
3. A sheep's fleece (white)
4. A sheep's fleece (coloured)
5. Any handmade, forged or welded metal item
6. A handmade bird box
7. An old enamel item
8. A handmade halter or other rope/twine item
9. Old butter making items
10. A sample of big bale silage
11. A sample of hay
12. Longest dock leaf

A **Perpetual Trophy** will be awarded to the best exhibit in this section.

**ADRAN Y PLANT / CHILDREN'S SECTION \***

**Kindly Sponsored by Llanegwad Community Council.**

Beirniad/Judge: Teleri Bowen

\*See also Decorated Eggs, classes 7 & 8 in the Eggs Section and the Under 18 classes in the Photography Section

**HANDICRAFT and COOKERY**

- Year 2 and under**
1. A painted pebble or stone
  2. A model of a flower (any medium)
  3. 4 rice krispies or cornflakes cakes
- Year 3 – Year 6**
1. Create a model from LEGO© or similar plastic bricks (**NOT A KIT**)
  2. Make an animal (any medium, e.g. from vegetables, cardboard, felt, knitted etc.
  3. Two open sandwiches. (please label)
- Secondary School**
1. An item using recycled material
  2. Any handcrafted item in **Red** (any medium, e.g. wood, metal, fabric, wool, cardboard etc.)
  3. A fruit crumble (please label)

The **Abercothi Perpetual Trophy** and a **cash prize of £10**, donated by the **Towy Valley Caravan Park** will be awarded to the “Year 6 and under” exhibitor with the most points in this “HANDICRAFT and COOKERY” section.

A **Perpetual Trophy** and a **cash prize of £10**, donated by the **Towy Valley Caravan Park** will be awarded to the “Secondary School” exhibitor with the most points in this “HANDICRAFT and COOKERY” section.

**ADRAN CELF Y PLANT / CHILDREN'S ART SECTION**

**Kindly Sponsored by Llanegwad Community Council.**

Beirniad/Judge: Carol Garner

**ALL ENTRIES IN THIS SECTION MUST BE 2D & ON A4 PAPER**

|                          |                            |
|--------------------------|----------------------------|
| <b>Meithrin ac o dan</b> | Patrwm sbwng neu taten     |
| <b>Nursery and under</b> | A sponge or potato pattern |
| <b>Derbyn</b>            | Blodyn                     |
| <b>Reception</b>         | A flower                   |

**A Perpetual Cup** will be awarded to the best exhibit in these two classes

|                        |             |
|------------------------|-------------|
| <b>Blwddyn 1 a 2</b>   | Tegan       |
| <b>Years 1 &amp; 2</b> | A toy       |
| <b>Blwyddyn 3 a 4</b>  | Dydd Heulog |
| <b>Years 3 &amp; 4</b> | A sunny day |
| <b>Blwyddyn 5 a 6</b>  | Ein cartref |
| <b>Years 5 &amp; 6</b> | Our home    |

**A Perpetual Trophy**, donated by the Reverend Philip & Mrs Gill Johnes, Will be awarded for the best exhibit in years 1 - 6.

**PLANT AG ANGHENION ARBENNIG / PUPILS WITH SPECIAL NEEDS**

|                          |                                |
|--------------------------|--------------------------------|
| <b>Lan i 6 oed:</b>      | Peintio patrwm â bys           |
| <b>Up to 6 years old</b> | Paint a pattern using a finger |
| <b>6-11 oed</b>          | Peintio patrwm â bys           |
| <b>6-11 years old</b>    | Paint a pattern using a finger |

**A Perpetual Cup** will be awarded to the best "up to 6 years" age group exhibit in this class.

**A Perpetual Cup**, donated by Mr Edwards, Penrhynogoch, Aberystwyth, will be awarded for the best "6-11 years old" exhibit in this class.

### CYSTADLEUAETH C.F.F.I. /YFC COMPETITIONS

#### **OPEN TO PAST AND PRESENT MEMBERS OF THEVALE OF TOWY YFC:-**

|                    |   |
|--------------------|---|
| <b>Lluniau</b>     | "Dathlu"  |
| <b>Photography</b> | "Celebrating"   |
| <b>Coginio</b>     | Unrhyw cacen neu cacennau bach ar y thema "Dathlu"                    |
| <b>Cookery</b>     | Any cake or cupcakes on the theme "Celebrating"                       |
| <b>Creft</b>       | Carden penblwydd i'r clwb yn 85 mlwydd oed                            |
| <b>Craft</b>       | An 85 <sup>th</sup> birthday card for the club                        |
| <b>Ysgafn:</b>     | Ysgrifennu limrig, yn dechrau "Y peth cyntaf wrth drefnu parti" ..... |
| <b>Humour</b>      | Write a limerick, beginning "Essential when planning a party" .....   |

**A Trophy** kindly presented by the Vale of Towy YFC Past and Present Members will be awarded to the exhibitor with the most points.

#### **OPEN TO ALL YFC MEMBERS:-**

A dish celebrating agriculture

A **Perpetual Cup** kindly donated by Mr Dilwyn Williams will be awarded to the winner.



